

## Case 370 : Narrative

Case Vehicle (A): 2002 Pontiac	Vehicle (B): 1991 Chevrolet
Type: Grand Prix GT, 4-door sedan	Type: S-10 pickup truck
Driver: 23-year-old female	Driver: 17-year-old male
CDC: 12-FDEW-1	CDC: 03-RZEW-3

### SITUATION

[1](#) [2](#) [3](#) [4](#) In the mid-afternoon, case vehicle (A) was traveling south at a driver-estimated speed of 80 kph (50 mph) in the southbound lane of a four-lane asphalt roadway with a posted speed limit of 80 kph (50 mph), and was approaching a four-way intersection. [5](#) [6](#) [7](#) [8](#) Vehicle (B) was traveling west at an unknown speed in the westbound lane of the intersecting two-lane asphalt roadway with a posted speed limit of 72 kph (45 mph), and was also approaching the four-way intersection. The sky was clear and the two-lane asphalt roadway was dry and free of defects. Traffic control at the intersection consists of stop signs for eastbound and westbound traffic only. Vehicle (B) entered the intersection without stopping just before case vehicle (A). The driver of case vehicle (A) attempted to avoid a collision by braking but was unable to stop in time and the front of case vehicle (A) struck vehicle (B) on the right side. Both vehicles were towed from the scene due to damage.

The police accident report indicates C-level injuries for both drivers, who were the sole occupants of the vehicles. Both drivers were transported to a level-one trauma facility, where the female driver of case vehicle (A) was hospitalized overnight and released. No injury information was available for the male driver of vehicle (B).

## GENERAL VEHICLE DAMAGE AND ESTIMATED CRASH SEVERITIES

[9](#) Direct damage to case vehicle (A) extended across the full width of the vehicle front end. [10](#) The maximum frontal crush at bumper level was 13 cm and occurred at the right-front bumper corner.

[11](#) Direct damage to the right side of vehicle (B) began 31 cm forward of the right-rear axle and extended 127 cm forward to the rear section of the right-front door. [12](#) The maximum lateral crush at the frame level was 40 cm and occurred at the truck box between the wheelwell and the rear of the occupant compartment. [13](#) The right side of the truck box was crushed to the left, the passenger door was displaced slightly forward and jammed, and the lower B-pillar was damaged. [14](#) The right-front tire was deflated but the wheel rim was undamaged and the right wheelbase was unchanged.

Using the WinSMASH crash-reconstruction program and crush profiles measured for [10](#) case vehicle (A) and [12](#) vehicle (B), the following impact severities were calculated:

Vehicle	Variable	Calculated Velocity Change - kph (mph)		
		Total	Longitudinal	Latitudinal
Case Vehicle (A)	delta V	18 (11)	-18 (-11)	3 (2)
Vehicle (B)	delta V	22 (14)	-4 (-2)	-22 (-14)

Case vehicle (A) was equipped with an Event Data Recorder (EDR) that recorded a deployment event. The EDR data indicate that the airbag was not suppressed and that the driver seatbelt was buckled. Maximum recorded longitudinal velocity was -22 kph (-14 mph) at 15 ms into the event. There was no pre-crash data available from the EDR.

## DESCRIPTION OF DAMAGE TO CASE VEHICLE (A)

### Exterior

[15](#) Primary damage to case vehicle (A) was to the left front. [16](#) The left-front bumper-corner was torn and missing, [17](#) the bumper cover was attached at the right-front corner but separated from the bumper support, and the right-rear edge of the hood was slightly elevated but it did not contact the windshield. [18](#) The front of the hood was crushed down onto the radiator and the grille, the left headlight assembly was displaced but the glass was intact, and the right-front headlight assembly was broken. The hood remained on the vehicle with the hood latch damaged and jammed. [19](#) [20](#) There was no damage to the hood hinges, but [21](#) the right upper-support bracket was deformed above the engine compartment. [22](#) There was a spider-web crack on the right side of the windshield due to impact by the deploying dash-mounted airbag and module cover. [23](#) On the left side, the fender was slightly buckled above the wheel well. [24](#) [25](#) There was no damage to the left-side doors, to the left-side pillars, or to the left quarter-panel, and there was no damage to the left-side glazing. Both left-side tires were intact, the wheel rims were undamaged, and the wheelbase was increased by 2 cm.

[26](#) There was no damage to the rear of the vehicle. [27](#) On the right side, the fender was buckled and displaced rearward. [28](#) [29](#) The right-side pillars, both right-side doors, the right quarter panel, and all right-side glazing was intact. Both right-side tires were intact, the wheel rims were undamaged, and there was no significant change in the wheelbase.

### Interior

[30](#) [31](#) This vehicle was equipped with steering-wheel and dash-mounted frontal-impact airbags and both deployed during the frontal impact into the right side of vehicle (B). [32](#) In the driver seating area, there was no damage to the roof, to the A-pillar, or to the instrument panel. [33](#) There was also no damage to the steering-wheel airbag or module covers, to the steering column, or to the steering-wheel rim or spokes. [34](#) [35](#) [36](#) There

was no deformation of the driver knee bolster, but there were scuffmarks on both sides of the bolster cover. [37](#) There was no damage to the driver seat, to the driver toepan, or to the foot controls. There were no intrusions of vehicle interior components into the driver seating area.

[38](#) In the center-front area, there was no damage and there were no contact marks.

[39](#) In the right-front seating area, there was no damage to the roof, to the A-pillar, or to the instrument panel. [40](#) The dash-mounted airbag was undamaged but the module cover was damaged from contact with the windshield. [41](#) There was a spider-web crack in the right portion of the windshield from contact by the deploying dash-mounted airbag. [42](#) There was no damage to the passenger seat and there were no intrusions of vehicle components into the right-front seating area.

[43](#) [44](#) In the rear seating area, there was no damage and there were no intrusions.

## **OCCUPANT KINEMATICS**

[45](#) The 5-ft, 2-in, 160-lb, 23-year-old female driver was 28-weeks pregnant at the time of the crash, she was using the three-point belt, and [46](#) the steering-wheel airbag deployed during the frontal impact into the side of vehicle (B). [47](#) There were no loading marks on the belt webbing but [48](#) webbing load marks on the D-ring confirm belt use by the driver.

During the frontal impact, the driver moved forward relative to the interior of the vehicle. She sustained contusions to the left shoulder and across the abdomen, probably from loading by the shoulder belt and lap belt, respectively. A recently repaired hernia was ruptured, probably due to loading by the lap belt but possibly from loading by the deploying airbag. She experienced a single stress contraction at the trauma center that was attributed to the collision, but no additional contractions occurred and the fetus was not injured. The driver was observed over night and released the following day.

49 The following table and attached drawing summarize the injuries sustained by the driver of case vehicle (A).

Occupant: Driver	Age: 23 years	Gender: Female		
Restraints: Three-point belt; steering-wheel airbag	Stature: 157 cm (5 ft, 2 in)	Mass: 73 kg (160 lb)		
Injury Description	A.I.S.	Injury Source		
		Definite	Probable	Possible
—	—	—	—	—
Contusion, left shoulder	1	—	Shoulder belt	—
Contusions, abdominal	1	—	Lap belt	—
Re-ruptured hernia	1	—	Lap belt	Airbag
Maximum A.I.S. Level	1	—	—	—
Injury Severity Score	2	—	—	—

CASE NO.: 370-03

CASE VEHICLE: 2002 Pontiac

TYPE: Grand Prix GT, 4-door sedan

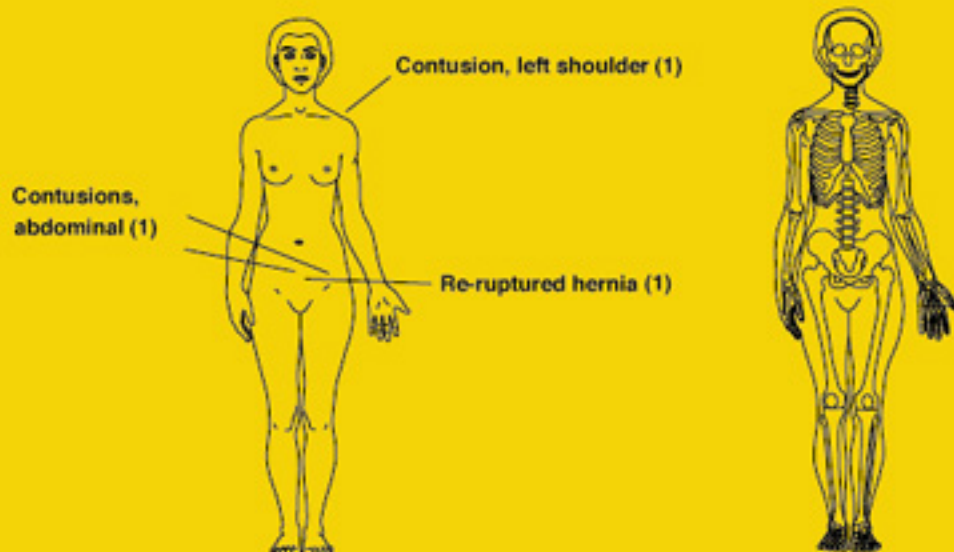
OCCUPANT: (Driver): 23-year-old female

STATURE: 157 cm (5 ft, 2 in) MASS: 73 kg (160 lb)

RESTRAINTS: 3-point belt; steering-wheel airbag deployed

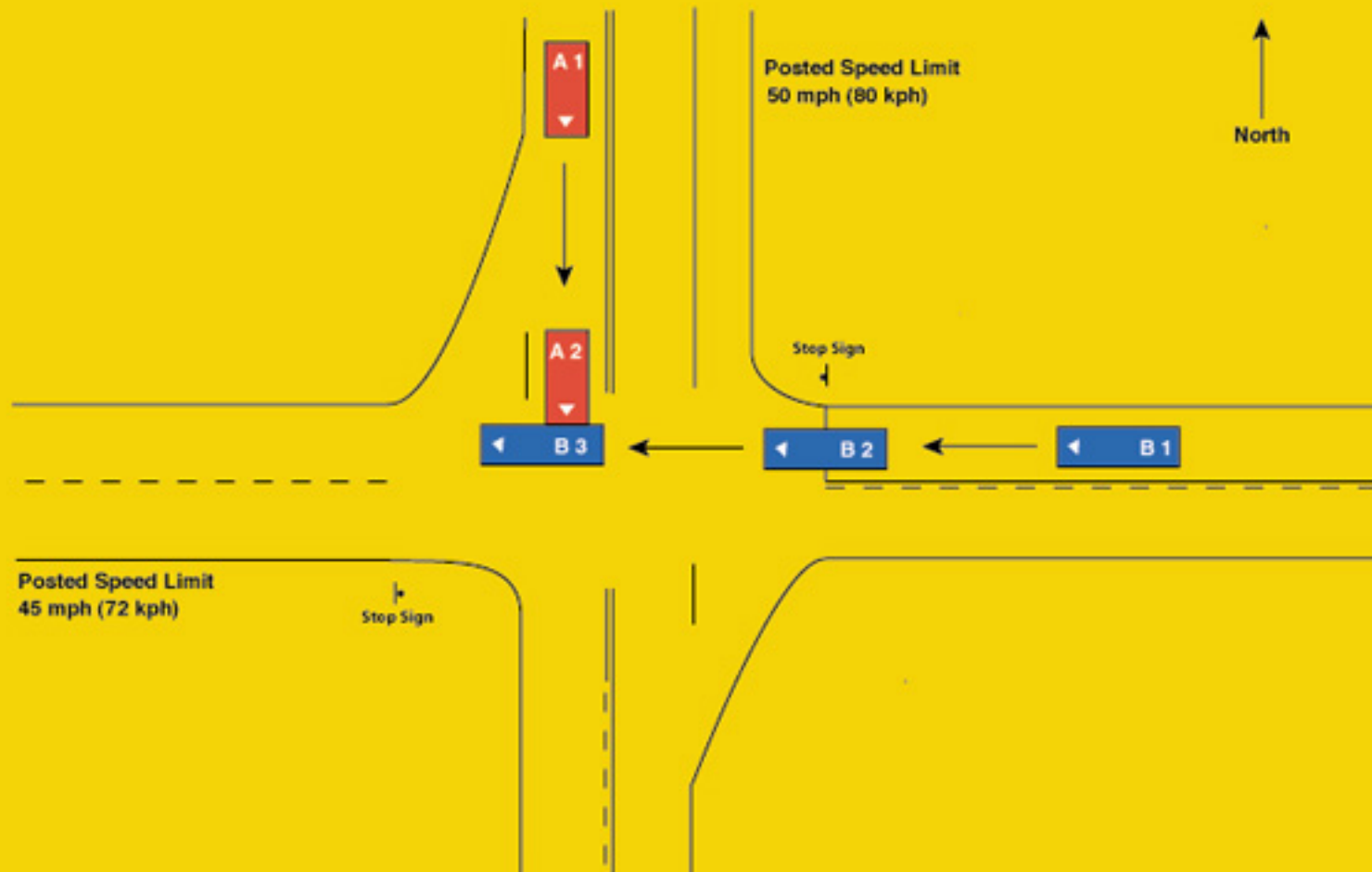
SEVERITY: MAIS - 1 ISS - 2

The driver was 28-weeks pregnant. She experienced one stress contraction at the trauma center but no additional contractions and the fetus was not injured.



Case No.: 370-03  
Case Vehicle: 2002 Pontiac  
Type: Grand Prix, 4-door sedan  
Driver: 23-year-old pregnant female  
Vehicle (B): 1991 Chevrolet S-10 pick-up truck

Light Conditions: Daylight  
Weather: Clear  
Road Surface: Dry  
Road Construction: Asphalt



# Vehicle Report

## General

### Conditions

Variable Number and Name	Code Value	Code Description	Other Options
V206 — Urban/Rural Area	2	Rural	<a href="#">more</a>
V207 — Limited Access Highway	0	No	<a href="#">more</a>
V208 — Road Total Lanes	2	2 lanes	<a href="#">more</a>
V209 — Intersecting Road Total Lanes	4	4 lanes or more	<a href="#">more</a>
V210 — Road Surface Type	1	Asphalt	<a href="#">more</a>
V211 — Road Defects	0	No	<a href="#">more</a>
V212 — Construction Zone	0	No	<a href="#">more</a>
V213 — Road Alignment Vertical Plane	1	Level	<a href="#">more</a>
V214 — Road Alignment Horizontal Plane	1	Straight	<a href="#">more</a>
V215 — Surface Covering	10	Dry	<a href="#">more</a>
V216 — Visibility Limitation	0	None	<a href="#">more</a>
V217 — Visibility Obstruction	0	None	<a href="#">more</a>
V218 — Speed Limit	5	80-85 km/h .. 50 mph	<a href="#">more</a>
V219 — Precipitation Type	0	None	<a href="#">more</a>
V220 — Precipitation Rate	8	Not applicable	<a href="#">more</a>
V221 — Temperature	9	Unknown	<a href="#">more</a>
V222 — Crosswind	9	Unknown	<a href="#">more</a>
V223 — Light Conditions	1	Daylight	<a href="#">more</a>
V224 — Mechanical Malfunction Mention	0	No	<a href="#">more</a>
V225 — Case Vehicle and Object	0	No	<a href="#">more</a>



V226 — Case Vehicle Rollover	0	No	<a href="#">more</a>
V227 — Case Vehicle Ran Off Roadway	0	No	<a href="#">more</a>
V228 — Moving Case Vehicle/Contacted Moving Vehicle	1	Yes	<a href="#">more</a>
V229 — Case Vehicle/Contacted Stopped Vehicle	0	No	<a href="#">more</a>
V230 — Stopped Case Vehicle/Contactd Vehicle	0	No	<a href="#">more</a>
V231 — Total Vehicles Hit By Case Vehicle	1	1 vehicle	<a href="#">more</a>
V232 — Any Fire in Crash	0	No	<a href="#">more</a>
V233 — Max Police Severity-PAR	1	C - Possible Injury	<a href="#">more</a>
V234 — Driver Alcohol Involvement	0	Had not been drinking	<a href="#">more</a>
V235 — Driver Alcohol BAC	80	Not tested	<a href="#">more</a>
V236 — Driver Impairment Mention	0	No	<a href="#">more</a>
V237 — Driven/Towed From Scene	2	Towed Due to Damage	<a href="#">more</a>

## Other Vehicle

Variable Number and Name	Code Value	Code Description	Other Options
V301 — Other Vehicle VIN	1GCCS1927M01	—	—
V302 — Other Vehicle Manufacturer/Body Code	11316	—	—
V303 — Other Vehicle Manufacturer	113	Chevrolet	<a href="#">more</a>
V304 — Other Vehicle Body Code	16	Pickup truck with canopy or shell cover	<a href="#">more</a>
V305 — Other Vehicle Make/Model	2920	S-10/T-10 Pickup	<a href="#">more</a>
V306 — Other Vehicle Model Year	1991	—	—
V307 — Other Vehicle Mass	001270 kg	—	—
V308 — Other Vehicle Number	0	No separate report	<a href="#">more</a>
V309 — Other Vehicle Number of Occupants	01	—	—
V310 — Other Vehicle Traveling Speed	999	Unknown	<a href="#">more</a>
V311 — Highest Police Injury Severity	1	C - Possible Injury	<a href="#">more</a>
V312 — Other Vehicle Type	16	Pickup truck with canopy/shell cover	<a href="#">more</a>
V313 — Other Vehicle Wheelbase (cm)	312 cm	—	—
V314 — Average Track Width	142 cm	—	—
V315 — Overall Length	490 cm	—	—
V316 — Overall Width (OAW)	165 cm	—	—
V317 — Front Overhang (FOH)	078 cm	—	—
V318 — Rear Overhang (ROH)	101 cm	—	—
V319 — Undeformed End Width (UEW)	148 cm	—	—
V320 — Engine Displacement	4.3 l	—	—

V321 — Engine: Number of Cylinders	06	—	—
V322 — Direct Damage Length (DDL)	999	Unknown	<a href="#">more</a>
V323 — Front-End Overlap % (FEO)	99	Missing or Not applicable	<a href="#">more</a>
V324 — Vehicle Overlap % (VOL)	99	Missing or Not applicable	<a href="#">more</a>

## Case Vehicle

### General

Variable Number and Name	Code Value	Code Description	Other Options
V401 — VIN	1G2WP52K02F2	—	—
V402 — Manufacturer/Body Code	11529	—	—
V403 — Vehicle Manufacturer	115	Pontiac	<a href="#">more</a>
V404 — Vehicle Body Code	29	—	—
V405 — Make/Model Code	0333	Grand Prix	<a href="#">more</a>
V406 — Model Year	2002	—	—
V407 — Vehicle Mass	001582 kg	—	—
V408 — Odometer Reading	061787 miles	—	—
V409 — Number of Occupants	01	—	—
V410 — Traveling Speed	080 kph	—	—
V411 — Body Type	14	4-door sedan	<a href="#">more</a>
V412 — Stolen Vehicle	8	Not currently collected	<a href="#">more</a>
V413 — Body Structure	2	Unitized	<a href="#">more</a>
V414 — Transmission Type	1	Automatic	<a href="#">more</a>
V415 — Transmission Lever Location	2	Console	<a href="#">more</a>
V416 — Steering	1	Power	<a href="#">more</a>
V417 — Brakes	1	Power	<a href="#">more</a>
V418 — Brake Type	3	Disc - all wheels	<a href="#">more</a>
V419 — Brake Anti-lock Device	2	Four-wheel	<a href="#">more</a>
V420 — Air Conditioning in Vehicle	8	Not currently collected	<a href="#">more</a>
V421 — Drive Type	2	Front wheel	<a href="#">more</a>
V422 — Dual Rear Wheels	0	No	<a href="#">more</a>
V423 — Original Restraint System Type	3	Airbag	<a href="#">more</a>

V424 — Equipped With Roll Bar	0	No	<a href="#">more</a>
V425 — Roof Type	4	Sun roof closed	<a href="#">more</a>
V426 — Wheelbase	281 cm	—	—
V427 — Anti-lacerative Glass	1	Windshield	<a href="#">more</a>
V428 — Average Track Width	156 cm	—	—
V429 — Overall Length	499 cm	—	—
V430 — Overall Width (OAW)	185 cm	—	—
V431 — Front Overhang	109 cm	—	—
V432 — Rear Overhang	110 cm	—	—
V433 — Undeformed End Width (UEW)	160 cm	—	—
V434 — Engine Displacement	3.6 l	—	—
V435 — Engine: Number of Cylinders	06	—	—
V436 — Direct Damage Length (DDL)	160 cm	—	—
V437 — Front End Overlap % (FEO)	98	98% or more	<a href="#">more</a>
V438 — Vehicle Overlap % (VOL)	93	—	—

## Case Vehicle

### Damage

### Description

Variable Number and Name	Code Value	Code Description	Other Options
V501 — Maximum Crush - Front	013 cm	—	—
V502 — Maximum Crush - Right Side	000 cm	No crush (or less than 1 cm.)	<a href="#">more</a>
V503 — Maximum Crush - Rear	000 cm	No crush (or less than 1 cm.)	<a href="#">more</a>
V504 — Maximum Crush - Left Side	000 cm	No crush (or less than 1 cm.)	<a href="#">more</a>
V505 — Maximum Crush - Roof	000 cm	No crush (or less than 1 cm.)	<a href="#">more</a>
V506 — Maximum Crush - Other	000 cm	No crush (or less than 1 cm.)	<a href="#">more</a>
V507 — Are Events In Chronological Order	1	Yes	<a href="#">more</a>
V508 — Event 1 Impact Location	1	On Roadway	<a href="#">more</a>
V509 — Event 1 Impact Configuration	13	FRONT of case veh - SIDE of contacted Vehicle	<a href="#">more</a>
V510 — Event 1 Object/Vehicle Contacted	16	Pickup truck with canopy/shell cover	<a href="#">more</a>
V511 — Event 2 Impact Location	8	No 2nd event	<a href="#">more</a>
V512 — Event 2 Impact Configuration	88	No 2nd event	<a href="#">more</a>
V513 — Event 2 Object/Vehicle Contacted	00	No object/vehicle contacted	<a href="#">more</a>
V514 — Event 3 Impact Location	8	No 3rd event	<a href="#">more</a>
V515 — Event 3 Impact Configuration	88	No 3rd event	<a href="#">more</a>
V516 — Event 3 Object/Vehicle Contacted	00	No object/vehicle contacted	<a href="#">more</a>
V517 — Event 4 Impact Location	8	No 4th event	<a href="#">more</a>
V518 — Event 4 Impact Configuration	88	No 4th event	<a href="#">more</a>

V519 — Event 4 Object/Vehicle Contacted	00	No object/vehicle contacted	<a href="#">more</a>
V520 — Event 5 Impact Location	8	No 5th event	<a href="#">more</a>
V521 — Event 5 Impact Configuration	88	No 5th event	<a href="#">more</a>
V522 — Event 5 Object/Vehicle Contacted	00	No object/vehicle contacted	<a href="#">more</a>
V523 — Event 6 Impact Location	8	No 6th event	<a href="#">more</a>
V524 — Event 6 Impact Configuration	88	No 6th event	<a href="#">more</a>
V525 — Event 6 Object/Vehicle Contacted	00	No object/vehicle contacted	<a href="#">more</a>
V526 — Event 7 Impact On Road	8	No 7th event	<a href="#">more</a>
V527 — Event 7 Impact Configuration	88	No 7th event	<a href="#">more</a>
V528 — Event 7 Object/Vehicle Contacted	00	No object/vehicle contacted	<a href="#">more</a>
V529 — Primary CDC Case Vehicle -event Number	1	Event 1	<a href="#">more</a>
V530 — Primary CDC Case Vehicle - impact speed	999	Unknown	<a href="#">more</a>
V531 — Primary CDC Case Vehicle - Estimated By	1	Investigator	<a href="#">more</a>
V532 — Primary CDC Case Vehicle -crush	013	—	—
V533 — Primary CDC Case Vehicle -clock #1	12	12 o'clock	<a href="#">more</a>
V534 — Primary CDC Case Vehicle letter 1 #1	06	F - Front	<a href="#">more</a>
V535 — Primary CDC Case Vehicle letter 2 #1	04	D - Distributed (Side or End)	<a href="#">more</a>
V536 — Primary CDC Case Vehicle letter 3 #1	05	E - Everything below belt line	<a href="#">more</a>
V537 — Primary CDC Case Vehicle letter 4 #1	23	W - Wide impact area	<a href="#">more</a>
V538 — Primary CDC Case Vehicle Extent #1	01	Extent 1	<a href="#">more</a>
V539 — Primary CDC Case Vehicle -CDC #1	12FDEW1	—	—

V541 — Primary CDC Case Vehicle letter 1 #2	00	Missing Data/Not applicable	<a href="#">more</a>
V542 — Primary CDC Case Vehicle letter 2 #2	00	Missing Data/Not applicable	<a href="#">more</a>
V543 — Primary CDC Case Vehicle letter 3 #2	00	Missing Data/Not applicable	<a href="#">more</a>
V544 — Primary CDC Case Vehicle letter 4 #2	00	Missing Data/Not applicable	<a href="#">more</a>
V545 — Primary CDC Case Vehicle Extent #2	00	Missing Data/Not applicable	<a href="#">more</a>
V546 — Primary CDC Case Vehicle -CDC #2	9800000	—	—
V547 — Primary CDC Contacted Vehicle - Impact Speed	999	Unknown	<a href="#">more</a>
V548 — Primary CDC Contacted Vehicle - Estimated By	1	Investigator	<a href="#">more</a>
V549 — Primary CDC Contacted Vehicle -crush	040	—	—
V550 — Primary CDC Contacted Vehicle -clock #1	03	3 o'clock	<a href="#">more</a>
V551 — Primary CDC Contacted Vehicle letter 1 #1	18	R - Right Side	<a href="#">more</a>
V552 — Primary CDC Contacted Vehicle letter 2 #1	26	Z - Side or end (B + P or R + C)	<a href="#">more</a>
V553 — Primary CDC Contacted Vehicle letter 3 #1	05	E - Everything below belt line	<a href="#">more</a>
V554 — Primary CDC Contacted Vehicle letter 4 #1	23	W - Wide impact area	<a href="#">more</a>
V555 — Primary CDC Contacted Vehicle Extent #1	03	Extent 3	<a href="#">more</a>
V556 — Primary CDC Contacted Vehicle -CDC #1	03RZEW3	—	—
V558 — Primary CDC Contacted Vehicle letter 1 #2	00	Missing Data/Not applicable	<a href="#">more</a>
V559 — Primary CDC Contacted Vehicle letter 2 #2	00	Missing Data/Not applicable	<a href="#">more</a>
V560 — Primary CDC Contacted Vehicle letter 3 #2	00	Missing Data/Not applicable	<a href="#">more</a>
V561 — Primary CDC Contacted Vehicle letter 4 #2	00	Missing Data/Not applicable	<a href="#">more</a>



V562 — Primary CDC Contacted Vehicle Extent #2	00	Missing Data/Not applicable	<a href="#">more</a>
V563 — Primary CDC Contacted Vehicle -CDC #2	9800000	—	—
V564 — Secondary CDC Case Vehicle - Event No	8	Not applicable	<a href="#">more</a>
V565 — Secondary CDC Case Vehicle - Impact Speed	998	Not Applicable	<a href="#">more</a>
V566 — Secondary CDC Case Vehicle - Estimated By	8	Not applicable (no vehicle/no impact)	<a href="#">more</a>
V567 — Secondary CDC Case Vehicle -crush	998	Not Applicable	<a href="#">more</a>
V568 — Secondary CDC Case Vehicle -clock #1	98	Not Applicable	<a href="#">more</a>
V569 — Secondary CDC Case Vehicle letter 1 #1	00	Missing Data/Not applicable	<a href="#">more</a>
V570 — Secondary CDC Case Vehicle letter 2 #1	00	Missing Data/Not applicable	<a href="#">more</a>
V571 — Secondary CDC Case Vehicle letter 3 #1	00	Missing Data/Not applicable	<a href="#">more</a>
V572 — Secondary CDC Case Vehicle letter 4 #1	00	Missing Data/Not applicable	<a href="#">more</a>
V573 — Secondary CDC Case Vehicle Extent #1	00	Missing Data/Not applicable	<a href="#">more</a>
V574 — Secondary CDC Case Vehicle -CDC #1	9800000	—	—
V576 — Secondary CDC Case Vehicle letter 1 #2	00	Missing Data/Not applicable	<a href="#">more</a>
V577 — Secondary CDC Case Vehicle letter 2 #2	00	Missing Data/Not applicable	<a href="#">more</a>
V578 — Secondary CDC Case Vehicle letter 3 #2	00	Missing Data/Not applicable	<a href="#">more</a>
V579 — Secondary CDC Case Vehicle letter 4 #2	00	Missing Data/Not applicable	<a href="#">more</a>
V580 — Secondary CDC Case Vehicle Extent #2	00	Missing Data/Not applicable	<a href="#">more</a>
V581 — Secondary CDC Case Vehicle -CDC #2	9800000	—	—
V582 — Secondary CDC Contacted Vehicle - Impact Speed	998	Not Applicable	<a href="#">more</a>

V583 — Secondary CDC Contacted Vehicle - Estimated By	8	Not applicable (no vehicle/no impact)	<a href="#">more</a>
V584 — Secondary CDC Contacted Vehicle - crush	998	Not Applicable	<a href="#">more</a>
V585 — Secondary CDC Contacted Vehicle -clock #1	98	Not Applicable	<a href="#">more</a>
V586 — Secondary CDC Contacted Vehicle letter 1 #1	00	Missing Data/Not applicable	<a href="#">more</a>
V587 — Secondary CDC Contacted Vehicle letter 2 #1	00	Missing Data/Not applicable	<a href="#">more</a>
V588 — Secondary CDC Contacted Vehicle letter 3 #1	00	Missing Data/Not applicable	<a href="#">more</a>
V589 — Secondary CDC Contacted Vehicle letter 4 #1	00	Missing Data/Not applicable	<a href="#">more</a>
V590 — Secondary CDC Contacted Vehicle Extent #1	00	Missing Data/Not applicable	<a href="#">more</a>
V591 — Secondary CDC Contacted Vehicle -CDC #1	9800000	—	—
V593 — Secondary CDC Contacted Vehicle letter 1 #2	00	Missing Data/Not applicable	<a href="#">more</a>
V594 — Secondary CDC Contacted Vehicle letter 2 #2	00	Missing Data/Not applicable	<a href="#">more</a>
V595 — Secondary CDC Contacted Vehicle letter 3 #2	00	Missing Data/Not applicable	<a href="#">more</a>
V596 — Secondary CDC Contacted Vehicle letter 4 #2	00	Missing Data/Not applicable	<a href="#">more</a>
V597 — Secondary CDC Contacted Vehicle Extent #2	00	Missing Data/Not applicable	<a href="#">more</a>
V598 — Secondary CDC Contacted Vehicle -CDC #2	9800000	—	—

## Crash Severity

Variable Number and Name	Code Value	Code Description	Other Options
V601 — Case Vehicle Primary Impact Number	1	—	—
V602 — Primary Impact Total Delta-V	018 kph	—	—
V603 — Primary Case Vehicle Reconstructed Longitudinal Delta-V	-018 kph	—	—
V604 — Primary Case Vehicle Reconstructed Lateral Delta-V	0003 kph	—	—
V605 — Primary Case Vehicle Reconstructed Crush Energy	0198 kJ	—	—
V606 — Primary Impact Case Vehicle -reconstruction	22	Reconstructed, moderate confidence level	<a href="#">more</a>
V607 — Primary Case Vehicle Reconstruction Mode	2	CDC & detailed damage	<a href="#">more</a>
V608 — Primary Contacted Vehicle Reconstructed Total Delta-V	022 kph	—	—
V609 — Primary Contacted Vehicle Reconstructed Longitudinal Delta-V	-004 kph	—	—
V610 — Primary Contacted Vehicle Reconstructed Lateral Delta-V	-022 kph	—	—
V611 — Primary Contacted Vehicle Reconstructed Crush Energy	0315 kJ	—	—
V612 — Case Vehicle Secondary Impact Number	8	—	—
V613 — Secondary Case Vehicle Reconstructed Total Delta-V	888	N/A	<a href="#">more</a>
V614 — Secondary Case Vehicle Reconstructed Longitudinal Delta-V	8888	—	—
V615 — Secondary Case Vehicle Reconstructed Lateral Delta-V	8888	—	—
V616 — Secondary Case Vehicle Reconstructed Crush Energy	8888	—	—
V617 — Secondary Case Vehicle Reconstruction Note	88	—	—

V618 — Secondary Case Vehicle Reconstruction Mode	8	Not applicable	<a href="#">more</a>
V619 — Secondary Contacted Vehicle Reconstructed Total Delta-V	888	N/A	<a href="#">more</a>
V620 — Secondary Contacted Vehicle Reconstructed Longitudinal Delta-V	8888	—	—
V621 — Secondary Contacted Vehicle Reconstructed Lateral Delta-V	8888	—	—
V622 — Secondary Contacted Vehicle Reconstructed Crush Energy	8888	—	—
V623 — Case Vehicle Primary Impact Number	1	—	—
V624 — Primary Case Vehicle Reconstructed Total EBS	018 kph	—	—
V625 — Primary Case Vehicle Reconstructed Longitudinal EBS	-018 kph	—	—
V626 — Primary Case Vehicle Reconstructed Lateral EBS	0003 kph	—	—
V627 — Primary Case Vehicle Reconstructed Crush Energy	0198 kJ	—	—
V628 — Primary Case Vehicle Reconstruction Note	22	Reconstructed, moderate confidence level	<a href="#">more</a>
V629 — Primary Case Vehicle Reconstruction Mode	2	CDC & detailed damage	<a href="#">more</a>
V630 — Primary Contacted Vehicle Reconstruction Total EBS	022 kph	—	—
V631 — Primary Contacted Vehicle Reconstruction Longitudinal EBS	-004 kph	—	—
V632 — Primary Contacted Vehicle Reconstruction Lateral EBS	-022 kph	—	—
V633 — Primary Contacted Vehicle Reconstruction Crush Energy	0315 kJ	—	—
V634 — Case Vehicle Secondary Impact Number	8	Not applicable	<a href="#">more</a>
V635 — Secondary Case Vehicle Reconstruction Total EBS	888	N/A	<a href="#">more</a>
V636 — Secondary Case Vehicle Reconstruction Longitudinal EBS	8888	—	—
V637 — Secondary Case Vehicle Reconstruction Lateral EBS	8888	—	—

V638 — Secondary Case Vehicle Reconstruction Crush Energy	8888	—	—
V639 — Secondary Case Vehicle Reconstruction Note	88	—	—
V640 — Secondary Case Vehicle Reconstruction Mode	8	Not applicable	<a href="#">more</a>
V641 — Secondary Contacted Vehicle Reconstruction Total EBS	888	N/A	<a href="#">more</a>
V642 — Secondary Contacted Vehicle Reconstruction Longitudinal EBS	8888	—	—
V643 — Secondary Contacted Vehicle Reconstruction Lateral EBS	8888	—	—
V644 — Secondary Contacted Vehicle Reconstruction Crush Energy	8888	—	—
V645 — Case Vehicle Reconstructed Impact Number	1	—	—
V646 — Case Vehicle Impact 1 Plane	1	Bumper	<a href="#">more</a>
V647 — Case Vehicle Impact 1 Direct Damage Length [DDL]	160 cm	—	—
V648 — Case Vehicle Impact 1 Max Crush	013 cm	—	—
V649 — Case Vehicle Impact 1 Field-L	129 cm	—	—
V650 — Case Vehicle Impact 1 C1	000 cm	No Crush	<a href="#">more</a>
V651 — Case Vehicle Impact 1 C2	007 cm	—	—
V652 — Case Vehicle Impact 1 C3	012 cm	—	—
V653 — Case Vehicle Impact 1 C4	013 cm	—	—
V654 — Case Vehicle Impact 1 C5	010 cm	—	—
V655 — Case Vehicle Impact 1 C6	003 cm	—	—
V656 — Case Vehicle Impact 1 +/- D	0000 cm	—	—
V657 — Case Vehicle Reconstructed Impact Number	1	—	—
V658 — Case Vehicle Impact 2 Plane	4	Above sill	<a href="#">more</a>
V659 — Case Vehicle Impact 2 Direct Damage Length [DDL]	127 cm	—	—
V660 — Case Vehicle Impact 2 Max	040 cm	—	—

Crush			
V661 — Case Vehicle Impact 2 Field-L	134 cm	—	—
V662 — Case Vehicle Impact 2 C1	000 cm	No Crush	<a href="#">more</a>
V663 — Case Vehicle Impact 2 C2	040 cm	—	—
V664 — Case Vehicle Impact 2 C3	040 cm	—	—
V665 — Case Vehicle Impact 2 C4	031 cm	—	—
V666 — Case Vehicle Impact 2 C5	026 cm	—	—
V667 — Case Vehicle Impact 2 C6	008 cm	—	—
V668 — Case Vehicle Impact 2 +/- D	-058 cm	—	—
V669 — Other Vehicle Reconstructed Impact Number	2	—	—
V670 — Other Vehicle Impact 1 Plane	8	Not applicable	<a href="#">more</a>
V671 — Other Vehicle Impact 1 Direct Damage Length [DDL]	998	Not applicable	<a href="#">more</a>
V672 — Other Vehicle Impact 1 Max Crush	998	Not applicable	<a href="#">more</a>
V673 — Other Vehicle Impact 1 Field-L	998	Not applicable	<a href="#">more</a>
V674 — Other Vehicle Impact 1 C1	998	Not applicable	<a href="#">more</a>
V675 — Other Vehicle Impact 1 C2	998	Not applicable	<a href="#">more</a>
V676 — Other Vehicle Impact 1 C3	998	Not applicable	<a href="#">more</a>
V677 — Other Vehicle Impact 1 C4	998	Not applicable	<a href="#">more</a>
V678 — Other Vehicle Impact 1 C5	998	Not applicable	<a href="#">more</a>
V679 — Other Vehicle Impact 1 C6	998	Not applicable	<a href="#">more</a>
V680 — Other Vehicle Impact 1 +/- D	9998	—	—
V681 — Other Vehicle Reconstructed Impact Number	2	—	—
V682 — Other Vehicle Impact 2 Plane	8	Not applicable	<a href="#">more</a>
V683 — Other Vehicle Impact 2 Direct Damage Length [DDL]	998	Not applicable	<a href="#">more</a>
V684 — Other Vehicle Impact 2 Max Crush	998	Not applicable	<a href="#">more</a>

V685 — Other Vehicle Impact 2 Field-L	998	Not applicable	<a href="#">more</a>
V686 — Other Vehicle Impact 2 C1	998	Not applicable	<a href="#">more</a>
V687 — Other Vehicle Impact 2 C2	998	Not applicable	<a href="#">more</a>
V688 — Other Vehicle Impact 2 C3	998	Not applicable	<a href="#">more</a>
V689 — Other Vehicle Impact 2 C4	998	Not applicable	<a href="#">more</a>
V690 — Other Vehicle Impact 2 C5	998	Not applicable	<a href="#">more</a>
V691 — Other Vehicle Impact 2 C6	998	Not applicable	<a href="#">more</a>
V692 — Other Vehicle Impact 2 +/- D	9998	—	—

## Case Vehicle

### Tires & Rims

Variable Number and Name	Code Value	Code Description	Other Options
V701 — Left Front Wheel Damaged	0	No	<a href="#">more</a>
V702 — Right Front Wheel Damaged	0	No	<a href="#">more</a>
V703 — Right Rear Wheel Damaged	0	No	<a href="#">more</a>
V704 — Left Rear Wheel Damaged	0	No	<a href="#">more</a>
V705 — Left Front Tire Tread Type	4	All Weather	<a href="#">more</a>
V706 — Right Front Tire Tread Type	4	All Weather	<a href="#">more</a>
V707 — Right Rear Tire Tread Type	4	All Weather	<a href="#">more</a>
V708 — Left Rear Tire Tread Type	4	All Weather	<a href="#">more</a>
V709 — Left Front Carcass Construction	3	Radial	<a href="#">more</a>
V710 — Right Front Carcass Construction	3	Radial	<a href="#">more</a>
V711 — Right Rear Carcass Construction	3	Radial	<a href="#">more</a>
V712 — Left Rear Carcass Construction	3	Radial	<a href="#">more</a>
V717 — Left Front Tire Size	P22560R16	—	—
V718 — Right Front Tire Size	P22560R16	—	—
V719 — Right Rear Tire Size	P22560R16	—	—
V720 — Left Rear Tire Size	P22560R16	—	—



## Case Vehicle

### Fuel, Tank, Fire

<b>Variable Number and Name</b>	<b>Code Value</b>	<b>Code Description</b>	<b>Other Options</b>
V801 — Propulsive Fuel Type	1	Gasoline	<a href="#">more</a>
V802 — Main Tank Location	322	Within frame/centered laterally - within vertically	<a href="#">more</a>
V803 — Main Filler Cap Location	113	Left of frame laterally - above vertically	<a href="#">more</a>
V804 — Main Tank Material	1	Steel	<a href="#">more</a>
V805 — Aux Tank Type	8	Not applicable (not equipped)	<a href="#">more</a>
V806 — Aux Tank Location	888	Not applicable (not equipped)	<a href="#">more</a>
V807 — Aux Filler Cap Location	888	Not applicable (not equipped)	<a href="#">more</a>
V808 — Aux Tank Material	8	Not applicable	<a href="#">more</a>
V901 — Fuel Leakage From Crash	0	No	<a href="#">more</a>
V1001 — Fire In Or On Case Vehicle	0	No	<a href="#">more</a>

## Case Vehicle

### Exterior

Variable Number and Name	Code Value	Code Description	Other Options
V1101 — Hood Latch Released	0	No	<a href="#">more</a>
V1102 — Hood Latch Damaged	1	Yes	<a href="#">more</a>
V1103 — Hood Latch Jammed	1	Yes	<a href="#">more</a>
V1104 — Left Hood Hinge Damaged	0	No	<a href="#">more</a>
V1105 — Left Hood Hinge Separated	8	Not applicable	<a href="#">more</a>
V1106 — Right Hood Hinge Damaged	0	No	<a href="#">more</a>
V1107 — Right Hood Hinge Separated	8	Not applicable	<a href="#">more</a>
V1108 — Hood Remained On Vehicle	1	Yes	<a href="#">more</a>
V1109 — Rear Hood Edge Elevated	1	Yes	<a href="#">more</a>
V1110 — Edge Contacted Windshield	0	No	<a href="#">more</a>
V1111 — Edge Penetrated Windshield	0	No	<a href="#">more</a>
V1112 — Hood Latch Location	1	Front of Vehicle	<a href="#">more</a>
V1113 — Eng/Transmissn Mount Separation	0	No	<a href="#">more</a>
V1114 — Steerng Column Flex Coupling	9	Unknown if equipped	<a href="#">more</a>
V1115 — Steerng Column Coupling Damaged	9	Unknown	<a href="#">more</a>
V1116 — Steerng Column Coupling Separated	9	Unknown	<a href="#">more</a>
V1117 — Eng Comp Telescopng Unit	88	Not collected	<a href="#">more</a>
V1118 — Comp Orig/Telescopd Diff	888	Not collected	<a href="#">more</a>

V1119 — Left Side Body Mount Separation	8	Not applicable (unitized)	<a href="#">more</a>
V1120 — Upper Left A-pillar Separation	0	No	<a href="#">more</a>
V1121 — Lower Left A-pillar Separation	0	No	<a href="#">more</a>
V1122 — Upper Left B-pillar Separation	0	No	<a href="#">more</a>
V1123 — Lower Left B-pillar Separation	0	No	<a href="#">more</a>
V1124 — Upper Left C-pillar Separation	0	No	<a href="#">more</a>
V1125 — Lower Left C-pillar Separation	0	No	<a href="#">more</a>
V1126 — Upper Left D-pillar Separation	8	Not applicable (not equipped)	<a href="#">more</a>
V1127 — Lower Left D-pillar Separation	8	Not applicable (not equipped)	<a href="#">more</a>
V1128 — Left Front Door Opening Cause	0	Door did not open	<a href="#">more</a>
V1129 — Left Rear Door Opening Cause	0	Door did not open	<a href="#">more</a>
V1130 — Left Front Door Jammed Closed	0	No	<a href="#">more</a>
V1131 — Left Rear Door Jammed Closed	0	No	<a href="#">more</a>
V1132 — Rear Door Type	0	No door (includes pickups)	<a href="#">more</a>
V1133 — Rear Door Opening Cause	8	Not applicable (no rear door)	<a href="#">more</a>
V1134 — Rear Door Jammed Closed	8	Not applicable (no rear door)	<a href="#">more</a>
V1135 — Luggage Partition Damagd	0	No	<a href="#">more</a>
V1136 — Spare Tire Status	8	Not collected	<a href="#">more</a>
V1137 — Trailer Hitch Type	0	No hitch	<a href="#">more</a>
V1138 — Trailer Type	0	No trailer	<a href="#">more</a>
V1139 — Right Side Body Mount Separation	8	Not applicable (unitized)	<a href="#">more</a>

V1140 — Upper Right A-pillar Separation	0	No	<a href="#">more</a>
V1141 — Lower Right A-pillar Separation	0	No	<a href="#">more</a>
V1142 — Upper Right B-pillar Separation	0	No	<a href="#">more</a>
V1143 — Lower Right B-pillar Separation	0	No	<a href="#">more</a>
V1144 — Upper Right C-pillar Separation	0	No	<a href="#">more</a>
V1145 — Lower Right C-pillar Separation	0	No	<a href="#">more</a>
V1146 — Upper Right D-pillar Separation	8	Not applicable (not equipped)	<a href="#">more</a>
V1147 — Lower Right D-pillar Separation	8	Not applicable (not equipped)	<a href="#">more</a>
V1148 — Right Front Door Opening Cause	00	Door did not open	<a href="#">more</a>
V1149 — Right Rear Door Opening Cause	00	Door did not open	<a href="#">more</a>
V1150 — Right Front Door Jammed Closed	0	No	<a href="#">more</a>
V1151 — Right Rear Door Jammed Closed	0	No	<a href="#">more</a>
V1152 — Van Rear Door Type	8	Not applicable (not a van)	<a href="#">more</a>
V1153 — Windshield Cracked		Yes	<a href="#">more</a>
V1154 — Windshield Broken	0	No	<a href="#">more</a>
V1155 — Windshield Cracked or Broken by Occupant	0	No	<a href="#">more</a>
V1156 — Bond Separation Extent	0	None	<a href="#">more</a>
V1157 — Windshield Code		—	—
V1158 — Did Sun/T Roof Open	0	No	<a href="#">more</a>

## Case Vehicle

### Steering

#### Column/Rim

Variable Number and Name	Code Value	Code Description	Other Options
V1201 — Steering Wheel Rim Damage	0	None	<a href="#">more</a>
V1202 — Number of Steering Wheel Spokes	4	4 spokes	<a href="#">more</a>
V1203 — Steering Wheel Spoke Damage	0	None	<a href="#">more</a>
V1204 — Column Tilt Feature	2	Up	<a href="#">more</a>
V1205 — Column Swing-away Feature	0	Not equipped	<a href="#">more</a>
V1206 — Column Telescoping Feature	0	Not equipped	<a href="#">more</a>
V1207 — Wheel Energy Absorb Device	8	Not collected	<a href="#">more</a>
V1208 — Wheel Ea Orig/Damaged Diff	888	Not collected	<a href="#">more</a>
V1209 — Column Energy Absorb Device	88	Not collected	<a href="#">more</a>
V1210 — Column Ea Orig/Comprss Diff	888	Not collected	<a href="#">more</a>
V1211 — Shear Capsule Separation	888	Not collected	<a href="#">more</a>
V1212 — Column Vertical Rotation	0	No apparent rotation	<a href="#">more</a>
V1213 — Column Lateral Rotation	0	No apparent rotation	<a href="#">more</a>
V1214 — Steering Wheel Hub Damage	0	None	<a href="#">more</a>

## Case Vehicle

### Intrusion

Variable Number and Name	Code Value	Code Description	Other Options
V1301 — Occupant Compartment Intrusion	0	No	<a href="#">more</a>
V1302 — Was Intrusion Catastrophic	8	Not applicable	<a href="#">more</a>
V1303 — Intrusion Number 01	00	No Intrusion, None	<a href="#">more</a>
V1304 — Intrusion 01 Occupant Space Number	00	No Intrusion, None	<a href="#">more</a>
V1305 — Intrusion 01 Intruding Object	00	No Intrusion, None	<a href="#">more</a>
V1306 — Intrusion 01 Assoc Event Number	0	No Intrusion, None	<a href="#">more</a>
V1307 — Intrusion 01 Max Intrusion X-axis	00 cm	0 cm or No Intrusion	<a href="#">more</a>
V1308 — Intrusion 01 Max Intrusion Y-axis	00 cm	0 cm or No Intrusion	<a href="#">more</a>
V1309 — Intrusion 01 Max Intrusion Z-axis	00 cm	0 cm or No Intrusion	<a href="#">more</a>
V1310 — Intrusion 01 Occupant Number	00	No contact or no intrusion	<a href="#">more</a>
V1311 — Intrusion 01 Injury Number	00	No injury or no intrusion	<a href="#">more</a>
V1312 — Intrusion 01 Occupant Number	00	No contact or no intrusion	<a href="#">more</a>
V1313 — Intrusion 01 Injury Number	99	Contact, injury unknown or data not collected	<a href="#">more</a>
V1314 — Intrusion Number 02	00	No Intrusion, None	<a href="#">more</a>
V1315 — Intrusion 02 Occupant Space Number	00	No Intrusion, None	<a href="#">more</a>
V1316 — Intrusion 02 Intruding Object	00	No Intrusion, None	<a href="#">more</a>
V1317 — Intrusion 02 Assoc Event Number	0	No Intrusion, None	<a href="#">more</a>

V1318 — Intrusion 02 Max Intrusion X-axis	00 cm	0 cm or No Intrusion	<a href="#">more</a>
V1319 — Intrusion 02 Max Intrusion Y-axis	00 cm	0 cm or No Intrusion	<a href="#">more</a>
V1320 — Intrusion 02 Max Intrusion Z-axis	00 cm	0 cm or No Intrusion	<a href="#">more</a>
V1321 — Intrusion 02 Occupant Number	00	No contact or no intrusion	<a href="#">more</a>
V1322 — Intrusion 02 Injury Number	00	No injury or no intrusion	<a href="#">more</a>
V1323 — Intrusion 02 Occupant Number	00	No contact or no intrusion	<a href="#">more</a>
V1324 — Intrusion 02 Injury Number	99	Contact, injury unknown or data not collected	<a href="#">more</a>
V1325 — Intrusion Number 03	00	No Intrusion, None	<a href="#">more</a>
V1326 — Intrusion 03 Occupant Space Number	00	No Intrusion, None	<a href="#">more</a>
V1327 — Intrusion 03 Intruding Object	00	No Intrusion, None	<a href="#">more</a>
V1328 — Intrusion 03 Assoc Event Number	0	No Intrusion, None	<a href="#">more</a>
V1329 — Intrusion 03 Max Intrusion X-axis	00 cm	0 cm or No Intrusion	<a href="#">more</a>
V1330 — Intrusion 03 Max Intrusion Y-axis	00 cm	0 cm or No Intrusion	<a href="#">more</a>
V1331 — Intrusion 03 Max Intrusion Z-axis	00 cm	0 cm or No Intrusion	<a href="#">more</a>
V1332 — Intrusion 03 Occupant Number	00	No contact or no intrusion	<a href="#">more</a>
V1333 — Intrusion 03 Injury Number	00	No injury or no intrusion	<a href="#">more</a>
V1334 — Intrusion 03 Occupant Number	00	No contact or no intrusion	<a href="#">more</a>
V1335 — Intrusion 03 Injury Number	99	Contact, injury unknown or data not collected	<a href="#">more</a>
V1336 — Intrusion Number 04	00	No Intrusion, None	<a href="#">more</a>
V1337 — Intrusion 04 Occupant Space Number	00	No Intrusion, None	<a href="#">more</a>
V1338 — Intrusion 04 Intruding	00	No Intrusion, None	<a href="#">more</a>

Object			
V1339 — Intrusion 04 Assoc Event Number	0	No Intrusion, None	<a href="#">more</a>
V1340 — Intrusion 04 Max Intrusion X-axis	00 cm	0 cm or No Intrusion	<a href="#">more</a>
V1341 — Intrusion 04 Max Intrusion Y-axis	00 cm	0 cm or No Intrusion	<a href="#">more</a>
V1342 — Intrusion 04 Max Intrusion Z-axis	00 cm	0 cm or No Intrusion	<a href="#">more</a>
V1343 — Intrusion 04 Occupant Number	00	No contact or no intrusion	<a href="#">more</a>
V1344 — Intrusion 04 Injury Number	00	No injury or no intrusion	<a href="#">more</a>
V1345 — Intrusion 04 Occupant Number	00	No contact or no intrusion	<a href="#">more</a>
V1346 — Intrusion 04 Injury Number	99	Contact, injury unknown or data not collected	<a href="#">more</a>
V1347 — Intrusion Number 05	00	No Intrusion, None	<a href="#">more</a>
V1348 — Intrusion 05 Occupant Space Number	00	No Intrusion, None	<a href="#">more</a>
V1349 — Intrusion 05 Intruding Object	00	No Intrusion, None	<a href="#">more</a>
V1350 — Intrusion 05 Assoc Event Number	0	No Intrusion, None	<a href="#">more</a>
V1351 — Intrusion 05 Max Intrusion X-axis	00 cm	0 cm or No Intrusion	<a href="#">more</a>
V1352 — Intrusion 05 Max Intrusion Y-axis	00 cm	0 cm or No Intrusion	<a href="#">more</a>
V1353 — Intrusion 05 Max Intrusion Z-axis	00 cm	0 cm or No Intrusion	<a href="#">more</a>
V1354 — Intrusion 05 Occupant Number	00	No contact or no intrusion	<a href="#">more</a>
V1355 — Intrusion 05 Injury Number	00	No injury or no intrusion	<a href="#">more</a>
V1356 — Intrusion 05 Occupant Number	00	No contact or no intrusion	<a href="#">more</a>
V1357 — Intrusion 05 Injury Number	99	Contact, injury unknown or data not collected	<a href="#">more</a>
V1358 — Intrusion Number 06	00	No Intrusion, None	<a href="#">more</a>



V1359 — Intrusion 06 Occupant Space Number	00	No Intrusion, None	<a href="#">more</a>
V1360 — Intrusion 06 Intruding Object	00	No Intrusion, None	<a href="#">more</a>
V1361 — Intrusion 06 Assoc Event Number	0	No Intrusion, None	<a href="#">more</a>
V1362 — Intrusion 06 Max Intrusion X-axis	00 cm	0 cm or No Intrusion	<a href="#">more</a>
V1363 — Intrusion 06 Max Intrusion Y-axis	00 cm	0 cm or No Intrusion	<a href="#">more</a>
V1364 — Intrusion 06 Max Intrusion Z-axis	00 cm	0 cm or No Intrusion	<a href="#">more</a>
V1365 — Intrusion 06 Occupant Number	00	No contact or no intrusion	<a href="#">more</a>
V1366 — Intrusion 06 Injury Number	00	No injury or no intrusion	<a href="#">more</a>
V1367 — Intrusion 06 Occupant Number	00	No contact or no intrusion	<a href="#">more</a>
V1368 — Intrusion 06 Injury Number	99	Contact, injury unknown or data not collected	<a href="#">more</a>
V1369 — Intrusion Number 07	00	No Intrusion, None	<a href="#">more</a>
V1370 — Intrusion 07 Occupant Space Number	00	No Intrusion, None	<a href="#">more</a>
V1371 — Intrusion 07 Intruding Object	00	No Intrusion, None	<a href="#">more</a>
V1372 — Intrusion 07 Assoc Event Number	0	No Intrusion, None	<a href="#">more</a>
V1373 — Intrusion 07 Max Intrusion X-axis	00 cm	0 cm or No Intrusion	<a href="#">more</a>
V1374 — Intrusion 07 Max Intrusion Y-axis	00 cm	0 cm or No Intrusion	<a href="#">more</a>
V1375 — Intrusion 07 Max Intrusion Z-axis	00 cm	0 cm or No Intrusion	<a href="#">more</a>
V1376 — Intrusion 07 Occupant Number	00	No contact or no intrusion	<a href="#">more</a>
V1377 — Intrusion 07 Injury Number	00	No injury or no intrusion	<a href="#">more</a>
V1378 — Intrusion 07 Occupant Number	00	No contact or no intrusion	<a href="#">more</a>

V1379 — Intrusion 07 Injury Number	99	Contact, injury unknown or data not collected	<a href="#">more</a>
V1380 — Intrusion Number 08	00	No Intrusion, None	<a href="#">more</a>
V1381 — Intrusion 08 Occupant Space Number	00	No Intrusion, None	<a href="#">more</a>
V1382 — Intrusion 08 Intruding Object	00	No Intrusion, None	<a href="#">more</a>
V1383 — Intrusion 08 Assoc Event Number	0	No Intrusion, None	<a href="#">more</a>
V1384 — Intrusion 08 Max Intrusion X-axis	00 cm	0 cm or No Intrusion	<a href="#">more</a>
V1385 — Intrusion 08 Max Intrusion Y-axis	00 cm	0 cm or No Intrusion	<a href="#">more</a>
V1386 — Intrusion 08 Max Intrusion Z-axis	00 cm	0 cm or No Intrusion	<a href="#">more</a>
V1387 — Intrusion 08 Occupant Number	00	No contact or no intrusion	<a href="#">more</a>
V1388 — Intrusion 08 Injury Number	00	No injury or no intrusion	<a href="#">more</a>
V1389 — Intrusion 08 Occupant Number	00	No contact or no intrusion	<a href="#">more</a>
V1390 — Intrusion 08 Injury Number	99	Contact, injury unknown or data not collected	<a href="#">more</a>
V1391 — Intrusion Number 09	00	No Intrusion, None	<a href="#">more</a>
V1392 — Intrusion 09 Occupant Space Number	00	No Intrusion, None	<a href="#">more</a>
V1393 — Intrusion 09 Intruding Object	00	No Intrusion, None	<a href="#">more</a>
V1394 — Intrusion 09 Assoc Event Number	0	No Intrusion, None	<a href="#">more</a>
V1395 — Intrusion 09 Max Intrusion X-axis	00 cm	0 cm or No Intrusion	<a href="#">more</a>
V1396 — Intrusion 09 Max Intrusion Y-axis	00 cm	0 cm or No Intrusion	<a href="#">more</a>
V1397 — Intrusion 09 Max Intrusion Z-axis	00 cm	0 cm or No Intrusion	<a href="#">more</a>
V1398 — Intrusion 09 Occupant Number	00	No contact or no intrusion	<a href="#">more</a>
V1399 — Intrusion 09 Injury	00	No injury or no intrusion	<a href="#">more</a>

Number			
V1400 — Intrusion 09 Occupant Number	00	No contact or no intrusion	<a href="#">more</a>
V1401 — Intrusion 09 Injury Number	99	Contact, injury unknown or data not collected	<a href="#">more</a>
V1402 — Intrusion Number 10	00	No Intrusion, None	<a href="#">more</a>
V1403 — Intrusion 10 Occupant Space Number	00	No Intrusion, None	<a href="#">more</a>
V1404 — Intrusion 10 Intruding Object	00	No Intrusion, None	<a href="#">more</a>
V1405 — Intrusion 10 Assoc Event Number	0	No Intrusion, None	<a href="#">more</a>
V1406 — Intrusion 10 Max Intrusion X-axis	00 cm	0 cm or No Intrusion	<a href="#">more</a>
V1407 — Intrusion 10 Max Intrusion Y-axis	00 cm	0 cm or No Intrusion	<a href="#">more</a>
V1408 — Intrusion 10 Max Intrusion Z-axis	00 cm	0 cm or No Intrusion	<a href="#">more</a>
V1409 — Intrusion 10 Occupant Number	00	No contact or no intrusion	<a href="#">more</a>
V1410 — Intrusion 10 Injury Number	00	No injury or no intrusion	<a href="#">more</a>
V1411 — Intrusion 10 Occupant Number	00	No contact or no intrusion	<a href="#">more</a>
V1412 — Intrusion 10 Injury Number	99	Contact, injury unknown or data not collected	<a href="#">more</a>
V1413 — Door Intrusion Number 01	88	Not Applicable	<a href="#">more</a>
V1414 — Door Intrusion Number 01 Cause	8	Not applicable	<a href="#">more</a>
V1415 — Door Intrusion Number 02	88	Not Applicable	<a href="#">more</a>
V1416 — Door Intrusion Number 02 Cause	8	Not applicable	<a href="#">more</a>
V1417 — Door Intrusion Number 03	88	Not Applicable	<a href="#">more</a>
V1418 — Door Intrusion Number 03 Cause	8	Not applicable	<a href="#">more</a>
V1419 — Door Intrusion 01	88	Not Applicable	<a href="#">more</a>

Component			
V1420 — Door Intrusion 01 Component Damaged 1	8	Not Applicable	<a href="#">more</a>
V1421 — Door Intrusion 01 Component Damaged 2	8	Not Applicable	<a href="#">more</a>
V1422 — Door Intrusion 02 Component	88	Not Applicable	<a href="#">more</a>
V1423 — Door Intrusion 02 Component Damaged 1	8	Not Applicable	<a href="#">more</a>
V1424 — Door Intrusion 02 Component Damaged 2	8	Not Applicable	<a href="#">more</a>
V1425 — Door Intrusion 03 Component	88	Not Applicable	<a href="#">more</a>
V1426 — Door Intrusion 03 Component Damaged 1	8	Not Applicable	<a href="#">more</a>
V1427 — Door Intrusion 03 Component Damaged 2	8	Not Applicable	<a href="#">more</a>
V1428 — Door Intrusion 04 Component	88	Not Applicable	<a href="#">more</a>
V1429 — Door Intrusion 04 Component Damaged 1	8	Not Applicable	<a href="#">more</a>
V1430 — Door Intrusion 04 Component Damaged 2	8	Not Applicable	<a href="#">more</a>

## Case Vehicle

### Airbag(s)

<b>Variable Number and Name</b>	<b>Code Value</b>	<b>Code Description</b>	<b>Other Options</b>
V1501 — Driver Airbag Equipped	1	Yes	<a href="#">more</a>
V1502 — Driver Airbag Deployed	1	Yes	<a href="#">more</a>
V1503 — Driver Airbag Condition	0	No Damage	<a href="#">more</a>
V1504 — Passenger Airbag Equip	1	Yes	<a href="#">more</a>
V1505 — Passenger Airbag Deployed	1	Yes	<a href="#">more</a>
V1506 — Passenger Airbag Condition	0	No Damage	<a href="#">more</a>
V1507 — Steering Wheel Airbag Tether	1	Yes	<a href="#">more</a>
V1508 — Driver Airbag Marked By Contact	0	No	<a href="#">more</a>
V1509 — Passenger Airbag Tether	0	No	<a href="#">more</a>
V1510 — Passenger Airbag Marked By Contact	0	No	<a href="#">more</a>

## Case Vehicle

### Interior

Variable Number and Name	Code Value	Code Description	Other Options
V1601 — Left Front Door Damaged	0	No	<a href="#">more</a>
V1602 — Right Front Door Damaged	0	No	<a href="#">more</a>
V1603 — Left Front Hardware Damaged	0	No	<a href="#">more</a>
V1604 — Right Front Hardware Damaged	0	No	<a href="#">more</a>
V1605 — Left Front Armrest Damaged	0	No	<a href="#">more</a>
V1606 — Right Front Armrest Damaged	0	No	<a href="#">more</a>
V1607 — Left Front Glass Damaged	0	No	<a href="#">more</a>
V1608 — Right Front Glass Damaged	0	No	<a href="#">more</a>
V1609 — Left Rear Door Area Damaged	0	No	<a href="#">more</a>
V1610 — Right Rear Door Area Damaged	0	No	<a href="#">more</a>
V1611 — Left Rear Hardware Damaged	0	No	<a href="#">more</a>
V1612 — Right Rear Hardware Damaged	0	No	<a href="#">more</a>
V1613 — Left Rear Armrest Damaged	0	No	<a href="#">more</a>
V1614 — Right Rear Armrest Damaged	0	No	<a href="#">more</a>
V1615 — Left Rear Glass Damaged	0	No	<a href="#">more</a>
V1616 — Right Rear Glass Damaged	0	No	<a href="#">more</a>
V1617 — Left Roof Side Rail Damaged	0	No	<a href="#">more</a>

V1618 — Right Roof Side Rail Damaged	0	No	<a href="#">more</a>
V1619 — Left B-pillar Damaged	0	No	<a href="#">more</a>
V1620 — Right B-pillar Damaged	0	No	<a href="#">more</a>
V1621 — Left C-pillar Damaged	0	No	<a href="#">more</a>
V1622 — Right C-pillar Damaged	0	No	<a href="#">more</a>
V1623 — Left D-pillar Damaged	8	Not applicable	<a href="#">more</a>
V1624 — Right D-pillar Damaged	8	Not applicable	<a href="#">more</a>
V1625 — Left Headlining Damaged	0	No	<a href="#">more</a>
V1626 — Right Headlining Damaged	0	No	<a href="#">more</a>
V1627 — Left Roof Structure Damaged	0	No	<a href="#">more</a>
V1628 — Right Roof Structure Damaged	0	No	<a href="#">more</a>
V1629 — Left T/Sun Roof Damaged	0	No	<a href="#">more</a>
V1630 — Right T/Sun Roof Damaged	0	No	<a href="#">more</a>
V1631 — Other Left Side Item Damaged	8	Not applicable	<a href="#">more</a>
V1632 — Other Right Side Item Damaged	8	Not applicable	<a href="#">more</a>
V1633 — Foot Controls Damaged	0	No	<a href="#">more</a>
V1634 — Ignition Key Damaged	0	No	<a href="#">more</a>
V1635 — Rear View Mirror Damaged	0	No	<a href="#">more</a>
V1636 — Sunvisor/Fitting Damaged	0	No	<a href="#">more</a>
V1637 — Windshield Molding Damaged	0	No	<a href="#">more</a>
V1638 — Left A-pillar Damaged	0	No	<a href="#">more</a>
V1639 — Right A-pillar Damaged	0	No	<a href="#">more</a>
V1640 — Center Console Damaged	0	No	<a href="#">more</a>

V1641 — Transmission Lever Damaged	0	No	<a href="#">more</a>
V1642 — Horn/Spoke Shroud Damaged	0	No	<a href="#">more</a>
V1643 — Upper Panel Damaged	0	No	<a href="#">more</a>
V1644 — Mid Panel Damaged	0	No	<a href="#">more</a>
V1645 — Lower Panel Damaged	3	No, occupant contact	<a href="#">more</a>
V1646 — Ashtray Damaged	0	No	<a href="#">more</a>
V1647 — Control Knob/Lever Damaged	0	No	<a href="#">more</a>
V1648 — Glove Compartment Area Damaged	0	No	<a href="#">more</a>
V1649 — Instruments Damaged	0	No	<a href="#">more</a>
V1650 — Park Brake Release Damaged	0	No	<a href="#">more</a>
V1651 — Park Brake Pedal Damaged	0	No	<a href="#">more</a>
V1652 — A/C Or Upper Vent Damaged	0	No	<a href="#">more</a>
V1653 — Heater Or A/C Duct Damaged	0	No	<a href="#">more</a>
V1654 — Radio Damaged	0	No	<a href="#">more</a>
V1655 — Other Item Damaged	8	Not applicable	<a href="#">more</a>
V1656 — Rear Window Damaged	0	No	<a href="#">more</a>
V1657 — Rear Window Header Damaged	0	No	<a href="#">more</a>
V1658 — Vertical Console Damaged	0	No	<a href="#">more</a>
V1659 — Roof Console Damaged	8	Not applicable	<a href="#">more</a>



## Case Vehicle

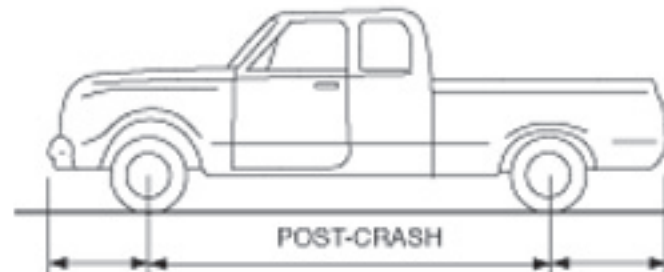
### Seats

Variable Number and Name	Code Value	Code Description	Other Options
V1701 — Driver Front Seat Type	05	Bucket	<a href="#">more</a>
V1702 — Passenger Front Seat Type	05	Bucket	<a href="#">more</a>
V1703 — Driver Seat Mount Type	1	Standard	<a href="#">more</a>
V1704 — Passenger Seat Mount Type	1	Standard	<a href="#">more</a>
V1705 — Driver Swivel Mechanism Equipped	0	No	<a href="#">more</a>
V1706 — Passenger Swivel Mechanism Equipped	0	No	<a href="#">more</a>
V1707 — Driver Seat Original Equipment	1	Yes	<a href="#">more</a>
V1708 — Passenger Seat Original Equipment	1	Yes	<a href="#">more</a>
V1709 — Driver Seat/Rear Occupant Contact	8	Not applicable	<a href="#">more</a>
V1710 — Passenger Seat/Rear Occupant Contact	8	Not applicable	<a href="#">more</a>
V1711 — Driver Seat Damage	0	None	<a href="#">more</a>
V1712 — Passenger Seat Damage	0	None	<a href="#">more</a>
V1713 — Center Front Armrest Damaged	0	No	<a href="#">more</a>
V1714 — Driver Seat Rotation	0	None apparent	<a href="#">more</a>
V1715 — Passenger Seat Rotation	0	None apparent	<a href="#">more</a>
V1716 — Driver Seat-back Type	3	Reclining	<a href="#">more</a>
V1717 — Passenger Seat-back Type	3	Reclining	<a href="#">more</a>
V1718 — Driver Seat-back Lock Type	1	Manual	<a href="#">more</a>
V1719 — Passenger Seat-back Lock Type	1	Manual	<a href="#">more</a>
V1720 — Driver Seat-back Lock Held	1	Yes	<a href="#">more</a>

V1721 — Passenger Seat-back Lock Held	1	Yes	<a href="#">more</a>
V1722 — Driver Recliner Mechanism Held	1	Yes	<a href="#">more</a>
V1723 — Passenger Recliner Mechanism Held	1	Yes	<a href="#">more</a>
V1724 — Driver Head Restraint Type	1	Adjustable	<a href="#">more</a>
V1725 — Passenger Head Restraint Type	1	Adjustable	<a href="#">more</a>
V1726 — Driver Head Rest Removed	0	No	<a href="#">more</a>
V1727 — Passenger Head Rest Removed	0	No	<a href="#">more</a>
V1728 — Driver Head Rest Adjustment	2	Down	<a href="#">more</a>
V1729 — Passenger Head Rest Adjustment	2	Down	<a href="#">more</a>
V1730 — Driver Head Rest Damage	0	None	<a href="#">more</a>
V1731 — Passenger Head Rest Damage	0	None	<a href="#">more</a>
V1732 — Driver Seat Adjustment Type	2	Power	<a href="#">more</a>
V1733 — Passenger Seat Adjustment Type	1	Manual	<a href="#">more</a>
V1734 — Driver Seat Adjustment Provided	3	6-way	<a href="#">more</a>
V1735 — Passenger Seat Adjustment Provided	2	4-way	<a href="#">more</a>
V1736 — Driver Seat Adjuster Damage	0	None	<a href="#">more</a>
V1737 — Passenger Seat Adjuster Damage	0	None	<a href="#">more</a>
V1738 — Driver Seat Adjuster Separation	8	Not applicable	<a href="#">more</a>
V1739 — Passenger Seat Adjuster Separation	8	Not applicable	<a href="#">more</a>
V1740 — Driver Seat Pre-crash Position	2	Middle	<a href="#">more</a>
V1741 — Passenger Seat Pre-crash Position	9	Unknown	<a href="#">more</a>
V1742 — Left Rear Seat Type	1	Non-folding	<a href="#">more</a>
V1743 — Right Rear Seat Type	1	Non-folding	<a href="#">more</a>

V1744 — Left Rear Seat Damaged	0	None	<a href="#">more</a>
V1745 — Right Rear Seat Damaged	0	None	<a href="#">more</a>
V1746 — Center Rear Armrest Damaged	8	Not applicable (No Center Armrest)	<a href="#">more</a>
V1747 — Left Rear Seat-back Left Lock Equipped	0	No	<a href="#">more</a>
V1748 — Right Rear Seat-back Left Lock Equipped	8	Not applicable	<a href="#">more</a>
V1749 — Left Rear Seat-back Left Lock Held	8	Not applicable	<a href="#">more</a>
V1750 — Right Rear Seat-back Left Lock Held	8	Not applicable	<a href="#">more</a>
V1751 — Left Rear Seat-back Right Lock Equipped	8	Not applicable	<a href="#">more</a>
V1752 — Right Rear Seat-back Right Lock Equipped	0	No	<a href="#">more</a>
V1753 — Left Rear Seat-back Right Lock Held	8	Not applicable	<a href="#">more</a>
V1754 — Right Rear Seat-back Right Lock Held	8	Not applicable	<a href="#">more</a>
V1755 — Left 3rd Seat Equipped	0	No	<a href="#">more</a>
V1756 — Right 3rd Seat Equipped	0	No	<a href="#">more</a>
V1757 — Left 3rd Seat Backrest Damaged	8	Not applicable	<a href="#">more</a>
V1758 — Right 3rd Seat Backrest Damaged	8	Not applicable	<a href="#">more</a>
V1759 — Left 3rd Seat Cushion Damaged	8	Not applicable	<a href="#">more</a>
V1760 — Right 3rd Seat Cushion Damaged	8	Not applicable	<a href="#">more</a>
V1761 — Rear Head Restraints	1	Equipped	<a href="#">more</a>

MEASUREMENTS IN CENTIMETERS



Bumper corner	<u>7</u>	<u>314</u>	<u>N/A</u>	Bumper corner
Stringline	<u>71</u>		<u>105</u>	Stringline

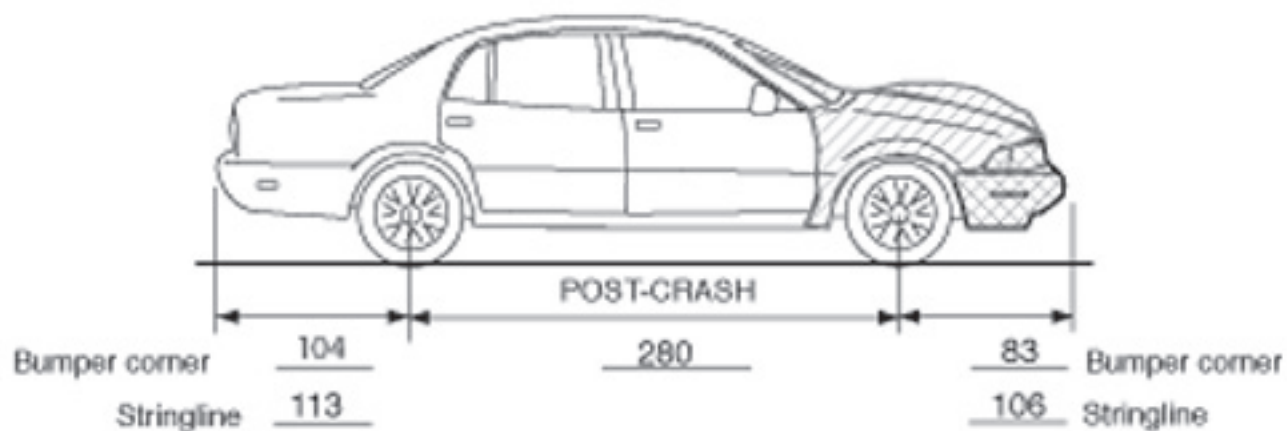
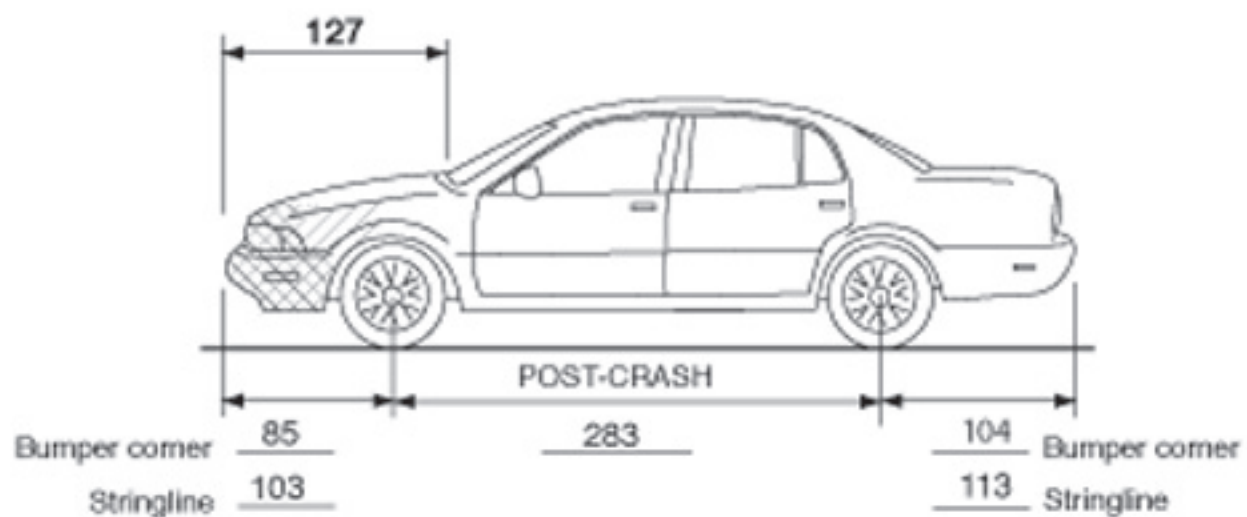
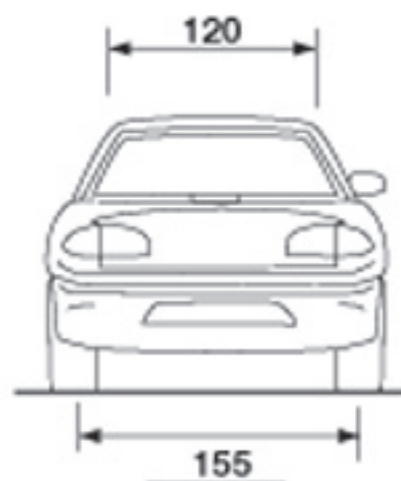
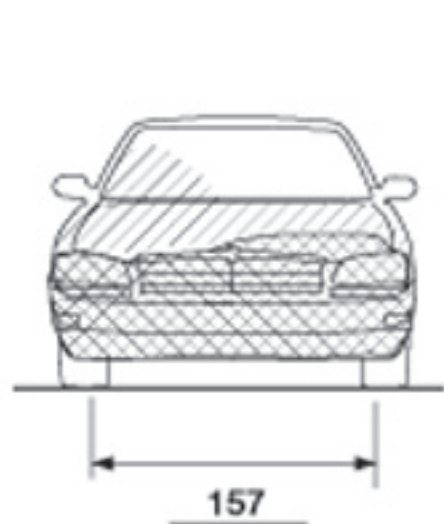


Bumper corner	<u>N/A</u>	<u>314</u>	<u>7</u>	Bumper corner
Stringline	<u>104</u>		<u>72</u>	Stringline

40  
Max. lateral crush  
to truck bed at  
frame level



MEASUREMENTS IN CENTIMETERS



WINDSHIELD MARK ON CASE VEHICLE:

SHADED  
SOLAR-RAY

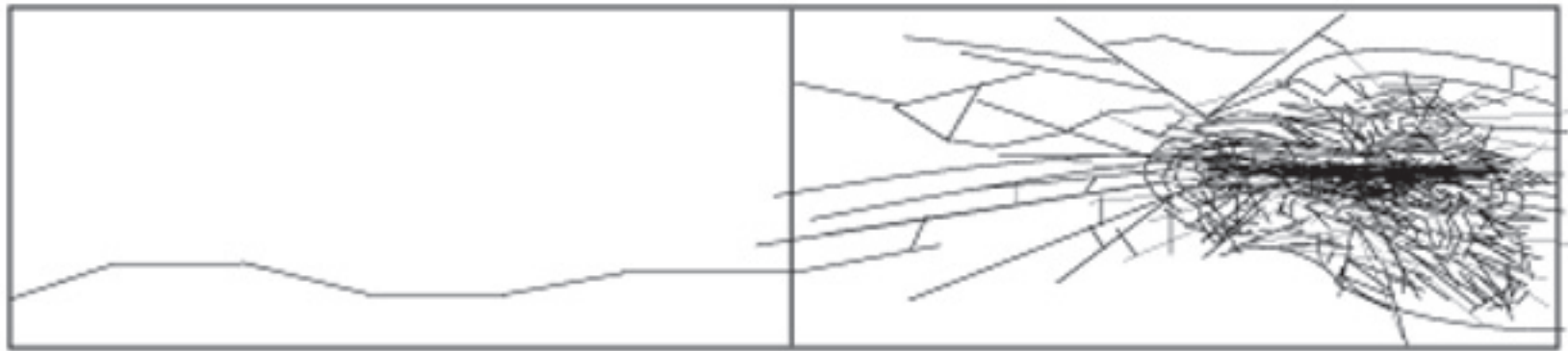
SAFETY **LOF** FLO-LITE

AS-1 C-

LAMINATED  
X A

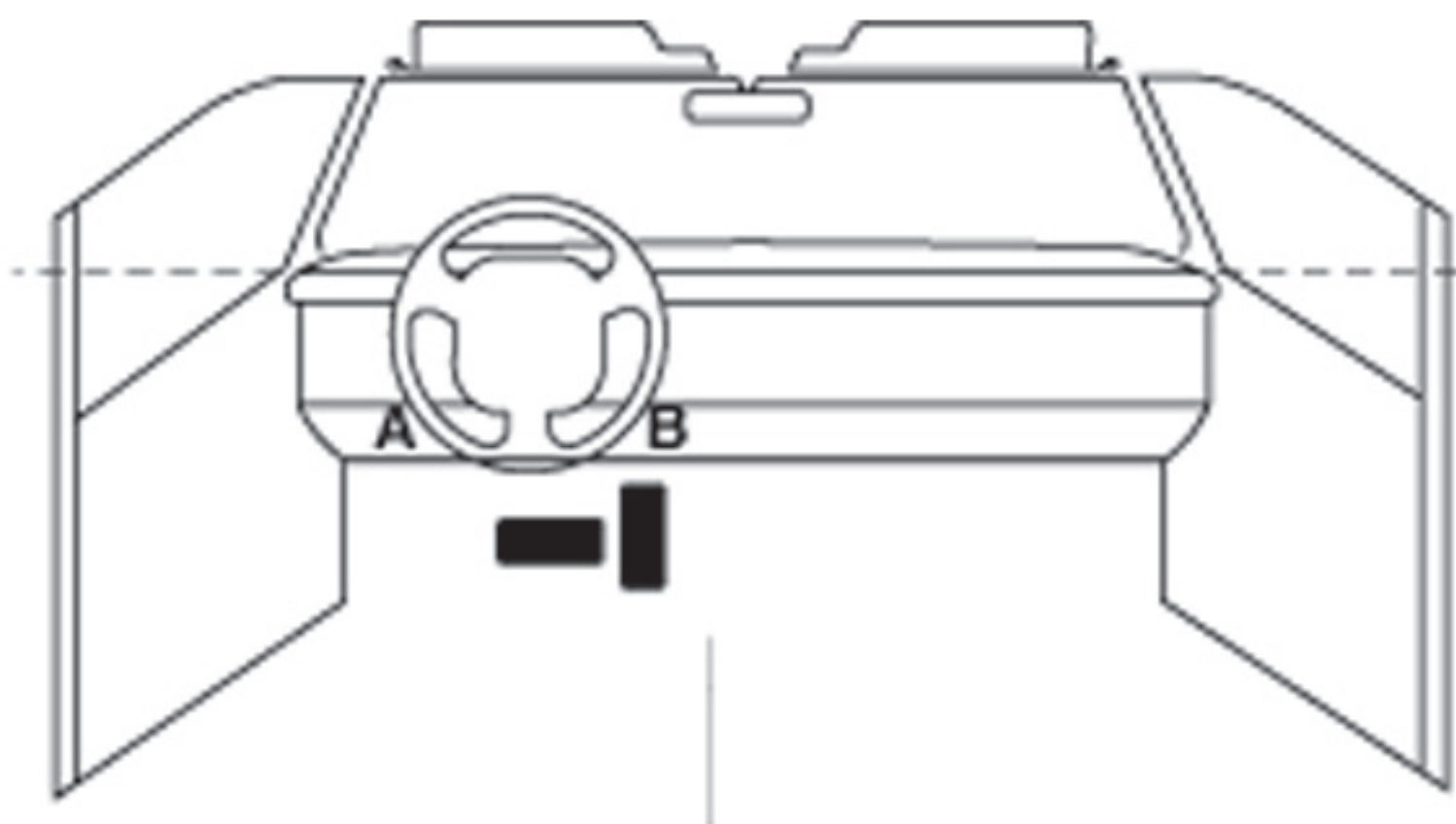
DOT15 M10

MADE IN CANADA



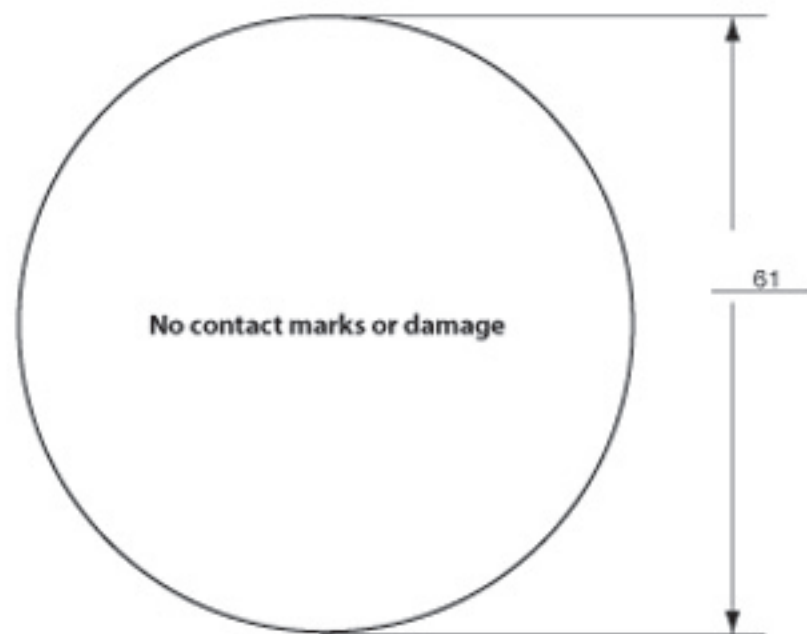




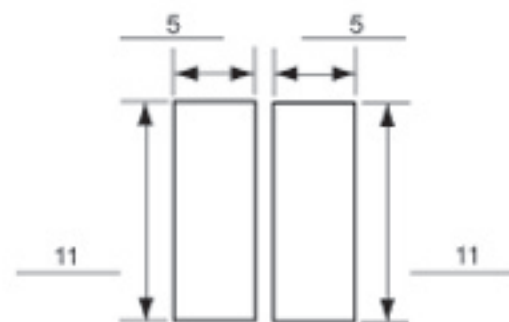


**A = Scuff mark**  
**B = Scuff mark**

### Driver Airbag



### Driver Airbag Doors



I-Pattern

Vents: Y  N  
if yes, how many: \_\_\_\_\_

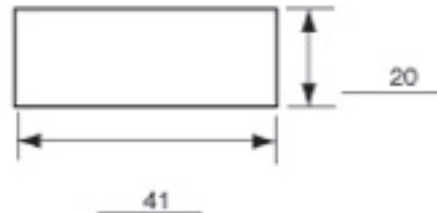
Tethers:  Y N  
if yes, how many: 4

### Passenger Airbag



### Passenger Airbag Door

Single Door



Vents:  Y  N

if yes, how many: 2

Vents at 3 and 9 O'clock

Tethers: Y  N

if yes, how many: \_\_\_\_\_

# Case # 370: Occupant # 1; Injury # 1

Variable Number and Name	Code Value	Code Description	Other Options
V2101 — Injury Number	01	Injury #1	<a href="#">more</a>
V2102 — 1st Prob Contact Area	34	Restraint system webbing	<a href="#">more</a>
V2103 — 2nd Prob Contact Area	00	No Contact/not applicable	<a href="#">more</a>
V2104 — Primary OIC -body Region	19	Shoulder	<a href="#">more</a>
V2105 — Primary OIC -aspect	12	Left	<a href="#">more</a>
V2106 — Primary OIC -lesion	03	Contusion	<a href="#">more</a>
V2107 — Primary OIC -system/Organ	09	Integumentary	<a href="#">more</a>
V2108 — Primary OIC -severity	1	Minor	<a href="#">more</a>
V2109 — Primary OIC	SLCI1	—	—
V2110 — Assoc OIC 1 -body Region	99	No injury	<a href="#">more</a>
V2111 — Assoc OIC 1 -aspect	99	No injury	<a href="#">more</a>
V2112 — Assoc OIC 1 -lesion	99	No injury	<a href="#">more</a>
V2113 — Assoc OIC 1 -system/Organ	99	No injury	<a href="#">more</a>
V2114 — Assoc OIC 1 -severity	9	Unknown	<a href="#">more</a>
V2115 — Assoc OIC 1	—	—	—

## Case # 370: Occupant # 1; Injury # 2

<b>Variable Number and Name</b>	<b>Code Value</b>	<b>Code Description</b>	<b>Other Options</b>
V2101 — Injury Number	02	Injury #2	<a href="#">more</a>
V2102 — 1st Prob Contact Area	34	Restraint system webbing	<a href="#">more</a>
V2103 — 2nd Prob Contact Area	00	No Contact/not applicable	<a href="#">more</a>
V2104 — Primary OIC -body Region	13	Abdomen	<a href="#">more</a>
V2105 — Primary OIC -aspect	23	Whole region	<a href="#">more</a>
V2106 — Primary OIC -lesion	03	Contusion	<a href="#">more</a>
V2107 — Primary OIC -system/Organ	09	Integumentary	<a href="#">more</a>
V2108 — Primary OIC -severity	1	Minor	<a href="#">more</a>
V2109 — Primary OIC	MWCI1	—	—
V2110 — Assoc OIC 1 -body Region	99	No injury	<a href="#">more</a>
V2111 — Assoc OIC 1 -aspect	99	No injury	<a href="#">more</a>
V2112 — Assoc OIC 1 -lesion	99	No injury	<a href="#">more</a>
V2113 — Assoc OIC 1 -system/Organ	99	No injury	<a href="#">more</a>
V2114 — Assoc OIC 1 -severity	9	Unknown	<a href="#">more</a>
V2115 — Assoc OIC 1	—	—	—

# Case # 370: Occupant # 1; Injury # 3

Variable Number and Name	Code Value	Code Description	Other Options
V2101 — Injury Number	03	Injury #3	<a href="#">more</a>
V2102 — 1st Prob Contact Area	34	Restraint system webbing	<a href="#">more</a>
V2103 — 2nd Prob Contact Area	87	Air cushion skin "airbag"	<a href="#">more</a>
V2104 — Primary OIC -body Region	13	Abdomen	<a href="#">more</a>
V2105 — Primary OIC -aspect	21	Unknown	<a href="#">more</a>
V2106 — Primary OIC -lesion	18	Rupture	<a href="#">more</a>
V2107 — Primary OIC -system/Organ	13	Muscles	<a href="#">more</a>
V2108 — Primary OIC -severity	1	Minor	<a href="#">more</a>
V2109 — Primary OIC	MURM1	—	—
V2110 — Assoc OIC 1 -body Region	99	No injury	<a href="#">more</a>
V2111 — Assoc OIC 1 -aspect	99	No injury	<a href="#">more</a>
V2112 — Assoc OIC 1 -lesion	99	No injury	<a href="#">more</a>
V2113 — Assoc OIC 1 -system/Organ	99	No injury	<a href="#">more</a>
V2114 — Assoc OIC 1 -severity	9	Unknown	<a href="#">more</a>
V2115 — Assoc OIC 1	—	—	—

# Case # 370: Occupant # 1

<b>Variable Number and Name</b>	<b>Code Value</b>	<b>Code Description</b>	<b>Other Options</b>
V2001 — Occupant Number	01	Occupant #1	<a href="#">more</a>
V2002 — Occupant Role At 1st Impact	1	Motor vehicle driver	<a href="#">more</a>
V2003 — Occupant Position -row	1	1st row	<a href="#">more</a>
V2004 — Occupant Position -lateral	1	Left	<a href="#">more</a>
V2005 — Occupant Position -posture	10	Sitting on seat	<a href="#">more</a>
V2006 — Occupant Age In Years	23	—	—
V2007 — Occupant Age In Months	25	25 months or older	<a href="#">more</a>
V2008 — Occupant Mass	073 kg	—	—
V2009 — Occupant Height	157 cm	—	—
V2010 — Occupant Sex	2	Female	<a href="#">more</a>
V2011 — Occupant Treatment/Mortality	03	Hospitalized for observation less than 24 hours	<a href="#">more</a>
V2012 — Injury Severity Score	02	ISS 2	<a href="#">more</a>
V2013 — Non-impact Med Condition	4	Pregnant	<a href="#">more</a>
V2014 — Police Injury Severity	1	C - Possible injury	<a href="#">more</a>
V2015 — Active Restraint System	3	Both lap belt and shoulder harness	<a href="#">more</a>
V2016 — Active Restraint Usage	3	Both lap belt and shoulder harness	<a href="#">more</a>
V2017 — Passive Restraint System	1	Air bag installed	<a href="#">more</a>
V2018 — Passive Restraint Usage	2	Air bag deployed	<a href="#">more</a>
V2019 — Child Seat Type	88	Not applicable (adult or older child)	<a href="#">more</a>
V2020 — Occupant Ejection Degree	0	None	<a href="#">more</a>
V2021 — Occupant Ejection Area	98	Not applicable (not ejected)	<a href="#">more</a>

V2022 — Highest OIC Severity	1	Minor	<a href="#">more</a>
V2023 — Head Restraint Available	1	Equipped	<a href="#">more</a>
V2024 — Occupant Eyewear	2	Contacts	<a href="#">more</a>
V2025 — Source of Occupant Info	4	Other	<a href="#">more</a>













STOP



















ERCEL























MICHIGAN  
1YK 186  
APR 2005



























ANTI-LOCK BRAKE SYSTEM



























