



US 20220164896A1

(19) **United States**

(12) **Patent Application Publication**
Konrardy et al.

(10) **Pub. No.: US 2022/0164896 A1**

(43) **Pub. Date: May 26, 2022**

(54) **FULLY AUTONOMOUS VEHICLE
INSURANCE PRICING**

(71) Applicant: **STATE FARM MUTUAL
AUTOMOBILE INSURANCE
COMPANY**, Bloomington, IL (US)

(72) Inventors: **Blake Konrardy**, Bloomington, IL
(US); **Scott T. Christensen**, Gibson
City, IL (US); **Gregory Hayward**,
Bloomington, IL (US); **Scott Farris**,
Bloomington, IL (US)

(73) Assignee: **STATE FARM MUTUAL
AUTOMOBILE INSURANCE
COMPANY**, BLOOMINGTON, IL
(US)

(21) Appl. No.: **17/670,871**

(22) Filed: **Feb. 14, 2022**

provisional application No. 62/035,769, filed on Aug. 11, 2014, provisional application No. 62/035,729, filed on Aug. 11, 2014, provisional application No. 62/035,723, filed on Aug. 11, 2014, provisional application No. 62/035,669, filed on Aug. 11, 2014, provisional application No. 62/035,660, filed on Aug. 11, 2014, provisional application No. 62/036,090, filed on Aug. 11, 2014, provisional application No. 62/035,983, filed on Aug. 11, 2014, provisional application No. 62/018,169, filed on Jun. 27, 2014, provisional application No. 62/000,878, filed on May 20, 2014.

Publication Classification

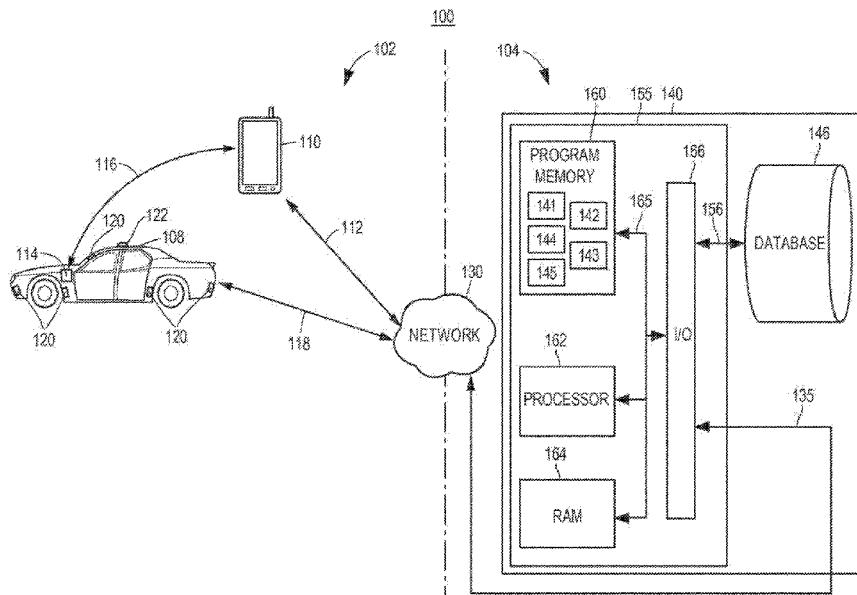
(51) **Int. Cl.**
G06Q 40/08 (2006.01)
G06Q 40/00 (2006.01)
(52) **U.S. Cl.**
CPC **G06Q 40/08** (2013.01); **G06Q 40/00**
(2013.01)

Related U.S. Application Data

- (63) Continuation of application No. 16/431,991, filed on Jun. 5, 2019, now Pat. No. 11,282,143, which is a continuation of application No. 14/951,774, filed on Nov. 25, 2015, now Pat. No. 10,373,259, which is a continuation-in-part of application No. 14/713,271, filed on May 15, 2015, now Pat. No. 10,089,693.
- (60) Provisional application No. 62/056,893, filed on Sep. 29, 2014, provisional application No. 62/047,307, filed on Sep. 8, 2014, provisional application No. 62/035,980, filed on Aug. 11, 2014, provisional application No. 62/035,878, filed on Aug. 11, 2014, provisional application No. 62/035,867, filed on Aug. 11, 2014, provisional application No. 62/035,859, filed on Aug. 11, 2014, provisional application No. 62/035,832, filed on Aug. 11, 2014, provisional application No. 62/035,780, filed on Aug. 11, 2014,

(57) ABSTRACT

Methods and systems for determining risk associated with operation of fully autonomous vehicles are provided. According to certain aspects, autonomous operation features associated with a vehicle may be determined, including types and version of sensors, control systems, and software. This information may be used to determine a risk profile reflecting risk levels for a plurality of features, which may be based upon test data regarding the features or actual loss data. Expected use levels may further be determined and used with the risk profile to determine a total risk level associated with operation of the vehicle by the autonomous operation features. The expected use levels may indicate expected vehicle use, as well as traffic, weather, or other conditions in which the vehicle is likely to operate. The total risk level may be used to determine or adjust aspects of an insurance policy associated with the vehicle.



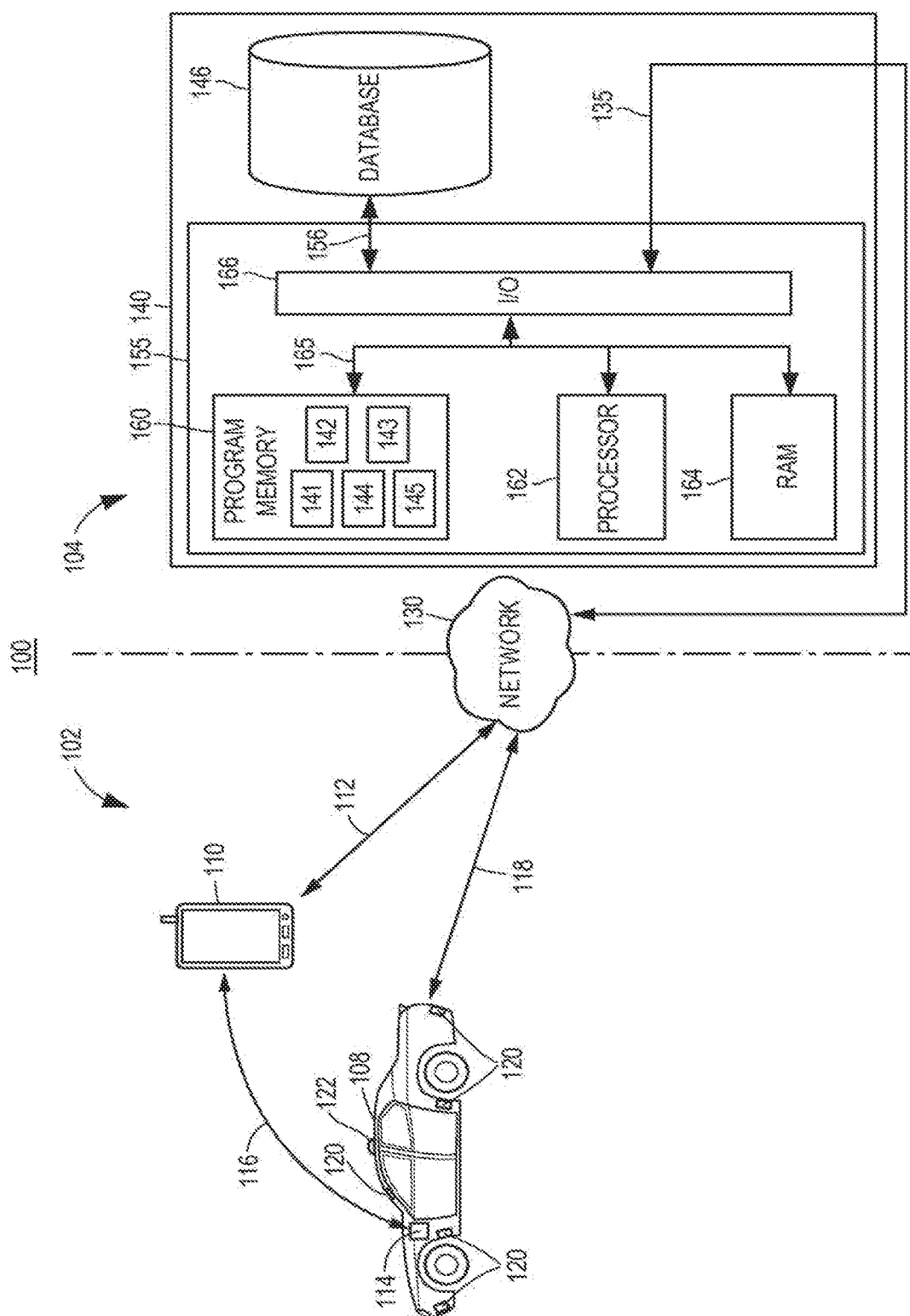


FIG. 1

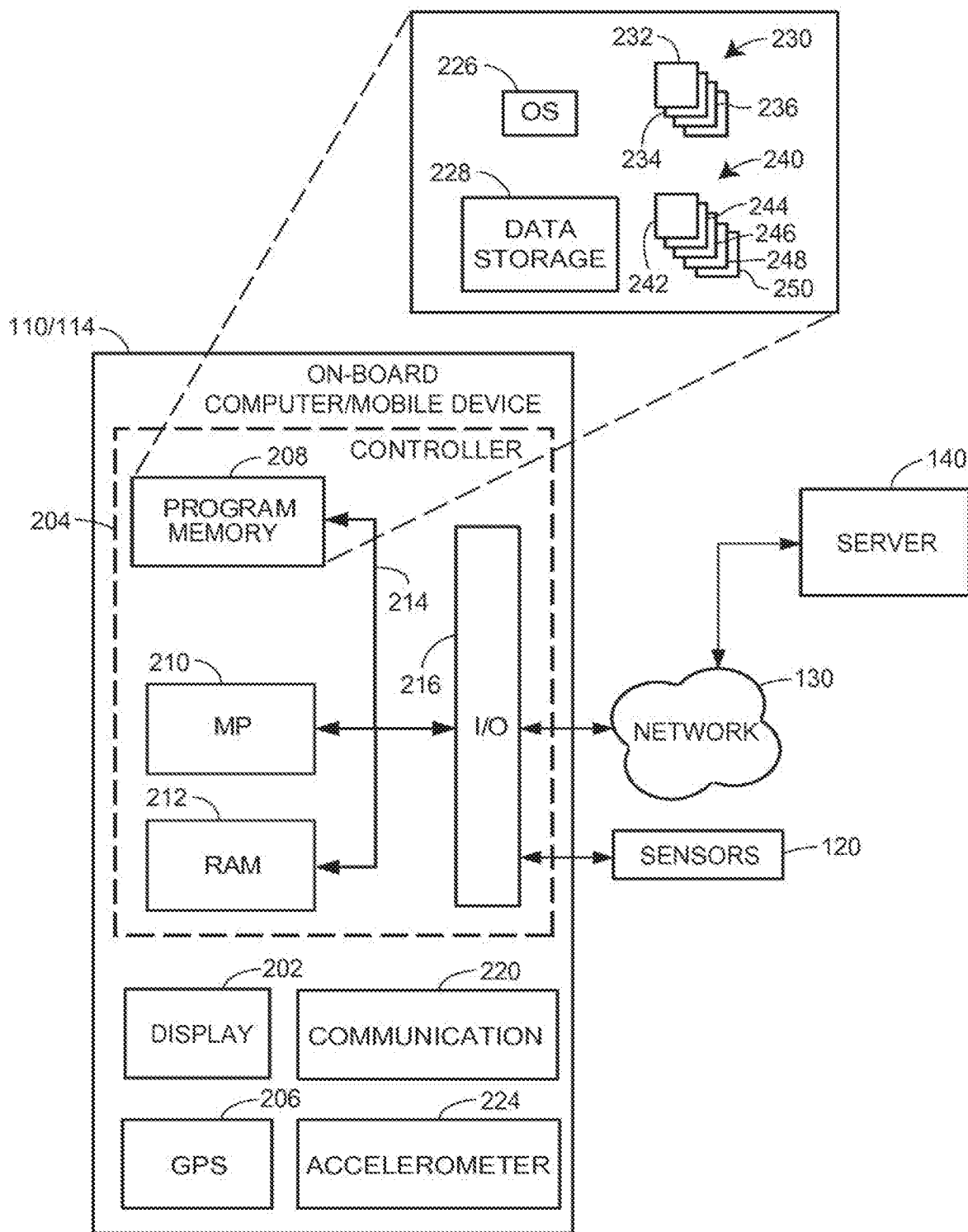
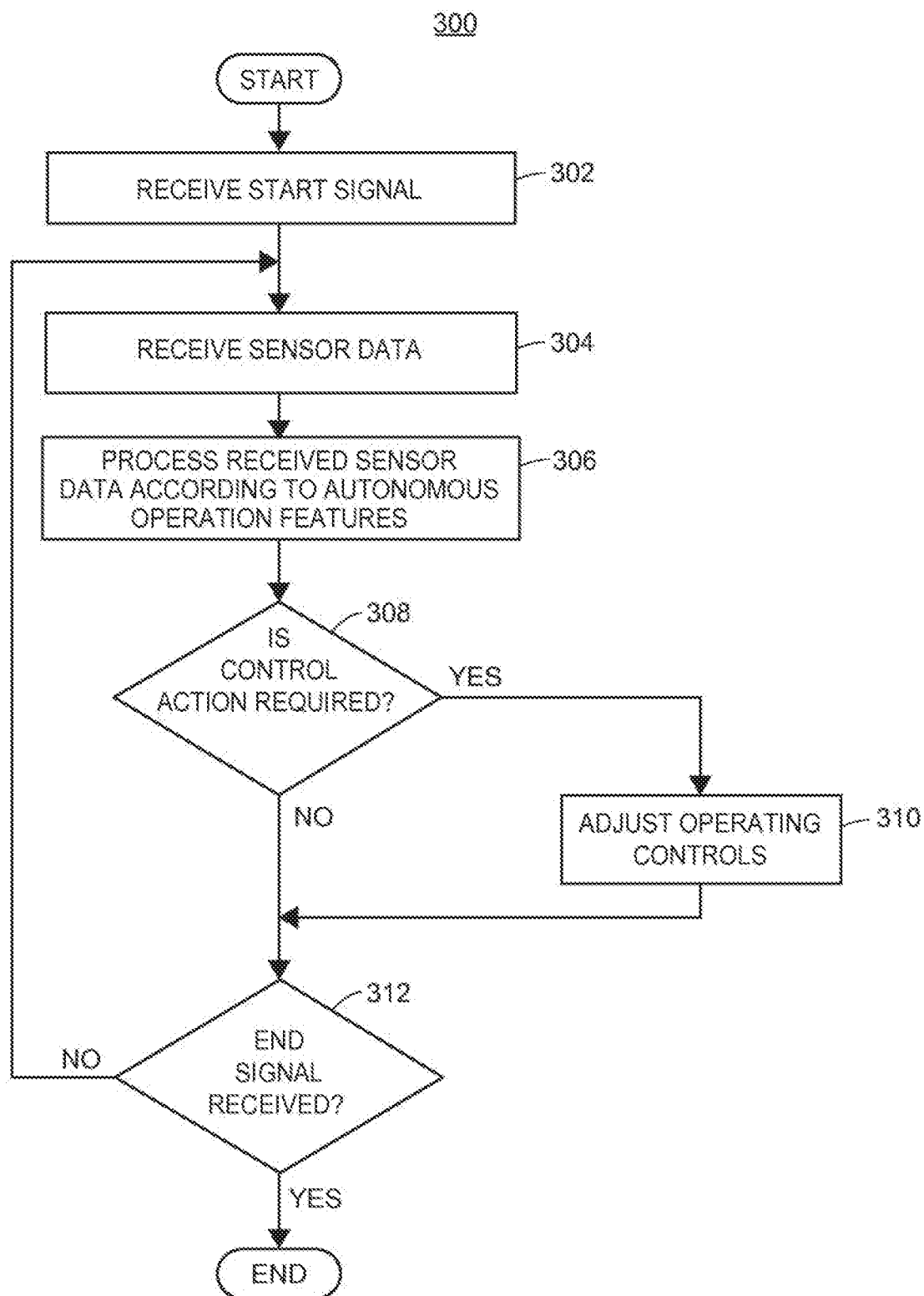


FIG. 2

**FIG. 3**

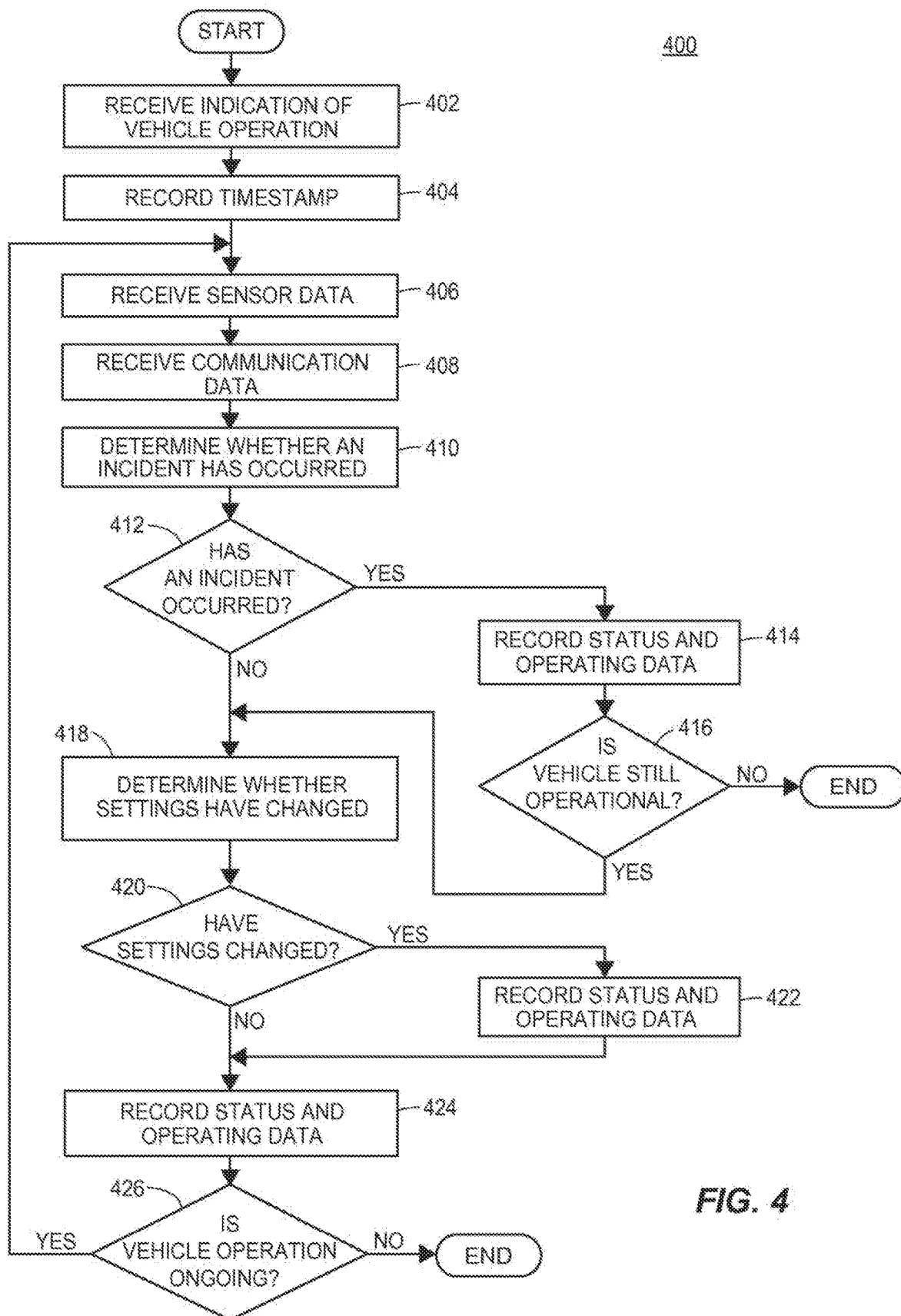
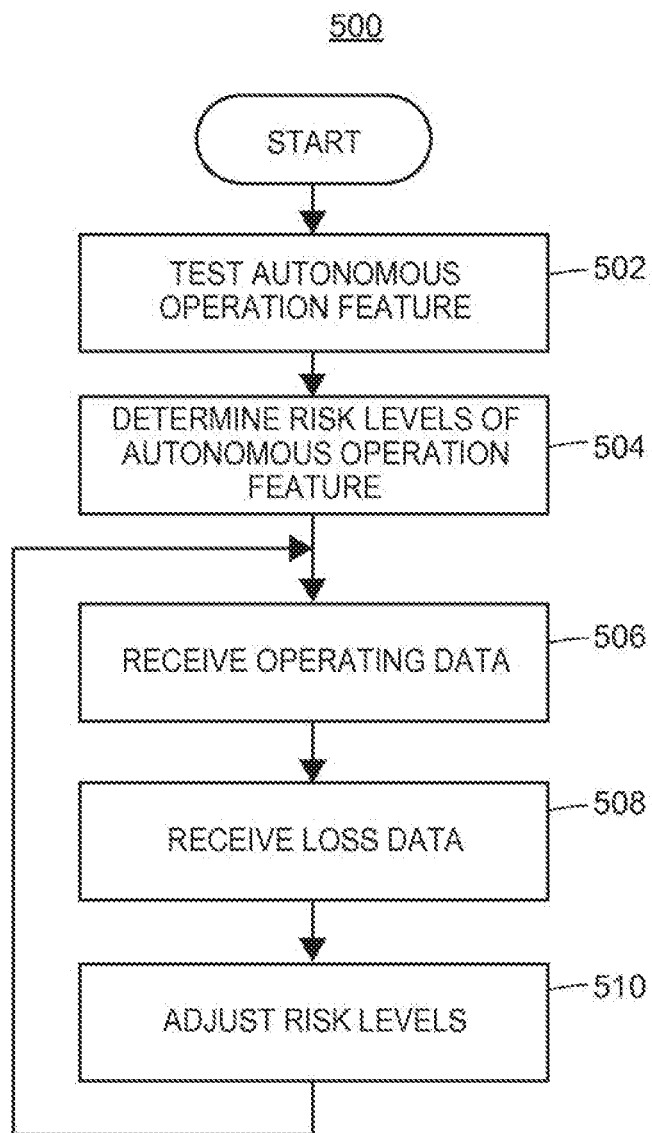
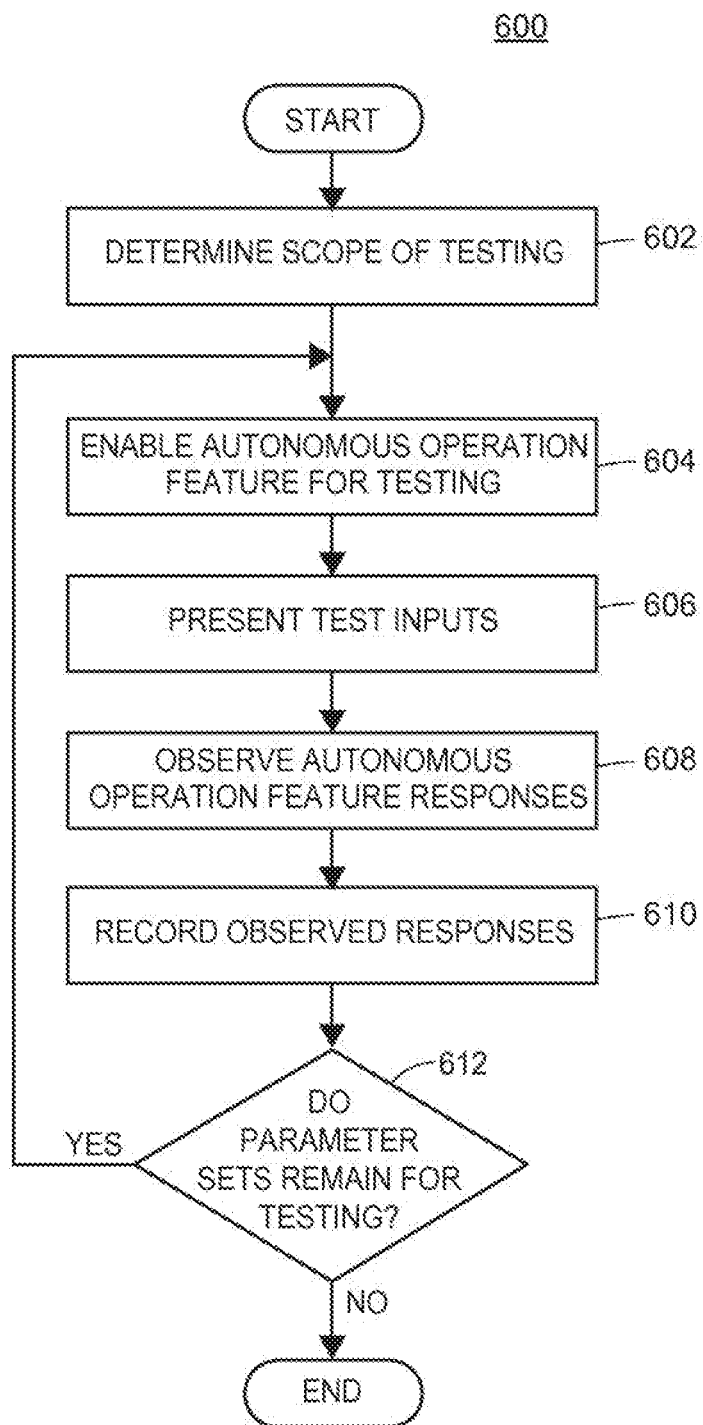
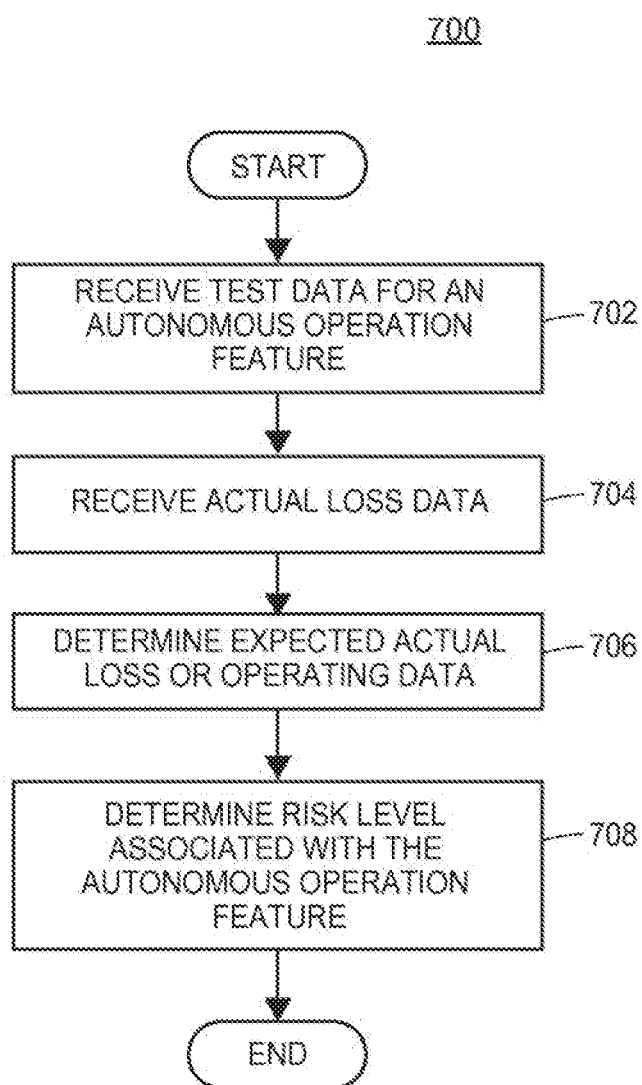
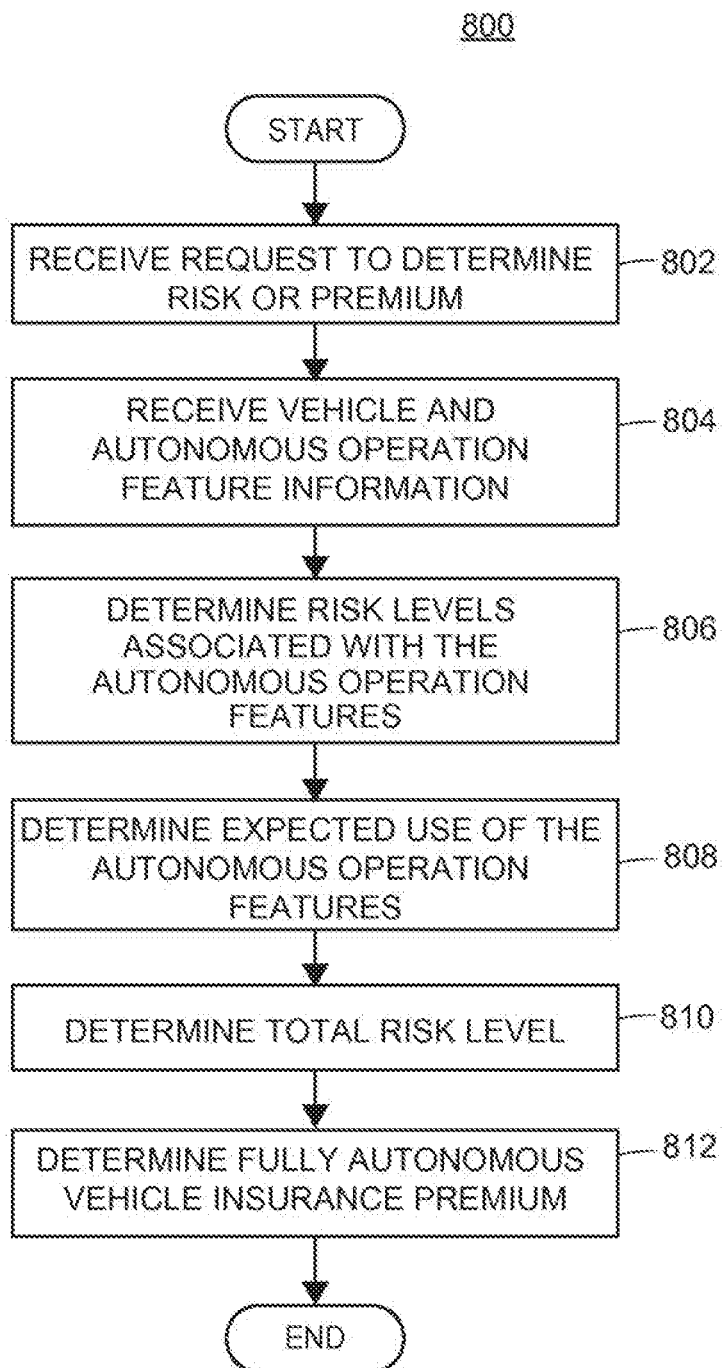


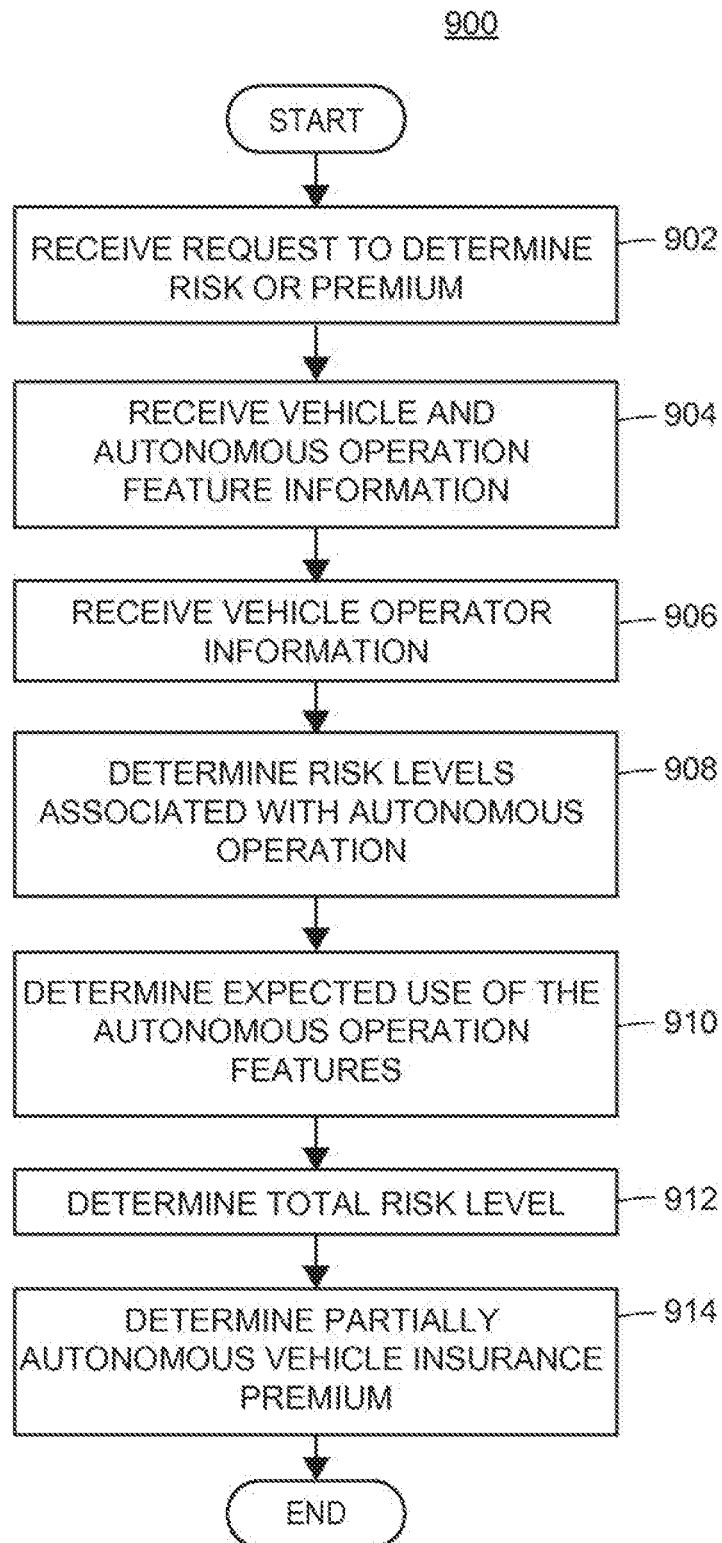
FIG. 4

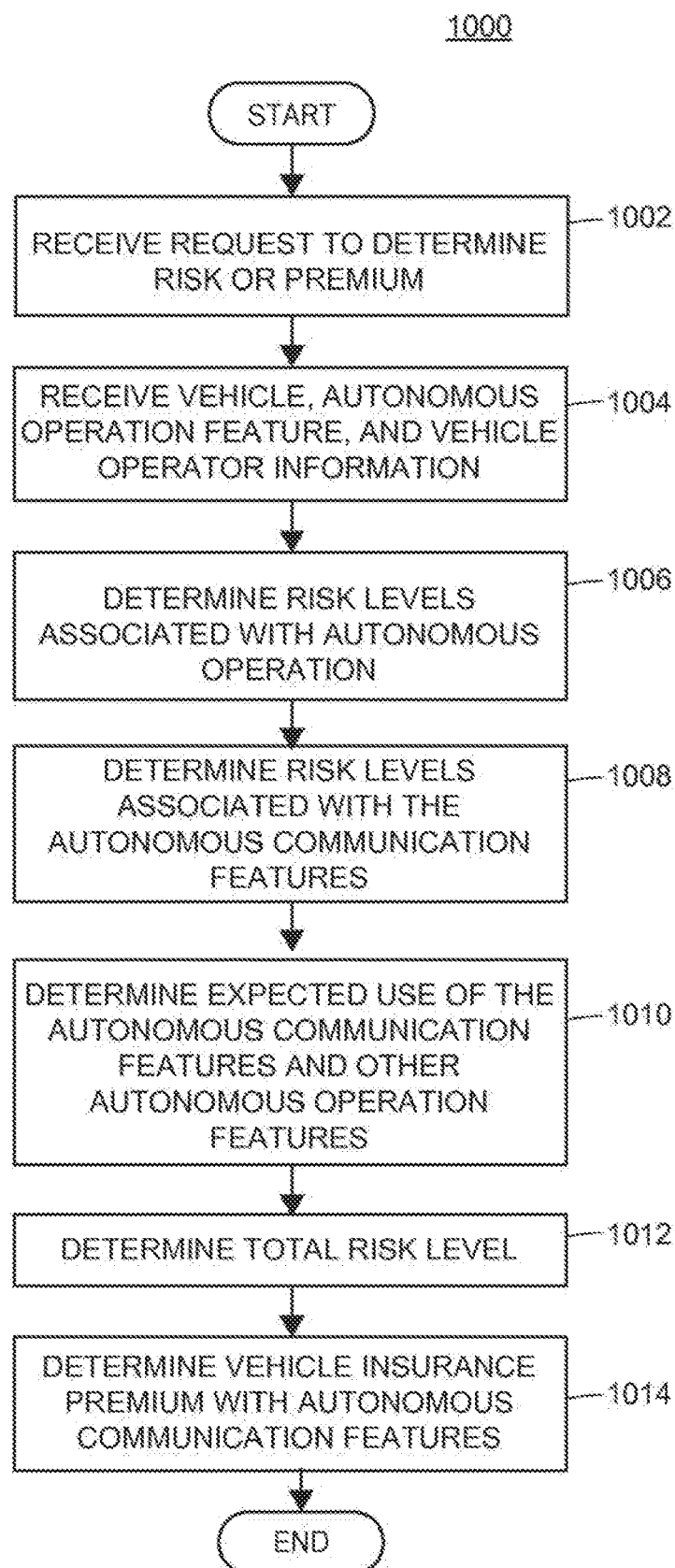
**FIG. 5**

**FIG. 6**

**FIG. 7**

**FIG. 8**

**FIG. 9**

**FIG. 10**

FULLY AUTONOMOUS VEHICLE INSURANCE PRICING

CROSS-REFERENCE TO RELATED APPLICATIONS

[0001] This application is a continuation of, and claims the benefit of, U.S. patent application Ser. No. 14/951,774, filed Nov. 25, 2015 and entitled “Fully Autonomous Vehicle Insurance Pricing,” which is a continuation-in-part application of U.S. patent application Ser. No. 14/713,271, filed May 15, 2015 (now U.S. Pat. No. 10,089,693), which claims the benefit of U.S. Provisional Application No. 62/000,878 (filed May 20, 2014); U.S. Provisional Application No. 62/018,169 (filed Jun. 27, 2014); U.S. Provisional Application No. 62/035,660 (filed Aug. 11, 2014); U.S. Provisional Application No. 62/035,669 (filed Aug. 11, 2014); U.S. Provisional Application No. 62/035,723 (filed Aug. 11, 2014); U.S. Provisional Application No. 62/035,729 (filed Aug. 11, 2014); U.S. Provisional Application No. 62/035,769 (filed Aug. 11, 2014); U.S. Provisional Application No. 62/035,780 (filed Aug. 11, 2014); U.S. Provisional Application No. 62/035,832 (filed Aug. 11, 2014); U.S. Provisional Application No. 62/035,859 (filed Aug. 11, 2014); U.S. Provisional Application No. 62/035,867 (filed Aug. 11, 2014); U.S. Provisional Application No. 62/035,878 (filed Aug. 11, 2014); U.S. Provisional Application No. 62/035,980 (filed Aug. 11, 2014); U.S. Provisional Application No. 62/035,983 (filed Aug. 11, 2014); U.S. Provisional Application No. 62/036,090 (filed Aug. 11, 2014); U.S. Provisional Application No. 62/047,307 (filed Sep. 8, 2014); and U.S. Provisional Application No. 62/056,893 (filed Sep. 29, 2014). The entirety of each of the foregoing provisional applications is incorporated by reference herein.

[0002] Additionally, the present application is related to U.S. patent application Ser. No. 14/951,271 (filed May 15, 2015); U.S. patent application Ser. No. 14/713,184 (filed May 15, 2015); U.S. patent application Ser. No. 14/713,188 (filed May 15, 2015); U.S. patent application Ser. No. 14/978,266 (filed Dec. 22, 2015); U.S. patent application Ser. No. 14/713,194 (filed May 15, 2015); U.S. patent application Ser. No. 14/713,201 (filed May 15, 2015); U.S. patent application Ser. No. 14/713,206 (filed May 15, 2015); U.S. patent application Ser. No. 14/713,214 (filed May 15, 2015); U.S. patent application Ser. No. 14/713,217 (filed May 15, 2015); U.S. patent application Ser. No. 14/713,223 (filed May 15, 2015); U.S. patent application Ser. No. 14/713,226 (filed May 15, 2015); U.S. patent application Ser. No. 14/713,230 (filed May 15, 2015); U.S. patent application Ser. No. 14/713,237 (filed May 15, 2015); U.S. patent application Ser. No. 14/713,240 (filed May 15, 2015); U.S. patent application Ser. No. 14/713,244 (filed May 15, 2015); U.S. patent application Ser. No. 14/713,249 (filed May 15, 2015); U.S. patent application Ser. No. 14/713,254 (filed May 15, 2015); U.S. patent application Ser. No. 14/951,803 (filed Nov. 25, 2015); U.S. patent application Ser. No. 14/713,261 (filed May 15, 2015); U.S. patent application Ser. No. 14/951,798 (filed Nov. 25, 2015); and U.S. patent application Ser. No. 14/713,266 (filed May 15, 2015).

FIELD

[0003] The present disclosure generally relates to systems and methods for determining risk, pricing, and offering

vehicle insurance policies, specifically vehicle insurance policies where vehicle operation is fully automated.

BACKGROUND

[0004] Vehicle or automobile insurance exists to provide financial protection against physical damage and/or bodily injury resulting from traffic accidents and against liability that could arise therefrom. Typically, a customer purchases a vehicle insurance policy for a policy rate having a specified term. In exchange for payments from the insured customer, the insurer pays for damages to the insured which are caused by covered perils, acts, or events as specified by the language of the insurance policy. The payments from the insured are generally referred to as “premiums,” and typically are paid on behalf of the insured over time at periodic intervals. An insurance policy may remain “in-force” while premium payments are made during the term or length of coverage of the policy as indicated in the policy. An insurance policy may “lapse” (or have a status or state of “lapsed”), for example, when premium payments are not being paid or if the insured or the insurer cancels the policy.

[0005] Premiums may be typically determined based upon a selected level of insurance coverage, location of vehicle operation, vehicle model, and characteristics or demographics of the vehicle operator. The characteristics of a vehicle operator that affect premiums may include age, years operating vehicles of the same class, prior incidents involving vehicle operation, and losses reported by the vehicle operator to the insurer or a previous insurer. Past and current premium determination methods do not, however, account for use of autonomous vehicle operating features. The present embodiments may, inter alia, alleviate this and/or other drawbacks associated with conventional techniques.

BRIEF SUMMARY

[0006] The present embodiments may be related to autonomous or semi-autonomous vehicle functionality, including driverless operation or accident avoidance. These autonomous vehicle operation features may take full control of vehicle operation under some or all circumstances. The present embodiments may also facilitate risk assessment and premium determination for vehicle insurance policies covering vehicles with autonomous operation features.

[0007] In accordance with the described embodiments, the disclosure herein generally addresses systems and methods for determining risk and pricing insurance for a vehicle having one or more autonomous operation features for controlling the vehicle. A server may receive information regarding autonomous operation features of a vehicle, determine risks associated with the autonomous operation features, determine expected usage of the autonomous operation features, and/or determine the total risk associated with autonomous operation of the vehicle. The total risk level may be used to determine a premium for an insurance policy associated with the vehicle, which may be determined by reference to a risk category.

[0008] In one aspect, a computer-implemented method for determining risk and pricing insurance for a vehicle having one or more autonomous operation features for controlling the vehicle may be provided. The computer-implemented method may include receiving information regarding the one or more autonomous operation features of the vehicle, determining a risk profile associated with autonomous

operation of the vehicle based upon, at least in part wholly or partially), the information regarding the one or more autonomous operation features, determining a plurality of expected use levels of the vehicle, and/or determining a total risk level associated with autonomous operation of the vehicle based upon, at least in part (i.e., wholly or partially), the risk profile and the expected use levels. The risk profile may include a plurality of risk levels associated with autonomous operation of the vehicle under a plurality of operating conditions, and the expected use levels may be associated with the plurality of operating conditions. The method may include additional, fewer, or alternate actions, including those discussed elsewhere herein.

[0009] In another aspect, a computer system for determining risk and pricing insurance for a vehicle having one or more autonomous operation features for controlling the vehicle may be provided. The computer system may include one or more processors, one or more communication modules adapted to communicate data, and a program memory coupled to the one or more processors and storing executable instructions. The executable instruction may, when executed by the one or more processors, cause the computer system to receive information regarding the one or more autonomous operation features of the vehicle, determine a risk profile associated with autonomous operation of the vehicle based upon the information regarding the one or more autonomous operation features, determine a plurality of expected use levels of the vehicle, and/or determine a total risk level associated with autonomous operation of the vehicle based upon the risk profile and/or the expected use levels. The risk profile may include a plurality of risk levels associated with autonomous operation of the vehicle under a plurality of operating conditions, and the expected use levels may be associated with the plurality of operating conditions. The system may include additional, fewer, or alternate actions, including those discussed elsewhere herein.

[0010] In yet another aspect, a tangible, non-transitory computer-readable medium storing instructions for determining risk and pricing insurance for a vehicle having one or more autonomous operation features for controlling the vehicle may be provided. The instructions may, when executed by at least one processor of a computer system, cause the computer system to receive information regarding the one or more autonomous operation features of the vehicle, determine a risk profile associated with autonomous operation of the vehicle based upon the information regarding the one or more autonomous operation features, determine a plurality of expected use levels of the vehicle, and/or determine a total risk level associated with autonomous operation of the vehicle based upon the risk profile and the expected use levels. The risk profile may include a plurality of risk levels associated with autonomous operation of the vehicle under a plurality of operating conditions, and the expected use levels may be associated with the plurality of operating conditions. The method may include additional, fewer, or alternate actions, including those discussed elsewhere herein.

[0011] In some methods or systems, the total risk level may be determined without reference to factors relating to risks associated with a vehicle operator. In such methods or system, the total risk level may be based solely on the information regarding the autonomous operation features or may include information regarding the vehicle. In either

case, factors relating to the risks associated with the vehicle operator (such as age, experience, or past operating history of the vehicle operator) may be excluded from the determination of the total risk level.

[0012] In some further methods or systems, the information regarding the one or more autonomous operation features may include information or be based upon test results corresponding to the one or more autonomous operation features. The information regarding the one or more autonomous operation features of the vehicle may include test results for test units corresponding to the one or more autonomous operation features, wherein the test results may include responses of the test units to test inputs corresponding to test scenarios and may be generated by the test units disposed within one or more test vehicles in response to sensor data from a plurality of sensors within the one or more test vehicles. The information regarding the one or more autonomous operation features of the vehicle may further be based upon (i) test results for test units corresponding to the one or more autonomous operation features, which test results may include responses of the test units to test inputs corresponding to test scenarios, and/or (ii) actual losses associated with insurance policies covering a plurality of other vehicles having at least one of the one or more autonomous operation features.

[0013] The expected use levels associated with the plurality of operating conditions also may include information regarding expected operation of the vehicle with autonomous operation features enabled and expected operation of the vehicle with autonomous operation features disabled. Some methods or systems may receive information regarding previous use of the one or more autonomous operation features of the vehicle, and the plurality of expected use levels may be determined, at least in part, based upon the information regarding previous use of the one or more autonomous operation features. In some methods or systems, the information regarding previous use of the one or more autonomous operation features may include one or more of the following: times, road conditions, weather conditions, or autonomous operation feature settings associated with the previous use of the autonomous operation features.

[0014] In still further methods or systems, the expected use levels may include one or more of (i) expected autonomous operation levels of the vehicle, (ii) expected operation of the vehicle by a vehicle operator (such as where the vehicle operator may disable the autonomous operation features), and/or (iii) expected settings associated with the one or more autonomous operation features. In additional or alternative methods or systems, receiving information regarding the one or more autonomous operation features of the vehicle may include receiving information regarding the vehicle, determining types of the one or more autonomous operation features, and/or determining types of one or more sensors installed in the vehicle based upon the information regarding the vehicle, such that the plurality of risk levels associated with autonomous operation of the vehicle may be determined, at least in part, based upon the sensors installed in the vehicle.

[0015] In yet further methods or systems, the methods or systems may receive a request for a quote of a premium associated with a vehicle insurance policy, determine a premium associated with a vehicle insurance policy based upon the total risk level, and/or present an option to purchase

the vehicle insurance policy to a customer associated with the vehicle. In still further methods or systems, the information regarding the one or more autonomous operation features may include one or more of the following: a type and version of the autonomous operation feature, an operation of the autonomous operation feature, a type and version of autonomous operation feature control software, and/or settings of the autonomous operation feature.

BRIEF DESCRIPTION OF THE DRAWINGS

[0016] Advantages will become more apparent to those skilled in the art from the following description of the preferred embodiments which have been shown and described by way of illustration. As will be realized, the present embodiments may be capable of other and different embodiments, and their details are capable of modification in various respects. Accordingly, the drawings and description are to be regarded as illustrative in nature and not as restrictive.

[0017] The figures described below depict various aspects of the applications, methods, and systems disclosed herein. It should be understood that each figure depicts an embodiment of a particular aspect of the disclosed applications, systems and methods, and that each of the figures is intended to accord with a possible embodiment thereof. Furthermore, wherever possible, the following description refers to the reference numerals included in the following figures, in which features depicted in multiple figures are designated with consistent reference numerals.

[0018] FIG. 1 illustrates a block diagram of an exemplary computer network, a computer server, a mobile device, and an on-board computer for implementing autonomous vehicle operation, monitoring, evaluation, and insurance processes in accordance with the described embodiments;

[0019] FIG. 2 illustrates a block diagram of an exemplary on-board computer or mobile device;

[0020] FIG. 3 illustrates a flow diagram of an exemplary autonomous vehicle operation method in accordance with the presently described embodiments;

[0021] FIG. 4 illustrates a flow diagram of an exemplary autonomous vehicle operation monitoring method in accordance with the presently described embodiments;

[0022] FIG. 5 illustrates a flow diagram of an exemplary autonomous operation feature evaluation method for determining the effectiveness of autonomous operation features in accordance with the presently described embodiments;

[0023] FIG. 6 illustrates a flow diagram of an exemplary autonomous operation feature testing method for presenting test conditions to an autonomous operation feature and observing and recording responses to the test conditions in accordance with the presently described embodiments;

[0024] FIG. 7 illustrates a flow diagram of an exemplary autonomous feature evaluation method for determining the effectiveness of an autonomous operation feature under a set of environmental conditions, configuration conditions, and settings in accordance with the presently described embodiments;

[0025] FIG. 8 illustrates a flow diagram depicting an exemplary embodiment of a fully autonomous vehicle insurance pricing method in accordance with the presently described embodiments;

[0026] FIG. 9 illustrates a flow diagram depicting an exemplary embodiment of a partially autonomous vehicle insurance pricing method in accordance with the presently described embodiments; and

[0027] FIG. 10 illustrates a flow diagram depicting an exemplary embodiment of an autonomous vehicle insurance pricing method for determining risk and premiums for vehicle insurance policies covering autonomous vehicles with autonomous communication features in accordance with the presently described embodiments.

DETAILED DESCRIPTION

[0028] The systems and methods disclosed herein generally relate to evaluating, monitoring, pricing, and processing vehicle insurance policies for vehicles including autonomous (or semi-autonomous) vehicle operation features. The autonomous operation features may take full control of the vehicle under certain conditions, viz. fully autonomous operation, or the autonomous operation features may assist the vehicle operator in operating the vehicle, viz. partially autonomous operation. Fully autonomous operation features may include systems within the vehicle that pilot the vehicle to a destination with or without a vehicle operator present (e.g., an operating system for a driverless car). Partially autonomous operation features may assist the vehicle operator in limited ways (e.g., automatic braking or collision avoidance systems). The autonomous operation features may affect the risk related to operating a vehicle, both individually and/or in combination. To account for these effects on risk, some embodiments evaluate the quality of each autonomous operation feature and/or combination of features. This may be accomplished by testing the features and combinations in controlled environments, as well as analyzing the effectiveness of the features in the ordinary course of vehicle operation. New autonomous operation features may be evaluated based upon controlled testing and/or estimating ordinary-course performance based upon data regarding other similar features for which ordinary-course performance is known.

[0029] Some autonomous operation features may be adapted for use under particular conditions, such as city driving or highway driving. Additionally, the vehicle operator may be able to configure settings relating to the features or may enable or disable the features at will. Therefore, some embodiments monitor use of the autonomous operation features, which may include the settings or levels of feature use during vehicle operation. Information obtained by monitoring feature usage may be used to determine risk levels associated with vehicle operation, either generally or in relation to a vehicle operator. In such situations, total risk may be determined by a weighted combination of the risk levels associated with operation while autonomous operation features are enabled (with relevant settings) and the risk levels associated with operation while autonomous operation features are disabled. For fully autonomous vehicles, settings or configurations relating to vehicle operation may be monitored and used in determining vehicle operating risk.

[0030] Information regarding the risks associated with vehicle operation with and without the autonomous operation features may then be used to determine risk categories or premiums for a vehicle insurance policy covering a vehicle with autonomous operation features. Risk category or price may be determined based upon factors relating to the evaluated effectiveness of the autonomous vehicle fea-

tures. The risk or price determination may also include traditional factors, such as location, vehicle type, and level of vehicle use. For fully autonomous vehicles, factors relating to vehicle operators may be excluded entirely. For partially autonomous vehicles, factors relating to vehicle operators may be reduced in proportion to the evaluated effectiveness and monitored usage levels of the autonomous operation features. For vehicles with autonomous communication features that obtain information from external sources (e.g., other vehicles or infrastructure), the risk level and/or price determination may also include an assessment of the availability of external sources of information. Location and/or timing of vehicle use may thus be monitored and/or weighted to determine the risk associated with operation of the vehicle.

Autonomous Automobile Insurance

[0031] The present embodiments may relate to assessing and pricing insurance based upon autonomous (or semi-autonomous) functionality of a vehicle, and not the human driver. A smart vehicle may maneuver itself without human intervention and/or include sensors, processors, computer instructions, and/or other components that may perform or direct certain actions conventionally performed by a human driver.

[0032] An analysis of how artificial intelligence facilitates avoiding accidents and/or mitigates the severity of accidents may be used to build a database and/or model of risk assessment. After which, automobile insurance risk and/or premiums (as well as insurance discounts, rewards, and/or points) may be adjusted based upon autonomous or semi-autonomous vehicle functionality, such as by groups of autonomous or semi-autonomous functionality or individual features. In one aspect, an evaluation may be performed of how artificial intelligence, and the usage thereof, impacts automobile accidents and/or automobile insurance claims.

[0033] The types of autonomous or semi-autonomous vehicle-related functionality or technology that may be used with the present embodiments to replace human driver actions may include and/or be related to the following types of functionality: (a) fully autonomous (driverless); (b) limited driver control; (c) vehicle-to-vehicle (V2V) wireless communication; (d) vehicle-to-infrastructure (and/or vice versa) wireless communication; (e) automatic or semi-automatic steering; (f) automatic or semi-automatic acceleration; (g) automatic or semi-automatic braking; (h) automatic or semi-automatic blind spot monitoring; (i) automatic or semi-automatic collision warning; (j) adaptive cruise control; (k) automatic or semi-automatic parking/parking assistance; (l) automatic or semi-automatic collision preparation (windows roll up, seat adjusts upright, brakes pre-charge, etc.); (m) driver acuity/alertness monitoring; (n) pedestrian detection; (o) autonomous or semi-autonomous backup systems; (p) road mapping systems; (q) software security and anti-hacking measures; (r) theft prevention/automatic return; (s) automatic or semi-automatic driving without occupants; and/or other functionality.

[0034] The adjustments to automobile insurance rates or premiums based upon the autonomous or semi-autonomous vehicle-related functionality or technology may take into account the impact of such functionality or technology on the likelihood of a vehicle accident or collision occurring. For instance, a processor may analyze historical accident information and/or test data involving vehicles having

autonomous or semi-autonomous functionality. Factors that may be analyzed and/or accounted for that are related to insurance risk, accident information, or test data may include (1) point of impact; (2) type of road; (3) time of day; (4) weather conditions; (5) road construction; (6) type/length of trip; (7) vehicle style; (8) level of pedestrian traffic; (9) level of vehicle congestion; (10) atypical situations (such as manual traffic signaling); (11) availability of internet connection for the vehicle; and/or other factors. These types of factors may also be weighted according to historical accident information, predicted accidents, vehicle trends, test data, and/or other considerations.

[0035] In one aspect, the benefit of one or more autonomous or semi-autonomous functionalities or capabilities may be determined, weighted, and/or otherwise characterized. For instance, the benefit of certain autonomous or semi-autonomous functionality may be substantially greater in city or congested traffic, as compared to open road or country driving traffic. Additionally or alternatively, certain autonomous or semi-autonomous functionality may only work effectively below a certain speed, i.e., during city driving or driving in congestion. Other autonomous or semi-autonomous functionality may operate more effectively on the highway and away from city traffic, such as cruise control. Further individual autonomous or semi-autonomous functionality may be impacted by weather, such as rain or snow, and/or time of day (day light versus night). As an example, fully automatic or semi-automatic lane detection warnings may be impacted by rain, snow, ice, and/or the amount of sunlight (all of which may impact the imaging or visibility of lane markings painted onto a road surface, and/or road markers or street signs).

[0036] Automobile insurance premiums, rates, discounts, rewards, refunds, points, etc. may be adjusted based upon the percentage of time or vehicle usage that the vehicle is the driver, i.e., the amount of time a specific driver uses each type of autonomous (or even semi-autonomous) vehicle functionality. In other words, insurance premiums, discounts, rewards, etc. may be adjusted based upon the percentage of vehicle usage during which the autonomous or semi-autonomous functionality is in use. For example, automobile insurance risk, premiums, discounts, etc. for an automobile having one or more autonomous or semi-autonomous functionalities may be adjusted and/or set based upon the percentage of vehicle usage that the one or more individual autonomous or semi-autonomous vehicle functionalities are in use, anticipated to be used or employed by the driver, and/or otherwise operating.

[0037] Such usage information for a particular vehicle may be gathered over time and/or via remote wireless communication with the vehicle. One embodiment may involve a processor on the vehicle, such as within a vehicle control system or dashboard, monitoring in real-time whether vehicle autonomous or semi-autonomous functionality is currently operating. Other types of monitoring may be remotely performed, such as via wireless communication between the vehicle and a remote server, or wireless communication between a vehicle-mounted dedicated device (that is configured to gather autonomous or semi-autonomous functionality usage information) and a remote server.

[0038] In one embodiment, if the vehicle is currently employing autonomous or semi-autonomous functionality, the vehicle may send a Vehicle-to-Vehicle (V2V) wireless

communication to a nearby vehicle also employing the same or other type(s) of autonomous or semi-autonomous functionality.

[0039] As an example, the V2V wireless communication from the first vehicle to the second vehicle (following the first vehicle) may indicate that the first vehicle is autonomously braking, and the degree to which the vehicle is automatically braking and/or slowing down. In response, the second vehicle may also automatically or autonomously brake as well, and the degree of automatically braking or slowing down of the second vehicle may be determined to match, or even exceed, that of the first vehicle. As a result, the second vehicle, traveling directly or indirectly, behind the first vehicle, may autonomously safely break in response to the first vehicle autonomously breaking.

[0040] As another example, the V2V wireless communication from the first vehicle to the second vehicle may indicate that the first vehicle is beginning or about to change lanes or turn. In response, the second vehicle may autonomously take appropriate action, such as automatically slow down, change lanes, turn, maneuver, etc. to avoid the first vehicle.

[0041] As noted above, the present embodiments may include remotely monitoring, in real-time and/or via wireless communication, vehicle autonomous or semi-autonomous functionality. From such remote monitoring, the present embodiments may remotely determine that a vehicle accident has occurred. As a result, emergency responders may be informed of the location of the vehicle accident, such as via wireless communication, and/or quickly dispatched to the accident scene.

[0042] The present embodiments may also include remotely monitoring, in real-time or via wireless communication, that vehicle autonomous or semi-autonomous functionality is, or is not, in use, and/or collect information regarding the amount of usage of the autonomous or semi-autonomous functionality. From such remote monitoring, a remote server may remotely send a wireless communication to the vehicle to prompt the human driver to engage one or more specific vehicle autonomous or semi-autonomous functionalities.

[0043] Another embodiment may enable a vehicle to wirelessly communicate with a traffic light, railroad crossing, toll both, marker, sign, or other equipment along the side of a road or highway. As an example, a traffic light may wirelessly indicate to the vehicle that the traffic light is about to switch from green to yellow, or from yellow to red. In response to such an indication remotely received from the traffic light, the autonomous or semi-autonomous vehicle may automatically start to brake, and/or present or issue a warning/alert to the human driver. After which, the vehicle may wirelessly communicate with the vehicles traveling behind it that the traffic light is about to change and/or that the vehicle has started to brake or slow down such that the following vehicles may also automatically brake or slow down accordingly.

[0044] Insurance premiums, rates, ratings, discounts, rewards, special offers, points, programs, refunds, claims, claim amounts, etc. may be adjusted for, or may otherwise take into account, the foregoing functionality and/or the other functionality described herein. For instance, insurance policies may be updated based upon autonomous or semi-autonomous vehicle functionality; V2V wireless communication-based autonomous or semi-autonomous vehicle func-

tionality; and/or vehicle-to-infrastructure or infrastructure-to-vehicle wireless communication-based autonomous or semi-autonomous vehicle functionality.

Exemplary Embodiments

[0045] Insurance providers may currently develop a set of rating factors based upon the make, model, and model year of a vehicle. Models with better loss experience receive lower factors, and thus lower rates. One reason that this current rating system cannot be used to assess risk for autonomous technology is that many autonomous features vary for the same model. For example, two vehicles of the same model may have different hardware features for automatic braking, different computer instructions for automatic steering, and/or different artificial intelligence system versions. The current make and model rating may also not account for the extent to which another “driver,” in this case the vehicle itself, is controlling the vehicle.

[0046] The present embodiments may assess and price insurance risks at least in part based upon autonomous or semi-autonomous vehicle technology that replaces actions of the driver. In a way, the vehicle-related computer instructions and artificial intelligence may be viewed as a “driver.”

[0047] In one computer-implemented method of adjusting or generating an insurance policy, (1) data may be captured by a processor (such as via wireless communication) to determine the autonomous or semi-autonomous technology or functionality associated with a specific vehicle that is, or is to be, covered by insurance; (2) the received data may be compared by the processor to a stored baseline of vehicle data (such as actual accident information, and/or autonomous or semi-autonomous vehicle testing data); (3) risk may be identified or assessed by the processor based upon the specific vehicle’s ability to make driving decisions and/or avoid or mitigate crashes; (4) an insurance policy may be adjusted (or generated or created), or an insurance premium may be determined by the processor based upon the risk identified that is associated with the specific vehicle’s autonomous or semi-autonomous ability or abilities; and/or (5) the insurance policy and/or premium may be presented on a display or otherwise provided to the policyholder or potential customer for their review and/or approval. The method may include additional, fewer, or alternate actions, including those discussed below and elsewhere herein.

[0048] The method may include evaluating the effectiveness of artificial intelligence and/or vehicle technology in a test environment, and/or using real driving experience. The identification or assessment of risk performed by the method (and/or the processor) may be dependent upon the extent of control and decision making that is assumed by the vehicle, rather than the driver.

[0049] Additionally or alternatively, the identification or assessment of insurance and/or accident-based risk may be dependent upon the ability of the vehicle to use external information (such as vehicle-to-vehicle and vehicle-to-infrastructure communication) to make driving decisions. The risk assessment may further be dependent upon the availability of such external information. For instance, a vehicle (or vehicle owner) may be associated with a geographical location, such as a large city or urban area, where such external information is readily available via wireless communication. On the other hand, a small town or rural area may or may not have such external information available.

[0050] The information regarding the availability of autonomous or semi-autonomous vehicle technology, such as a particular factory-installed hardware and/or software package, version, revision, or update, may be wirelessly transmitted to a remote server for analysis. The remote server may be associated with an insurance provider, vehicle manufacturer, autonomous technology provider, and/or other entity.

[0051] The driving experience and/or usage of the autonomous or semi-autonomous vehicle technology may be monitored in real time, small timeframes, and/or periodically to provide feedback to the driver, insurance provider, and/or adjust insurance policies or premiums. In one embodiment, information may be wirelessly transmitted to the insurance provider, such as from a transceiver associated with a smart car to an insurance provider remote server.

[0052] Insurance policies, including insurance premiums, discounts, and rewards, may be updated, adjusted, and/or determined based upon hardware or software functionality, and/or hardware or software upgrades. Insurance policies, including insurance premiums, discounts, etc. may also be updated, adjusted, and/or determined based upon the amount of usage and/or the type(s) of the autonomous or semi-autonomous technology employed by the vehicle.

[0053] In one embodiment, performance of autonomous driving software and/or sophistication of artificial intelligence may be analyzed for each vehicle. An automobile insurance premium may be determined by evaluating how effectively the vehicle may be able to avoid and/or mitigate crashes and/or the extent to which the driver's control of the vehicle is enhanced or replaced by the vehicle's software and artificial intelligence.

[0054] When pricing a vehicle with autonomous driving technology, artificial intelligence capabilities, rather than human decision making, may be evaluated to determine the relative risk of the insurance policy. This evaluation may be conducted using multiple techniques. Vehicle technology may be assessed in a test environment, in which the ability of the artificial intelligence to detect and avoid potential crashes may be demonstrated experimentally. For example, this may include a vehicle's ability to detect a slow-moving vehicle ahead and/or automatically apply the brakes to prevent a collision.

[0055] Additionally, actual loss experience of the software in question may be analyzed. Vehicles with superior artificial intelligence and crash avoidance capabilities may experience lower insurance losses in real driving situations.

[0056] Results from both the test environment and/or actual insurance losses may be compared to the results of other autonomous software packages and/or vehicles lacking autonomous driving technology to determine a relative risk factor (or level of risk) for the technology in question. This risk factor (or level of risk) may be applicable to other vehicles that utilize the same or similar autonomous operation software package(s).

[0057] Emerging technology, such as new iterations of artificial intelligence systems, may be priced by combining its individual test environment assessment with actual losses corresponding to vehicles with similar autonomous operation software packages. The entire vehicle software and artificial intelligence evaluation process may be conducted with respect to various technologies and/or elements that affect driving experience. For example, a fully autonomous vehicle may be evaluated based upon its vehicle-to-vehicle

communications. A risk factor could then be determined and applied when pricing the vehicle. The driver's past loss experience and/or other driver risk characteristics may not be considered for fully autonomous vehicles, in which all driving decisions are made by the vehicle's artificial intelligence.

[0058] In one embodiment, a separate portion of the automobile insurance premium may be based explicitly on the artificial intelligence software's driving performance and characteristics. The artificial intelligence pricing model may be combined with traditional methods for semi-autonomous vehicles. Insurance pricing for fully autonomous, or driverless, vehicles may be based upon the artificial intelligence model score by excluding traditional rating factors that measure risk presented by the drivers. Evaluation of vehicle software and/or artificial intelligence may be conducted on an aggregate basis or for specific combinations of technology and/or driving factors or elements (as discussed elsewhere herein). The vehicle software test results may be combined with actual loss experience to determine relative risk.

Exemplary Autonomous Vehicle Operation System

[0059] FIG. 1 illustrates a block diagram of an exemplary autonomous vehicle insurance system 100 on which the exemplary methods described herein may be implemented. The high-level architecture includes both hardware and software applications, as well as various data communications channels for communicating data between the various hardware and software components. The autonomous vehicle insurance system 100 may be roughly divided into front-end components 102 and back-end components 104. The front-end components 102 may obtain information regarding a vehicle 108 (e.g., a car, truck, motorcycle, etc.) and the surrounding environment. An on-board computer 114 may utilize this information to operate the vehicle 108 according to an autonomous operation feature or to assist the vehicle operator in operating the vehicle 108. To monitor the vehicle 108, the front-end components 102 may include one or more sensors 120 installed within the vehicle 108 that may communicate with the on-board computer 114. The front-end components 102 may further process the sensor data using the on-board computer 114 or a mobile device 110 (e.g., a smart phone, a tablet computer, a special purpose computing device, etc.) to determine when the vehicle is in operation and information regarding the vehicle. In some embodiments of the system 100, the front-end components 102 may communicate with the back-end components 104 via a network 130. Either the on-board computer 114 or the mobile device 110 may communicate with the back-end components 104 via the network 130 to allow the back-end components 104 to record information regarding vehicle usage. The back-end components 104 may use one or more servers 140 to receive data from the front-end components 102, determine use and effectiveness of autonomous operation features, determine risk levels or premium price, and/or facilitate purchase or renewal of an autonomous vehicle insurance policy.

[0060] The front-end components 102 may be disposed within or communicatively connected to one or more on-board computers 114, which may be permanently or removably installed in the vehicle 108. The on-board computer 114 may interface with the one or more sensors 120 within the vehicle 108 (e.g., an ignition sensor, an odometer, a system

clock, a speedometer, a tachometer, an accelerometer, a gyroscope, a compass, a geolocation unit, a camera, a distance sensor, etc.), which sensors may also be incorporated within or connected to the on-board computer 114. The front end components 102 may further include a communication component 122 to transmit information to and receive information from external sources, including other vehicles, infrastructure, or the back-end components 104. In some embodiments, the mobile device 110 may supplement the functions performed by the on-board computer 114 described herein by, for example, sending or receiving information to and from the mobile server 140 via the network 130. In other embodiments, the on-board computer 114 may perform all of the functions of the mobile device 110 described herein, in which case no mobile device 110 may be present in the system 100. Either or both of the mobile device 110 or on-board computer 114 may communicate with the network 130 over links 112 and 118, respectively. Additionally, the mobile device 110 and on-board computer 114 may communicate with one another directly over link 116.

[0061] The mobile device 110 may be either a general-use personal computer, cellular phone, smart phone, tablet computer, or a dedicated vehicle use monitoring device. Although only one mobile device 110 is illustrated, it should be understood that a plurality of mobile devices 110 may be used in some embodiments. The on-board computer 114 may be a general-use on-board computer capable of performing many functions relating to vehicle operation or a dedicated computer for autonomous vehicle operation. Further, the on-board computer 114 may be installed by the manufacturer of the vehicle 108 or as an aftermarket modification or addition to the vehicle 108. In some embodiments or under certain conditions, the mobile device 110 or on-board computer 114 may function as thin-client devices that outsource some or most of the processing to the server 140.

[0062] The sensors 120 may be removably or fixedly installed within the vehicle 108 and may be disposed in various arrangements to provide information to the autonomous operation features. Among the sensors 120 may be included one or more of a GPS unit, a radar unit, a LIDAR unit, an ultrasonic sensor, an infrared sensor, a camera, an accelerometer, a tachometer, or a speedometer. Some of the sensors 120 (e.g., radar, LIDAR, or camera units) may actively or passively scan the vehicle environment for obstacles (e.g., other vehicles, buildings, pedestrians, etc.), lane markings, or signs or signals. Other sensors 120 (e.g., GPS, accelerometer, or tachometer units) may provide data for determining the location or movement of the vehicle 108. Information generated or received by the sensors 120 may be communicated to the on-board computer 114 or the mobile device 110 for use in autonomous vehicle operation.

[0063] In some embodiments, the communication component 122 may receive information from external sources, such as other vehicles or infrastructure. The communication component 122 may also send information regarding the vehicle 108 to external sources. To send and receive information, the communication component 122 may include a transmitter and a receiver designed to operate according to predetermined specifications, such as the dedicated short-range communication (DSRC) channel, wireless telephony, Wi-Fi, or other existing or later-developed communications protocols. The received information may supplement the data received from the sensors 120 to implement the auto-

nous operation features. For example, the communication component 122 may receive information that an autonomous vehicle ahead of the vehicle 108 is reducing speed, allowing the adjustments in the autonomous operation of the vehicle 108.

[0064] In addition to receiving information from the sensors 120, the on-board computer 114 may directly or indirectly control the operation of the vehicle 108 according to various autonomous operation features. The autonomous operation features may include software applications or modules implemented by the on-board computer 114 to control the steering, braking, or throttle of the vehicle 108. To facilitate such control, the on-board computer 114 may be communicatively connected to the controls or components of the vehicle 108 by various electrical or electromechanical control components (not shown). In embodiments involving fully autonomous vehicles, the vehicle 108 may be operable only through such control components (not shown). In other embodiments, the control components may be disposed within or supplement other vehicle operator control components (not shown), such as steering wheels, accelerator or brake pedals, or ignition switches.

[0065] In some embodiments, the front-end components 102 communicate with the back-end components 104 via the network 130. The network 130 may be a proprietary network, a secure public internet, a virtual private network or some other type of network, such as dedicated access lines, plain ordinary telephone lines, satellite links, cellular data networks, combinations of these. Where the network 130 comprises the Internet, data communications may take place over the network 130 via an Internet communication protocol. The back-end components 104 include one or more servers 140. Each server 140 may include one or more computer processors adapted and configured to execute various software applications and components of the autonomous vehicle insurance system 100, in addition to other software applications. The server 140 may further include a database 146, which may be adapted to store data related to the operation of the vehicle 108 and its autonomous operation features. Such data might include, for example, dates and times of vehicle use, duration of vehicle use, use and settings of autonomous operation features, speed of the vehicle 108, RPM or other tachometer readings of the vehicle 108, lateral and longitudinal acceleration of the vehicle 108, incidents or near collisions of the vehicle 108, communication between the autonomous operation features and external sources, environmental conditions of vehicle operation (e.g., weather, traffic, road condition, etc.), errors or failures of autonomous operation features, or other data relating to use of the vehicle 108 and the autonomous operation features, which may be uploaded to the server 140 via the network 130. The server 140 may access data stored in the database 146 when executing various functions and tasks associated with the evaluating feature effectiveness or assessing risk relating to an autonomous vehicle.

[0066] Although the autonomous vehicle insurance system 100 is shown to include one vehicle 108, one mobile device 110, one on-board computer 114, and one server 140, it should be understood that different numbers of vehicles 108, mobile devices 110, on-board computers 114, and/or servers 140 may be utilized. For example, the system 100 may include a plurality of servers 140 and hundreds of mobile devices 110 or on-board computers 114, all of which may be interconnected via the network 130. Furthermore,

the database storage or processing performed by the one or more servers **140** may be distributed among a plurality of servers **140** in an arrangement known as “cloud computing.” This configuration may provide various advantages, such as enabling near real-time uploads and downloads of information as well as periodic uploads and downloads of information. This may in turn support a thin-client embodiment of the mobile device **110** or on-board computer **114** discussed herein.

[0067] The server **140** may have a controller **155** that is operatively connected to the database **146** via a link **156**. It should be noted that, while not shown, additional databases may be linked to the controller **155** in a known manner. For example, separate databases may be used for autonomous operation feature information, vehicle insurance policy information, and vehicle use information. The controller **155** may include a program memory **160**, a processor **162** (which may be called a microcontroller or a microprocessor), a random-access memory (RAM) **164**, and an input/output (I/O) circuit **166**, all of which may be interconnected via an address/data bus **165**. It should be appreciated that although only one microprocessor **162** is shown, the controller **155** may include multiple microprocessors **162**. Similarly, the memory of the controller **155** may include multiple RAMs **164** and multiple program memories **160**. Although the I/O circuit **166** is shown as a single block, it should be appreciated that the I/O circuit **166** may include a number of different types of I/O circuits. The RAM **164** and program memories **160** may be implemented as semiconductor memories, magnetically readable memories, or optically readable memories, for example. The controller **155** may also be operatively connected to the network **130** via a link **135**.

[0068] The server **140** may further include a number of software applications stored in a program memory **160**. The various software applications on the server **140** may include an autonomous operation information monitoring application **141** for receiving information regarding the vehicle **108** and its autonomous operation features, a feature evaluation application **142** for determining the effectiveness of autonomous operation features under various conditions, a compatibility evaluation application **143** for determining the effectiveness of combinations of autonomous operation features, a risk assessment application **144** for determining a risk category associated with an insurance policy covering an autonomous vehicle, and an autonomous vehicle insurance policy purchase application **145** for offering and facilitating purchase or renewal of an insurance policy covering an autonomous vehicle. The various software applications may be executed on the same computer processor or on different computer processors.

[0069] FIG. 2 illustrates a block diagram of an exemplary mobile device **110** or an exemplary on-board computer **114** consistent with the system **100**. The mobile device **110** or on-board computer **114** may include a display **202**, a GPS unit **206**, a communication unit **220**, an accelerometer **224**, one or more additional sensors (not shown), a user-input device (not shown), and/or, like the server **140**, a controller **204**. In some embodiments, the mobile device **110** and on-board computer **114** may be integrated into a single device, or either may perform the functions of both. The on-board computer **114** (or mobile device **110**) interfaces with the sensors **120** to receive information regarding the

vehicle **108** and its environment, which information is used by the autonomous operation features to operate the vehicle **108**.

[0070] Similar to the controller **155**, the controller **204** may include a program memory **208**, one or more microcontrollers or microprocessors (MP) **210**, a RAM **212**, and an I/O circuit **216**, all of which are interconnected via an address/data bus **214**. The program memory **208** includes an operating system **226**, a data storage **228**, a plurality of software applications **230**, and/or a plurality of software routines **240**. The operating system **226**, for example, may include one of a plurality of general purpose or mobile platforms, such as the Android™, iOS®, or Windows® systems, developed by Google Inc., Apple Inc., and Microsoft Corporation, respectively. Alternatively, the operating system **226** may be a custom operating system designed for autonomous vehicle operation using the on-board computer **114**. The data storage **228** may include data such as user profiles and preferences, application data for the plurality of applications **230**, routine data for the plurality of routines **240**, and other data related to the autonomous operation features. In some embodiments, the controller **204** may also include, or otherwise be communicatively connected to, other data storage mechanisms (e.g., one or more hard disk drives, optical storage drives, solid state storage devices, etc.) that reside within the vehicle **108**.

[0071] As discussed with reference to the controller **155**, it should be appreciated that although FIG. 2 depicts only one microprocessor **210**, the controller **204** may include multiple microprocessors **210**. Similarly, the memory of the controller **204** may include multiple RAMs **212** and multiple program memories **208**. Although FIG. 2 depicts the I/O circuit **216** as a single block, the I/O circuit **216** may include a number of different types of I/O circuits. The controller **204** may implement the RAMs **212** and the program memories **208** as semiconductor memories, magnetically readable memories, or optically readable memories, for example.

[0072] The one or more processors **210** may be adapted and configured to execute any of one or more of the plurality of software applications **230** or any one or more of the plurality of software routines **240** residing in the program memory **204**, in addition to other software applications. One of the plurality of applications **230** may be an autonomous vehicle operation application **232** that may be implemented as a series of machine-readable instructions for performing the various tasks associated with implementing one or more of the autonomous operation features according to the autonomous vehicle operation method **300**. Another of the plurality of applications **230** may be an autonomous communication application **234** that may be implemented as a series of machine-readable instructions for transmitting and receiving autonomous operation information to or from external sources via the communication module **220**. Still another application of the plurality of applications **230** may include an autonomous operation monitoring application **236** that may be implemented as a series of machine-readable instructions for sending information regarding autonomous operation of the vehicle to the server **140** via the network **130**.

[0073] The plurality of software applications **230** may call various of the plurality of software routines **240** to perform functions relating to autonomous vehicle operation, monitoring, or communication. One of the plurality of software routines **240** may be a configuration routine **242** to receive

settings from the vehicle operator to configure the operating parameters of an autonomous operation feature. Another of the plurality of software routines **240** may be a sensor control routine **244** to transmit instructions to a sensor **120** and receive data from the sensor **120**. Still another of the plurality of software routines **240** may be an autonomous control routine **246** that performs a type of autonomous control, such as collision avoidance, lane centering, or speed control. In some embodiments, the autonomous vehicle operation application **232** may cause a plurality of autonomous control routines **246** to determine control actions required for autonomous vehicle operation. Similarly, one of the plurality of software routines **240** may be a monitoring and reporting routine **248** that transmits information regarding autonomous vehicle operation to the server **140** via the network **130**. Yet another of the plurality of software routines **240** may be an autonomous communication routine **250** for receiving and transmitting information between the vehicle **108** and external sources to improve the effectiveness of the autonomous operation features. Any of the plurality of software applications **230** may be designed to operate independently of the software applications **230** or in conjunction with the software applications **230**.

[0074] When implementing the exemplary autonomous vehicle operation method **300**, the controller **204** of the on-board computer **114** may implement the autonomous vehicle operation application **232** to communicate with the sensors **120** to receive information regarding the vehicle **108** and its environment and process that information for autonomous operation of the vehicle **108**. In some embodiments including external source communication via the communication component **122** or the communication unit **220**, the controller **204** may further implement the autonomous communication application **234** to receive information for external sources, such as other autonomous vehicles, smart infrastructure (e.g., electronically communicating roadways, traffic signals, or parking structures), or other sources of relevant information (e.g., weather, traffic, local amenities). Some external sources of information may be connected to the controller **204** via the network **130**, such as the server **140** or internet-connected third-party databases (not shown). Although the autonomous vehicle operation application **232** and the autonomous communication application **234** are shown as two separate applications, it should be understood that the functions of the autonomous operation features may be combined or separated into any number of the software applications **230** or the software routines **240**.

[0075] When implementing the autonomous operation feature monitoring and evaluation methods **400-700**, the controller **204** may further implement the autonomous operation monitoring application **236** to communicate with the server **140** to provide information regarding autonomous vehicle operation. This may include information regarding settings or configurations of autonomous operation features, data from the sensors **120** regarding the vehicle environment, data from the sensors **120** regarding the response of the vehicle **108** to its environment, communications sent or received using the communication component **122** or the communication unit **220**, operating status of the autonomous vehicle operation application **232** and the autonomous communication application **234**, or commands sent from the on-board computer **114** to the control components (not shown) to operate the vehicle **108**. The information may be received and stored by the server **140** implementing the

autonomous operation information monitoring application **141**, and the server **140** may then determine the effectiveness of autonomous operation under various conditions by implementing the feature evaluation application **142** and the compatibility evaluation application **143**. The effectiveness of autonomous operation features and the extent of their use may be further used to determine risk associated with operation of the autonomous vehicle by the server **140** implementing the risk assessment application **144**.

[0076] In addition to connections to the sensors **120**, the mobile device **110** or the on-board computer **114** may include additional sensors, such as the GPS unit **206** or the accelerometer **224**, which may provide information regarding the vehicle **108** for autonomous operation and other purposes. Furthermore, the communication unit **220** may communicate with other autonomous vehicles, infrastructure, or other external sources of information to transmit and receive information relating to autonomous vehicle operation. The communication unit **220** may communicate with the external sources via the network **130** or via any suitable wireless communication protocol network, such as wireless telephony (e.g., GSM, CDMA, LTE, etc.), Wi-Fi (802.11 standards), WiMAX, Bluetooth, infrared or radio frequency communication, etc. Furthermore, the communication unit **220** may provide input signals to the controller **204** via the I/O circuit **216**. The communication unit **220** may also transmit sensor data, device status information, control signals, or other output from the controller **204** to one or more external sensors within the vehicle **108**, mobile devices **110**, on-board computers **114**, or servers **140**.

[0077] The mobile device **110** or the on-board computer **114** may include a user-input device (not shown) for receiving instructions or information from the vehicle operator, such as settings relating to an autonomous operation feature. The user-input device (not shown) may include a “soft” keyboard that is displayed on the display **202**, an external hardware keyboard communicating via a wired or a wireless connection (e.g., a Bluetooth keyboard), an external mouse, a microphone, or any other suitable user-input device. The user-input device (not shown) may also include a microphone capable of receiving user voice input.

Exemplary Autonomous Vehicle Operation Method

[0078] FIG. 3 illustrates a flow diagram of an exemplary autonomous vehicle operation method **300**, which may be implemented by the autonomous vehicle insurance system **100**. The method **300** may begin at block **302** when the controller **204** receives a start signal. The start signal may be a command from the vehicle operator through the user-input device to enable or engage one or more autonomous operation features of the vehicle **108**. In some embodiments, the vehicle operator **108** may further specify settings or configuration details for the autonomous operation features. For fully autonomous vehicles, the settings may relate to one or more destinations, route preferences, fuel efficiency preferences, speed preferences, or other configurable settings relating to the operation of the vehicle **108**. For other autonomous vehicles, the settings may include enabling or disabling particular autonomous operation features, specifying thresholds for autonomous operation, specifying warnings or other information to be presented to the vehicle operator, specifying autonomous communication types to send or receive, specifying conditions under which to enable or disable autonomous operation features, or specifying

other constraints on feature operation. For example, a vehicle operator may set the maximum speed for an adaptive cruise control feature with automatic lane centering. In some embodiments, the settings may further include a specification of whether the vehicle 108 should be operating as a fully or partially autonomous vehicle. In embodiments where only one autonomous operation feature is enabled, the start signal may consist of a request to perform a particular task (e.g., autonomous parking) or to enable a particular feature (e.g., autonomous braking for collision avoidance). In other embodiments, the start signal may be generated automatically by the controller 204 based upon predetermined settings (e.g., when the vehicle 108 exceeds a certain speed or is operating in low-light conditions). In some embodiments, the controller 204 may generate a start signal when communication from an external source is received (e.g., when the vehicle 108 is on a smart highway or near another autonomous vehicle).

[0079] After receiving the start signal at block 302, the controller 204 receives sensor data from the sensors 120 during vehicle operation at block 304. In some embodiments, the controller 204 may also receive information from external sources through the communication component 122 or the communication unit 220. The sensor data may be stored in the RAM 212 for use by the autonomous vehicle operation application 232. In some embodiments, the sensor data may be recorded in the data storage 228 or transmitted to the server 140 via the network 130. The sensor data may alternately either be received by the controller 204 as raw data measurements from one of the sensors 120 or may be preprocessed by the sensor 120 prior to being received by the controller 204. For example, a tachometer reading may be received as raw data or may be preprocessed to indicate vehicle movement or position. As another example, a sensor 120 comprising a radar or LIDAR unit may include a processor to preprocess the measured signals and send data representing detected objects in 3-dimensional space to the controller 204.

[0080] The autonomous vehicle operation application 232 or other applications 230 or routines 240 may cause the controller 204 to process the received sensor data at block 306 in accordance with the autonomous operation features. The controller 204 may process the sensor data to determine whether an autonomous control action is required or to determine adjustments to the controls of the vehicle 108. For example, the controller 204 may receive sensor data indicating a decreasing distance to a nearby object in the vehicle's path and process the received sensor data to determine whether to begin braking (and, if so, how abruptly to slow the vehicle 108). As another example, the controller 204 may process the sensor data to determine whether the vehicle 108 is remaining with its intended path (e.g., within lanes on a roadway). If the vehicle 108 is beginning to drift or slide (e.g., as on ice or water), the controller 204 may determine appropriate adjustments to the controls of the vehicle to maintain the desired bearing. If the vehicle 108 is moving within the desired path, the controller 204 may nonetheless determine whether adjustments are required to continue following the desired route (e.g., following a winding road). Under some conditions, the controller 204 may determine to maintain the controls based upon the sensor data (e.g., when holding a steady speed on a straight road).

[0081] When the controller 204 determines an autonomous control action is required at block 308, the controller 204 may cause the control components of the vehicle 108 to adjust the operating controls of the vehicle to achieve desired operation at block 310. For example, the controller 204 may send a signal to open or close the throttle of the vehicle 108 to achieve a desired speed. Alternatively, the controller 204 may control the steering of the vehicle 108 to adjust the direction of movement. In some embodiments, the vehicle 108 may transmit a message or indication of a change in velocity or position using the communication component 122 or the communication module 220, which signal may be used by other autonomous vehicles to adjust their controls. As discussed further below, the controller 204 may also log or transmit the autonomous control actions to the server 140 via the network 130 for analysis.

[0082] The controller 204 may continue to receive and process sensor data at blocks 304 and 306 until an end signal is received by the controller 204 at block 312. The end signal may be automatically generated by the controller 204 upon the occurrence of certain criteria (e.g., the destination is reached or environmental conditions require manual operation of the vehicle 108 by the vehicle operator). Alternatively, the vehicle operator may pause, terminate, or disable the autonomous operation feature or features using the user-input device or by manually operating the vehicle's controls, such as by depressing a pedal or turning a steering instrument. When the autonomous operation features are disabled or terminated, the controller 204 may either continue vehicle operation without the autonomous features or may shut off the vehicle 108, depending upon the circumstances.

[0083] Where control of the vehicle 108 must be returned to the vehicle operator, the controller 204 may alert the vehicle operator in advance of returning to manual operation. The alert may include a visual, audio, or other indication to obtain the attention of the vehicle operator. In some embodiments, the controller 204 may further determine whether the vehicle operator is capable of resuming manual operation before terminating autonomous operation. If the vehicle operator is determined not be capable of resuming operation, the controller 204 may cause the vehicle to stop or take other appropriate action.

Exemplary Monitoring Method

[0084] FIG. 4 is a flow diagram depicting an exemplary autonomous vehicle operation monitoring method 400, which may be implemented by the autonomous vehicle insurance system 100. The method 400 monitors the operation of the vehicle 108 and transmits information regarding the vehicle 108 to the server 140, which information may then be used to determine autonomous operation feature effectiveness or usage rates to assess risk and price vehicle insurance policy premiums. The method 400 may be used both for testing autonomous operation features in a controlled environment of for determining feature use by an insured party. In alternative embodiments, the method 400 may be implemented whenever the vehicle 108 is in operation (manual or autonomous) or only when the autonomous operation features are enabled. The method 400 may likewise be implemented as either a real-time process, in which information regarding the vehicle 108 is communicated to the server 140 while monitoring is ongoing, or as a periodic process, in which the information is stored within the vehicle

108 and communicated to the server **140** at intervals (e.g., upon completion of a trip or when an incident occurs). In some embodiments, the method **400** may communicate with the server **140** in real-time when certain conditions exist (e.g., when a sufficient data connection through the network **130** exists or when no roaming charges would be incurred).

[0085] The method **400** may begin at block **402** when the controller **204** receives an indication of vehicle operation. The indication may be generated when the vehicle **108** is started or when an autonomous operation feature is enabled by the controller **204** or by input from the vehicle operator. In response to receiving the indication, the controller **204** may create a timestamp at block **404**. The timestamp may include information regarding the date, time, location, vehicle environment, vehicle condition, and autonomous operation feature settings or configuration information. The date and time may be used to identify one vehicle trip or one period of autonomous operation feature use, in addition to indicating risk levels due to traffic or other factors. The additional location and environmental data may include information regarding the position of the vehicle **108** from the GPS unit **206** and its surrounding environment (e.g., road conditions, weather conditions, nearby traffic conditions, type of road, construction conditions, presence of pedestrians, presence of other obstacles, availability of autonomous communications from external sources, etc.). Vehicle condition information may include information regarding the type, make, and model of the vehicle **108**, the age or mileage of the vehicle **108**, the status of vehicle equipment (e.g., tire pressure, non-functioning lights, fluid levels, etc.), or other information relating to the vehicle **108**. In some embodiments, the timestamp may be recorded on the client device **114**, the mobile device **110**, or the server **140**.

[0086] The autonomous operation feature settings may correspond to information regarding the autonomous operation features, such as those described above with reference to the autonomous vehicle operation method **300**. The autonomous operation feature configuration information may correspond to information regarding the number and type of the sensors **120**, the disposition of the sensors **120** within the vehicle **108**, the one or more autonomous operation features (e.g., the autonomous vehicle operation application **232** or the software routines **240**), autonomous operation feature control software, versions of the software applications **230** or routines **240** implementing the autonomous operation features, or other related information regarding the autonomous operation features. For example, the configuration information may include the make and model of the vehicle **108** (indicating installed sensors **120** and the type of on-board computer **114**), an indication of a malfunctioning or obscured sensor **120** in part of the vehicle **108**, information regarding additional after-market sensors **120** installed within the vehicle **108**, a software program type and version for a control program installed as an application **230** on the on-board computer **114**, and software program types and versions for each of a plurality of autonomous operation features installed as applications **230** or routines **240** in the program memory **208** of the on-board computer **114**.

[0087] During operation, the sensors **120** may generate sensor data regarding the vehicle **108** and its environment. In some embodiments, one or more of the sensors **120** may preprocess the measurements and communicate the resulting processed data to the on-board computer **114**. The controller

204 may receive sensor data from the sensors **120** at block **406**. The sensor data may include information regarding the vehicle's position, speed, acceleration, direction, and responsiveness to controls. The sensor data may further include information regarding the location and movement of obstacles or obstructions (e.g., other vehicles, buildings, barriers, pedestrians, animals, trees, or gates), weather conditions (e.g., precipitation, wind, visibility, or temperature), road conditions (e.g., lane markings, potholes, road material, traction, or slope), signs or signals (e.g., traffic signals, construction signs, building signs or numbers, or control gates), or other information relating to the vehicle's environment.

[0088] In addition to receiving sensor data from the sensors **120**, in some embodiments the controller **204** may receive autonomous communication data from the communication component **122** or the communication module **220** at block **408**. The communication data may include information from other autonomous vehicles (e.g., sudden changes to vehicle speed or direction, intended vehicle paths, hard braking, vehicle failures, collisions, or maneuvering or stopping capabilities), infrastructure (road or lane boundaries, bridges, traffic signals, control gates, or emergency stopping areas), or other external sources (e.g., map databases, weather databases, or traffic and accident databases).

[0089] At block **410**, the controller **204** may process the sensor data, the communication data, and the settings or configuration information to determine whether an incident has occurred. Incidents may include collisions, hard braking, hard acceleration, evasive maneuvering, loss of traction, detection of objects within a threshold distance from the vehicle **108**, alerts presented to the vehicle operator, component failure, inconsistent readings from sensors **120**, or attempted unauthorized access to the on-board computer by external sources. When an incident is determined to have occurred at block **412**, information regarding the incident and the vehicle status may be recorded at block **414**, either in the data storage **228** or the database **146**. The information recorded at block **414** may include sensor data, communication data, and settings or configuration information prior to, during, and immediately following the incident. The information may further include a determination of whether the vehicle **108** has continued operating (either autonomously or manually) or whether the vehicle **108** is capable of continuing to operate in compliance with applicable safety and legal requirements. If the controller **204** determines that the vehicle **108** has discontinued operation or is unable to continue operation at block **416**, the method **400** may terminate. If the vehicle **108** continues operation, then the method **400** may continue at block **418**.

[0090] In some embodiments, the controller **204** may further determine information regarding the likely cause of a collision or other incident. Alternatively, or additionally, the server **140** may receive information regarding an incident from the on-board computer **114** and determine relevant additional information regarding the incident from the sensor data. For example, the sensor data may be used to determine the points of impact on the vehicle **108** and another vehicle involved in a collision, the relative velocities of each vehicle, the road conditions at the time of the incident, and the likely cause or the party likely at fault. This information may be used to determine risk levels associated

with autonomous vehicle operation, as described below, even where the incident is not reported to the insurer.

[0091] At block 418, the controller 204 may determine whether a change or adjustment to one or more of the settings or configuration of the autonomous operation features has occurred. Changes to the settings may include enabling or disabling an autonomous operation feature or adjusting the feature's parameters (e.g., resetting the speed on an adaptive cruise control feature). If the settings or configuration are determined to have changed, the new settings or configuration may be recorded at block 422, either in the data storage 228 or the database 146.

[0092] At block 424, the controller 204 may record the operating data relating to the vehicle 108 in the data storage 228 or communicate the operating data to the server 140 via the network 130 for recordation in the database 146. The operating data may include the settings or configuration information, the sensor data, and the communication data discussed above. In some embodiments, operating data related to normal autonomous operation of the vehicle 108 may be recorded. In other embodiments, only operating data related to incidents of interest may be recorded, and operating data related to normal operation may not be recorded. In still other embodiments, operating data may be stored in the data storage 228 until a sufficient connection to the network 130 is established, but some or all types of incident information may be transmitted to the server 140 using any available connection via the network 130.

[0093] At block 426, the controller 204 may determine whether the vehicle 108 is continuing to operate. In some embodiments, the method 400 may terminate when all autonomous operation features are disabled, in which case the controller 204 may determine whether any autonomous operation features remain enabled at block 426. When the vehicle 108 is determined to be operating (or operating with at least one autonomous operation feature enabled) at block 426, the method 400 may continue through blocks 406-426 until vehicle operation has ended. When the vehicle 108 is determined to have ceased operating (or is operating without autonomous operation features enabled) at block 426, the controller 204 may record the completion of operation at block 428, either in the data storage 228 or the database 146. In some embodiments, a second timestamp corresponding to the completion of vehicle operation may likewise be recorded, as above.

Exemplary Evaluation Methods

[0094] FIG. 5 illustrates a flow diagram of an exemplary autonomous operation feature evaluation method 500 for determining the effectiveness of autonomous operation features, which may be implemented by the autonomous vehicle insurance system 100. The method 500 begins by monitoring and recording the responses of an autonomous operation feature in a test environment at block 502. The test results are then used to determine a plurality of risk levels for the autonomous operation feature corresponding to the effectiveness of the feature in situations involving various conditions, configurations, and settings at block 504. Once a baseline risk profile of the plurality of risk levels has been established at block 504, the method 500 may refine or adjust the risk levels based upon operating data and actual losses for insured autonomous vehicles operation outside the test environment in blocks 506-510. Although FIG. 5 shows the method for only one autonomous operation feature, it

should be understood that the method 500 may be performed to evaluate each of any number of autonomous operation features or combinations of autonomous operation features. In some embodiments, the method 500 may be implemented for a plurality of autonomous operation features concurrently on multiple servers 140 or at different times on one or more servers 140.

[0095] At block 502, the effectiveness of an autonomous operation feature is tested in a controlled testing environment by presenting test conditions and recording the responses of the feature. The testing environment may include a physical environment in which the autonomous operation feature is tested in one or more vehicles 108. Additionally, or alternatively, the testing environment may include a virtual environment implemented on the server 140 or another computer system in which the responses of the autonomous operation feature are simulated. Physical or virtual testing may be performed for a plurality of vehicles 108 and sensors 120 or sensor configurations, as well as for multiple settings of the autonomous operation feature. In some embodiments, the compatibility or incompatibility of the autonomous operation feature with vehicles 108, sensors 120, communication units 122, on-board computers 114, control software, or other autonomous operation features may be tested by observing and recording the results of a plurality of combinations of these with the autonomous operation feature. For example, an autonomous operation feature may perform well in congested city traffic conditions, but that will be of little use if it is installed in an automobile with control software that operates only above 30 miles per hour. Additionally, some embodiments may further test the response of autonomous operation features or control software to attempts at unauthorized access (e.g., computer hacking attempts), which results may be used to determine the stability or reliability of the autonomous operation feature or control software.

[0096] The test results may be recorded by the server 140. The test results may include responses of the autonomous operation feature to the test conditions, along with configuration and setting data, which may be received by the on-board computer 114 and communicated to the server 140. During testing, the on-board computer 114 may be a special-purpose computer or a general-purpose computer configured for generating or receiving information relating to the responses of the autonomous operation feature to test scenarios. In some embodiments, additional sensors may be installed within the vehicle 108 or in the vehicle environment to provide additional information regarding the response of the autonomous operation feature to the test conditions, which additional sensors may not provide sensor data to the autonomous operation feature.

[0097] In some embodiments, new versions of previously tested autonomous operation features may not be separately tested, in which case the block 502 may not be present in the method 500. In such embodiments, the server 140 may determine the risk levels associated with the new version by reference to the risk profile of the previous version of the autonomous operation feature in block 504, which may be adjusted based upon actual losses and operating data in blocks 506-510. In other embodiments, each version of the autonomous operation feature may be separately tested, either physically or virtually. Alternatively, or additionally, a limited test of the new version of the autonomous operation feature may be performed and compared to the test results of

the previous version, such that additional testing may not be performed when the limited test results of the new version are within a predetermined range based upon the test results of the previous version.

[0098] FIG. 6 illustrates a flow diagram of an exemplary autonomous operation feature testing method 600 for presenting test conditions to an autonomous operation feature and observing and recording responses to the test conditions in accordance with the method 500. Although the method 600 is illustrated for one autonomous operation feature, it should be understood that the exemplary method 600 may be performed to test any number of features or combinations of features. At block 602, the server 140 may determine the scope of the testing based upon the autonomous operation feature and the availability of test results for related or similar autonomous operation features (e.g., previous versions of the feature). The scope of the testing may include parameters such as configurations, settings, vehicles 108, sensors 120, communication units 122, on-board computers 114, control software, other autonomous operation features, or combinations of these parameters to be tested.

[0099] At block 604, the autonomous operation feature is enabled within a test system with a set of parameters determined in block 602. The test system may be a vehicle 108 or a computer simulation, as discussed above. The autonomous operation feature or the test system may be configured to provide the desired parameter inputs to the autonomous operation feature. For example, the controller 204 may disable a number of sensors 120 or may provide only a subset of available sensor data to the autonomous operation feature for the purpose of testing the feature's response to certain parameters.

[0100] At block 606, test inputs are presented to the autonomous operation feature, and responses of the autonomous operation feature are observed at block 608. The test inputs may include simulated data presented by the on-board computer 114 or sensor data from the sensors 120 within the vehicle 108. In some embodiments, the vehicle 108 may be controlled within a physical test environment by the on-board computer 114 to present desired test inputs through the sensors 120. For example, the on-board computer 114 may control the vehicle 108 to maneuver near obstructions or obstacles, accelerate, or change directions to trigger responses from the autonomous operation feature. The test inputs may also include variations in the environmental conditions of the vehicle 108, such as by simulating weather conditions that may affect the performance of the autonomous operation feature (e.g., snow or ice cover on a roadway, rain, or gusting crosswinds, etc.).

[0101] In some embodiments, additional vehicles may be used to test the responses of the autonomous operation feature to moving obstacles. These additional vehicles may likewise be controlled by on-board computers or remotely by the server 140 through the network 130. In some embodiments, the additional vehicles may transmit autonomous communication information to the vehicle 108, which may be received by the communication component 122 or the communication unit 220 and presented to the autonomous operation feature by the on-board computer 114. Thus, the response of the autonomous operation feature may be tested with and without autonomous communications from external sources. The responses of the autonomous operation feature may be observed as output signals from the autonomous operation feature to the on-board computer 114 or the

vehicle controls. Additionally, or alternatively, the responses may be observed by sensor data from the sensors 120 and additional sensors within the vehicle 108 or placed within the vehicle environment.

[0102] At block 610, the observed responses of the autonomous operation feature are recorded for use in determining effectiveness of the feature. The responses may be recorded in the data storage 228 of the on-board computer 114 or in the database 146 of the server 140. If the responses are stored on the on-board computer 114 during testing, the results may be communicated to the server 140 via the network either during or after completion of testing.

[0103] At block 612, the on-board computer 114 or the server 140 may determine whether the additional sets of parameters remain for which the autonomous operation feature is to be tested, as determined in block 602. When additional parameter sets are determined to remain at block 612, they are separately tested according to blocks 604-610. When no additional parameter sets are determined to exist at block 612, the method 600 terminates.

[0104] Referring again to FIG. 5, the server 140 may determine a baseline risk profile for the autonomous operation feature from the recorded test results at block 504, including a plurality of risk levels corresponding to a plurality of sets of parameters such as configurations, settings, vehicles 108, sensors 120, communication units 122, on-board computers 114, control software, other autonomous operation features, or combinations of these. The server 140 may determine the risk levels associated with the autonomous operation feature by implementing the feature evaluation application 142 to determine the effectiveness of the feature. In some embodiments, the server 140 may further implement the compatibility evaluation application 143 to determine the effectiveness of combinations of features based upon test results and other information. Additionally, or alternatively, in some embodiments, the baseline risk profile may not depend upon the type, make, model, year, or other aspect of the vehicle 108. In such embodiments, the baseline risk profile and adjusted risk profiles may correspond to the effectiveness or risk levels associated with the autonomous operation features across a range of vehicles, disregarding any variations in effectiveness or risk levels associated with operation of the features in different vehicles.

[0105] FIG. 7 illustrates a flow diagram of an exemplary autonomous feature evaluation method 700 for determining the effectiveness of an autonomous operation feature under a set of environmental conditions, configuration conditions, and settings. Although the method 700 shows determination of a risk level associated with an autonomous operation feature within one set of parameters, it should be understood that the method 700 may be implemented for any number of sets of parameters for any number of autonomous features or combinations thereof.

[0106] At block 702, the server 140 receives the test result data observed and recorded in block 502 for the autonomous operation feature in conjunction with a set of parameters. In some embodiments, the test result data may be received from the on-board computer 114 or from the database 146. In addition, in some embodiments, the server 140 may receive reference data for other autonomous operation features in use on insured autonomous vehicles at block 704, such as test result data and corresponding actual loss or operating data for the other autonomous operation features.

The reference data received at block **704** may be limited to data for other autonomous operation features having sufficient similarity to the autonomous operation feature being evaluated, such as those performing a similar function, those with similar test result data, or those meeting a minimum threshold level of actual loss or operating data.

[10107] Using the test result data received at block **702** and the reference data received at block **704**, the server **140** determines the expected actual loss or operating data for the autonomous operation feature at block **706**. The server **140** may determine the expected actual loss or operating data using known techniques, such as regression analysis or machine learning tools (e.g., neural network algorithms or support vector machines). The expected actual loss or operating data may be determined using any useful metrics, such as expected loss value, expected probabilities of a plurality of collisions or other incidents, expected collisions per unit time or distance traveled by the vehicle, etc.

[10108] At block **708**, the server **140** may further determine a risk level associated with the autonomous operation feature in conjunction with the set of parameters received in block **702**. The risk level may be a metric indicating the risk of collision, malfunction, or other incident leading to a loss or claim against a vehicle insurance policy covering a vehicle in which the autonomous operation feature is functioning. The risk level may be defined in various alternative ways, including as a probability of loss per unit time or distance traveled, a percentage of collisions avoided, or a score on a fixed scale. In a preferred embodiment, the risk level is defined as an effectiveness rating score such that a higher score corresponds to a lower risk of loss associated with the autonomous operation feature.

[10109] Referring again to FIG. **5**, the method **700** may be implemented for each relevant combination of an autonomous operation feature in conjunction with a set of parameters relating to environmental conditions, configuration conditions, and settings. It may be beneficial in some embodiments to align the expected losses or operating data metrics with loss categories for vehicle insurance policies. Once the baseline risk profile is determined for the autonomous operation feature, the plurality of risk levels in the risk profile may be updated or adjusted in blocks **506-510** using actual loss and operating data from autonomous vehicles operating in the ordinary course, viz. not in a test environment.

[10110] At block **506**, the server **140** may receive operating data from one or more vehicles **108** via the network **130** regarding operation of the autonomous operation feature. The operating data may include the operating data discussed above with respect to monitoring method **400**, including information regarding the vehicle **108**, the vehicle's environment, the sensors **120**, communications for external sources, the type and version of the autonomous operation feature, the operation of the feature, the configuration and settings relating to the operation of the feature, the operation of other autonomous operation features, control actions performed by the vehicle operator, or the location and time of operation. The operating data may be received by the server **140** from the on-board computer **114** or the mobile device **110** implementing the monitoring method **400** or from other sources, and the server **140** may receive the operating data either periodically or continually.

[10111] At block **508**, the server **140** may receive data regarding actual losses on autonomous vehicles that

included the autonomous operation feature. This information may include claims filed pursuant to insurance policies, claims paid pursuant to insurance policies, accident reports filed with government agencies, or data from the sensors **120** regarding incidents (e.g., collisions, alerts presented, etc.). This actual loss information may further include details such as date, time, location, traffic conditions, weather conditions, road conditions, vehicle speed, vehicle heading, vehicle operating status, autonomous operation feature configuration and settings, autonomous communications transmitted or received, points of contact in a collision, velocity and movements of other vehicles, or additional information relevant to determining the circumstances involved in the actual loss.

[10112] At block **510**, the server **140** may process the information received at blocks **506** and **508** to determine adjustments to the risk levels determined at block **504** based upon actual loss and operating data for the autonomous operation feature. Adjustments may be necessary because of factors such as sensor failure, interference disrupting autonomous communication, better or worse than expected performance in heavy traffic conditions, etc. The adjustments to the risk levels may be made by methods similar to those used to determine the baseline risk profile for the autonomous operation feature or by other known methods (e.g., Bayesian updating algorithms). The updating procedure of blocks **506-510** may be repeatedly implemented periodically or continually as new data become available to refine and update the risk levels or risk profile associated with the autonomous operation feature. In subsequent iterations, the most recently updated risk profile or risk levels may be adjusted, rather than the initial baseline risk profile or risk levels determined in block **504**.

Exemplary Autonomous Vehicle Insurance Risk and Price Determination Methods

[10113] The risk profiles or risk levels associated with one or more autonomous operation features determined above may be further used to determine risk categories or premiums for vehicle insurance policies covering autonomous vehicles. FIGS. **8-10** illustrate flow diagrams of exemplary embodiments of methods for determining risk associated with an autonomous vehicle or premiums for vehicle insurance policies covering an autonomous vehicle. In some embodiments or under some conditions, the autonomous vehicle may be a fully autonomous vehicle operating without a vehicle operator's input or presence. In other embodiments or under other conditions, the vehicle operator may control the vehicle with or without the assistance of the vehicle's autonomous operation features. For example, the vehicle may be fully autonomous only above a minimum speed threshold or may require the vehicle operator to control the vehicle during periods of heavy precipitation. Alternatively, the autonomous vehicle may perform all relevant control functions using the autonomous operation features under all ordinary operating conditions. In still further embodiments, the vehicle **108** may operate in either a fully or a partially autonomous state, while receiving or transmitting autonomous communications.

[10114] Where the vehicle **108** operates only under fully autonomous control by the autonomous operation features under ordinary operating conditions or where control by a vehicle operator may be disregarded for insurance risk and price determination, the method **800** may be implemented to

determine the risk level or premium associated with an insurance policy covering the autonomous vehicle. Where the vehicle 108 may be operated manually under some conditions, the method 900 may be implemented to determine the risk level or premium associated with an insurance policy covering the autonomous vehicle, including a determination of the risks associated with the vehicle operator performing manual vehicle operation. Where the vehicle 108 may be operated with the assistance of autonomous communications features, the method 1000 may be implemented to determine the risk level or premium associated with an insurance policy covering the autonomous vehicle, including a determination of the expected use of autonomous communication features by external sources in the relevant environment of the vehicle 108 during operation of the vehicle 108.

[0115] FIG. 8 illustrates a flow diagram depicting an exemplary embodiment of a fully autonomous vehicle insurance pricing method 800, which may be implemented by the autonomous vehicle insurance system 100. The method 800 may be implemented by the server 140 to determine a risk level or price for a vehicle insurance policy covering a fully autonomous vehicle based upon the risk profiles of the autonomous operation features in the vehicle. It is important to note that the risk category or price is determined without reference to factors relating to risks associated with a vehicle operator (e.g., age, experience, prior history of vehicle operation). Instead, the risk and price may be determined based upon the vehicle 108, the location and use of the vehicle 108, and the autonomous operation features of the vehicle 108.

[0116] At block 802, the server 140 receives a request to determine a risk category or premium associated with a vehicle insurance policy for a fully autonomous vehicle. The request may be caused by a vehicle operator or other customer or potential customer of an insurer, or by an insurance broker or agent. The request may also be generated automatically (e.g., periodically for repricing or renewal of an existing vehicle insurance policy). In some instances, the server 140 may generate the request upon the occurrence of specified conditions.

[0117] At block 804, the server 140 receives information regarding the vehicle 108, the autonomous operation features installed within the vehicle 108, and anticipated or past use of the vehicle 108. The information may include vehicle information (e.g., type, make, model, year of production, safety features, modifications, installed sensors, on-board computer information, etc.), autonomous operation features (e.g., type, version, connected sensors, compatibility information, etc.), and use information (e.g., primary storage location, primary use, primary operating time, past use as monitored by an on-board computer or mobile device, past use of one or more vehicle operators of other vehicles, etc.). The information may be provided by a person having an interest in the vehicle, a customer, or a vehicle operator, and/or the information may be provided in response to a request for the information by the server 140. Alternatively, or additionally, the server 140 may request or receive the information from one or more databases communicatively connected to the server 140 through the network 130, which may include databases maintained by third parties (e.g., vehicle manufacturers or autonomous operation feature manufacturers). In some embodiments, information regarding the vehicle 108 may be excluded, in which case the risk

or premium determinations below may likewise exclude the information regarding the vehicle 108.

[0118] At block 806, the server 140 may determine the risk profile or risk levels associated with the vehicle 108 based upon the vehicle information and the autonomous operation feature information received at block 804. The risk levels associated with the vehicle 108 may be determined as discussed above with respect to the method 500 and/or may be determined by looking up in a database the risk level information previously determined. In some embodiments, the information regarding the vehicle may be given little or no weight in determining the risk levels. In other embodiments, the risk levels may be determined based upon a combination of the vehicle information and the autonomous operation information. As with the risk levels associated with the autonomous operation features discussed above, the risk levels associated with the vehicle may correspond to the expected losses or incidents for the vehicle based upon its autonomous operation features, configuration, settings, and/or environmental conditions of operation. For example, a vehicle may have a risk level of 98% effectiveness when on highways during fair weather days and a risk level of 87% effectiveness when operating on city streets at night in moderate rain. A plurality of risk levels associated with the vehicle may be combined with estimates of anticipated vehicle use conditions to determine the total risk associated with the vehicle.

[0119] At block 808, the server 140 may determine the expected use of the vehicle 108 in the relevant conditions or with the relevant settings to facilitate determining a total risk for the vehicle 108. The server 140 may determine expected vehicle use based upon the use information received at block 804, which may include a history of prior use recorded by the vehicle 108 and/or another vehicle. For example, recorded vehicle use information may indicate that 80% of vehicle use occurs during weekday rush hours in or near a large city, that 20% occurs on nights and weekends. From this information, the server 140 may determine that 80% (75%, 90%, etc.) of the expected use of the vehicle 108 is in heavy traffic and that 20% (25%, 10%, etc.) is in light traffic. The server 140 may further determine that vehicle use is expected to be 60% on limited access highways and 40% on surface streets. Based upon the vehicle's typical storage location, the server 140 may access weather data for the location to determine expected weather conditions during the relevant times. For example, the server 140 may determine that 20% of the vehicle's operation on surface streets in heavy traffic will occur in rain or snow. In a similar manner, the server 140 may determine a plurality of sets of expected vehicle use parameters corresponding to the conditions of use of the vehicle 108. These conditions may further correspond to situations in which different autonomous operation features may be engaged and/or may be controlling the vehicle. Additionally, or alternatively, the vehicle use parameters may correspond to different risk levels associated with the autonomous operation features. In some embodiments, the expected vehicle use parameters may be matched to the most relevant vehicle risk level parameters, viz. the parameters corresponding to vehicle risk levels that have the greatest predictive effect and/or explanatory power.

[0120] At block 810, the server 140 may use the risk levels determined at block 806 and the expected vehicle use levels determined at block 808 to determine a total expected risk

level. To this end, it may be advantageous to attempt to match the vehicle use parameters as closely as possible to the vehicle risk level parameters. For example, the server 140 may determine the risk level associated with each of a plurality of sets of expected vehicle use parameters. In some embodiments, sets of vehicle use parameters corresponding to zero or negligible (e.g., below a predetermined threshold probability) expected use levels may be excluded from the determination for computational efficiency. The server 140 may then weight the risk levels by the corresponding expected vehicle use levels, and aggregate the weighted risk levels to obtain a total risk level for the vehicle 108. In some embodiments, the aggregated weighted risk levels may be adjusted or normalized to obtain the total risk level for the vehicle 108. In some embodiments, the total risk level may correspond to a regulatory risk category or class of a relevant insurance regulator.

[0121] At block 812, the server 140 may determine one or more premiums for vehicle insurance policies covering the vehicle 108 based upon the total risk level determined at block 810. These policy premiums may also be determined based upon additional factors, such as coverage type and/or amount, expected cost to repair or replace the vehicle 108, expected cost per claim for liability in the locations where the vehicle 108 is typically used, discounts for other insurance coverage with the same insurer, and/or other factors unrelated to the vehicle operator. In some embodiments, the server 140 may further communicate the one or more policy premiums to a customer, broker, agent, or other requesting person or organization via the network 130. The server 140 may further store the one or more premiums in the database 146.

[0122] FIG. 9 illustrates a flow diagram depicting an exemplary embodiment of a partially autonomous vehicle insurance pricing method 900, which may be implemented by the autonomous vehicle insurance system 100 in a manner similar to that of the method 800. The method 900 may be implemented by the server 140 to determine a risk category and/or price for a vehicle insurance policy covering an autonomous vehicle based upon the risk profiles of the autonomous operation features in the vehicle and/or the expected use of the autonomous operation features. In addition to information regarding the vehicle 108 and the autonomous operation features, the method 900 includes information regarding the vehicle operator, including information regarding the expected use of the autonomous operation features and/or the expected settings of the features under various conditions. Such additional information is relevant where the vehicle operator may control the vehicle 108 under some conditions and/or may determine settings affecting the effectiveness of the autonomous operation features.

[0123] At block 902, the server 140 may receive a request to determine a risk category and/or premium associated with a vehicle insurance policy for an autonomous vehicle in a manner similar to block 802 described above. At block 904, the server 140 likewise receives information regarding the vehicle 108, the autonomous operation features installed within the vehicle 108, and/or anticipated or past use of the vehicle 108. The information regarding anticipated or past use of the vehicle 108 may include information regarding past use of one or more autonomous operation features, and/or settings associated with use of the features. For example, this may include times, road conditions, and/or

weather conditions when autonomous operation features have been used, as well as similar information for past vehicle operation when the features have been disabled. In some embodiments, information regarding the vehicle 108 may be excluded, in which case the risk or premium determinations below may likewise exclude the information regarding the vehicle 108. At block 906, the server 140 may receive information related to the vehicle operator, including standard information of a type typically used in actuarial analysis of vehicle operator risk (e.g., age, location, years of vehicle operation experience, and/or vehicle operating history of the vehicle operator).

[0124] At block 908, the server 140 may determine the risk profile or risk levels associated with the vehicle 108 based upon the vehicle information and the autonomous operation feature information received at block 904. The risk levels associated with the vehicle 108 may be determined as discussed above with respect to the method 500 and/or as further discussed with respect to method 800.

[0125] At block 910, the server 140 may determine the expected manual and/or autonomous use of the vehicle 108 in the relevant conditions and/or with the relevant settings to facilitate determining a total risk for the vehicle 108. The server 140 may determine expected vehicle use based upon the use information received at block 904, which may include a history of prior use recorded by the vehicle 108 and/or another vehicle for the vehicle operator. Expected manual and autonomous use of the vehicle 108 may be determined in a manner similar to that discussed above with respect to method 800, but including an additional determination of the likelihood of autonomous and/or manual operation by the vehicle operation under the various conditions. For example, the server 140 may determine based upon past operating data that the vehicle operator manually controls the vehicle 108 when on a limited-access highway only 20% of the time in all relevant environments, but the same vehicle operator controls the vehicle 60% of the time on surface streets outside of weekday rush hours and 35% of the time on surface streets during weekday rush hours. These determinations may be used to further determine the total risk associated with both manual and/or autonomous vehicle operation.

[0126] At block 912, the server 140 may use the risk levels determined at block 908 and the expected vehicle use levels determined at block 910 to determine a total expected risk level, including both manual and autonomous operation of the vehicle 108. The autonomous operation risk levels may be determined as above with respect to block 810. The manual operation risk levels may be determined in a similar manner, but the manual operation risk may include risk factors related to the vehicle operator. In some embodiments, the manual operation risk may also be determined based upon vehicle use parameters and/or related autonomous operation feature risk levels for features that assist the vehicle operator in safely controlling the vehicle. Such features may include alerts, warnings, automatic braking for collision avoidance, and/or similar features that may provide information to the vehicle operator or take control of the vehicle from the vehicle operator under some conditions. These autonomous operation features may likewise be associated with different risk levels that depend upon settings selected by the vehicle operator. Once the risk levels associated with autonomous operation and manual operation under various parameter sets that have been weighted by the

expected use levels, the total risk level for the vehicle and operator may be determined by aggregating the weighted risk levels. As above, the total risk level may be adjusted or normalized, and/or it may be used to determine a risk category or risk class in accordance with regulatory requirements.

[0127] At block 914, the server 140 may determine one or more premiums for vehicle insurance policies covering the vehicle 108 based upon the total risk level determined at block 812. As in method 800, additional factors may be included in the determination of the policy premiums, and/or the premiums may be adjusted based upon additional factors. The server 140 may further record the premiums or may transmit one or more of the policy premiums to relevant parties.

[0128] FIG. 10 illustrates a flow diagram depicting an exemplary embodiment of an autonomous vehicle insurance pricing method 1000 for determining risk and/or premiums for vehicle insurance policies covering autonomous vehicles with autonomous communication features, which may be implemented by the autonomous vehicle insurance system 100. The method 1000 may determine risk levels as without autonomous communication discussed above with reference to methods 800 and/or 900, then adjust the risk levels based upon the availability and effectiveness of communications between the vehicle 108 and external sources. Similar to environmental conditions, the availability of external sources such as other autonomous vehicles for communication with the vehicle 108 affects the risk levels associated with the vehicle 108. For example, use of an autonomous communication feature may significantly reduce risk associated with autonomous operation of the vehicle 108 only where other autonomous vehicles also use autonomous communication features to send and/or receive information.

[0129] At block 1002, the server 140 may receive a request to determine a risk category or premium associated with a vehicle insurance policy for an autonomous vehicle with one or more autonomous communication features in a manner similar to blocks 802 and/or 902 described above. At block 1004, the server 140 likewise receives information regarding the vehicle 108, the autonomous operation features installed within the vehicle 108 (including autonomous communication features), the vehicle operator, and/or anticipated or past use of the vehicle 108. The information regarding anticipated or past use of the vehicle 108 may include information regarding locations and times of past use, as well as past use of one or more autonomous communication features. For example, this may include locations, times, and/or details of communication exchanged by an autonomous communication feature, as well as information regarding past vehicle operation when no autonomous communication occurred. This information may be used to determine the past availability of external sources for autonomous communication with the vehicle 108, facilitating determination of expected future availability of autonomous communication as described below. In some embodiments, information regarding the vehicle 108 may be excluded, in which case the risk or premium determinations below may likewise exclude the information regarding the vehicle 108.

[0130] At block 1006, the server 140 may determine the risk profile or risk levels associated with the vehicle 108 based upon the vehicle information, the autonomous operation feature information, and/or the vehicle operator infor-

mation received at block 1004. The risk levels associated with the vehicle 108 may be determined as discussed above with respect to the method 500 and as further discussed with respect to methods 800 and 900. At block 1008, the server 140 may determine the risk profile and/or risk levels associated with the vehicle 108 and/or the autonomous communication features. This may include a plurality of risk levels associated with a plurality of autonomous communication levels and/or other parameters relating to the vehicle 108, the vehicle operator, the autonomous operation features, the configuration and/or setting of the autonomous operation features, and/or the vehicle's environment. The autonomous communication levels may include information regarding the proportion of vehicles in the vehicle's environment that are in autonomous communication with the vehicle 108, levels of communication with infrastructure, types of communication (e.g., hard braking alerts, full velocity information, etc.), and/or other information relating to the frequency and/or quality of autonomous communications between the autonomous communication feature and the external sources.

[0131] At block 1010, the server 140 may then determine the expected use levels of the vehicle 108 in the relevant conditions, autonomous operation feature settings, and/or autonomous communication levels to facilitate determining a total risk for the vehicle 108. The server 140 may determine expected vehicle use based upon the use information received at block 1004, including expected levels of autonomous communication under a plurality of sets of parameters. For example, the server 140 may determine based upon past operating data that the 50% of the total operating time of the vehicle 108 is likely to occur in conditions where approximately a quarter of the vehicles utilize autonomous communication features, 40% of the total operating time is likely to occur in conditions where a negligible number of vehicles utilize autonomous communication features, and/or 10% is likely to occur in conditions where approximately half of vehicles utilize autonomous communication features. Of course, each of the categories in the preceding example may be further divided by other conditions, such as traffic levels, weather, average vehicle speed, presence of pedestrians, location, autonomous operation feature settings, and/or other parameters. These determinations may be used to further determine the total risk associated with autonomous vehicle operation including autonomous communication.

[0132] At block 1012, the server 140 may use the risk levels determined at block 1010 to determine a total expected risk level for the vehicle 108 including one or more autonomous communication features, in a similar manner to the determination described above in block 810. The server 140 may weight each of the risk levels corresponding to sets of parameters by the expected use levels corresponding to the same set of parameters. The weighted risk levels may then be aggregated using known techniques to determine the total risk level. As above, the total risk level may be adjusted or normalized, or it may be used to determine a risk category or risk class in accordance with regulatory requirements.

[0133] At block 1014, the server 140 may determine one or more premiums for vehicle insurance policies covering the vehicle 108 based upon the total risk level determined at block 1012. As in methods 800 and/or 900, additional factors may be included in the determination of the policy premiums, and/or the premiums may be adjusted based upon

additional factors. The server **140** may further record the premiums and/or may transmit one or more of the policy premiums to relevant parties.

[0134] In any of the preceding embodiments, the determined risk level or premium associated with one or more insurance policies may be presented by the server **140** to a customer or potential customer as offers for one or more vehicle insurance policies. The customer may view the offered vehicle insurance policies on a display such as the display **202** of the mobile device **110**, select one or more options, and/or purchase one or more of the vehicle insurance policies. The display, selection, and/or purchase of the one or more policies may be facilitated by the server **140**, which may communicate via the network **130** with the mobile device **110** and/or another computer device accessed by the user.

Exemplary Method of Adjusting Insurance

[0135] In one aspect, a computer-implemented method of adjusting an insurance policy may be provided. The method may include (a) determining an accident risk factor, analyzing, via a processor, the effect on the risk of, or associated with, a potential vehicle accident of (1) an autonomous or semi-autonomous vehicle technology, and/or (2) an accident-related factor or element; (b) adjusting, updating, or creating (via the processor) an automobile insurance policy (or premium) for an individual vehicle equipped with the autonomous or semi-autonomous vehicle technology based upon the accident risk factor determined; and/or (c) presenting on a display screen (or otherwise communicating) all or a portion of the insurance policy (or premium) adjusted, updated, or created for the individual vehicle equipped with the autonomous or semi-autonomous vehicle functionality for review, approval, or acceptance by a new or existing customer, or an owner or operator of the individual vehicle. The method may include additional, fewer, or alternate actions, including those discussed elsewhere herein.

[0136] The autonomous or semi-autonomous vehicle technology may include and/or be related to a fully autonomous vehicle and/or limited human driver control. The autonomous or semi-autonomous vehicle technology may include and/or be related to: (a) automatic or semi-automatic steering; (b) automatic or semi-automatic acceleration and/or braking; (c) automatic or semi-automatic blind spot monitoring; (d) automatic or semi-automatic collision warning; (e) adaptive cruise control; and/or (f) automatic or semi-automatic parking assistance. Additionally or alternatively, the autonomous or semi-autonomous vehicle technology may include and/or be related to: (g) driver alertness or responsive monitoring; (h) pedestrian detection; (i) artificial intelligence and/or back-up systems; (j) navigation, GPS (Global Positioning System)-related, and/or road mapping systems; (k) security and/or anti-hacking measures; and/or (l) theft prevention and/or vehicle location determination systems or features.

[0137] The accident-related factor or element may be related to various factors associated with (a) past and/or potential or predicted vehicle accidents, and/or (b) autonomous or semi-autonomous vehicle testing or test data. Accident-related factors or elements that may be analyzed, such as for their impact upon automobile accident risk and/or the likelihood that the autonomous or semi-autonomous vehicle will be involved in an automobile accident, may include: (1) point of vehicle impact; (2) type of road involved in the

accident or on which the vehicle typically travels; (3) time of day that an accident has occurred or is predicted to occur, or time of day that the vehicle owner typically drives; (4) weather conditions that impact vehicle accidents; (5) type or length of trip; (6) vehicle style or size; (7) vehicle-to-vehicle wireless communication; and/or (8) vehicle-to-infrastructure (and/or infrastructure-to-vehicle) wireless communication.

[0138] The risk factor may be determined for the autonomous or semi-autonomous vehicle technology based upon an ability of the autonomous or semi-autonomous vehicle technology, and/or versions of, or updates to, computer instructions (stored on non-transitory computer readable medium or memory) associated with the autonomous or semi-autonomous vehicle technology, to make driving decisions and avoid crashes without human interaction. The adjustment to the insurance policy may include adjusting an insurance premium, discount, reward, or other item associated with the insurance policy based upon the risk factor (or accident risk factor) determined for the autonomous or semi-autonomous vehicle technology.

[0139] The method may further include building a database or model of insurance or accident risk assessment from (a) past vehicle accident information, and/or (b) autonomous or semi-autonomous vehicle testing information. Analyzing the effect on risk associated with a potential vehicle accident based upon (1) an autonomous or semi-autonomous vehicle technology, and/or (2) an accident-related factor or element (such as factors related to type of accident, road, and/or vehicle, and/or weather information, including those factors mentioned elsewhere herein) to determine an accident risk factor may involve a processor accessing information stored within the database or model of insurance or accident risk assessment.

Exemplary Method of Adjusting Insurance Based Upon Artificial Intelligence

[0140] In one aspect, a computer-implemented method of adjusting (or generating) an insurance policy may be provided. The method may include (1) evaluating, via a processor, a performance of an autonomous or semi-autonomous driving package of computer instructions (or software package) and/or a sophistication of associated artificial intelligence in a test environment; (2) analyzing, via the processor, loss experience associated with the computer instructions (and/or associated artificial intelligence) to determine effectiveness in actual driving situations; (3) determining, via the processor, a relative accident risk factor for the computer instructions (and/or associated artificial intelligence) based upon the ability of the computer instructions (and/or associated artificial intelligence) to make automated or semi-automated driving decisions for a vehicle and avoid crashes; (4) determining or updating, via the processor, an automobile insurance policy for an individual vehicle with the autonomous or semi-autonomous driving technology based upon the relative accident risk factor assigned to the computer instructions (and/or associated artificial intelligence); and/or (5) presenting on a display (or otherwise communicating) all or a portion of the automobile insurance policy, such as a monthly premium, to an owner or operator of the individual vehicle, or other existing or potential customer, for purchase, approval, or acceptance by the owner or operator of the individual vehicle, or other customer. The computer instructions may direct the processor to

perform autonomous or semi-autonomous vehicle functionality and be stored on non-transitory computer media, medium, or memory. The method may include additional, fewer, or alternate actions, including those discussed elsewhere herein.

[0141] The autonomous or semi-autonomous vehicle functionality that is supported by the computer instructions and/or associated artificial intelligence may include and/or be related to: automatic or semi-automatic steering; automatic or semi-automatic acceleration and/or braking; automatic or semi-automatic blind spot monitoring; automatic or semi-automatic collision warning; adaptive cruise control; and/or automatic or semi-automatic parking assistance. Additionally or alternatively, the autonomous or semi-autonomous vehicle functionality may include and/or be related to: driver alertness or responsive monitoring; pedestrian detection; artificial intelligence and/or back-up systems; navigation or GPS-related systems; security and/or anti-hacking measures; theft prevention systems; and/or systems that may remotely locate stolen vehicles, such as via GPS coordinates.

[0142] The determination of the relative accident risk factor for the computer instructions and/or associated artificial intelligence may consider, or take into account, previous, future, or potential accident-related factors, including: point of impact; type of road; time of day; weather conditions; type or length of trip; vehicle style; vehicle-to-vehicle wireless communication; vehicle-to-infrastructure wireless communication; and/or other factors, including those discussed elsewhere herein.

[0143] The method may further include adjusting an insurance premium, discount, reward, or other item associated with an insurance policy based upon the relative accident risk factor assigned to the autonomous or semi-autonomous driving technology, the computer instructions, and/or associated artificial intelligence. Additionally or alternatively, insurance rates, ratings, special offers, points, programs, refunds, claims, claim amounts, etc. may be adjusted based upon the relative accident or insurance risk factor assigned to the autonomous or semi-autonomous driving technology, the computer instructions, and/or associated artificial intelligence.

Exemplary Methods of Providing Insurance Coverage

[0144] In one aspect, a computer-implemented method of adjusting or creating an insurance policy may be provided. The method may include: (1) capturing or gathering data, via a processor, to determine an autonomous or semi-autonomous technology or functionality associated with a specific vehicle; (2) comparing the received data, via the processor, to a stored baseline of vehicle data created from (a) actual accident data involving automobiles equipped with the autonomous or semi-autonomous technology or functionality, and/or (b) autonomous or semi-autonomous vehicle testing; (3) identifying (or assessing) accident or collision risk, via the processor, based upon an ability of the autonomous or semi-autonomous technology or functionality associated with the specific vehicle to make driving decisions and/or avoid or mitigate crashes; (4) adjusting or creating an insurance policy, via the processor, based upon the accident or collision risk identified that is based upon the ability of the autonomous or semi-autonomous technology or functionality associated with the specific vehicle; and/or (5) presenting on a display screen, or otherwise providing or

communicating, all or a portion of (such as a monthly premium or discount) the insurance policy adjusted or created to a potential or existing customer, or an owner or operator of the specific vehicle equipped with the autonomous or semi-autonomous technology or functionality, for review, acceptance, and/or approval. The method may include additional, fewer, or alternative steps or actions, including those discussed elsewhere herein.

[0145] For instance, the method may include evaluating, via the processor, an effectiveness of the autonomous or semi-autonomous technology or functionality, and/or an associated artificial intelligence, in a test environment, and/or using real driving experience or information.

[0146] The identification (or assessment) of accident or collision risk performed by the processor may be dependent upon the extent of control and/or decision making that is assumed by the specific vehicle equipped with the autonomous or semi-autonomous technology or functionality, rather than the human driver. Additionally or alternatively, the identification (or assessment) of accident or collision risk may be dependent upon (a) the ability of the specific vehicle to use external information (such as vehicle-to-vehicle, vehicle-to-infrastructure, and/or infrastructure-to-vehicle wireless communication) to make driving decisions, and/or (b) the availability of such external information, such as may be determined by a geographical region (urban or rural) associated with the specific vehicle or vehicle owner.

[0147] Information regarding the autonomous or semi-autonomous technology or functionality associated with the specific vehicle, including factory-installed hardware and/or versions of computer instructions, may be wirelessly transmitted to a remote server associated with an insurance provider and/or other third party for analysis. The method may include remotely monitoring an amount or percentage of usage of the autonomous or semi-autonomous technology or functionality by the specific vehicle, and based upon such amount or percentage of usage, (a) providing feedback to the driver and/or insurance provider via wireless communication, and/or (b) adjusting insurance policies or premiums.

[0148] In another aspect, another computer-implemented method of adjusting or creating an automobile insurance policy may be provided. The method may include: (1) determining, via a processor, a relationship between an autonomous or semi-autonomous vehicle functionality and a likelihood of a vehicle collision or accident; (2) adjusting or creating, via a processor, an automobile insurance policy for a vehicle equipped with the autonomous or semi-autonomous vehicle functionality based upon the relationship, wherein adjusting or creating the insurance policy may include adjusting or creating an insurance premium, discount, or reward for an existing or new customer; and/or (3) presenting on a display screen, or otherwise communicating, all or a portion of the automobile insurance policy adjusted or created for the vehicle equipped with the autonomous or semi-autonomous vehicle functionality to an existing or potential customer, or an owner or operator of the vehicle for review, approval, and/or acceptance. The method may include additional, fewer, or alternative actions, including those discussed elsewhere herein.

[0149] For instance, the method may include determining a risk factor associated with the relationship between the autonomous or semi-autonomous vehicle functionality and the likelihood of a vehicle collision or accident. The likelihood of a vehicle collision or accident associated with the

autonomous or semi-autonomous vehicle functionality may be stored in a risk assessment database or model. The risk assessment database or model may be built from (a) actual accident information involving vehicles having the autonomous or semi-autonomous vehicle functionality, and/or (b) testing of vehicles having the autonomous or semi-autonomous vehicle functionality and/or resulting test data. The risk assessment database or model may account for types of accidents, roads, and/or vehicles; weather conditions; and/or other factors, including those discussed elsewhere herein.

[0150] In another aspect, another computer-implemented method of adjusting or generating an insurance policy may be provided. The method may include: (1) receiving an autonomous or semi-autonomous vehicle functionality associated with a vehicle via a processor; (2) adjusting or generating, via the processor, an automobile insurance policy for the vehicle associated with the autonomous or semi-autonomous vehicle functionality based upon historical or actual accident information, and/or test information associated with the autonomous or semi-autonomous vehicle functionality; and/or (3) presenting on a display screen, or otherwise communicating, the adjusted or generated automobile insurance policy (for the vehicle associated with the autonomous or semi-autonomous vehicle functionality) or portions thereof for review, acceptance, and/or approval by an existing or potential customer, or an owner or operator of the vehicle. The adjusting or generating the automobile insurance policy may include calculating an automobile insurance premium, discount, or reward based upon actual accident or test information associated with the autonomous or semi-autonomous vehicle functionality. The method may also include: (a) monitoring, or gathering data associated with, an amount of usage (or a percentage of usage) of the autonomous or semi-autonomous vehicle functionality, and/or (b) updating, via the processor, the automobile insurance policy, or an associated premium or discount, based upon the amount of usage (or the percentage of usage) of the autonomous or semi-autonomous vehicle functionality. The method may include additional, fewer, or alternate actions, including those discussed elsewhere herein.

[0151] In another aspect, another computer-implemented method of generating or updating an insurance policy may be provided. The method may include: (1) developing an accident risk model associated with a likelihood that a vehicle having autonomous or semi-autonomous vehicle functionality or technology will be involved in a vehicle accident or collision, the accident risk model may comprise a database, table, or other data structure, the accident risk model and/or the likelihood that the vehicle having autonomous or semi-autonomous vehicle functionality or technology will be involved in a vehicle accident or collision may be determined from (i) actual accident information involving vehicles having the autonomous or semi-autonomous vehicle functionality or technology, and/or (ii) test data developed from testing vehicles having the autonomous or semi-autonomous vehicle functionality or technology; (2) generating or updating an automobile insurance policy, via a processor, for a vehicle equipped with the autonomous or semi-autonomous vehicle functionality or technology based upon the accident risk model; and/or (3) presenting on a display screen, or otherwise communicating, all or a portion of the automobile insurance policy generated or updated to an existing or potential customer, or an owner or operator of the vehicle

equipped with the autonomous or semi-autonomous vehicle functionality or technology for review, approval, and/or acceptance. The autonomous or semi-autonomous vehicle functionality or technology may involve vehicle self-braking or self-steering functionality. Generating or updating the automobile insurance policy may include calculating an automobile insurance premium, discount, and/or reward based upon the autonomous or semi-autonomous vehicle functionality or technology and/or the accident risk model. The method may include additional, fewer, or alternate actions, including those discussed elsewhere herein.

[0152] In another aspect, another computer-implemented method of generating or updating an insurance policy may be provided. The method may include (a) developing an accident risk model associated with (1) an autonomous or semi-autonomous vehicle functionality, and/or (2) a likelihood of a vehicle accident or collision. The accident risk model may include a database, table, and/or other data structure. The likelihood of the vehicle accident or collision may comprise a likelihood of an actual or potential vehicle accident involving a vehicle having the autonomous or semi-autonomous functionality determined or developed from analysis of (i) actual accident information involving vehicles having the autonomous or semi-autonomous functionality, and/or (ii) test data developed from testing vehicles having the autonomous or semi-autonomous functionality. The method may include (b) generating or updating an automobile insurance policy, via a processor, for a vehicle equipped with the autonomous or semi-autonomous vehicle functionality based upon the accident risk model; and/or (c) presenting on a display, or otherwise communicating, all or a portion of the automobile insurance policy generated or updated for review and/or acceptance by an existing or potential customer, or an owner or operator of the vehicle equipped with the autonomous or semi-autonomous vehicle functionality. The method may include additional, fewer, or alternate actions or steps, including those discussed elsewhere herein.

[0153] In another aspect, a computer-implemented method of adjusting or creating an insurance policy may be provided. The method may include (a) estimating an accident risk factor for a vehicle having an autonomous or semi-autonomous vehicle functionality based upon (1) a specific, or a type of, autonomous or semi-autonomous vehicle functionality, and/or (2) actual accident data or vehicle testing data associated with vehicles having autonomous or semi-autonomous vehicle functionality; (b) adjusting or creating an automobile insurance policy for an individual vehicle equipped with the autonomous or semi-autonomous vehicle functionality based upon the accident risk factor associated with the autonomous or semi-autonomous vehicle functionality; and/or (c) presenting on a display, or otherwise communicating, all or a portion of the automobile insurance policy adjusted or created based upon the accident risk factor associated with the autonomous or semi-autonomous vehicle functionality to an existing or potential customer, or an owner or operator of the individual vehicle equipped with the autonomous or semi-autonomous vehicle functionality for review, approval, or acceptance. The method may include additional, fewer, or alternate actions, including those discussed elsewhere herein.

[0154] In another aspect, a computer-implemented method of adjusting or generating an automobile insurance policy may be provided. The method may include: (1) collecting

data, via a processor, related to (a) vehicle accidents involving vehicles having an autonomous or semi-autonomous vehicle functionality or technology, and/or (b) testing data associated with such vehicles; (2) based upon the data collected, identifying, via the processor, a likelihood that a vehicle employing a specific autonomous or semi-autonomous vehicle functionality or technology will be involved in a vehicle accident or collision; (3) receiving, via the processor, an insurance-related request for a vehicle equipped with the specific autonomous or semi-autonomous vehicle functionality or technology; (4) adjusting or generating, via the processor, an automobile insurance policy for the vehicle equipped with the specific autonomous or semi-autonomous vehicle functionality or technology based upon the identified likelihood that the vehicle employing the specific autonomous or semi-autonomous vehicle functionality or technology will be involved in a vehicle accident or collision; and/or (5) presenting on a display, or otherwise communicating, all or a portion of the automobile insurance policy adjusted or generated for the vehicle equipped with the specific autonomous or semi-autonomous vehicle functionality or technology for review, approval, or acceptance by an existing or potential customer, or an owner or operator of the vehicle equipped with the specific autonomous or semi-autonomous vehicle functionality or technology. The method may include additional, fewer, or alternate actions, including those discussed elsewhere herein.

[0155] For the methods and embodiments discussed directly above, and elsewhere herein, the autonomous or semi-autonomous technology or functionality may include and/or be related to: automatic or semi-automatic steering; automatic or semi-automatic acceleration and/or braking; automatic or semi-automatic blind spot monitoring; automatic or semi-automatic collision warning; adaptive cruise control; and/or automatic or semi-automatic parking assistance. Additionally or alternatively, the autonomous or semi-autonomous technology or functionality may include and/or be related to: driver alertness or responsive monitoring; pedestrian detection; artificial intelligence and/or back-up systems; navigation or GPS-related systems; security and/or anti-hacking measures; and/or theft prevention systems.

Exemplary V2V Wireless Communication Functionality

[0156] In one aspect, a computer-implemented method of generating or adjusting an automobile insurance policy may be provided. The method may include: (1) determining a likelihood that vehicles employing a vehicle-to-vehicle (V2V) wireless communication-based autonomous or semi-autonomous vehicle functionality or technology will be involved in an accident or collision; (2) receiving data or a request for automobile insurance, via a processor, indicating that a specific vehicle is equipped with the vehicle-to-vehicle (V2V) wireless communication-based autonomous or semi-autonomous vehicle functionality or technology; (3) generating or adjusting an automobile insurance policy for the specific vehicle, via the processor, based upon the likelihood that vehicles employing the V2V wireless communication-based autonomous or semi-autonomous vehicle functionality or technology will be involved in an accident or collision; and/or (4) presenting on a display, or otherwise communicating, a portion or all of the automobile insurance policy generated or adjusted for the specific vehicle equipped with the V2V wireless communication-based autonomous or semi-autonomous vehicle functionality or

technology for review, approval, or acceptance by an existing or potential customer, or an owner or operator of the vehicle that is equipped with the V2V wireless communication-based autonomous or semi-autonomous vehicle functionality or technology.

[0157] The method may further include: monitoring and/or collecting, via the processor, data associated with an amount of usage (or percentage of usage) by the specific vehicle of the V2V wireless communication-based autonomous or semi-autonomous vehicle functionality or technology; adjusting, via the processor, the insurance policy (such as insurance premium, discount, reward, etc.) based upon the amount of usage (or percentage of usage) by the specific vehicle of the V2V wireless communication-based autonomous or semi-autonomous vehicle functionality or technology; and/or presenting or communicating, via the processor, the adjustment to the insurance policy based upon the amount of usage (or percentage of usage) by the specific vehicle of the V2V wireless communication-based autonomous or semi-autonomous vehicle functionality or technology to the vehicle owner or operator, or an existing or potential customer. The method may include additional, fewer, or alternate actions, including those discussed elsewhere herein.

[0158] For the method discussed directly above, the V2V wireless communication-based autonomous or semi-autonomous vehicle technology or functionality may include and/or be related to: automatic or semi-automatic steering; automatic or semi-automatic acceleration and/or braking; automatic or semi-automatic blind spot monitoring; automatic or semi-automatic collision warning; adaptive cruise control; and/or automatic or semi-automatic parking assistance. Additionally or alternatively, the autonomous or semi-autonomous technology or functionality may include and/or be related to: driver alertness or responsive monitoring; pedestrian detection; artificial intelligence and/or back-up systems; navigation or GPS-related systems; security and/or anti-hacking measures; and/or theft prevention systems.

[0159] In another aspect, another computer-implemented method of generating or adjusting an automobile insurance policy may be provided. The method may include (1) receiving data or a request for automobile insurance, via a processor, indicating that a vehicle is equipped with a vehicle-to-vehicle (V2V) wireless communication-based autonomous or semi-autonomous vehicle functionality or technology. The V2V wireless communication-based autonomous or semi-autonomous vehicle functionality or technology may enable the vehicle to automatically self-brake and/or automatically self-steer based upon a wireless communication received from a second vehicle. The wireless communication may indicate that the second vehicle is braking or maneuvering. The method may include (2) generating or adjusting an automobile insurance policy for the specific vehicle, via the processor, based upon the V2V wireless communication-based autonomous or semi-autonomous vehicle functionality or technology of the vehicle; and/or (3) presenting on a display, or otherwise communicating, a portion or all of the automobile insurance policy generated or adjusted for the vehicle equipped with the V2V wireless communication-based autonomous or semi-autonomous vehicle functionality or technology for review, approval, or acceptance by an existing or potential customer, or an owner or operator of the vehicle that is equipped with

the V2V wireless communication-based autonomous or semi-autonomous vehicle functionality or technology.

[0160] The method may also include: determining a likelihood that vehicles employing the vehicle-to-vehicle (V2V) wireless communication-based autonomous or semi-autonomous vehicle functionality or technology will be involved in an accident or collision; and/or generating or adjusting the automobile insurance policy for the specific vehicle is based at least in part on the likelihood of accident or collision determined. The method may include additional, fewer, or alternate actions, including those discussed elsewhere herein.

Exemplary Wireless Communication Functionality

[0161] In one aspect, a computer-implemented method of generating or adjusting an automobile insurance policy may be provided. The method may include: (1) determining a likelihood that vehicles employing a wireless communication-based autonomous or semi-autonomous vehicle functionality or technology will be involved in an automobile accident or collision, the wireless communication-based autonomous or semi-autonomous vehicle functionality or technology includes wireless communication capability between (a) individual vehicles, and (b) roadside or other travel-related infrastructure; (2) receiving data or a request for automobile insurance, via a processor, indicating that a specific vehicle is equipped with the wireless communication-based autonomous or semi-autonomous vehicle functionality or technology; (3) generating or adjusting an automobile insurance policy for the specific vehicle, via the processor, based upon the likelihood that vehicles employing the wireless communication-based autonomous or semi-autonomous vehicle functionality or technology will be involved in automobile accident or collisions; and/or (4) presenting on a display, or otherwise communicating, all or a portion of the automobile insurance policy generated or adjusted for the vehicle equipped with the wireless communication-based autonomous or semi-autonomous vehicle functionality or technology for review, approval, or acceptance by an existing or potential customer, or an owner or operator of the vehicle.

[0162] The roadside or travel-related infrastructure may be a smart traffic light, smart stop sign, smart railroad crossing indicator, smart street sign, smart road or highway marker, smart tollbooth, Wi-Fi hotspot, superspot, and/or other vehicle-to-infrastructure (V2I) component with two-way wireless communication to and from the vehicle, and/or data download availability.

[0163] The method may further include: monitoring and/or collecting data associated with, via the processor, an amount of usage (or percentage of usage) of the wireless communication-based autonomous or semi-autonomous vehicle functionality or technology by the specific vehicle; adjusting, via the processor, the insurance policy (such as an insurance premium, discount, reward, etc.) based upon the amount of usage (or percentage of usage) by the specific vehicle of the wireless communication-based autonomous or semi-autonomous vehicle functionality or technology; and/or presenting or communicating, via the processor, the adjustment to the insurance policy based upon the amount of usage (or percentage of usage) by the specific vehicle of the wireless communication-based autonomous or semi-autonomous vehicle functionality or technology to the vehicle owner or operator, and/or an existing or potential customer.

The method may include additional, fewer, or alternate actions, including those discussed elsewhere herein.

[0164] For the method discussed directly above, the wireless communication-based autonomous or semi-autonomous vehicle technology or functionality may include and/or be related to: automatic or semi-automatic steering; automatic or semi-automatic acceleration and/or braking; automatic or semi-automatic blind spot monitoring; automatic or semi-automatic collision warning; adaptive cruise control; and/or automatic or semi-automatic parking assistance. Additionally or alternatively, the autonomous or semi-autonomous technology or functionality may include and/or be related to: driver alertness or responsive monitoring; pedestrian detection; artificial intelligence and/or back-up systems; navigation or GPS-related systems; security and/or anti-hacking measures; and/or theft prevention systems.

[0165] In another aspect, a computer-implemented method of generating or adjusting an automobile insurance policy may be provided. The method may include (1) receiving data or a request for automobile insurance, via a processor, indicating that a vehicle is equipped with a wireless communication-based autonomous or semi-autonomous vehicle functionality or technology. The wireless communication-based autonomous or semi-autonomous vehicle functionality or technology may include wireless communication capability between (a) the vehicle, and (b) roadside or other travel-related infrastructure, and may enable the vehicle to automatically self-brake and/or automatically self-steer based upon wireless communication received from the roadside or travel-related infrastructure. The wireless communication transmitted by the roadside or other travel-related infrastructure to the vehicle may indicate that the vehicle should brake or maneuver. The method may include (2) generating or adjusting an automobile insurance policy for the vehicle, via the processor, based upon the wireless communication-based autonomous or semi-autonomous vehicle functionality or technology of the vehicle; and/or (3) presenting on a display, or otherwise communicating, all or a portion of the automobile insurance policy generated or adjusted for the vehicle equipped with the wireless communication-based autonomous or semi-autonomous vehicle functionality or technology for review, approval, or acceptance by an existing or potential customer, or an owner or operator of the vehicle. The method may include additional, fewer, or alternate actions, including those discussed elsewhere herein.

Exemplary Functionality

[0166] In some aspects, the autonomous or semi-autonomous technology or functionality may involve a vehicle self-braking functionality and/or a vehicle self-steering functionality. The autonomous or semi-autonomous technology or functionality may perform one or more of the following functions: steering; accelerating; braking; monitoring blind spots; presenting a collision warning; adaptive cruise control; parking; driver alertness monitoring; driver responsiveness monitoring; pedestrian detection; artificial intelligence; a back-up system; a navigation system; a positioning system; a security system; an anti-hacking measure; a theft prevention system; and/or remote vehicle location determination.

[0167] Additionally or alternatively, the types of autonomous or semi-autonomous vehicle-related functionality or technology that may be used with the present embodiments

to replace human driver actions may include and/or be related to the following types of functionality: (a) fully autonomous (driverless); (b) limited driver control; (c) vehicle-to-vehicle (V2V) wireless communication; (d) vehicle-to-infrastructure and/or vice versa) wireless communication; (e) automatic or semi-automatic steering; (f) automatic or semi-automatic acceleration; (g) automatic or semi-automatic braking; (h) automatic or semi-automatic blind spot monitoring; (i) automatic or semi-automatic collision warning; (j) adaptive cruise control; (k) automatic or semi-automatic parking/parking assistance; (l) automatic or semi-automatic collision preparation (windows roll up, seat adjusts upright, brakes pre-charge, etc.); (m) driver acuity/alertness monitoring; (n) pedestrian detection; (o) autonomous or semi-autonomous backup systems; (p) road mapping systems; (q) software security and anti-hacking measures; (r) theft prevention/automatic return; (s) automatic or semi-automatic driving without occupants; and/or other functionality.

[0168] The systems and computer-implemented methods may monitor settings associated with each autonomous or semi-autonomous technology or functionality, such as via one or more local or remote processors and/or sensors. For instance, each autonomous or semi-autonomous system mounted on a vehicle may include a controller (or processor and/or clock) in wired or wireless communication with a dedicated sensor (and/or clock) that determines a setting for each autonomous or semi-autonomous system and when that setting was in a given position, and the amount of time and/or miles that the autonomous or semi-autonomous system was engaged or disengaged (or otherwise set a given condition or setting) may be compared with the overall amount of time or miles that the vehicle was driven, operated, or otherwise traveled on the road for a given period of time (such as 6 months).

[0169] For instance, a dedicated sensor for a cruise (or speed) control system may determine a total amount of time or miles that the cruise control system was employed or not employed, and such sensor may determine a setting or speed that the cruise control system was set at (e.g., 70 miles per hour for interstate highway travel). The vehicle controller may include a processor that tracks the overall vehicle time or mileage of usage, either in autonomous, semi-autonomous, or manual control operation.

[0170] A percentage of time that the vehicle was operated in autonomous, semi-autonomous, or manual mode may be calculated. Insurance discounts may be provided to the insured or vehicle owner based upon an overall risk level assessment of the vehicle operation. For instance, an insurance discount may be generated based upon the risk profile of the autonomous or semi-autonomous system, and/or the risk profile of the driver (such as a risk profile of the driver determined from telematics data), and the amount of time or mileages each was in control of, or driving the vehicle (whether the human vehicle owner, or the vehicle itself (e.g., autonomous or semi-autonomous system)) and under what weather, traffic, or road conditions each driver (whether human or machine) was driving.

[0171] As another example, a collision avoidance system may include a processor and/or a dedicated sensor that determines an amount of time or miles driven that the collision avoidance system was engaged or disengaged. The amount of time or miles that the system was engaged (or disengaged) may be compared with a total time or miles that

the vehicle was driven or operated (such as determined from a vehicle controller processor and/or clock). Assuming that the collision avoidance system reduces the likelihood of a vehicle crash, a usage-based insurance discount may be generated for the vehicle owner based upon an amount of time or miles that they have utilized, or not utilized, the collision avoidance system (and/or a setting thereof).

[0172] The usage of the autonomous and/or semi-autonomous features and technologies may be monitored in real time locally, such as via vehicle control system and/or a mobile device (e.g., smart phone, tablet, wearable electronics, smart watch, etc.) configured with a Telematics Application (or “App”) capable of gathering various types of telematics data (vehicle speed, location, cornering, braking, acceleration, image and audio data, etc.). The vehicle control system or mobile device may be configured to transmit the data gathered with respect to autonomous or semi-autonomous system operation, via wireless communication or data transmission, to an insurance provider remote server. The remote server may update usage-based auto insurance discounts based upon the data (such as the data indicating the amount and/or frequency of use of the autonomous or semi-autonomous systems, and at which settings those systems are used by the vehicle owner).

[0173] One autonomous or semi-autonomous feature may include capabilities related to broadcasting and/or receiving telematics and/or other data to and/or from other vehicles, smart infrastructure, or remote servers. For instance, vehicle controllers or mobile devices may be configured to collect telematics and/or other data and then transmit that data to nearby vehicles or smart infrastructure via wireless communication or data transmission. That data may indicate travel issues, vehicle crashes, congestion, bad weather, and/or road construction that should be avoided. Using the data, the receiving vehicles may re-route around the problem areas, and/or the smart infrastructure may estimate and transmit alternate routes to smart vehicles or may generate routing recommendations.

[0174] Additionally, the vehicle controllers or mobile devices may receive a broadcast of telematics or other data indicative of travel events, such as from other vehicles, other mobile devices, or smart infrastructure. The vehicle controllers or mobile devices may generate alerts based upon the data received indicative of approaching travel events, and/or the vehicle controllers or mobile devices may generate alternate routes avoiding the travel events and/or send an alternate route to an autonomous vehicle system driving the vehicle to automatically re-route the vehicle around the travel event.

[0175] The telematics and/or other data collected by the vehicle controller or mobile device may indicate the amount of time or mileage of vehicle usage that the broadcasting and/or receiving functionality associated with receiving telematics data from other vehicles indicative of travel events is employed.

[0176] Various types of sensors (such as cameras and audio recorders) may collect various types of data (e.g., audio, image, speed, etc.) for transmission to remote servers for analysis, such as analysis of fault determination after a vehicle crash. Data may also be collected during testing from vehicle-mounted sensors, including image, audio, speeding, accelerometers, or braking sensors.

[0177] The insurance discounts may be usage-based and based upon a setting of autonomous or semi-autonomous

system during vehicle road operation (such as engaged or disengaged, on or off, high/medium/low, etc.). For instance, an amount of time (or miles) that the vehicle is operated on the road with the system engaged may be compared with an amount of time (or miles) the vehicle is operated on the road with the system disengaged. A percentage of vehicle operation with the system engaged may be determined, as well as percentage of vehicle operation with the insured (or human driver) in control of, or driving, the vehicle. An insurance discount may be generated based upon (1) the risk profile of the system engaged and the amount of time (or miles) that that system is engaged; and (2) the risk profile of the insured and the amount of time (or miles) that vehicle is operated or driven by the insured (as opposed to the system), or otherwise operated without that specific autonomous or semi-autonomous system engaged.

[0178] Additionally or alternatively, vehicle, mobile device, and/or telematics (including video, audio, and/or GPS) data may be received from a vehicle driver or owner and may be analyzed with their permission and consent to determine a typical time or mileage that they drive in various weather, traffic, or road conditions for a given period of time. For instance, video or audio data from the vehicle may be analyzed to determine vehicle operation during weather or road conditions. Telematics or GPS speed data may be analyzed to determine traffic conditions. Also, the setting for the one or more autonomous operation features (and/or systems) may be determined (such as engaged or disengaged) during each of the various types of weather, traffic, or road conditions (such as congested, light or heavy traffic, bumper-to-bumper traffic, city or rural driving, city street versus highway driving, ice or snow, rain or wind, road construction, etc.). The autonomous operation feature may be rated for how well it, or a version or model thereof, performs during each of the various types of weather, traffic, or road conditions.

[0179] Further, future or anticipated operation of the vehicle by the vehicle operator each of the various types of weather, traffic, or road conditions may be estimated from past vehicle operation in such operations. Based upon the amount of time or miles that the vehicle owner or operator is expected to drive the vehicle during various weather or road conditions in the future (which may take into account predicted weather, weather seasons (winter versus summer, fall versus winter, etc.), and/or weather forecasts) for a given time period, and/or the amount of time or miles that the autonomous feature or features are anticipated to be engaged or disengaged, a total risk may be calculated, and an insurance discount may be generated that is more reflective of actual risk of human and machine driving during various weather, traffic, and/or road conditions.

Exemplary Computer Systems

[0180] In one aspect, a computer system for determining risk and pricing insurance for a vehicle having one or more autonomous operation features for controlling the vehicle may be provided. The computer system may include one or more processors or transceivers configured to: (1) determine a risk profile associated with operation of the vehicle that includes a plurality of risk levels associated with operation of the vehicle (i) under a plurality of weather and road operating conditions with the one or more autonomous operation features of the vehicle engaged, and/or (ii) under the plurality of weather and road operating conditions with

the one or more autonomous operation features of the vehicle disengaged; (2) receive sensor data regarding previous use, or engagement and disengagement, of the one or more autonomous operation features of the vehicle by a vehicle operator during the plurality of weather and road conditions, via wireless communication or data transmission transmitted from a vehicle-mounted transceiver or a mobile device of the vehicle operator; (3) determine a plurality of expected use levels of the vehicle during the plurality of weather and road operating conditions, wherein the expected use levels indicate whether or not the vehicle operator is expected to engage or disengage the one or more autonomous operation features during each of the plurality of weather and road operating conditions as determined from processor analysis of the sensor data received; and/or (4) determine a total risk level associated with overall operation of the vehicle based at least in part upon (a) the determined risk profile, and (b) the determined expected use levels that indicate whether or not the vehicle operator is expected to engage or disengage the one or more autonomous operation features during each of the plurality of weather and road operating conditions to facilitate more accurate risk assessment and auto insurance pricing.

[0181] The one or more processors or transceivers may be configured to: (1) receive data indicating an actual amount of time or miles that the vehicle is operated in each of the plurality of weather and road conditions with each of the one or more autonomous operation features engaged or disengaged, via wireless communication or data transmission transmitted from a vehicle-mounted transceiver or a mobile device of the vehicle operator; (2) estimate future usage or operation of the vehicle, either by time or mileage, during each of the plurality of weather and road conditions and with each of the one or more autonomous operation features engaged or disengaged based upon the data indicating the actual amount of time or mile usage of the vehicle in each of the plurality of weather and road conditions and with each of the one or more autonomous operation features engaged or disengaged; and/or (3) adjust the total risk level for the vehicle based upon (i) the determined risk profile, (ii) the determined expected use levels, and (iii) the estimated future usage or operation of the vehicle, either by time or mileage, the vehicle is predicted to be operated in each of the plurality of weather and road conditions with each of the one or more autonomous operation features engaged or disengaged.

[0182] The one or more processors or transceivers may be further configured to: (a) receive data indicating an amount of time or miles that the vehicle is operated in each of the plurality of weather and road conditions, via wireless communication or data transmission transmitted from a vehicle-mounted transceiver or a mobile device of the vehicle operator; (b) estimate future usage or operation of the vehicle, either by time or mileage, during each of the plurality of weather and road conditions; and/or (c) adjust the total risk level for the vehicle based upon (1) the determined risk profile, (2) the determined expected use levels, and (3) the amount of time or miles that the vehicle is estimated to be operated in each of the plurality of weather and road conditions.

[0183] The risk profile associated with autonomous operation of the vehicle may be based at least in part upon test result data generated from test units corresponding to the one or more autonomous operation features. The test results may include responses of the test units to test inputs corre-

sponding to test scenarios, the test scenarios including vehicle operation with an autonomous feature engaged during each of the plurality of weather and road conditions; and the test results may be generated and recorded by the test units disposed within one or more test vehicles in response to sensor data from a plurality of sensors, and/or video recording devices, within the one or more test vehicles.

[0184] The risk profile associated with autonomous operation of the vehicle may be based at least in part upon actual losses associated with insurance policies covering a plurality of other vehicles having at least one of the one or more autonomous operation features, the actual losses incurred through vehicle operation in each of the plurality of weather and road conditions. The one or more processors or transceivers may be further configured to: determine types of one or more sensors installed in the vehicle based upon the sensor data received from vehicle; and/or adjust the total risk level associated with autonomous operation of the vehicle based at least in part upon the types of sensors installed in the vehicle.

[0185] The sensor data regarding the one or more autonomous operation features may include a version of autonomous operation feature control software that is currently installed on the vehicle or in the autonomous operation feature system mounted on the vehicle. The one or more processors or transceivers may be further configured to: receive information regarding the type and version of the one or more autonomous operation features and types of sensors presently installed in the vehicle after vehicle maintenance; and/or update the total risk level associated with autonomous operation of the vehicle based upon the type and version of the one or more autonomous operation features and the types of sensors presently installed in the vehicle.

[0186] The autonomous operation feature may include vehicle-to-vehicle (V2V) wireless communication capability, and the one or more processors or transceiver may be configured to: receive telematics data generated or broadcast from other vehicles; and/or generate and display alternate routes based upon the telematics data received to facilitate safer vehicle travel and avoidance of bad weather, traffic, or road conditions.

[0187] In another aspect, a computer system for determining risk and pricing insurance for a vehicle having one or more autonomous operation features for controlling the vehicle may be provided. The system may include one or more processors or transceivers configured to: (1) determine a risk profile associated with operation of the vehicle that includes a plurality of risk levels associated with operation of the vehicle (i) under a plurality of weather and road operating conditions with the one or more autonomous operation features of the vehicle engaged, and (ii) under the plurality of weather and road operating conditions with the one or more autonomous operation features of the vehicle disengaged; (2) receive sensor data regarding previous use, or engagement and disengagement, of the one or more autonomous operation features of the vehicle by a vehicle operator during the plurality of weather and road conditions, via wireless communication or data transmission transmitted from a vehicle-mounted transceiver or a mobile device of the vehicle operator; (3) determine from analysis of the sensor data received a plurality of expected use levels of the vehicle during the plurality of weather and road operating conditions, wherein the expected use levels indicate whether

or not the vehicle operator is expected to engage or disengage the one or more autonomous operation features during each of the plurality of weather and road operating conditions; (4) determine from analysis of the sensor data received, or from analysis of other vehicle or telematics data received from the vehicle or mobile device, an average amount of time or miles that the vehicle operator operates the vehicle during each of the plurality of weather and road operating conditions for a given period of time; and/or (5) determine a total risk level associated with overall operation of the vehicle based at least in part upon (a) the determined risk profile, (b) the determined expected use levels that indicate whether or not the vehicle operator is expected to engage or disengage the one or more autonomous operation features during each of the plurality of weather and road operating conditions, and (c) the average amount of time or miles that the vehicle operator operates the vehicle during each of the plurality of weather and road operating conditions for a given period of time to facilitate more accurate risk assessment and auto insurance pricing. The foregoing systems may include additional, less, or alternate functionality, including that discussed elsewhere herein.

Exemplary Computer-Implemented Methods

[0188] In one aspect, a computer-implemented method for determining risk and pricing insurance for a vehicle having one or more autonomous operation features for controlling the vehicle may be provided. The method may include (1) determining, by one or more processors, a risk profile associated with operation of the vehicle that includes a plurality of risk levels associated with operation of the vehicle (i) under a plurality of weather and road operating conditions with the one or more autonomous operation features of the vehicle engaged, and (ii) under the plurality of weather and road operating conditions with the one or more autonomous operation features of the vehicle disengaged; (2) receiving, at the one or more processors or an associated transceiver, sensor data regarding previous use, or engagement and disengagement, of the one or more autonomous operation features of the vehicle by a vehicle operator during the plurality of weather and road conditions, via wireless communication or data transmission transmitted from a vehicle-mounted transceiver or a mobile device of the vehicle operator; (3) determining, by the one or more processors, a plurality of expected use levels of the vehicle during the plurality of weather and road operating conditions, wherein the expected use levels indicate whether or not the vehicle operator is expected to engage or disengage the one or more autonomous operation features during each of the plurality of weather and road operating conditions as determined from processor analysis of the sensor data received; and/or (4) determining, by the one or more processors, a total risk level associated with overall operation of the vehicle based at least in part upon (a) the determined risk profile, and (b) the determined expected use levels that indicate whether or not the vehicle operator is expected to engage or disengage the one or more autonomous operation features during each of the plurality of weather and road operating conditions to facilitate more accurate risk assessment and auto insurance pricing.

[0189] The method may include (i) receiving, at the one or more processors or an associated transceiver, data indicating an amount of time or miles that the vehicle is operated in each of the plurality of weather and road conditions with

each of the one or more autonomous operation features engaged or disengaged, via wireless communication or data transmission transmitted from a vehicle-mounted transceiver or a mobile device of the vehicle operator; (ii) estimating future usage or operation of the vehicle, either by time or mileage, during each of the plurality of weather and road conditions and with each of the one or more autonomous operation features engaged or disengaged; and/or (iii) adjusting, via the one or more processors, the total risk level for the vehicle based upon (1) the determined risk profile, (2) the determined expected use levels, and (3) the amount of time or miles that the vehicle is operated in each of the plurality of weather and road conditions with each of the one or more autonomous operation features engaged or disengaged.

[0190] The method may include (i) receiving, at the one or more processors or an associated transceiver, data indicating an amount of time or miles that the vehicle is operated in each of the plurality of weather and road conditions, via wireless communication or data transmission transmitted from a vehicle-mounted transceiver or a mobile device of the vehicle operator; (2) estimating future usage or operation of the vehicle, either by time or mileage, during each of the plurality of weather and road conditions; and/or (3) adjusting, via the one or more processors, the total risk level for the vehicle based upon (i) the determined risk profile, (ii) the determined expected use levels, and (iii) the amount of time or miles that the vehicle is expected to be operated in the future in each of the plurality of weather and road conditions for a given time period.

[0191] The risk profile associated with autonomous operation of the vehicle may be based at least in part upon test result data generated from test units corresponding to the one or more autonomous operation features; the test results may include responses of the test units to test inputs corresponding to test scenarios, the test scenarios including vehicle operation with an autonomous feature engaged during each of the plurality of weather and road conditions; and/or the test results may be generated and recorded by the test units disposed within one or more test vehicles in response to sensor data from a plurality of sensors, and/or video recording devices, within the one or more test vehicles.

[0192] The risk profile associated with autonomous operation of the vehicle may be based at least in part upon actual losses associated with insurance policies covering a plurality of other vehicles having at least one of the one or more autonomous operation features, the actual losses incurred through vehicle operation in each of the plurality of weather and road conditions.

[0193] The method may include determining, via the one or more processors, types of one or more sensors installed in the vehicle based upon the sensor data received from vehicle; and/or adjusting, via the one or more processors, the total risk level associated with autonomous operation of the vehicle based at least in part upon the types of sensors installed in the vehicle. The sensor data regarding the one or more autonomous operation features may include a version of autonomous operation feature control software that is currently installed on the vehicle or in the autonomous operation feature system mounted on the vehicle.

[0194] The method may include receiving, via the one or more processors or an associated transceiver, information regarding the type and version of the one or more auto-

nous operation features and types of sensors presently installed in the vehicle after vehicle maintenance; and/or updating the total risk level associated with autonomous operation of the vehicle, via the one or more processors, based upon the type and version of the one or more autonomous operation features and the types of sensors presently installed in the vehicle.

[0195] The autonomous operation feature may include vehicle-to-vehicle (V2V) wireless communication capability, and the method may include receiving, via one or more vehicle-mounted processors or associated transceiver, telematics data generated or broadcast from other vehicles; and/or generating and displaying alternate routes, via the one or more vehicle-mounted processors, based upon the telematics data received to facilitate safer vehicle travel and avoidance of bad weather, traffic, or road conditions.

[0196] In another aspect, a computer-implemented method for determining risk and pricing insurance for a vehicle having one or more autonomous operation features for controlling the vehicle may be provided. The method may include (1) determining, by one or more processors, a risk profile associated with operation of the vehicle that includes a plurality of risk levels associated with operation of the vehicle (i) under a plurality of weather and road operating conditions with the one or more autonomous operation features of the vehicle engaged, and (ii) under the plurality of weather and road operating conditions with the one or more autonomous operation features of the vehicle disengaged; (2) receiving, at the one or more processors or an associated transceiver, sensor data regarding previous use, or engagement and disengagement, of the one or more autonomous operation features of the vehicle by a vehicle operator during the plurality of weather and road conditions, via wireless communication or data transmission transmitted from a vehicle-mounted transceiver or a mobile device of the vehicle operator; (3) determining, by the one or more processors, from analysis of the sensor data received a plurality of expected use levels of the vehicle during the plurality of weather and road operating conditions, wherein the expected use levels indicate whether or not the vehicle operator is expected to engage or disengage the one or more autonomous operation features during each of the plurality of weather and road operating conditions; (4) determining, by the one or more processors, from analysis of the sensor data received, or from analysis of other vehicle or telematics data received from the vehicle or mobile device, an average amount of time or miles that the vehicle operator operates the vehicle during each of the plurality of weather and road operating conditions for a given period of time; and/or (5) determining, by the one or more processors, a total risk level associated with overall operation of the vehicle based at least in part upon (a) the determined risk profile, (b) the determined expected use levels that indicate whether or not the vehicle operator is expected to engage or disengage the one or more autonomous operation features during each of the plurality of weather and road operating conditions, and (c) the average amount of time or miles that the vehicle operator operates the vehicle during each of the plurality of weather and road operating conditions for a given period of time to facilitate more accurate risk assessment and auto insurance pricing.

[0197] The foregoing methods may include additional, less, or alternate actions, including those discussed elsewhere herein. The foregoing methods may be implemented

via one or more local or remote processors or transceivers, and/or via computer-executable instructions stored on non-transitory computer-readable media or medium.

Autonomous Vehicle Insurance Policies

[0198] The disclosure herein relates to insurance policies for vehicles with autonomous operation features. Accordingly, as used herein, the term “vehicle” may refer to any of a number of motorized transportation devices. A vehicle may be a car, truck, bus, train, boat, plane, motorcycle, snowmobile, other personal transport devices, etc. Also as used herein, an “autonomous operation feature” of a vehicle means a hardware or software component or system operating within the vehicle to control an aspect of vehicle operation without direct input from a vehicle operator once the autonomous operation feature is enabled or engaged. Autonomous operation features may include semi-autonomous operation features configured to control a part of the operation of the vehicle while the vehicle operator control other aspects of the operation of the vehicle. The term “autonomous vehicle” means a vehicle including at least one autonomous operation feature, including semi-autonomous vehicles. A “fully autonomous vehicle” means a vehicle with one or more autonomous operation features capable of operating the vehicle in the absence of or without operating input from a vehicle operator. Operating input from a vehicle operator excludes selection of a destination or selection of settings relating to the one or more autonomous operation features.

[0199] Additionally, the term “insurance policy” or “vehicle insurance policy,” as used herein, generally refers to a contract between an insurer and an insured. In exchange for payments from the insured, the insurer pays for damages to the insured which are caused by covered perils, acts, or events as specified by the language of the insurance policy. The payments from the insured are generally referred to as “premiums,” and typically are paid by or on behalf of the insured upon purchase of the insurance policy or over time at periodic intervals. Although insurance policy premiums are typically associated with an insurance policy covering a specified period of time, they may likewise be associated with other measures of a duration of an insurance policy, such as a specified distance traveled or a specified number of trips. The amount of the damages payment is generally referred to as a “coverage amount” or a “face amount” of the insurance policy. An insurance policy may remain (or have a status or state of) “in-force” while premium payments are made during the term or length of coverage of the policy as indicated in the policy. An insurance policy may “lapse” (or have a status or state of “lapsed”), for example, when the parameters of the insurance policy have expired, when premium payments are not being paid, when a cash value of a policy falls below an amount specified in the policy, or if the insured or the insurer cancels the policy.

[0200] The terms “insurer,” “insuring party,” and “insurance provider” are used interchangeably herein to generally refer to a party or entity (e.g., a business or other organizational entity) that provides insurance products, e.g., by offering and issuing insurance policies. Typically, but not necessarily, an insurance provider may be an insurance company. The terms “insured,” “insured party,” “policyholder,” and “customer” are used interchangeably herein to refer to a person, party, or entity (e.g., a business or other organizational entity) that is covered by the insurance policy,

e.g., whose insured article or entity is covered by the policy. Typically, a person or customer (or an agent of the person or customer) of an insurance provider fills out an application for an insurance policy. In some cases, the data for an application may be automatically determined or already associated with a potential customer. The application may undergo underwriting to assess the eligibility of the party and/or desired insured article or entity to be covered by the insurance policy, and, in some cases, to determine any specific terms or conditions that are to be associated with the insurance policy, e.g., amount of the premium, riders or exclusions, waivers, and the like. Upon approval by underwriting, acceptance of the applicant to the terms or conditions, and payment of the initial premium, the insurance policy may be in-force, (i.e., the policyholder is enrolled). **[0201]** Although the exemplary embodiments discussed herein relate to automobile insurance policies, it should be appreciated that an insurance provider may offer or provide one or more different types of insurance policies. Other types of insurance policies may include, for example, commercial automobile insurance, inland marine and mobile property insurance, ocean marine insurance, boat insurance, motorcycle insurance, farm vehicle insurance, aircraft or aviation insurance, and other types of insurance products.

Other Matters

[0202] Although the text herein sets forth a detailed description of numerous different embodiments, it should be understood that the legal scope of the invention is defined by the words of the claims set forth at the end of this patent. The detailed description is to be construed as exemplary only and does not describe every possible embodiment, as describing every possible embodiment would be impractical, if not impossible. One could implement numerous alternate embodiments, using either current technology or technology developed after the filing date of this patent, which would still fall within the scope of the claims.

[0203] It should also be understood that, unless a term is expressly defined in this patent using the sentence “As used herein, the term ‘_____’ is hereby defined to mean . . .,” or a similar sentence, there is no intent to limit the meaning of that term, either expressly or by implication, beyond its plain or ordinary meaning, and such term should not be interpreted to be limited in scope based upon any statement made in any section of this patent (other than the language of the claims). To the extent that any term recited in the claims at the end of this disclosure is referred to in this disclosure in a manner consistent with a single meaning, that is done for sake of clarity only so as to not confuse the reader, and it is not intended that such claim term be limited, by implication or otherwise, to that single meaning. Finally, unless a claim element is defined by reciting the word “means” and a function without the recital of any structure, it is not intended that the scope of any claim element be interpreted based upon the application of 35 U.S.C. § 112(f).

[0204] Throughout this specification, plural instances may implement components, operations, or structures described as a single instance. Although individual operations of one or more methods are illustrated and described as separate operations, one or more of the individual operations may be performed concurrently, and nothing requires that the operations be performed in the order illustrated. Structures and functionality presented as separate components in example configurations may be implemented as a combined structure

or component. Similarly, structures and functionality presented as a single component may be implemented as separate components. These and other variations, modifications, additions, and improvements fall within the scope of the subject matter herein.

[0205] Additionally, certain embodiments are described herein as including logic or a number of routines, subroutines, applications, or instructions. These may constitute either software (code embodied on a non-transitory, tangible machine-readable medium) or hardware. In hardware, the routines, etc., are tangible units capable of performing certain operations and may be configured or arranged in a certain manner. In example embodiments, one or more computer systems (e.g., a standalone, client or server computer system) or one or more hardware modules of a computer system (e.g., a processor or a group of processors) may be configured by software (e.g., an application or application portion) as a hardware module that operates to perform certain operations as described herein.

[0206] In various embodiments, a hardware module may be implemented mechanically or electronically. For example, a hardware module may comprise dedicated circuitry or logic that is permanently configured (e.g., as a special-purpose processor, such as a field programmable gate array (FPGA) or an application-specific integrated circuit (ASIC) to perform certain operations. A hardware module may also comprise programmable logic or circuitry (e.g., as encompassed within a general-purpose processor or other programmable processor) that is temporarily configured by software to perform certain operations. It will be appreciated that the decision to implement a hardware module mechanically, in dedicated and permanently configured circuitry, or in temporarily configured circuitry (e.g., configured by software) may be driven by cost and time considerations.

[0207] Accordingly, the term “hardware module” should be understood to encompass a tangible entity, be that an entity that is physically constructed, permanently configured (e.g., hardwired), or temporarily configured (e.g., programmed) to operate in a certain manner or to perform certain operations described herein. Considering embodiments in which hardware modules are temporarily configured (e.g., programmed), each of the hardware modules need not be configured or instantiated at any one instance in time. For example, where the hardware modules comprise a general-purpose processor configured using software, the general-purpose processor may be configured as respective different hardware modules at different times. Software may accordingly configure a processor, for example, to constitute a particular hardware module at one instance of time and to constitute a different hardware module at a different instance of time.

[0208] Hardware modules can provide information to, and receive information from, other hardware modules. Accordingly, the described hardware modules may be regarded as being communicatively coupled. Where multiple of such hardware modules exist contemporaneously, communications may be achieved through signal transmission (e.g., over appropriate circuits and buses) that connect the hardware modules. In embodiments in which multiple hardware modules are configured or instantiated at different times, communications between such hardware modules may be achieved, for example, through the storage and retrieval of information in memory structures to which the multiple

hardware modules have access. For example, one hardware module may perform an operation and store the output of that operation in a memory device to which it is communicatively coupled. A further hardware module may then, at a later time, access the memory device to retrieve and process the stored output. Hardware modules may also initiate communications with input or output devices, and can operate on a resource (e.g., a collection of information).

[0209] The various operations of example methods described herein may be performed, at least partially, by one or more processors that are temporarily configured (e.g., by software) or permanently configured to perform the relevant operations. Whether temporarily or permanently configured, such processors may constitute processor-implemented modules that operate to perform one or more operations or functions. The modules referred to herein may, in some example embodiments, comprise processor-implemented modules.

[0210] Similarly, the methods or routines described herein may be at least partially processor-implemented. For example, at least some of the operations of a method may be performed by one or more processors or processor-implemented hardware modules. The performance of certain of the operations may be distributed among the one or more processors, not only residing within a single machine, but deployed across a number of machines. In some example embodiments, the processor or processors may be located in a single location (e.g., within a home environment, an office environment or as a server farm), while in other embodiments the processors may be distributed across a number of locations.

[0211] The performance of certain of the operations may be distributed among the one or more processors, not only residing within a single machine, but deployed across a number of machines. In some example embodiments, the one or more processors or processor-implemented modules may be located in a single geographic location (e.g., within a home environment, an office environment, or a server farm). In other example embodiments, the one or more processors or processor-implemented modules may be distributed across a number of geographic locations.

[0212] Unless specifically stated otherwise, discussions herein using words such as “processing,” “computing,” “calculating,” “determining,” “presenting,” “displaying,” or the like may refer to actions or processes of a machine (e.g., a computer) that manipulates or transforms data represented as physical (e.g., electronic, magnetic, or optical) quantities within one or more memories (e.g., volatile memory, non-volatile memory, or a combination thereof), registers, or other machine components that receive, store, transmit, or display information.

[0213] As used herein any reference to “one embodiment” or “an embodiment” means that a particular element, feature, structure, or characteristic described in connection with the embodiment may be included in at least one embodiment. The appearances of the phrase “in one embodiment” in various places in the specification are not necessarily all referring to the same embodiment.

[0214] Some embodiments may be described using the expression “coupled” and “connected” along with their derivatives. For example, some embodiments may be described using the term “coupled” to indicate that two or more elements are in direct physical or electrical contact. The term “coupled,” however, may also mean that two or

more elements are not in direct contact with each other, but yet still co-operate or interact with each other. The embodiments are not limited in this context.

[0215] As used herein, the terms “comprises,” “comprising,” “includes,” “including,” “has,” “having” or any other variation thereof, are intended to cover a non-exclusive inclusion. For example, a process, method, article, or apparatus that comprises a list of elements is not necessarily limited to only those elements but may include other elements not expressly listed or inherent to such process, method, article, or apparatus. Further, unless expressly stated to the contrary, “or” refers to an inclusive or and not to an exclusive or. For example, a condition A or B is satisfied by any one of the following: A is true (or present) and B is false (or not present), A is false (or not present) and B is true (or present), and both A and B are true (or present).

[0216] In addition, use of the “a” or “an” are employed to describe elements and components of the embodiments herein. This is done merely for convenience and to give a general sense of the description. This description, and the claims that follow, should be read to include one or at least one and the singular also includes the plural unless it is obvious that it is meant otherwise.

[0217] This detailed description is to be construed as exemplary only and does not describe every possible embodiment, as describing every possible embodiment would be impractical, if not impossible. One could implement numerous alternate embodiments, using either current technology or technology developed after the filing date of this application.

[0218] Upon reading this disclosure, those of skill in the art will appreciate still additional alternative structural and functional designs for system and a method for assigning mobile device data to a vehicle through the disclosed principles herein. Thus, while particular embodiments and applications have been illustrated and described, it is to be understood that the disclosed embodiments are not limited to the precise construction and components disclosed herein. Various modifications, changes and variations, which will be apparent to those skilled in the art, may be made in the arrangement, operation and details of the method and apparatus disclosed herein without departing from the spirit and scope defined in the appended claims.

[0219] The particular features, structures, or characteristics of any specific embodiment may be combined in any suitable manner and in any suitable combination with one or more other embodiments, including the use of selected features without corresponding use of other features. In addition, many modifications may be made to adapt a particular application, situation or material to the essential scope and spirit of the present invention. It is to be understood that other variations and modifications of the embodiments of the present invention described and illustrated herein are possible in light of the teachings herein and are to be considered part of the spirit and scope of the present invention.

[0220] While the preferred embodiments of the invention have been described, it should be understood that the invention is not so limited and modifications may be made without departing from the invention. The scope of the invention is defined by the appended claims, and all devices that come within the meaning of the claims, either literally or by equivalence, are intended to be embraced therein.

[0221] It is therefore intended that the foregoing detailed description be regarded as illustrative rather than limiting, and that it be understood that it is the following claims, including all equivalents, that are intended to define the spirit and scope of this invention.

1. A computer system for monitoring usage of a vehicle having one or more autonomous operation features, comprising one or more processors and one or more program memories storing executable instructions that cause the one or more processors to:

determine a risk profile associated with operation of the vehicle (i) under operating environment conditions with the one or more autonomous operation features engaged, and (ii) under operating environment conditions with the one or more autonomous operation features disengaged;

receive a log of usage data regarding previous use of the one or more autonomous operation features by a vehicle operator during the operating environment conditions;

determine a plurality of expected use levels of the vehicle during the operating environment conditions, including whether or not the vehicle operator is expected to engage or disengage the one or more autonomous operation features during the operating environment conditions as determined from processor analysis of the log of usage data;

determine a risk level associated with operation of the vehicle based upon (a) the determined risk profile, and (b) the determined expected use levels; and

cause the one or more processors to automatically perform an action based upon the determined risk level, wherein the action includes one or more of: adjust an insurance policy associated with the vehicle, determine a coverage level associated with the insurance policy, present information regarding the determined risk level to a reviewer via a display.

2. The system of claim 1, wherein the executable instructions further cause the one or more processors to:

estimate future usage or operation of the vehicle during the operating environment conditions and with each of the one or more autonomous operation features engaged or disengaged based upon the log of usage data; and

adjust the risk level for the vehicle based upon (1) the determined risk profile, (2) the determined expected use levels, and (3) the estimated future usage or operation of the vehicle.

3. The system of claim 1, wherein the executable instructions further cause the one or more processors to:

estimate future usage or operation of the vehicle, either by time or mileage, during the operating environment conditions; and

adjust the risk level for the vehicle based upon (1) the determined risk profile, (2) the determined expected use levels, and (3) an amount of time or miles that the vehicle is estimated to be operated in the operating environment conditions as indicated by the log of usage data.

4. The method of claim 1, wherein:

the risk profile associated with autonomous operation of the vehicle is based upon test result data generated from test units corresponding to the one or more autonomous operation features;

the test result data include responses of the test units to test inputs corresponding to test scenarios, the test scenarios include vehicle operation with an autonomous feature engaged during the operating environment conditions; and

the test result data are generated and recorded by the test units disposed within one or more test vehicles in response to sensor data from a plurality of sensors, and video recording devices, within the one or more test vehicles.

5. The system of claim 1, wherein the risk profile associated with autonomous operation of the vehicle is based upon actual losses associated with insurance policies covering a plurality of other vehicles having at least one of the one or more autonomous operation features, the actual losses incurred through vehicle operation in the operating environment conditions.

6. The system of claim 1, wherein receiving the log of usage data comprises receiving the log via wireless communication from a mobile device of the vehicle operator in communication with an on-board computer of the vehicle, wherein the mobile device generates the log of usage data from the data received from the on-board computer during a vehicle trip, the log of usage data including: a timestamp indicating a beginning of the vehicle trip, a timestamp indicating an end of the vehicle trip, one or more timestamps associated with engagement or disengagement of the one or more autonomous operation features, and configuration data associated with the one or more autonomous operation features when engaged, and wherein the log of usage data further includes current operating environment conditions during the vehicle trip.

7. The system of claim 1, wherein the executable instructions further cause the one or more processors to:

- receive a request for a quote of a premium associated with a vehicle insurance policy via wireless communication;
- determine a premium associated with the vehicle insurance policy based upon the risk level; and
- present an option to purchase the vehicle insurance policy to the customer associated with the vehicle.

8. The system of claim 1, wherein the log of usage data includes a version of autonomous operation feature control software that is currently installed on the vehicle or in the autonomous operation feature system mounted on the vehicle.

9. The system of claim 1, wherein the executable instructions further cause the one or more processors to:

- receive information regarding a type and version of the one or more autonomous operation features; and
- update the risk level associated with autonomous operation of the vehicle based upon the type and version of the one or more autonomous operation features.

10. The system of claim 1, wherein the one or more autonomous operation features include a vehicle-to-vehicle (V2V) wireless communication capability, and wherein the executable instructions further cause the one or more processors to:

- receive telematics data from other vehicles; and
- generate and display alternate routes based upon the received telematics data.

11. A computer-implemented method for use in connection with a vehicle having one or more autonomous operation features, comprising:

- determining, by one or more processors, a risk profile associated with operation of the vehicle (i) under operating environment conditions with the one or more autonomous operation features engaged, and (ii) under the operating environment conditions with the one or more autonomous operation features disengaged;

- receiving, at the one or more processors or an associated transceiver, a log of usage data regarding previous use of the one or more autonomous operation features by a vehicle operator during the operating environment conditions;

- determining, by the one or more processors, a plurality of expected use levels of the vehicle during the operating environment conditions, wherein the expected use levels indicate whether or not the vehicle operator is expected to engage or disengage the one or more autonomous operation features during the operating environment conditions as determined from processor analysis of the log of usage data;

- determining, by the one or more processors, a risk level associated with operation of the vehicle based upon (a) the determined risk profile, and (b) the determined expected use levels; and

- causing the one or more processors to automatically perform an action based upon the determined total risk level, wherein the actions include one or more of: adjust an insurance policy associated with the vehicle, determine a coverage level associated with the insurance policy, present information regarding the determined risk level to a reviewer via a display.

12. The computer-implemented method of claim 11, the method comprising:

- estimating future usage or operation of the vehicle during the operating environment conditions and with the one or more autonomous operation features engaged or disengaged; and

- adjusting, via the one or more processors, the risk level for the vehicle based upon (1) the determined risk profile, (2) the determined expected use levels, and (3) an amount of time or miles that the vehicle is operated in the operating environment conditions with the one or more autonomous operation features engaged or disengaged indicated by the log of usage data.

13. The computer-implemented method of claim 11, the method comprising:

- estimating future usage or operation of the vehicle, either by time or mileage, during the operating environment conditions; and

- adjusting, via the one or more processors, the risk level for the vehicle based upon (1) the determined risk profile, (2) the determined expected use levels, and (3) the amount of time or miles that the vehicle is expected to be operated in the future in the operating environment conditions.

14. The computer-implemented method of claim 11, wherein:

- the risk profile associated with autonomous operation of the vehicle is based upon test result data generated from test units corresponding to the one or more autonomous operation features;

- the test result data include responses of the test units to test inputs corresponding to test scenarios, the test

scenarios including vehicle operation with an autonomous feature engaged during the operating environment conditions; and

the test result data are generated and recorded by the test units disposed within one or more test vehicles in response to sensor data from a plurality of sensors, and video recording devices, within the one or more test vehicles.

15. The computer-implemented method of claim **11**, wherein the risk profile associated with autonomous operation of the vehicle is based upon actual losses associated with insurance policies covering a plurality of other vehicles having at least one of the one or more autonomous operation features, the actual losses incurred through vehicle operation in the operating environment conditions.

16. The computer-implemented method of claim **11**, wherein receiving the log of usage data regarding comprises receiving the log via wireless communication from a mobile device of the vehicle operator in communication with an on-board computer of the vehicle, wherein the mobile device generates the log of usage data from the data received from the on-board computer during a vehicle trip, the log of usage data including: a timestamp indicating a beginning of the vehicle trip, a timestamp indicating an end of the vehicle trip, one or more timestamps associated with engagement or disengagement of the one or more autonomous operation features, and configuration data associated with the one or more autonomous operation features when engaged, and wherein the log of usage data further includes current operating environment conditions.

17. The method of claim **11**, further comprising:

receiving, at the one or more processors or an associated transceiver, a request for a quote of a premium associated with a vehicle insurance policy via wireless communication;

determining, by one or more processors, a premium associated with the vehicle insurance policy based upon the risk level; and

presenting, by one or more processors, an option to purchase the vehicle insurance policy to the customer associated with the vehicle.

18. The method of claim **11**, the method further comprising:

receiving, via the one or more processors or an associated transceiver, information regarding a type and version of the one or more autonomous operation features; and
updating the total level associated with autonomous operation of the vehicle, via the one or more processors, based upon the type and version of the one or more autonomous operation features.

19. The method of claim **11**, wherein the autonomous operation feature is a vehicle-to-vehicle (V2V) wireless communication capability, and the method comprises:

receiving, via one or more vehicle-mounted processors or associated transceiver, telematics data from other vehicles; and

generating and displaying alternate routes, via the one or more vehicle-mounted processors, based upon the telematics data.

20. A computer system for monitoring usage of a vehicle having one or more autonomous operation features, the system comprising one or more processors and one or more program memories storing executable instructions that cause the one or more processors to:

determine a risk profile associated with operation of the vehicle (i) under a plurality of operating environment conditions with the one or more autonomous operation features engaged, and (ii) under the operating environment conditions with the one or more autonomous operation features disengaged;

receive a log of usage data regarding previous use of the one or more autonomous operation features during the operating environment conditions;

determine from analysis of the log of usage data a plurality of expected use levels of the vehicle during the operating environment conditions, wherein the expected use levels indicate whether or not the vehicle operator is expected to engage or disengage the one or more autonomous operation features during the operating environment conditions;

determine from analysis of the log of usage data, or from analysis of other vehicle or telematics data received from the vehicle or mobile device, an average amount of time or miles that the vehicle operator operates the vehicle during the operating environment conditions for a period of time;

determine a risk level associated with operation of the vehicle based upon (a) the determined risk profile, (b) the determined expected use levels, and (c) the average amount of time or miles that the vehicle operator operates the vehicle during the operating environment conditions for the period of time; and

cause the one or more processors to automatically perform an action based upon the determined total risk level, wherein the action includes one or more of: adjust an insurance policy associated with the vehicle, determine a coverage level associated with the insurance policy, present information regarding the determined total risk level to a reviewer via a display.

* * * * *