



GTR Newsletter

August 2011

The Newsletter of IPMS Grand Touring and Racing Auto Modelers



Inside this issue:

- GTR News and 2011 Calendar
- Revell Kurtis Offy Midget

GTR Auto Modelers

Based in the Chicago, IL Northwest Suburbs
2002/2003 IPMS/USA Region 5 Chapter of the Year
2007 and 2008 IPMS/USA Region 5 Newsletter of the Year
2011 Meetings: Every 1st Saturday @ 7:00 p.m.

**August Meeting at Doug Fisher's
Home in Elmhurst**

Location alternates between member's homes and the Algonquoin Township Building

Your current GTR Officers are:

President: Tim Leicht

815-344-9109

benzwrench@msn.com

Vice President: Steve Jahnke

847-516-8515

stevejahnke@comcast.net

Secretary/Contact: Chuck Herrmann

847-516-0211

gtrchab@yahoo.com

The GTR Newsletter is edited by Chuck Herrmann

Please send all correspondence, newsletters, IPMS information, articles, reviews, comments, praise, criticism to:
Chuck Herrmann 338 Alicia Drive Cary, IL 60013

Unless indicated, all articles written by the editor. All errors, misspellings and inaccuracies, while the editor's responsibility, are unintentional.
Feel free to copy for any other nonprofit use.

Check out the GTR Auto Modelers website at: www.gtrautomodelers.freesevers.com

GTR Mailbag



by Chuck Herrmann

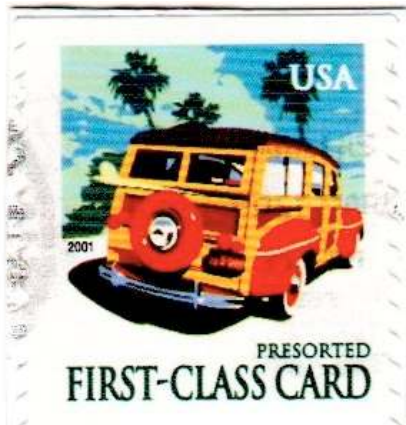
From the Editors desk:

Our 4th Annual GTR Summer NNL was July 31, just yesterday as I am writing this. We will have full coverage next issue, for now I put GTR's own Steve Jahnke's class winning (Open Wheel Competition) Revell Midget racer on the cover, and have excerpted Steve's full review which appears on the IPMS/USA website. Thanks to all our supporters and to everyone who came out to this year's event. Look for all the NNL details in the September GTR Newsletter.

Real World

Surf Woody Stamp

Several months ago we featured the special Indy 500 stamp issued this year. Recently, I received an advertising postcard with this neat stamp featuring a Woody surf rod.



VW Polo WRC



In 2013 Volkswagen will start to contest the FIA World Rally Championship with the Polo R WRC. Until then a rally car with about 300 hp based on the Polo is being developed. To gather initial experience in the World Rally Championship, the team will be contesting selected rallies in 2011 with vehicles from the Volkswagen Group's Škoda brand. At these rounds top talents are to be given the chance to qualify for a cockpit in the

Polo R WRC in a new talent assessment programme under competitive conditions.

New Porsche LMP1

Porsche has announced that it will enter the LMP1 ranks with a factory-run prototype in 2014. The news comes after much speculation that the German manufacturer would step up with an official works program in the near future.

While no further details have been released beyond confirmation of an all-new prototype, destined for the 24 Hours of Le Mans, it comes as welcome news to the sport scar racing world, which has seen primarily a two-horse factory race between Peugeot and Audi in recent years.

It is unclear what implications, if any, today's announcement could have on Audi, Porsche's sister brand, which recently notched up its 10th overall victory at Le Mans.

BMW 328 Hommage



To mark the 75th anniversary of the BMW 328's debut, the Bavarian automaker has introduced the BMW 328 Hommage concept car at the Villa d'Este Concours d'Elegance.



The 328 Hommage is a two seat roadster that features a cut-down asymmetric windshield, cutouts instead of doors, leather hood straps and black accents on the headlamps to mimic the x-pattern of tape that was often sported by competition machines back then. Beneath the hood is a 3.0-liter inline-6, mated to a sequential-shift gearbox that has a lever located high on the center console close to the steering wheel. While the car has plenty of retro styling cues, the materials used are cutting-edge. The body features extensive use of lightweight carbon fiber reinforced plastic. The surface is unpainted to show off the weave pattern of the material. The

extensive use of carbon helps reduce overall weight. The BMW 328 Hommage tips the scales at just 1,720 lb.

Hobby Industry

Fujimi has announced several new releases. The 1/24 Porsche 911 GT3R (Kit FUJ12390) is the street version of the "Miku Hatsune" race version. It is molded in white, with matte chrome wheels and black rubber tires. A "curbside" kit, the decals are the only differences between this and the "Miku Hatsune" versions.



The 1/24 Mercedes Benz SLS AMG (Kit FUJ12392) is all new tooling.



In 1/20, to go along with their recent 1/20 Grand Prix cars, there is a Pit Crew and Pit Wall set (kit FUJ11332). The set includes the stand with computer monitors, radios, chairs, and roof, with two seated and two standing figures, it is all new tooling.



Events

Local events this month include the Good Guys Car Show in Joliet which includes a model car contest, and the American LeMans Series race at Road America – note the ALMS feature event is on Saturday, not Sunday.

See the events calendar for details for all of the events that I know of. If any readers wish their events or any other events of interest to GTR listed send the information along to me.



GTR Update

With the date falling over the July 4th holiday weekend, there was no regular July GTR meeting last month. The next regular meeting will be Saturday, August 6 at Doug Fisher's home in Elmhurst. Directions will be in the member's emailed newsletters. Then in September we will meet at the Township.

GTR will be hosting a model display at the Meadowdale Motorsports and Memories Car Show at Raceway Woods in Carpentersville, IL on September 17. This is a daylong event to commemorate the history of the former Meadowdale International Raceway, a road course that hosted races up until 1968. The area is now called Raceway Woods, with portions of the old track preserved. Our display details are still being worked out. For event details see: www.mirpa.org

Any member who wants to bring up other ideas or suggestions for future meetings or activities, do so either at the meeting or contact me.

Past issues of the GTR newsletters are now available on line.

Go to www.carsandracingstuff.com, then click on Newsletters, find GTR and our newsletters are achieved back to 2004, more will be added. Thanks to Bill Crittenden for storing our newsletters on his site.

IPMS News

GTR is a local chapter of IPMS/USA, in Region 5. We urge those who have lapsed to renew their IPMS/USA membership, or if you have never been a member enroll now! We need five active national IPMS/USA members to renew. Often we have had issues getting the required amount of IPMS members, and this year we had the minimum, so help out GTR as well as the IPMS and join or renew now! Details can be found at their web site, www.ipmsusa.org, or see me for membership forms.

Kit Review:

Revell's Offy Kurtis Midget



Manufacturer: Revell **Price:** \$24.95
Kit#: 85-4267 **Scale:** 1/25

by: Steve Jahnke

This review is excerpted from the IPMS/USA website. See www.ipmausa.org for the full review

112 pieces, molded in white, clear and chrome; newly tooled front and rear race tires; included is a fret of photo etched parts including: Instrument panel, steering wheel spokes and hood hold down straps .

This is the sister kit to Revell's other Kurtis Kraft Midget racer, the Ford V8-60 Kurtis Kraft model and trailer. This subject review is the same Kurtis Kraft race car fitted with an Offenhauser 4 slug motor. but with a few parts specific to the Offy. Those parts include of course a beautifully molded 17 piece motor and a body nose piece and grill specific to this car. My build started by searching the internet for pictures of 1:1 scale Kurtis midget racers and found a number of sites that featured museum and restored midgets along with some great pictures of a Hilborn fuel injected Offy motor; the build decision was made. Since I was building the car as it would have been racing in 1947-1950 and owned by "Johnny's Speed Shop" , I decided to paint it Testors Ford Grabber Orange (similar to Omaha Orange, a truck color of the time) with steel

painted wheels, there would be more than enough chrome on the car to dress it up.

The Build

I start my builds by painting the body parts and then moving onto everything else. I mounted all of the body panels on long pieces of sprue and sprayed each piece with two coats of Testors Grabber Orange. About a week later I brought out the shine by polishing the paint with Final Detail carnuba wax followed up with a treatment of Slik and Smooth from Mike's Scale Speed Shop. I didn't want to the finish too glossy (clear coated) because I was trying to mimic the look of period, shiny, not a modern restoration.

Assembly starts with the Offy motor; the builder has a choice of the aforementioned Hiborn Fueley setup or dual SU style side draft carburetors. I went with the Hiborn setup as seen in photo. I decided to add spark plug wires to the red magneto on the front of the engine. I drilled out the spark plug holes and added 4 new holes in the magneto with a .020" (.52mm) drill; I then glued .019" (.48mm) thick PC board jumper wires to the mag and painted them Chrysler engine red. After letting the paint dry I then inserted the wires into the cylinder head pushing them in evenly, super gluing and then cutting off any access wire through the hole on the side of the block where the Hilborn injector would later be attached later. The chrome inlet trumpets were added to the Hilborn injectors and mounted to the engine; a misalignment of the front trumpet prompted me to relieve (widen) the left side panel hole (part 12) so it would fit into the belly pan.



Did I mention that the chrome is absolutely flawless and fabulous? A lot of effort went into engineering the attachment points of the chrome pieces to the tree, most if not all of the chrome parts were easy to remove leaving a very small attachment point to cover up. Check out how the exhaust pipe has been molded hollow, I added some NATO black in the hollowed out pipe to enhance the effect. I then brought out my DecoColor extra-fine "liquid silver" opaque paint marker pen to cover the attachment points and repaint super-glue fogging on the chrome pieces. This marker saves the day on all of the chrome bits in this kit; you will have a hard time finding any of the touchups with this pen. The rest of the assembly is pretty straight forward; however I will give you a few hints to assembly steps that caused me some grief.

Both front and rear axle assemblies are chrome and all of the wheels are attached to the axles by a 1/16" rivet and pin retainer. The first attempt to attach the pin retainer (97) to the front axle with the rivet resulted in badly bending (30 degree angle) but not breaking the axle. REMEDY: drill out all of the axle holes in step 3 and 5 with a 1/16" drill bit to remove the plating, and then attach the pin retainers to the axles with the rivet. I also had fit issues with the radiator not sitting low enough in the belly pan; the hood will not sit flush with the side panels when the radiator cap is attached to the radiator, possibly my build error, not Revell's but be aware.

Before adding the hand brake and fuel pump in step 9, mount the hood and side panels to the belly pan and then apply all of the decals. I did the Johnny's Speed Shop decals with those chrome pieces mounted and it was dicey getting the decal threaded through the chrome parts and aligned. I also had an issue using the photo etch steering wheel which is gorgeous. The steering wheel rim (94) is EXTREMELY fragile, I broke mine in two and after two tries, and I was never able to repair it properly, so the part 25 was used instead.



I am saving my trailer build for future 50 Ford or 41 Chevrolet truck build, or maybe I will just pull it behind my AMT custom 41 Ford Woody or Revell 47 Ford Woody.

Conclusion

Overall this is an extremely fine kit; it is very well engineered and executed and builds up into a fine model as the pictures attempt to illustrate. This is a skill level 3 kit; be careful, the parts are delicate and can and will break easily. If you are into early open wheel race cars you must add one of these little jewels to your collection.



Next Issue of GTR Newsletter:

- GTR Summer NNL Coverage and Photos
- Round 2 Snap Batmobile
- Road America ALMS Photos

2011 GTR Event Calendar

Aug 4-7 IPMS/USA National Convention
Omaha, NE <http://www.ipmsusa2011.org/>

August 12-14 Good Guys Model Car Show
With Good Guys Chicagoland Nationals
Sponsored by Revell
Chicagoland Speedway, Joliet IL
Roman Timokhin 847-361.5874
www-good-guys.com

August 18-20 American LeMans Series
Road America, Elkhart Lake WI
www.roadamerica.com

Sep 17 Meadowdale Motorsports and Memories
Car Show
Raceway Woods Rt. 31 Carpentersville, IL
www.mirpa.org

Sept 24 Nordic CON 2011
IPMS/Twin Cities Aero Historians
North Aire Banquet Hall Fridley, MN
Bob Maderich 612-423-2985

Sep 25 58th Illinois Plastic Kit & Toy Show
DuPage County Fairgrounds Wheaton, IL.
For info call Past Time Hobbies @ 630-969-1847

October 8 Toledo Swap Meet and NNL

Oct 15 – IPMS/Glue Crew Contest & swap
Howard Johnson Inn & Conf Center
Wausau, WI Joe Drew 715-842-0173

Oct 16 Countryside Collectors Classic Toy Show
With 1/43rd Collectors Club
Park Place of Countryside Countryside, IL
www.uniqueeventsshows.com

Oct 29 Circle City Modelers Contest & Swap
Knights of Columbus Hall, Indianapolis IN
Cgbeach1221954@yahoo.com

October 20-23 iHobby Expo
Public Days 10 am – 5 pm Saturday and Sunday
Stephens Convention Center, Rosemont IL
www.ihobbyexpo.com

Nov 6 Scale Auto Hobby and Toy Swap Meet
Serb Hall, Milwaukee WI
www.uniqueeventsshows.com

Nov 12 29th Annual IPMS Butch O'Hare Model
Contest and Swap Meet
Lakeview Jr HS Downers Grove IL
John Wendt 630-969-9016

December 4 Tinley Park Toy Show
Tinley Park HS, Tinley Park IL
www.uniqueeventsshows.com

December 11 Milwaukee Miniature Motors Winter
Show – Swap and Contest
Waukesha County Expo Center, Waukesha WI
www.milwaukeeeminaturemotors.com

IPMS USA

International Plastic Modelers Society

2011 Nationals: Aug 4-7 Omaha, NE
<http://www.ipmsusa2011.org/>

No 2011 Region 5 Convention since the
National is in Region 5
2012 Region 5 Regional - TBD
2012 Nationals: Orlando, FL



GTR Auto Modelers Newsletter

IPMS/GTR Auto Modelers

Chuck Herrmann
338 Alicia Drive
Cary, IL 60013

Next GTR Meeting: August 6, 2011

www.gtrautomodelers.freesevers.com