



# GTR

## Newsletter

### January 2010

The Newsletter of IPMS Grand Touring and Racing Auto Modelers

## Happy New Year 2010

### Inside this issue:

- GTR News and Calendar
- Vintage Kit Build:  
Doyusha's Nissan Cherry



## GTR Auto Modelers

Based in the Chicago, IL Northwest Suburbs

2002/2003 IPMS/USA Region 5 Chapter of the Year

2007 and 2008 IPMS/USA Region 5 Newsletter of the Year

2009 Meetings: Every 3rd Saturday @ 7:00 p.m.

**January Meeting is at The Fountains of Crystal Lake**

**On Rt.31. about one mile north of Rt. 176**

Location alternates between member's homes and the Fountains of Crystal Lake

Your current GTR Officers are:

President: John Schaefer

630-553-0719

[johndstp43@cs.com](mailto:johndstp43@cs.com)

Vice President: Steve Jahnke

847-516-8515

[stevejahnke@comcast.net](mailto:stevejahnke@comcast.net)

Secretary/Contact: Chuck Herrmann

847-516-0211

[gtrchab@yahoo.com](mailto:gtrchab@yahoo.com)

The GTR Newsletter is edited by Chuck Herrmann

Please send all correspondence, newsletters, IPMS information, articles, reviews, comments, praise, criticism to:  
Chuck Herrmann 338 Alicia Drive Cary, IL 60013

Unless indicated, all articles written by the editor. All errors, misspellings and inaccuracies, while the editor's responsibility, are unintentional.  
Feel free to copy for any other nonprofit use.

**Check out the GTR Auto Modelers website at: [www.gtrautomodelers.freeservers.com](http://www.gtrautomodelers.freeservers.com)**

# GTR Mailbag

by Chuck Herrmann

## Real World

### NASCAR to return to Road America in 2010!



NASCAR racing returns to Road America in 2010 as the Nationwide Series will appear the weekend of June 17-20 for a 200 mile race. This in effect takes the place of the Nationwide event formerly held at the now financially troubled Milwaukee Mile in recent years. An SCCA Trans-Am event is also scheduled for the weekend.

### Return of Michael Schumacher to F1



In 2010 seven time world champion Michael Schumacher will return to Formula One racing at the age of 41. Schumacher, who retired from the Ferrari team after the 2006 season, has signed on with the new Mercedes Benz F1 team. After many years on supplying engines for and being part owner of the McLaren F1 team, Mercedes sold off their part of McLaren and has purchased the Brawn team, which won both the drivers and constructors titles last year. And former team owner Ross Brawn will stay on to run the team. Brawn and Schumacher were the key factors on the successful Ferrari team that won five world championships. Surely the return of the Silver Arrows name along with Schumacher will give a publicity boost to F1 for 2010, hopefully making up for the Honda, Toyota, and BMW factory withdrawals from the sport over the last two years.

### Indy 500/IRL News

The new Chevy Camaro will be the pace car for the 2010 Indy 500. The colors for 2010 will be Inferno Orange Metallic with white stripes, the opposite of the colors used for the first Camaro pace car in 1967.



In other Indy 500 news, we learn that for 2010 the on track activities will not start until May 15 and that there are only two qualifying days, Pole Day and Bump day instead of the traditional four days over two weekends. This means that instead of being the center of the racing world for the whole month of May Indy has shrunk to two weeks. While some people have complained that a whole month was too much, it is a significant indication of the reduced status of the 500, and even more so of top level open wheel racing, in the US. So all the squabbling and politics of the split up of the great CART series back in the early 1990's not only killed off CART but also left IndyCar and the Indy 500 seriously weakened. And instead of the cost effective, oval only, American driver based series promised by Tony George we now have a series with more road and street courses on the schedule for 2010 than ovals, with non-US drivers dominating Indy 500 and series titles recently in an spec car series using Italian Dallara chassis and Japanese Honda engines. And last year the Penske and Target teams won all but one event, wasn't the dominance of a few top teams (including Penske!) one of the big problems with CART? Sounds a lot like the evil CART series before the split, but with a lot less fan interest. And the biggest race of the year at the Indianapolis Speedway is now the NASCAR Brickyard 400. Thanks, Tony George. No wonder the Speedway fired him from the president's job last year (despite the fact his family owns the track!)

## Media

### Auto References in Pop Music

From the latest CD by **Iron and Wine**, *Around the Well* (2009), we find the song *God Made the Automobile*:

*God made the automobile  
To pass all the pretty girls  
That smoke by the side of the road  
Their blues lovin boys in tow  
To drive until the end of the day*

## Events

The 3<sup>rd</sup> Annual GTR Summer NNL will be August 8 at the usual location, the Algonquin Township offices in Cary, IL. The date has been approved by the IPMS Region 5 Coordinator. The theme is EuroCars, any automotive subject that is manufactured in Europe.

The 11th Annual Classic Plastic Model Car Swap Meet with a Model Car Display area, hosted by Rockford Wheels in Scale is January 24. It is at the same location as in past years, The Ken Rock Community Center / Our Lady of the Sacred Heart Academy at 3218 Eleventh Street in Rockford, IL from 9:00 AM to 3:00 PM, GTR will have a club table as usual.

IPMS/Lakes Region Scale Modelers has announced they will be holding NIMCON, an all category model contest and swap meet, at McHenry County College on July 17.

See the events calendar for details and for all of the events that I know of. I am adding 2010 events as I confirm the details. If any readers wish their events or any other events of interest to GTR listed send the information along to me.

Racing Season is coming! The Dakar Rally is happening as you read this, here are some of the major races for 2010:

Jan 30-31 Daytona 24 Hours Grand AM  
Feb 14 Daytona 500 NASCAR  
Mar 20 Sebring 12 Hours ALMS  
May 30 Indy 500 IndyCar  
Jun 12-13 LeMans 24 Hours  
July 25 Brickyard 400 NASCAR  
October 2 Petit LeMans ALMS, Road Atlanta GA

# GTR News



## GTR Update

There was no December GTR meeting since it fell so close to the Christmas holidays. So the next GTR meeting will be January 16, 2010 at The Fountains of Crystal Lake. We will need to pick club officers for 2010; also we need to discuss any programs or activities for the upcoming year. I will have the latest on our contest, the 3<sup>rd</sup> annual GTR Summer NNL. Also GTR will help support a number of local events in

2010 so we will review the treasury and decide what we can do. Any member who wants to bring up ideas or suggestions for future meetings or activities, do so at either at the meeting or contact me.

For 2010 the annual dues for GTR will remain at \$15. Please pay up at the next meeting or mail to me (checks made out to Chuck Herrmann, *not* GTR please).



If you ordered a GTR T-Shirt but haven't gotten yours yet let me know. I have three XL shirts left, cost is \$9, first come first served so contact me ASAP if you want one.

Past issues of the GTR newsletters are now available on line.

Go to [www.carsandracingstuff.com](http://www.carsandracingstuff.com), then click on Newsletters, find GTR and our newsletters are achieved back to 2004, more will be added. Thanks to Bill Crittenden for storing our newsletters on his site.

## GTR Classifieds

### For Sale: Selling Off Collection

Over 300 Plastic Kits: Tamiya, Fujimi, Hasagawa, Revell/Monogram, MPC, AMT and more 1/18th Diecast : Exoto, CMC, Auto Art, GMP, Minichamps, NASCAR, etc.

Resin Kits: Fisher, Renaissance, LeMans Miniatures, Profil 24, CMA, Scale Designs.

Most kits new, some slightly started, mostly race cars and exotics, ASA, Formula 1's. Also many slot cars.

Please contact: Dave Edgecombe, 815-566-2339 or [jedgeco@hotmail.com](mailto:jedgeco@hotmail.com)

**Wanted:** Italeri #669 Ferrari 365GTB4 Daytona race version

Les Whitfield [whitfield1@yahoo.com](mailto:whitfield1@yahoo.com)

## IPMS News



GTR is a local chapter of IPMS/USA. We have completed our annual chapter renewal for 2010. A local chapter needs at least five national members to renew and again we barely had enough. So if you could join IPMS/USA it will help out the club and the hobby. I urge those who have lapsed to renew their IPMS/USA membership, or if you have never been a

member enroll now! Details can be found at their web site, [www.ipmsusa.org](http://www.ipmsusa.org), or see me for membership forms.

GTR is a chapter of IPMS/USA Region 5, which runs from the Indiana border on the east out to Nebraska, and from Missouri on the south up to Canada. Each region has a Regional Coordinator, for the last three years the Region 5 Coordinator has been Mike George from the St. Louis area. Mike has stepped down and the new Region 5 Coordinator is Kelly Quirk, from the Kansas City area.

# IPMS USA

International Plastic Modelers Society

**2010 Region 5 Convention:**  
Hosted by IPMS/Duneland – Portage, IN

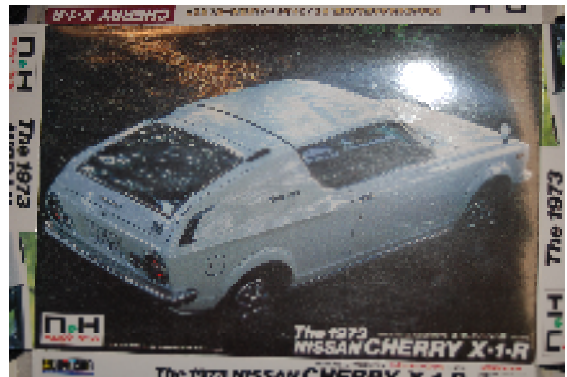
**National and Regional Conventions:**  
2010 Nationals: Aug 4-7 Phoenix, AZ  
2011 Nationals: Omaha, NE  
No 2011 Region 5 Convention

## Vintage Kit Build: Doyusha's Nissan Cherry



**Subject:** 1973 Nissan Cherry X-1-R  
**Manufacturer:** Doyusha  
**Kit #:** NH-2      **Scale:** 1/24 (actually 1/20)  
*By Chuck Herrmann*

**Subject:** The Nissan Cherry was a series of small cars, launched in 1970 which formed Nissan's first front-wheel-drive model line. The Cherry line included the E10 and F10. The X-1-R sporty version in 1973 featured a larger four cylinder engine with dual carbs and fender flares. The series was sold throughout the world, including the US until 1978 when it was replaced by the N10, also known as the Pulsar.



**Kit:** This model kit is by Japanese manufacturer Doyusha. I assume it was produced in the mid to late '70s. A flyer in the box shows a line of 1/24 as well as 1/12 Japanese market cars. I do not remember much about these, but I assume their Japanese version only subjects would not have been of much interest to the US hobby market. Also, they are limited in detail and are based on motorized toys, similar to early Tamiya kits. But unlike Tamiya kits, these are really toy like in appearance, with minimal detail and very shallow interiors (to fit over the electric motor and batteries). I have had the kit for several years, it was started a long time ago but I never really knew what to do with it until recently. Since the kit was not buildable into a decent replica out of the box, and the interior was virtually useless, I decided to do a slammer custom version. Also, as I looked at the kit it became apparent that it was too big – compared to other 1/24 kits it was big as an old Impala! So while I did not actually measure it the scale is more like 1/20 than 1/24.

**Body:** The body is one piece molded in white. There are numerous add on chrome trim pieces, also two front fender mounted mirrors. Most of the chrome parts were dechromed and glued onto the body then sanded flat. Also all the molded on scripts and turn signals were cleaned off and the holes for the front mirrors filled in. Once the body was smooth I primed it then airbrushed it with Testors Colors by Boyd's Sunburst enamel. (my bottle was labeled from 1998 but it worked just fine). The windows were a one piece clear unit that fitted in from underneath – I sprayed it flat black from the inside. The rear taillights are chrome, with Tamiya clear red paint used for the lenses. The front headlights were chrome inserts, so I left those off, fit some round clear pieces from the spares box with Bare Metal underneath to make some better looking lenses. The bumpers were left chrome.

**Chassis:** The chassis is one piece, with simplified front suspension for turning the wheels, a metal axle in the rear and a removable panel for the batteries. Since this was a slammer I just painted everything flat black and adapted the

front to a metal axle since I was not going to use the kit wheels and tires, which were very tacky looking. I dug through my box of spare wheels and tires and found some spoked wheels and low profile “rubber band” tires from the AMT Street Heat kit, a snap custom version of the Chrysler Concorde.

In that kit they are massive 27” wheels. But since this kit is really about 1/20 scale they look more like 18”. I used simple plastic tubing as washers on the metal axles to extend the wheels out to the end of the body, since this is a slammer style build the lack of detail does not matter. I fiddled with the ride height to make it level.

Once the tires were in place, due to the lack of engine/interior the model had the see-through look: through the wheel wells you could see daylight from the other side. So I glued some sheet stock vertically to the top of the chassis plate, cut it to fit to the body and painted it flat black.

**Interior:** Again since this is slammer I just glued the shallow interior “tray” in to hold up the painted glass – nothing shows.



**Kitbashed Parts:** Once I decided on the final “look” of the model I went through my spare parts bins looking for pieces to finish the project off. The front wheels needed brakes so I added some, painted gold with red brakes to show off through the wheel spokes. The brakes came from the remains of a 1/20 Lamborghini Countach kit. This kit also donated the rear view mirrors and the chrome dual exhaust tips



**Summary:** The final product reminds me of an import tuner type custom, the style often seen in Jada diecasts or kits. The molded in flares (too big based on the photos of a stock vehicle on the box art) give it an aggressive look, and the big wheels and tires compliment that feel. The paint went on okay, it just needed a bit of polishing. While it is not quite contest quality, it turned out to be a decent shelf model, of a unique subject you are not likely to see repeated.

**The Real Thing:**

Below are some photos of Cherrys from the web.



A stock X-1-R



A racing Cherry – really big flares!



Another road racer



A stock 1971 four-door

# GTR Summer NNL

## 3<sup>rd</sup> Annual Contest & Swap Meet

Hosted by: IPMS/GTR Auto Modelers

Theme:



**EUROCARs**

Attention Automotive Modelers; we have a summer show and swap meet for you! You are invited to our GTR Summer NNL contest and swap meet.

The Summer NNL will be held on  
**Sunday August 8<sup>th</sup> 2010**  
 from 9:30AM to 2:00PM at the  
**Algonquin Township Building, 3702**  
**US Highway 14, Crystal Lake,**  
**Illinois 60014**

For the out-of-towners, there are tons of local accommodations from Days Inn to Holiday Inn.

Admission to the show is a measly 5 bucks; you can enter as many models on the tables as you like (no additional charge) and we will serve a pizza lunch (again, no additional charge, soda extra; sorry had to draw a line somewhere) to all show entrants.

Did we mention that there is a swap meet too? There will be a free "trunk sale" swap meet in our spacious parking lot, vendors and show goers are encouraged to open their trunks and sell-sell-sell rain or shine. Vendor set-up starts at 8:30AM. Also we will raffle off some nice prizes.

Our NNL style contest bestows "Best Of" awards as mandated by popular vote as determined by show attendees, official judging and nit-picking is strictly forbidden, praise and admiration from fellow modelers strongly encouraged.

**Awards:** Contest participants vote on Best of in each class, Best Theme and People's Choice

### **Classes:**

GTR NNL contest officials reserve the right to move your model to the correct class.

Models that have won previous IPMS Regional or National awards cannot compete for trophies but will gladly be accepted for display.

<b>Competition Open Wheel</b>	All scales	F1, Indy, Drag, etc
<b>Competition Closed Wheel</b>	All scales	NASCAR, LeMans/IMSA, Can-Am, Drag
<b>Street</b>	All scales	Street legal: Muscle Cars, Sports/Exotics, Tuners, beaters, factory stock
<b>Custom</b>	All scales	Modified custom vehicles
<b>Commercial</b>	All scales	Trucks, Taxis, Police, Ambulance and Emergency
<b>Motorcycles</b>	All scales	All types
<b>Curbside</b>	All scales	All types:Hood closed, judged as displayed, includes slammers
<b>Out of the Box</b>	All scales	All types:No modifications to the kit except filler, paint, decals and foil
<b>Theme</b>	All scales	Any automotive subject that is produced in Europe.
Examples: Ferrari, Porsche, Fiat, Yugo, Renault, VW, Lotus, Mercedes, Ducati, Smart, Citroen, Mini, BMW, Opel		
Includes: Production cars, Racing cars, Motorcycles, Trucks		
<b>People's Choice</b>	Any model in the contest.	

Contact: [gtrchab@yahoo.com](mailto:gtrchab@yahoo.com)

See: [www.gtrautomodelers.com](http://www.gtrautomodelers.com)

[freeservers.com](http://freeservers.com)



# 2010 GTR Event Calendar

Jan 17 Scale Auto Hobby and Toy Swap Meet  
Serb Hall, Milwaukee WI  
[www.uniqueeventsshows.com](http://www.uniqueeventsshows.com)

Jan 24 RWIS Classic Plastic Swap Meet and  
Model Display at Ken Rock Community Center /  
Our Lady of the Sacred Heart Academy 3218  
Eleventh Street, Rockford IL

Feb 6 Hope It Don't Snow Show  
IPMS/Zumbro Valley Scale Modelers Ramada  
Hotel, Rochester, MN  
[George Romano](mailto:George.Romano) 507 281 4175  
[romano@infonet.isl.net](mailto:romano@infonet.isl.net)

Feb 28 55th Illinois Plastic Kit & Toy Show  
DuPage County Fairgrounds Wheaton, IL.  
For info call Past Time Hobbies @ 630-969-1847

March 7 Scale Auto Hobby and Toy Swap Meet  
Serb Hall, Milwaukee WI  
[www.uniqueeventsshows.com](http://www.uniqueeventsshows.com)

Mar 14 Cedarville Toy Show & Model Car  
Contest  
Jane Addams Com. Center, Cedarville IL  
Scott Baldauf 815-369-2053  
[scootersmalibu@netscape.net](mailto:scootersmalibu@netscape.net)

Mar 28 Countryside Collector's Toy Show  
Park Place of Countryside Union Hall,  
6240 Joliet Road Countryside Illinois  
[www.uniqueeventsshows.com](http://www.uniqueeventsshows.com)

April 10 IPMS/Mad City Modelers  
Radisson Hotel, Madison, WI  
Michael Luedke 262-567-9147

April 10 16th Annual IPMS Plastic Surgeon's  
Contest  
Valley Free Church, West Des Moines, IA  
[Rob Folden](mailto:Rob.Folden) 515-661-1217  
[wdm.plasticsurgeons@gmail.com](mailto:wdm.plasticsurgeons@gmail.com)

April 10 Milwaukee NNL 18  
Hosted by AMG  
Excellence Center, Waukesha WI  
[Scottiek1@chater.net](mailto:Scottiek1@chater.net)

April 11 Milwaukee Miniature Motors Spring  
Scale Model Show  
Waukesha County Expo Center  
[www.milwaukeeeminiaturemotors.com](http://www.milwaukeeeminiaturemotors.com)

April 17 24<sup>th</sup> Annual NNL East  
Wayne, NJ

April 24 Ferrari Expo  
Continental Motorsports, Hinsdale IL  
[alfaromeo2465@yahoo.com](mailto:alfaromeo2465@yahoo.com)

May 1 Hoosier Model Car Assoc. 30<sup>th</sup> Annual  
Miniature Vehicle Collectors Swap and Contest  
First Church of the Nazarene Indianapolis, IN  
[indyhmca@hotmail.com](mailto:indyhmca@hotmail.com)

Jun 6 12<sup>th</sup> Annual NNL North  
Bloomington, MN

June 19-20 IPMS Region 5 Regional Convention  
Portage, IN

July 11 2<sup>nd</sup> Annual Attack of the Plastic Model  
Car Show and Swap  
Hosted by The Butchers Model Car Club  
American Legion Hall, Delavan WI

July 17 NIMCON hosted by IPMS/Lakes Region  
Scale Modelers  
McHenry County College, McHenry IL  
See [www.lrsm.org](http://www.lrsm.org) or contact [pjp68@comcast.net](mailto:pjp68@comcast.net)

July 30-Aug 1. Model Car Contest by C.A.R.S. in  
Miniature, in conjunction with The Indian  
Uprising Car Show  
St Charles, IL

August 4-7 IPMS/USA National Convention  
Phoenix, AZ

August 8 3<sup>rd</sup> GTR Summer NNL  
Algonquin Township Offices  
Cary, IL  
[gtrchab@yahoo.com](mailto:gtrchab@yahoo.com)

Sept 26 56th Illinois Plastic Kit & Toy Show  
DuPage County Fairgrounds Wheaton, IL.  
For info call Past Time Hobbies @ 630-969-1847

October 21-24 iHobby Expo  
Donald Stephens Convention Center  
Rosemont, IL  
[www.iHobbyexpo.com](http://www.iHobbyexpo.com)

Oct 17 Countryside Collector's Toy Show  
Park Place of Countryside Union Hall,  
6240 Joliet Road Countryside Illinois  
[www.uniqueeventsshows.com](http://www.uniqueeventsshows.com)

Nov 7 Scale Auto Hobby and Toy Swap Meet  
Serb Hall, Milwaukee WI  
[www.uniqueeventsshows.com](http://www.uniqueeventsshows.com)

**GTR Auto Modelers Newsletter**

**Happy New  
Year!  
Have a great  
2010!**

**IPMS/GTR Auto Modelers**

Chuck Herrmann  
338 Alicia Drive  
Cary, IL 60013

**Next GTR Meeting: [January 16, 2010](#)**

[www.gtrautomodelers.freesevers.com](http://www.gtrautomodelers.freesevers.com)