

Mr. S. J. Hitchcock-1

S7666-A

PUBLIC ROADS ADMINISTRATION
FEDERAL WORKS AGENCY
WASHINGTON 25, D. C.

INFORMATIONAL MEMORANDUM NO. 55

DATE: JANUARY 10, 1944

SUBJECT: TRAFFIC VOLUME TRENDS

Preliminary data for November from 546 automatic traffic recorders in 41 States indicate a decrease of 17.9 percent as compared with November 1942. Decreases at stations located on local highways were 15.3 percent. Detailed data are tabulated in table 1.

A revised summary of the October data, shown in table 2, indicates slight changes from the values published December 1, Informational Memorandum No. 51.

In the attached chart it will be seen that the percentage relationship between traffic in 1943 with that in a corresponding month in 1941, declined slightly from October to November in both the area rationed in May 1942 and the area rationed in December 1942. Again the gap between these two areas has closed slightly.

It will be observed (table 1) that in the southeastern States of Florida, Georgia, North Carolina, and South Carolina, traffic volumes on rural highways in November exceeded those in November 1942. This trend has been apparent for several months and is exemplified further in the data for the 41 drawbridges in eastern North Carolina for which total November traffic was 8.1 percent greater in 1943 than in 1942 (table 3); while traffic on 14 toll facilities located from Maine to Florida was 3.5 percent less than in November 1942.

Detroit traffic during the first three weeks of November 1943 was 20.6 percent less than in November 1942, while traffic at 26 locations on rural highways in Michigan was 28.2 percent less than a year ago. Decreases in traffic in the city of Detroit, compared to 1942 traffic, have ranged from 16.5 percent to 20.6 percent since August 1943. In the same period corresponding traffic decreases on rural highways in Michigan have ranged between 23.1 percent and 35.2 percent. During August and September the percentage decreases in traffic at three city locations were about one-half those reported in the rural areas, while in October and November they were approximately three-fourths of those in the rural areas.

H. S. FAIRBANK, DEPUTY COMMISSIONER,
PUBLIC ROADS ADMINISTRATION.

Enclosures.



TABLE 1.--PRELIMINARY SUMMARY* OF AUTOMATIC TRAFFIC RECORDER DATA FOR NOVEMBER 1943 INCLUDING 546 STATIONS IN 41 STATES

P-708

Type of highway and State	Number of stations	Total daily traffic	Percent decrease ¹ from Nov. 1942	Type of highway and State	Number of stations	Total daily traffic	Percent decrease ¹ from Nov. 1942
<i>STATE HIGHWAYS</i>				<i>STATE HIGHWAYS</i>			
Arizona	5	12,078	23.8	Washington	9	14,648	22.3
Arkansas	22	14,117	25.4	West Virginia	11	14,200	14.8
Colorado	5	4,810	29.9	Wisconsin	9	16,726	24.2
Connecticut	19	50,262	11.6	Wyoming	2	935	+ 0.5
Delaware	3	7,363	15.9				
Florida	19	21,401	+ 8.4	<i>TOTAL -</i>			
Georgia	5	9,067	+ 8.4	<i>41 STATES</i>	513	724,259	18.0
Idaho	7	9,670	10.2				
Illinois	3	2,211	24.1	<i>LOCAL HIGHWAYS</i>			
Iowa	26	21,421	28.6	Connecticut	2	592	7.2
Kansas ³	9	7,731	26.6	Georgia	4	944	3.0
Kentucky	13	13,077	23.2	Iowa	9	1,024	14.7
Louisiana ³	6	12,375	18.2	Kentucky	1	140	27.1
Maine	10	10,729	5.1	Maryland	1	304	+ 9.0
Maryland	16	36,925	3.8	Massachusetts	1	100	66.8
Massachusetts	8	22,102	5.9	Michigan	2	455	31.9
Michigan	26	57,235	28.2	Montana	2	383	+ 8.2
Mississippi	9	10,810	11.9	Nebraska	1	142	+11.8
Montana	12	7,085	13.6	North Dakota	1	244	+ 0.4
Nevada	13	10,047	40.9	Ohio	3	1,219	20.4
Nebraska	11	8,717	31.8	Oregon	1	201	6.5
New Hampshire	17	12,840	7.0	Rhode Island	1	302	18.2
New York	7	17,199	9.5	Tennessee	2	845	15.9
North Carolina ⁴	19	26,434	+ 0.6	Wisconsin	2	339	23.0
North Dakota	11	4,269	18.9				
Ohio	28	45,943	24.5	<i>TOTAL -</i>			
Oklahoma	20	29,501	25.0	<i>15 STATES</i>	33	7,234	15.3
Oregon	2	3,676	26.5				
Pennsylvania	30	43,621	19.2	<i>ALL HIGHWAYS</i>			
Rhode Island	3	4,730	7.6	<i>41 STATES²</i>	546	731,493	17.9
South Carolina	6	8,679	+ 7.5				
South Dakota	9	5,828	19.2	<i>RATIONED AREA</i>			
Tennessee ³	1	2,901	13.9	<i>MAY 1942</i>			
Texas	67	103,021	19.0		163	259,544	6.5
Utah	8	7,924	17.4	<i>RATIONED AREA</i>			
Vermont	2	1,383	20.1	<i>DECEMBER 1942</i>			
Virginia	5	10,568	23.1		383	471,949	23.1

* Data from some States cover only a portion of the month, or have not been adjusted for the difference in numbers of Saturdays and Sundays between this year and last.

1 Plus sign before percentage indicates increase.

2 Includes all States except the following: Alabama, California, Indiana, Minnesota, Missouri, New Jersey, and New Mexico.

STATIONS NOT INCLUDED:

3 Defense activity - 1 each in Kansas and Tennessee, 2 in Louisiana.

4 Occasional high counts due to military activities - 10 stations in North Carolina.

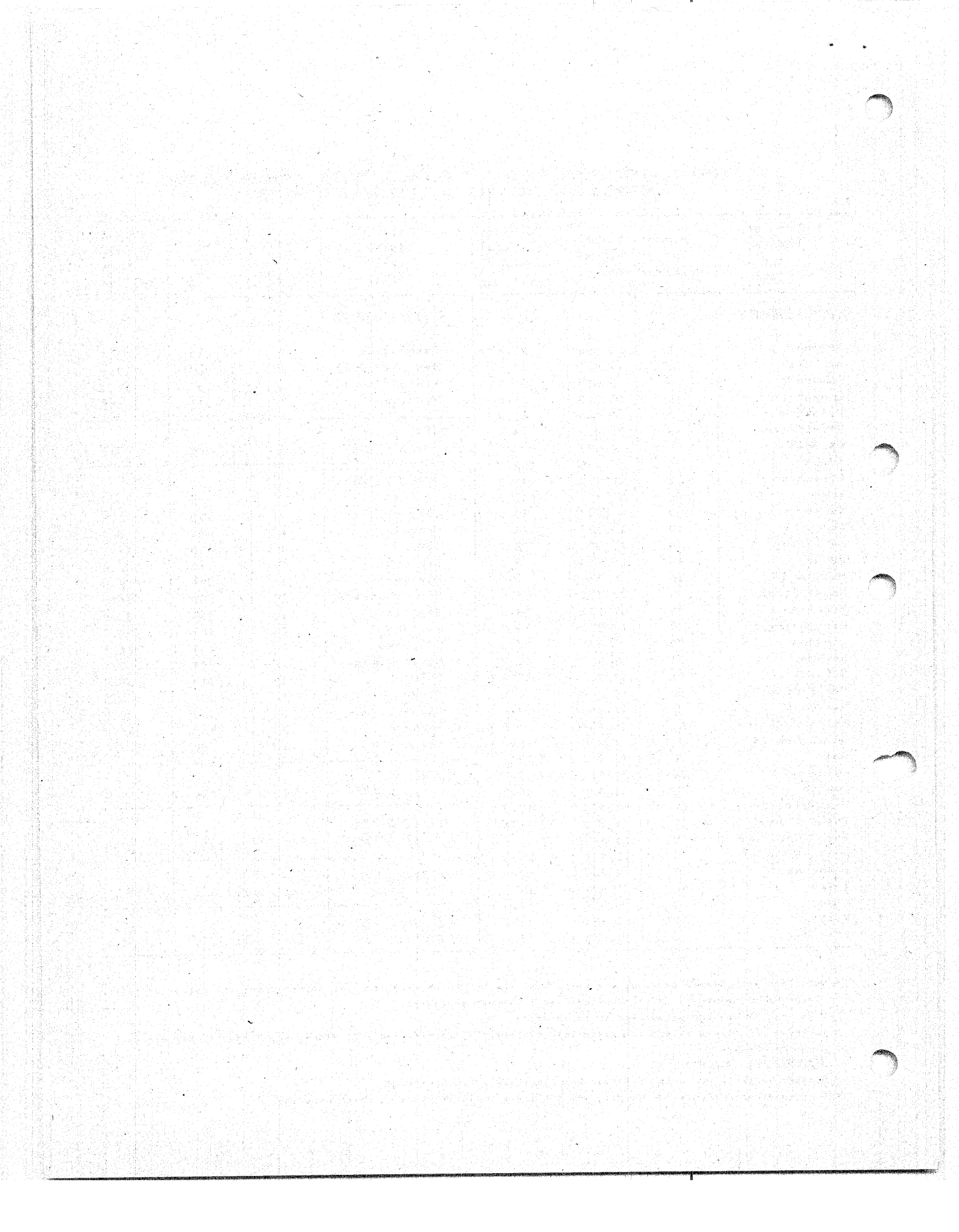


TABLE 2.--REVISED SUMMARY¹ OF AUTOMATIC TRAFFIC RECORDER DATA FOR OCTOBER
1943 INCLUDING 621 STATIONS AND 46 STATES

P-708

Geographic division and State	Number of stations	Percent decrease from October 1942	Geographic division and State	Number of stations	Percent decrease from October 1942
<i>NEW ENGLAND</i>	66	13.0	<i>EAST SOUTH CENTRAL</i>	33	17.4
Connecticut	21	15.0	Alabama	10	11.5
Maine	10	10.5	Kentucky	12	24.8
Massachusetts	9	9.4	Mississippi	8	7.2
New Hampshire	18	12.7	Tennessee	3	21.5
Rhode Island	3	11.1	<i>WEST SOUTH CENTRAL</i>	115	16.3
Vermont	5	17.6			
<i>MIDDLE ATLANTIC</i>	41	17.3	Arkansas	20	23.9
			Louisiana ³	6	10.4
New York	12	13.0	Oklahoma	20	20.4
Pennsylvania	29	20.2	Texas	69	14.6
<i>SOUTH ATLANTIC</i>	88	1.5	<i>MOUNTAIN</i>	61	19.7
Delaware	4	14.3	Arizona	4	16.8
Florida	19	+11.6	Colorado	3	11.9
Georgia	9	+10.5	Idaho	7	12.9
Maryland	17	1.1	Montana	14	13.0
North Carolina ^{3 4}	18	+ 2.9	Nevada	13	39.2
South Carolina	6	+ 4.1	New Mexico	12	10.1
Virginia	5	16.9	Utah	6	19.2
West Virginia	10	12.5	Wyoming	2	33.5
<i>EAST NORTH CENTRAL</i>	94	22.2	<i>PACIFIC</i>	20	17.6
Illinois	2	25.1	California	8	13.1
Indiana	23	19.0	Oregon	3	25.2
Michigan	28	23.5	Washington	9	19.8
Ohio	30	20.3	<i>TOTAL - 46 STATES²</i>	621	16.5
Wisconsin	11	27.4			
<i>WEST NORTH CENTRAL</i>	103	24.2	<i>STATE HIGHWAYS</i>	584	16.5
Iowa	36	26.7	<i>LOCAL HIGHWAYS</i>	37	14.1
Kansas ³	9	22.5	<i>RATIONED MAY 1942</i>	170	7.9
Missouri	27	24.5	<i>RATIONED DECEMBER 1942</i>	451	20.1
Nebraska	12	26.9			
North Dakota	10	11.6			
South Dakota	9	18.4			

1 Combined State and local highways.

2 Includes all States except the following: Minnesota and New Jersey

STATIONS NOT INCLUDED:

3 Defence activity - 1 each in Kansas and North Carolina, 2 in Louisiana.

4 Occasional high counts due to military activities - 12 stations in North Carolina.

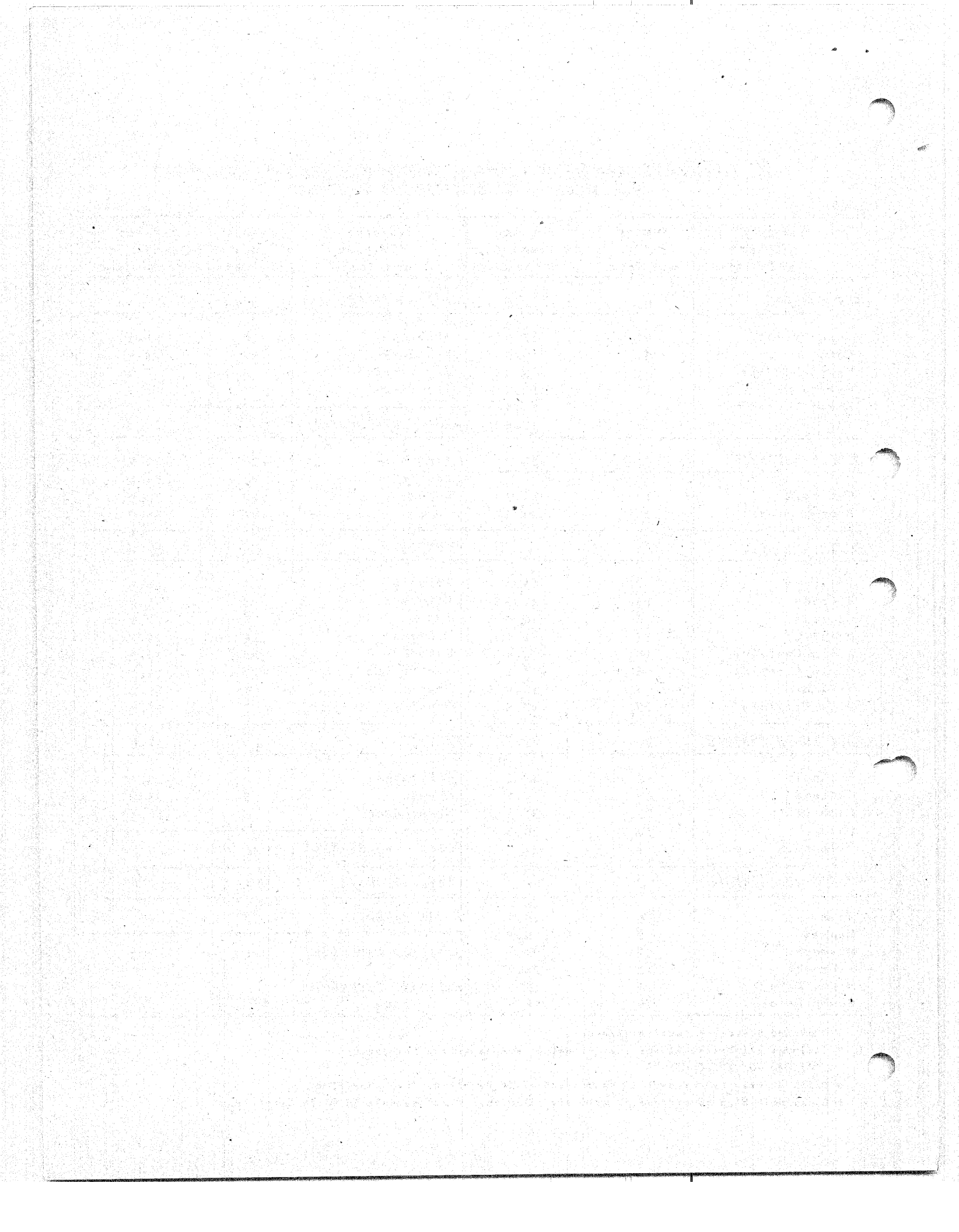


TABLE 3.--TRAFFIC VOLUME DATA FOR NOVEMBER 1943 BY VEHICLE TYPES, COMPARED WITH SIMILAR INFORMATION FOR NOVEMBER 1942 AT TOLL FACILITIES. WHERE AVAILABLE, COMPARISONS ARE SHOWN FOR 1941

AREA RATIONED MAY 1942									
	November 1943			Percentage change from 1942			Percentage change from 1941		
	Total	Passenger cars	Trucks and busses	Total	Passenger cars	Trucks and busses	Total	Passenger cars	Trucks and busses
11 facilities - Maine to Florida	1,720,967	1,445,414	275,553	- 3.3	- 3.3	- 3.0	-27.3	-31.3	+ 4.6
TOTAL - 14 facilities Maine to Florida	1,785,317	1,500,788	284,529	- 3.5	- 3.6	- 2.9			
Miscellaneous locations not included above:									
41 drawbridges in eastern North Carolina ² (not toll)	23,954	20,383	3,571	+ 8.1	+ 8.9	+ 3.6	-26.1	-29.7	+ 4.4
Summer Traffic Tunnel - Boston first two weeks	202,187	183,867	18,320	-10.2	-10.7	- 4.2	-26.5	-27.6	- 13.8
11 stations in Washington, D.C. (not toll) ³	216,870	---	---	- 6.9	--	--	-27.5	--	--
3 stations in Detroit, Michigan 3 weeks (not toll) ⁴	843,320	---	---	-20.6	--	--			
Fleetwood Viaduct, Westchester County, New York	148,351	148,351	---	-13.8	-13.8	--	-57.0	-57.0	--
Pennsylvania Turnpike	79,737	54,590	25,147	-15.5	-19.6	- 5.0	-56.1	-64.7	- 6.7
AREA RATIONED DECEMBER 1942									
3 facilities on eastern Canadian Border	101,410	90,023	11,387	-12.7	-15.0	+10.6	-24.3	-27.9	+25.6
2 facilities in the Great Lakes area	69,180	42,574	26,606	-22.5	-42.9	+81.4	-25.7	-47.3	+115.7
Subtotal - 5 facilities	170,590	132,597	37,993	-17.0	-26.5	+52.2	-24.9	-35.5	+77.6
8 facilities on the Ohio River	347,182	271,313	75,869	-21.2	-26.5	+ 6.1	-30.7	-35.0	- 9.8
11 facilities in the Ohio River area	138,444	106,085	32,359	- 9.6	-14.9	+13.6	-21.5	-26.1	- 1.5
Subtotal - 19 facilities	485,626	377,398	108,228	-18.2	-23.6	+ 8.3	-28.3	-32.7	- 7.4
7 facilities on the Mississippi and St. Croix Rivers, St. Louis and north	719,872	531,166	188,706	-23.8	-27.8	- 9.8	-34.0	-38.6	-16.9
4 facilities on the Mississippi River south of St. Louis	96,379	64,252	32,127	- 4.7	- 7.2	+ 0.5			
Subtotal - 11 facilities	816,251	595,418	220,833	-22.0	-26.0	- 8.4			
4 facilities on the Missouri River	97,304	73,309	23,995	-15.7	-20.2	+ 1.7	-18.5	-21.7	- 7.0
2 facilities in the Missouri River area	1,968	1,510	458	-25.1	-33.7	+30.1	-47.7	-51.2	-31.5
Subtotal - 6 facilities	99,272	74,819	24,453	-15.9	-20.5	+ 2.2	-19.4	-22.6	- 7.6
3 facilities in California	1,742,887	1,535,216	207,671	-18.9	-21.2	+ 3.3	-17.2	-21.1	+29.0
4 facilities in the Washington-Oregon area	181,177	151,229	29,948	-11.9	-15.7	+13.9	- 9.2	-15.3	+42.5
Subtotal - 7 facilities	1,924,064	1,686,445	237,619	-18.3	-20.7	+ 4.6	-16.5	-20.6	+30.5
TOTAL - 48 facilities in the area rationed December 1942	3,495,803	2,866,677	629,126	-19.1	-22.6	+ 1.9			
46 of the 48 facilities for which data were reported for 1941	3,444,007	2,836,123	607,884	-19.2	-22.7	+ 2.3	-23.2	-27.3	+ 4.3
6 facilities reporting only total traffic	402,247			- 5.7					

1. These facilities have comparative data for 1941, 1942, and 1943 and are included in the 14 facilities from Maine to Florida.
2. Total of one 8-hour weekday and one 8-hour Sunday count at 41 drawbridges.
3. Based on weekday traffic.
4. Not located in the eastern area, but listed here to show comparison with other city traffic.

Faint, illegible text, possibly bleed-through from the reverse side of the page. The text is arranged in several columns and appears to be a formal document or report.

PERCENT OF TRAFFIC IN CORRESPONDING MONTH, 1941

TRAFFIC AT AUTOMATIC TRAFFIC RECORDERS, 1940-1943

