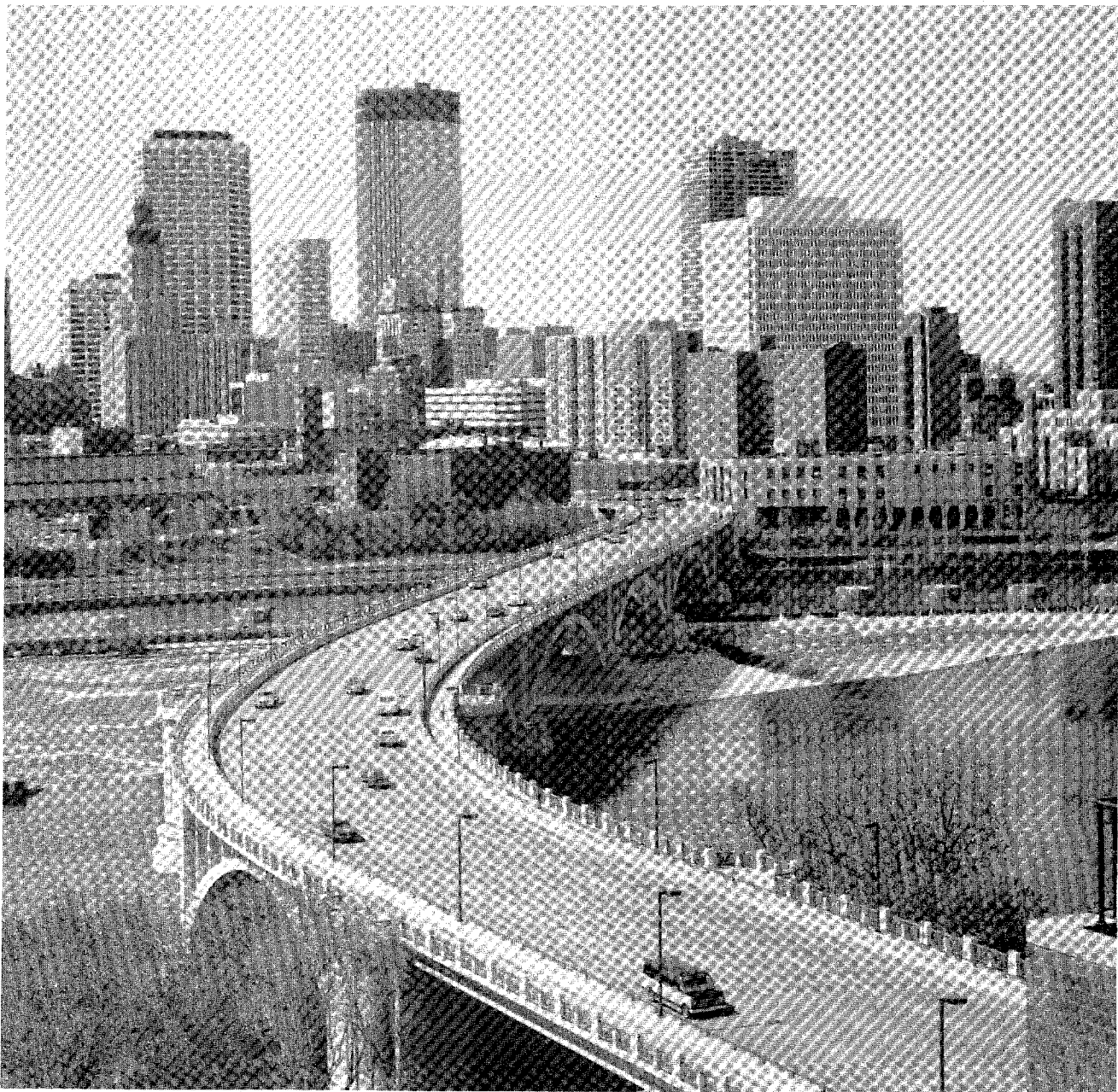




U.S. Department
of Transportation
**Federal Highway
Administration**

Selected **Highway Statistics and Charts** 1984



SELECTED HIGHWAY STATISTICS & CHARTS — 1984

MOTOR FUEL - Highway Use of Gasoline up 1.5 Percent; Special Fuels (Diesel) Use up 8.3 Percent

Highway use of motor fuel in 1984 totaled 118.7 billion gallons, an increase of 2.4 percent from 1983. In 1985, highway use of motor fuel is expected to increase by about 1.7 percent. Motor fuel revenues increased 13.1 percent from 1983, reflecting the large number of tax increases which occurred in 1983 and 1984. Motor fuel revenues are expected to increase by about 8.7 percent in 1985, reflecting additional rate increases in 1985 and the continuing influence of those which took effect during 1984.

The increase in motor fuel usage reflects a continued growth in travel and occurred despite an increase in the fuel efficiency of the vehicle fleet from 14.29 MPG in 1983 to 14.46 MPG in 1984.

MOTOR-VEHICLE REGISTRATIONS - Motor-Vehicle and Motor-Carrier Revenue Annual Percentage Increase Highest Since 1976.

Motor-vehicle registrations in the Nation increased from 163,809,668 in 1983 to 166,497,670 in 1984, an increase of 1.6 percent. Motor-vehicle and motor-carrier revenues increased 15.4 percent primarily due to increases in fees. Motor-vehicle registrations for 1985 are expected to exceed 1984 by 2.2 percent for a total of 170,237,000. Motor-vehicle and motor-carrier revenues are expected to increase by 7.3 percent in 1985.

DRIVER LICENSING - Number of Licensed Drivers up 0.7 Percent

The 155.4 million total licensed drivers in 1984 reflects a 0.7 percent increase over 1983. An increase of 1.8 percent is expected in 1985. Eighty-four percent of all persons of driving age are licensed to drive.

HIGHWAY FINANCE - Total Highway-User Imposts Increased by Over 19 Percent; Highway Capital Expenditures Increased by 12 Percent

Highway-user imposts, consisting of motor-fuel taxes, motor-vehicle taxes and fees, and highway tolls, increased by \$5.4 billion from 1983 to 1984. These revenues, totaling over \$33 billion, accounted for 61.3 percent of the total receipts for highways by all units of government in 1984. Total receipts exceeded \$50 billion for the first time (actually \$53.9 billion), an increase of 12.1 percent over 1983. Receipts from nonuser sources—that is, general revenues, property taxes, investment income and miscellaneous receipts—totaling \$17.3 billion, recorded a slight decline from 1983. Highway bond proceeds amounted to \$3.3 billion for 1984, an increase of over \$700 million from 1983.

Total highway expenditures amounted to slightly more than \$50 billion in 1984, up \$4 billion from 1983. Capital outlay increased by \$2.5 billion, or 12.4 percent, to \$22.7 billion. However, due to the resumption of inflation in highway construction prices, the real increase in highway improvements was only 6 percent. Highway maintenance and traffic service expenditures amounted to \$15 billion, an increase of 5.6 percent from 1983; however, due to inflation, the real increase in highway maintenance activity amounted to about 1 percent over 1983.

Total receipts for highways by all units of government exceeded expenditures by \$3.7 billion in 1984 compared with \$2 billion in 1983, resulting in a total increase in reserves of \$5.7 billion for years 1983 and 1984. These funds are expected to be reflected in significantly increased expenditures (notably capital outlay) in 1985 and beyond.

For the 50 States and D.C., highway-user imposts accounted for 80 percent of the \$26.5 billion in State highway receipts for 1984. State highway receipts from user fees increased by \$2.4 billion in 1984, whereas nonuser sources decreased by 11 percent. These changes reflected a greater reliance on user charges to finance State highway programs. State highway program costs reached nearly \$30 billion (excluding grants-in-aid to local governments) in 1984, an increase of \$3 billion or 11 percent over 1983. Highway capital outlay (\$17 billion) continues to account for an increasing share of total State expenditures—56.9 percent for 1984, a gain of 2 percent from 1983.

ROADWAY MILEAGE AND HIGHWAY TRAVEL - Travel Up 3.6 Percent

Existing public roads and streets in the United States, as of December 31, 1984, totaled approximately 3.90 million miles, an increase of 0.3 percent from 1983.

Highway travel in the United States increased to an estimated 1,717 billion vehicle miles in 1983—an increase of about 3.6 percent from the previous year.

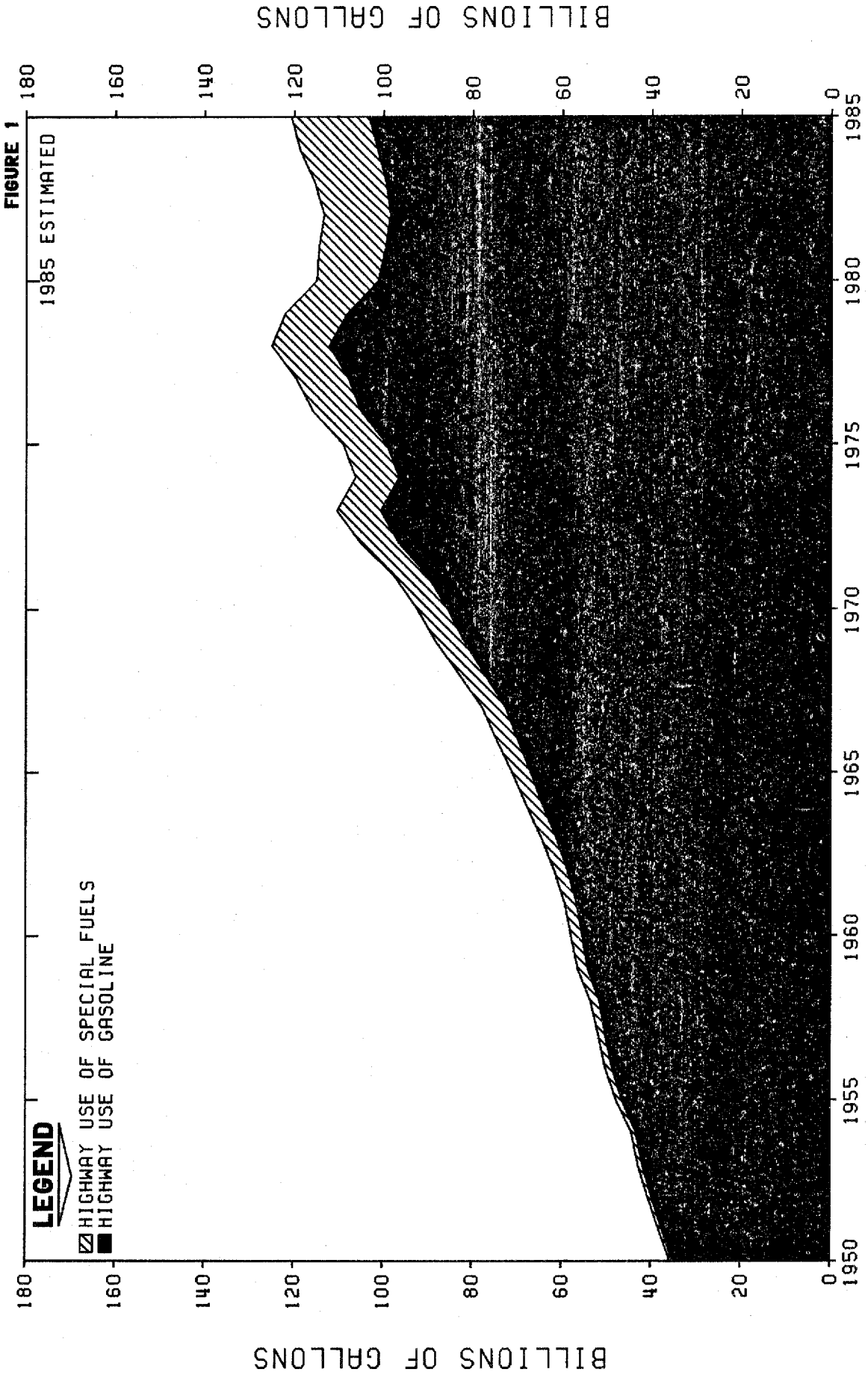
The Interstate System accounts for about 1 percent of the Nation's total route mileage and carries 20 percent of the travel. The arterial class highways (including Interstate) represent 10 percent of the mileage and carry 69 percent of the travel. All arterial and collector highways combined, which include 31 percent of the Nation's mileage, carry 87 percent of the travel.

MISCELLANEOUS

Expenditures per mile average \$19,268, and \$6,478 per mile for capital outlay and maintenance respectively. State highway-user revenue per 1,000 vehicle miles of travel averaged \$13.70 for all States.

HIGHWAY USE OF MOTOR FUEL IN THE UNITED STATES

1950 - 1985



MOTOR-FUEL USE ¹

(THOUSANDS OF GALLONS)

TABLE SS84-1
OCTOBER 1985

STATE	1984 2/				1985 ESTIMATE				HIGHWAY PERCENT CHANGE 1985 1984
	HIGHWAY USE			NON- HIGHWAY GASOLINE	HIGHWAY USE			NON- HIGHWAY GASOLINE	
	GASOLINE	SPECIAL FUEL	TOTAL		GASOLINE	SPECIAL FUEL	TOTAL		
ALABAMA	1,834,786	355,297	2,190,083	64,162	1,805,000	357,000	2,162,000	63,000	-1.3
ALASKA	215,914	60,445	276,635	29,757	226,000	57,000	283,000	31,000	2.4
ARIZONA	1,448,887	235,282	1,684,169	41,078	1,501,000	272,000	1,773,000	42,000	5.3
ARKANSAS	1,103,456	298,967	1,402,423	72,359	1,102,000	309,000	1,411,000	73,000	0.6
CALIFORNIA	11,126,075	1,438,088	12,564,163	278,692	11,393,000	1,361,000	12,754,000	285,000	1.5
COLORADO	1,393,466	207,760	1,601,226	52,655	1,451,000	200,000	1,651,000	55,000	3.1
CONNECTICUT	1,302,421	134,229	1,436,720	21,930	1,347,000	128,000	1,475,000	23,000	2.7
DELAWARE	309,775	47,896	357,671	9,501	319,000	54,000	373,000	10,000	4.3
DIST. OF COL.	173,175	20,709	193,884	7,490	181,000	20,000	201,000	8,000	3.7
FLORIDA	5,052,157	688,430	5,740,587	181,767	5,259,000	713,000	5,972,000	189,000	4.0
GEORGIA	2,991,125	648,129	3,639,254	79,200	3,087,000	691,000	3,778,000	80,000	3.8
HAWAII	316,537	18,478	335,015	12,378	294,000	18,000	312,000	11,000	-6.9
IDAHO	411,293	96,105	507,398	42,047	396,000	100,000	496,000	40,000	-2.2
ILLINOIS	4,359,457	580,743	4,940,200	150,337	4,599,000	559,000	5,158,000	156,000	4.4
INDIANA	2,405,539	711,417	3,166,956	92,503	2,504,000	783,000	3,287,000	95,000	3.8
IOWA	1,270,119	321,639	1,591,758	114,110	1,274,000	301,000	1,575,000	115,000	-1.1
KANSAS	1,145,886	277,693	1,423,579	81,751	1,131,000	264,000	1,395,000	80,000	-2.0
KENTUCKY	1,690,290	338,029	2,028,319	59,950	1,560,000	321,000	1,981,000	58,000	-2.3
LOUISIANA	2,090,737	369,346	2,460,083	75,806	1,986,000	351,000	2,337,000	71,000	-5.0
MAINE	500,345	113,124	613,469	27,594	516,000	116,000	632,000	28,000	3.0
MARYLAND	1,906,998	244,989	2,151,987	41,558	1,945,000	254,000	2,199,000	43,000	2.2
MASSACHUSETTS	2,272,621	245,691	2,518,312	41,373	2,309,000	243,000	2,552,000	42,000	1.3
MICHIGAN	3,807,113	434,834	4,241,947	182,380	3,788,000	455,000	4,243,000	182,000	-
MINNESOTA	1,880,174	292,567	2,172,741	183,633	1,952,000	299,000	2,251,000	191,000	3.6
MISSISSIPPI	1,108,644	273,399	1,382,043	48,982	1,177,000	295,000	1,472,000	52,000	6.5
MISSOURI	2,461,910	450,337	2,912,247	111,001	2,487,000	457,000	2,944,000	112,000	1.1
MONTANA	416,324	117,012	533,336	34,828	413,000	111,000	524,000	35,000	-1.8
NEBRASKA	712,833	202,825	915,658	57,456	743,000	208,000	951,000	60,000	3.9
NEVADA	479,257	77,741	556,998	20,187	480,000	81,000	561,000	20,000	0.7
NEW HAMPSHIRE	424,697	41,718	466,415	6,051	446,000	40,000	486,000	6,000	4.2
NEW JERSEY	3,257,372	439,916	3,697,288	57,799	3,192,000	451,000	3,643,000	57,000	-1.5
NEW MEXICO	729,741	172,678	902,419	21,189	771,000	169,000	940,000	22,000	4.2
NEW YORK	4,731,083	562,082	5,293,165	128,273	5,204,000	547,000	5,751,000	141,000	8.7
NORTH CAROLINA	2,862,069	515,582	3,377,651	140,310	2,934,000	506,000	3,440,000	144,000	1.8
NORTH DAKOTA	337,317	94,195	431,512	43,883	354,000	94,000	448,000	45,000	3.8
OHIO	4,467,636	833,028	5,300,664	217,345	4,432,000	857,000	5,289,000	215,000	-0.2
OKLAHOMA	1,707,996	406,842	2,114,838	95,470	1,747,000	397,000	2,144,000	98,000	1.4
OREGON	1,203,781	226,372	1,430,153	59,120	1,189,000	228,000	1,417,000	58,000	-0.9
PENNSYLVANIA	4,304,743	755,078	5,059,821	78,925	4,391,000	788,000	5,179,000	79,000	2.4
RHODE ISLAND	361,609	33,265	394,874	6,092	367,000	33,000	400,000	6,000	1.3
SOUTH CAROLINA	1,538,453	299,577	1,838,030	57,278	1,588,000	313,000	1,901,000	59,000	3.4
SOUTH DAKOTA	331,537	99,055	430,592	52,849	347,000	102,000	449,000	55,000	4.3
TENNESSEE	2,385,707	510,624	2,896,331	79,731	2,256,000	514,000	2,780,000	75,000	-4.0
TEXAS	8,170,141	1,577,178	9,747,319	300,394	8,366,000	1,566,000	9,932,000	310,000	1.9
UTAH	675,168	134,241	809,409	20,071	641,000	131,000	772,000	19,000	-4.6
VERMONT	240,683	35,187	275,870	9,414	237,000	35,000	272,000	9,000	-1.4
VIRGINIA	2,596,363	438,878	3,035,241	60,681	2,661,000	465,000	3,126,000	61,000	3.0
WASHINGTON	1,919,947	251,134	2,171,081	64,258	1,824,000	246,000	2,070,000	60,000	-4.7
WEST VIRGINIA	770,065	124,609	894,674	25,692	770,000	118,000	895,000	25,000	-
WISCONSIN	1,873,786	352,423	2,226,209	128,596	1,911,000	349,000	2,260,000	132,000	1.5
WYOMING	338,231	115,425	453,656	15,403	321,000	116,000	439,000	15,000	-3.2
TOTAL	101,415,509	17,320,288	118,735,797	3,885,289	103,291,000	17,445,000	120,736,000	3,943,000	1.6
BBL/DAY	6,615,000	1,130,000	7,745,000	253,000	6,738,000	1,138,000	7,876,000	257,000	-

1/ THESE ESTIMATES WERE MADE BY THE FEDERAL HIGHWAY ADMINISTRATION ON THE BASIS OF STATE REPORTS OF MOTOR-FUEL CONSUMPTION IN THE EARLY MONTHS OF 1985, AND INFORMATION AVAILABLE ON CURRENT TRENDS, MOTOR-FUEL PRODUCTION AND OTHER FACTORS. THESE DATA ARE COMPARABLE TO THAT SHOWN IN TABLES MF-21, 25, AND 26.

2/ COMPILED FOR THE CALENDAR YEAR FROM AN ANALYSIS OF MOTOR-FUEL USE.

STATE MOTOR-FUEL RECEIPTS

COMPILED FOR THE CALENDAR YEAR FROM REPORTS
OF STATE AUTHORITIES AND OTHER SOURCES

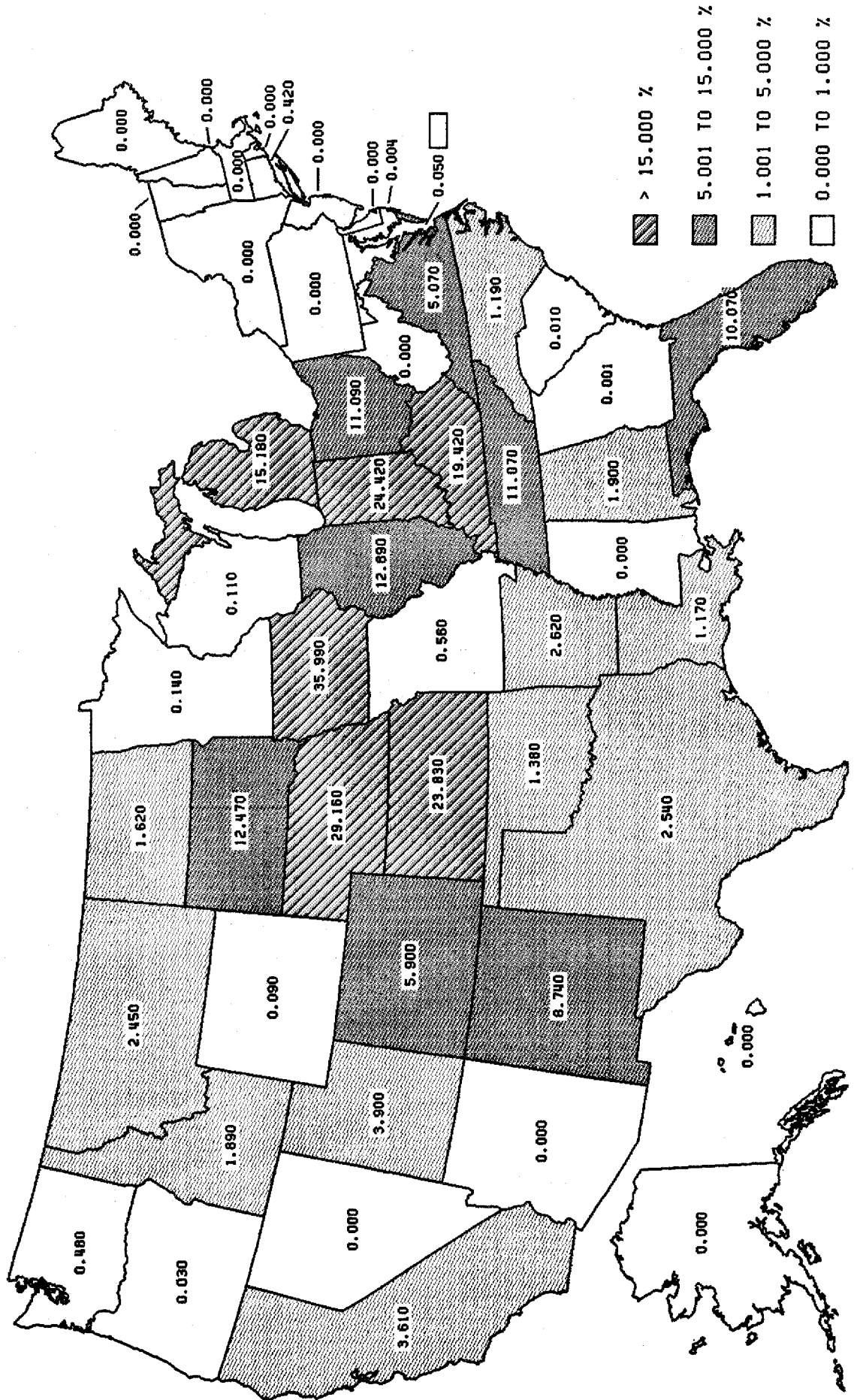
(THOUSANDS OF DOLLARS)

TABLE SS84-2
OCTOBER 1985

STATE	1 9 8 4						ESTIMATED 1985			PERCENT CHANGE TOTAL RECEIPTS	TAX RATE AS OF OCT. 1, 1985 (CENTS PER GALLON)	
	NET GALLONAGE TAX RECEIPTS	OTHER RECEIPTS	TOTAL	TOTAL RECEIPTS PER HIGHWAY GALLON (CENTS)	TAX RATE DEC. 31 (CENTS PER GALLON)		NET GALLONAGE TAX RECEIPTS	OTHER RECEIPTS	TOTAL		1985 1984	GASOLINE
					GASOLINE	DIESEL AND L.P.G.						
ALABAMA	249,308	32,708	282,016	12.88	13	14 & 0	284,630	37,286	321,916	14.1	13	14 & 0
ALASKA	24,229	3,019	27,248	9.86	8	8 & 0	22,640	2,830	25,470	-6.5	8	8 & 0
ARIZONA	208,676	3,636	212,312	12.61	13	13	230,490	3,918	234,408	10.4	13	13
ARKANSAS	141,600	-	141,600	10.10	9.5	10.5 & 7.5	174,830	-	174,830	23.5	13.5	12.5 & 11.5
CALIFORNIA	1,116,190	4,335	1,120,525	8.92	9	9 & 6	1,147,860	4,591	1,152,451	2.8	9	9 & 6
COLORADO	195,470	102	195,572	12.21	12	13	195,767	98	195,865	0.1	12	13
CONNECTICUT	197,870	3,245	201,115	14.00	15	15	228,780	3,660	232,440	15.5	16	16
DELAWARE	39,100	21	39,121	10.94	11	11	41,030	20	41,050	4.9	11	11
DIST. OF COL.	26,822	38	26,860	13.85	15.5	15.5	31,155	44	31,199	16.1	15.5	15.5
FLORIDA	535,050	10,767	545,817	9.51	9.7	9.7	558,248	11,165	569,413	4.3	9.7	9.7
GEORGIA	273,048	5,710	278,758	7.66	7.5	7.5	283,350	5,950	289,300	3.8	7.5	7.5
HAWAII	28,845	10	28,855	8.61	8.5	8.5 & 6	30,420	9	30,429	5.5	11	12 & 8
IDAHO	75,661	397	76,058	14.99	14.5	14.5	71,192	360	72,280	-5.0	14.5	14.5
ILLINOIS	589,849	73,329	663,178	13.42	12	14.5 & 12	658,725	81,682	740,407	11.6	13	15.5 & 13
INDIANA	332,101	6,585	338,686	10.87	11.1	11.1	416,434	8,329	424,763	25.4	14	15 & 14
IOWA	191,890	873	192,763	12.11	13	15.5 & 13	217,602	1,088	218,690	13.5	15	16.5 & 15
KANSAS	142,993	149	143,142	10.06	11	11 & 10	146,289	146	146,435	2.3	11	13 & 10
KENTUCKY	197,404	-	197,404	9.73	10	10	186,812	-	186,810	-4.4	10	10
LOUISIANA	289,732	1,050	290,782	11.82	16	16	373,920	1,346	375,266	29.0	16	16
MAINE	86,023	40	86,063	14.03	14	14	88,480	44	88,524	2.8	14	14
MARYLAND	289,325	14,133	303,458	14.10	13.5	13.5	296,865	14,546	311,411	2.6	13.5	13.5
MASSACHUSETTS	276,076	5,333	281,609	11.18	11	11 & 6.9	280,720	5,614	286,334	1.7	11	11 & 5.8
MICHIGAN	586,561	3	586,564	13.83	15	15	613,343	-	613,343	4.6	15	15
MINNESOTA	344,961	968	345,929	15.92	17	17	382,670	10,715	393,385	13.7	17	17
MISSISSIPPI	128,983	7,901	136,884	9.90	9	10 & 8	135,430	8,261	143,691	5.0	9	10 & 8
MISSOURI	200,536	1,297	201,833	6.93	7	7	206,080	1,235	207,316	2.7	7	7
MONTANA	81,855	502	82,357	15.44	15	17 & 0	80,820	485	81,305	-1.3	15	17 & 0
NEBRASKA	123,385	21	123,406	13.48	14.7	14.7	140,599	28	140,627	13.6	17.4	17.4
NEVADA	68,451	317	68,768	12.35	12	12	70,125	323	70,448	2.4	13	13
NEW HAMPSHIRE	64,543	4,034	68,577	14.70	14	14	68,040	4,218	72,258	5.4	14	14
NEW JERSEY	307,557	2,736	310,293	8.39	8	8 & 4	295,950	2,664	298,614	-3.8	8	11 & 4
NEW MEXICO	97,367	2,990	100,357	11.12	11	11	95,690	2,966	98,656	-1.7	11	11
NEW YORK	411,604	25	411,629	7.78	8	10 & 8	471,020	-	471,020	14.4	8	10 & 8
NORTH CAROLINA	406,994	14,472	421,466	12.48	12	12	412,800	14,696	427,496	1.4	12	12
NORTH DAKOTA	54,047	606	54,653	12.67	13	13	58,240	641	58,881	7.7	13	13
OHIO	621,540	-	621,540	11.73	12	12	620,054	-	620,054	-0.2	12	12
OKLAHOMA	169,988	2,154	172,142	8.14	9	9	197,680	2,570	200,250	16.3	10	10
OREGON	113,152	392	113,544	7.94	9	9	122,900	430	123,330	8.6	10	10
PENNSYLVANIA	894,096	3,969	898,065	17.75	12	12	919,272	4,045	923,317	2.8	12	12
RHODE ISLAND	50,010	-	50,010	12.66	13	13	52,000	-	52,000	4.0	13	13
SOUTH CAROLINA	242,580	4,094	246,674	13.42	13	13	247,130	4,201	251,331	1.9	13	13
SOUTH DAKOTA	55,449	53	55,502	12.89	13	13 & 11	56,843	57	56,900	2.5	13	13 & 11
TENNESSEE	261,063	32,597	293,660	10.14	10	13 & 9	316,080	39,510	355,590	21.0	13	13
TEXAS	668,727	-	668,727	6.86	10	10	993,200	-	993,200	48.5	10	10
UTAH	94,797	600	95,397	11.42	14	14	108,080	-	108,728	14.0	14	14
VERMONT	37,735	-	37,735	13.68	13	14 & 0	35,710	648	35,710	-5.4	13	14 & 0
VIRGINIA	412,021	194	412,215	13.58	11	11	424,511	212	424,723	3.0	11	11
WASHINGTON	350,395	34	350,429	16.14	18	18	372,600	-	372,600	13.5	18	18
WEST VIRGINIA	100,870	56,089	156,959	17.54	10.5	10.5	93,975	52,250	146,225	-6.8	10.5	10.5
WISCONSIN	355,830	-	355,830	15.98	16	16	369,962	-	369,962	4.0	16.5	16.5
WYOMING	33,698	1,957	35,655	7.86	8	0	25,680	1,489	27,169	-23.8	8	0
TOTAL	12,846,057	303,685	13,149,742	11.07	10.58	11.38	13,953,451	334,371	14,287,822	8.7	-	-
PERCENT CHANGE FROM PRIOR YEAR	11.6	155.3	13.1	9.8	8.5	10.8	3.7	149.1	5.1	-	-	-

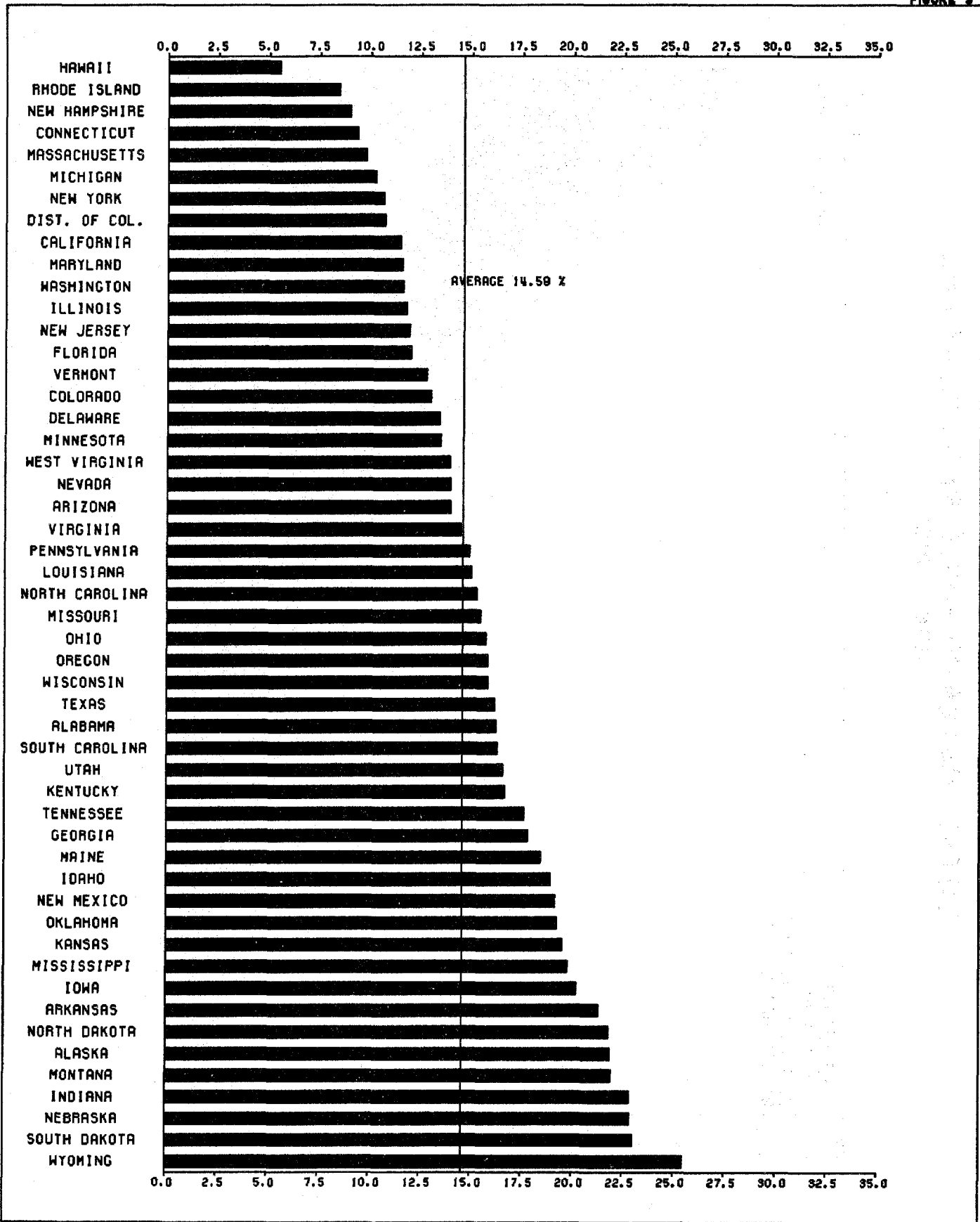
FIGURE 2

GASOLIN AS A PERCENT OF HIGHWAY USE OF GASOLINE - 1984

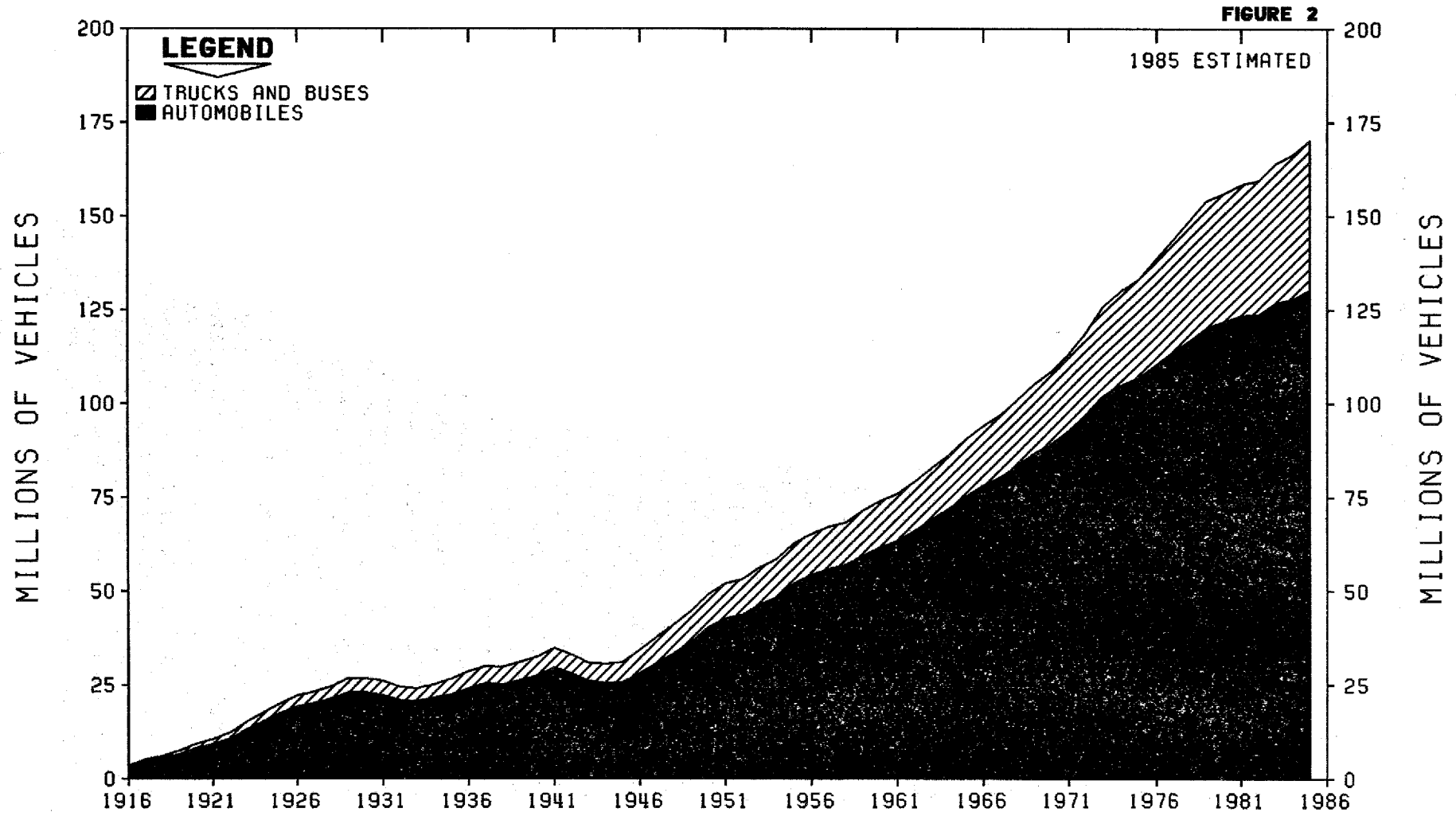


**SPECIAL FUEL AS A PERCENT
OF TOTAL HIGHWAY USE OF MOTOR FUEL - 1984**

FIGURE 2



TOTAL MOTOR-VEHICLE REGISTRATIONS 1916 - 1985



STATE MOTOR-VEHICLE AND MOTOR-CARRIER REVENUES

TABLE SS84-4
OCTOBER 1985

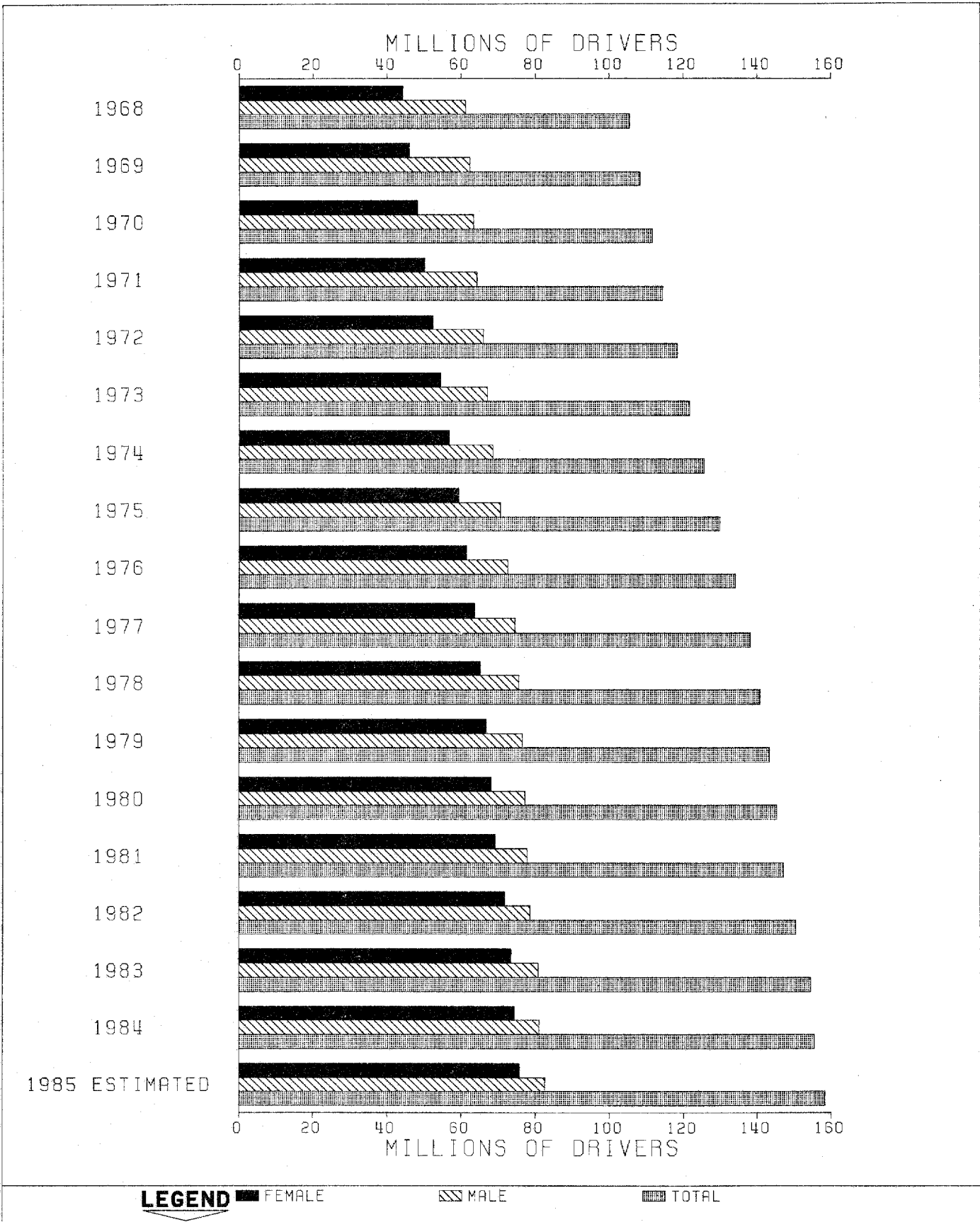
(THOUSANDS OF DOLLARS)

STATE	1984 1/					1985 (ESTIMATE)					PERCENT CHANGE
	MOTOR-VEHICLE REGISTRATION FEES	OTHER MOTOR-VEHICLE FEES 2/	MOTOR-CARRIER TAXES 3/	MISCELLANEOUS RECEIPTS 4/	TOTAL	MOTOR-VEHICLE REGISTRATION FEES	OTHER MOTOR-VEHICLE FEES 2/	MOTOR-CARRIER TAXES 3/	MISCELLANEOUS RECEIPTS 4/	TOTAL	
	(1)	(2)	(3)	(4)	(5)	(6)	(7)	(8)	(9)	(10)	1985 1984
ALABAMA	72,323	14,338	500	7,749	94,910	101,053	14,322	420	8,000	123,795	30.4
ALASKA	15,050	1,641	643	1,591	18,925	15,639	2,080	393	1,790	19,902	5.2
ARIZONA	100,854	16,468	72,948	20,515	210,785	101,794	17,181	73,448	23,515	215,938	2.4
ARKANSAS	60,397	6,522	26,932	11,162	105,013	61,138	6,060	28,932	11,950	108,090	2.9
CALIFORNIA	1,544,256	53,543	14,537	409,650	2,021,986	1,602,692	36,340	14,888	415,950	2,069,870	2.4
COLORADO	37,570	17,230	31,606	11,228	97,634	38,832	18,702	34,806	11,925	104,265	6.8
CONNECTICUT	74,897	17,578	55	29,926	122,456	95,038	17,877	60	33,900	146,875	19.9
DELAWARE	13,404	19,459	-	2,048	34,911	13,996	21,407	-	2,550	37,953	8.7
DIST. OF COL.	15,511	24,720	272	4,743	45,346	15,711	27,999	290	4,550	48,550	7.1
FLORIDA	269,974	46,359	3,538	15,001	335,872	284,634	46,371	3,938	17,050	351,993	4.8
GEORGIA	55,573	12,555	2,785	7,613	78,527	57,429	13,829	3,012	9,120	83,390	6.2
HAWAII	25,052	1,972	-	1,443	28,467	25,985	1,396	-	1,500	29,881	1.5
IDAHO	24,028	4,124	15,043	3,094	47,289	24,768	3,295	17,193	3,100	48,356	2.3
ILLINOIS	472,124	30,677	2,468	24,882	530,151	557,291	34,699	2,818	27,880	632,689	19.3
INDIANA	95,805	20,967	1,532	6,725	125,029	104,062	20,675	1,571	7,525	133,833	7.0
IOWA	184,677	13,313	672	19,931	218,593	185,511	14,682	680	21,440	222,313	1.7
KANSAS	67,024	5,486	5,106	5,350	82,976	69,581	5,447	6,000	5,400	86,228	3.9
KENTUCKY	50,647	158,574	39,780	8,674	257,675	50,728	173,509	42,298	10,175	276,710	7.4
LOUISIANA	35,320	16,000	10,908	27,189	89,416	39,466	16,338	11,344	27,250	94,399	5.6
MAINE	32,491	5,798	1,013	7,707	47,009	33,469	8,740	1,123	8,000	51,332	9.2
MARYLAND	88,223	255,900	-	13,004	357,127	91,568	309,152	-	14,750	415,870	16.4
MASSACHUSETTS	79,467	32,538	1,911	23,474	137,390	79,747	24,350	2,091	24,975	131,163	-4.5
MICHIGAN	250,866	18,148	3,177	27,254	299,447	263,552	18,039	3,278	29,750	314,619	5.1
MINNESOTA	183,027	17,540	1,383	18,463	220,413	185,552	14,856	1,493	22,000	224,001	1.6
MISSISSIPPI	47,286	13,787	1,456	5,654	69,183	48,792	13,589	1,986	5,755	70,122	2.8
MISSOURI	117,781	19,741	2,795	9,829	150,146	139,446	23,196	3,095	11,300	177,037	17.9
MONTANA	17,079	7,581	8,335	3,424	36,419	17,178	7,119	9,343	3,325	37,165	2.0
NEBRASKA	46,231	6,605	822	3,384	57,042	46,393	6,730	932	3,690	57,745	1.2
NEVADA	45,019	3,134	8,410	9,140	65,703	45,371	3,547	8,933	10,000	68,851	4.8
NEW HAMPSHIRE	27,332	15,969	1,792	5,184	50,277	28,571	15,760	1,927	5,395	51,443	2.3
NEW JERSEY	204,562	37,635	329	57,212	299,737	204,989	32,512	358	60,215	298,074	-0.6
NEW MEXICO	22,573	32,358	28,739	4,104	87,774	22,484	36,200	29,594	4,500	92,778	5.7
NEW YORK	359,705	58,162	44,218	37,672	499,757	381,974	54,169	46,279	38,275	520,697	4.2
NORTH CAROLINA	151,260	26,427	-	26,408	204,095	154,388	25,605	-	29,400	209,393	2.6
NORTH DAKOTA	38,974	4,996	1,779	3,629	49,378	39,765	5,181	2,017	3,500	50,463	2.2
OHIO	270,021	45,659	54,391	16,625	386,696	274,489	46,160	57,561	18,625	396,835	2.6
OKLAHOMA	173,479	17,089	1,853	8,707	201,128	185,436	16,165	1,931	9,205	214,737	6.8
OREGON	41,532	15,489	83,615	9,311	149,947	38,520	16,755	87,198	19,210	162,683	1.8
PENNSYLVANIA	243,452	105,585	-	136,011	485,049	246,242	120,202	-	147,010	513,454	5.9
RHODE ISLAND	12,517	9,108	1,230	2,206	25,061	12,926	9,866	1,480	2,250	26,522	5.8
SOUTH CAROLINA	39,077	5,606	919	5,804	56,406	50,880	7,307	979	10,605	69,771	23.7
SOUTH DAKOTA	26,068	1,722	-	1,350	29,140	26,333	1,282	-	1,400	29,015	-0.4
TENNESSEE	108,968	27,457	2,713	6,095	145,233	109,807	16,769	2,898	7,195	136,668	-5.9
TEXAS	438,058	781,722	2,667	57,820	1,280,267	645,528	818,864	2,773	65,820	1,532,985	19.7
UTAH	21,022	3,928	1,971	9,875	36,796	21,173	3,880	2,075	10,575	37,703	2.5
VERMONT	19,676	24,184	389	6,138	50,387	20,311	29,396	449	7,000	57,156	13.4
VIRGINIA	117,123	154,956	5,276	29,299	306,654	121,826	171,837	5,300	32,300	331,263	8.0
WASHINGTON	324,017	28,105	6,338	12,990	371,450	337,915	30,902	7,557	13,390	389,765	4.9
WEST VIRGINIA	42,345	76,625	1,512	6,798	127,280	44,474	81,757	1,565	6,800	134,596	5.7
WISCONSIN	125,415	16,190	2,624	20,122	164,351	127,397	15,052	2,600	22,625	168,274	2.4
WYOMING	10,557	1,161	14,917	9,234	35,869	10,606	855	15,368	3,900	36,729	2.4
TOTAL	6,939,791	2,353,431	516,899	1,217,450	11,027,571	7,514,151	2,480,002	544,274	1,294,510	11,832,937	7.3
PERCENT	62.9	21.4	4.7	11.0	100.0	63.5	21.0	4.6	10.9	100.0	

1/ COMPILED FOR CALENDAR YEAR FROM REPORTS OF STATE AUTHORITIES AND OTHER SOURCES.
 2/ INCLUDES OPERATORS AND CHAUFFEURS PERMIT FEES, CERTIFICATE OF TITLE FEES, FINES AND PENALTIES, ESTIMATED SERVICE CHARGES, AND LOCAL COLLECTIONS.
 3/ INCLUDES GROSS RECEIPTS TAXES; MILEAGE, TON-MILE, AND PASSENGER-MILE TAXES; SPECIAL LICENSE FEES AND FRANCHISE TAXES; AND CERTIFICATE OR PERMIT FEES.
 4/ INCLUDES CARAVAN FEES, TRANSFER AND REREGISTRATION FEES, DEALERS LICENSES, FEES FOR OFFICIAL CARS, OVERSIZE AND OVERWEIGHT PERMIT FEES, VEHICLE INSPECTION FEES, DRIVER EXAMINATION FEES, DRIVER LICENSE DUPLICATE AND MISCELLANEOUS FEES, LESS UNCLASSIFIED REFUNDS.

LICENSED DRIVERS, BY SEX

FIGURE 5



DRIVER LICENSES IN FORCE

COMPILED FROM THE CALENDAR YEAR REPORTS
OF STATE AUTHORITIES AND OTHER SOURCES

TABLE SS84-5
OCTOBER 1985

STATE	1984 (DL-1A) ^{1/}				RATIO OF LICENSED DRIVERS TO PRIVATE AND COMMERCIAL MOTOR VEHICLES REGISTERED	ESTIMATED 1985			PERCENTAGE CHANGE - TOTAL DRIVERS			STATE
	MALE	FEMALE	TOTAL	PERCENT MALE		MALE	FEMALE	TOTAL	1985 1984	1984 1983	1984 1974	
	(1,000)	(1,000)	(1,000)			(1,000)	(1,000)	(1,000)				
ALABAMA	1,285	1,187	2,472	51.98	0.78	1,324	1,223	2,547	3.0	3.3	30.0	ALABAMA
ALASKA	173	132	305	56.60	0.86	177	136	313	2.5	5.5	70.4	ALASKA
ARIZONA	1,221	1,035	2,257	54.12	1.08	1,263	1,071	2,334	3.4	3.6	75.8	ARIZONA
ARKANSAS	803	812	1,674	51.52	1.13	877	825	1,702	1.7	1.5	31.9	ARKANSAS
CALIFORNIA	8,942	8,005	16,947	52.77	0.96	9,091	8,144	17,235	1.7	1.8	28.6	CALIFORNIA
COLORADO	1,187	1,082	2,269	52.32	0.83	1,206	1,099	2,305	1.6	1.8	38.1	COLORADO
CONNECTICUT	1,207	1,130	2,337	51.65	1.00	1,243	1,164	2,407	3.0	3.9	30.9	CONNECTICUT
DELAWARE	225	216	440	51.03	0.97	227	217	444	1.0	1.9	18.9	DELAWARE
DIST. OF COL.	205	169	374	54.88	1.69	207	170	377	0.9	1.1	12.7	DIST. OF COL.
FLORIDA	4,222	3,964	8,186	51.57	0.89	4,283	4,026	8,309	1.5	-1.9	65.5	FLORIDA
GEORGIA	2,005	1,897	3,901	51.39	0.88	2,065	1,953	4,018	3.0	4.7	42.0	GEORGIA
HAWAII	321	262	583	55.08	0.93	326	265	591	1.4	1.4	18.5	HAWAII
IDAHO	349	321	669	52.09	0.73	356	327	683	2.1	3.2	24.1	IDAHO
ILLINOIS	3,354	3,332	6,685	50.16	0.89	3,375	3,357	6,732	0.7	-4.3	6.1	ILLINOIS
INDIANA	1,823	1,752	3,574	51.00	0.92	1,843	1,770	3,613	1.1	0.6	12.2	INDIANA
IOWA	951	976	1,927	49.34	0.80	954	979	1,933	0.3	-0.1	4.6	IOWA
KANSAS	854	837	1,692	50.50	0.81	860	842	1,702	0.6	0.7	3.0	KANSAS
KENTUCKY	1,183	1,066	2,249	52.61	0.89	1,204	1,085	2,289	1.8	2.6	29.1	KENTUCKY
LOUISIANA	1,511	1,319	2,830	53.39	0.97	1,542	1,347	2,889	2.1	2.3	39.2	LOUISIANA
MAINE	402	388	791	50.88	1.01	410	395	805	1.8	2.7	21.5	MAINE
MARYLAND	1,478	1,383	2,861	51.66	0.90	1,511	1,413	2,924	2.2	2.2	21.3	MARYLAND
MASSACHUSETTS	1,986	1,846	3,832	51.83	1.02	2,020	1,877	3,897	1.7	4.2	7.4	MASSACHUSETTS
MICHIGAN	3,337	3,055	6,392	52.20	1.02	3,363	3,080	6,443	0.8	0.7	15.5	MICHIGAN
MINNESOTA	1,247	1,150	2,397	52.02	0.82	1,257	1,159	2,416	0.8	1.0	-0.2	MINNESOTA
MISSISSIPPI	952	834	1,785	53.29	1.26	961	843	1,804	1.0	-0.9	29.6	MISSISSIPPI
MISSOURI	1,721	1,634	3,354	51.29	0.95	1,736	1,648	3,384	0.9	0.9	15.3	MISSOURI
MONTANA	260	214	474	54.82	0.71	259	213	472	-0.5	-3.1	-4.2	MONTANA
NEBRASKA	559	539	1,108	51.34	0.90	575	545	1,120	1.1	1.2	6.1	NEBRASKA
NEVADA	355	316	681	53.54	0.94	369	321	690	1.3	0.7	71.1	NEVADA
NEW HAMPSHIRE	369	346	715	51.60	0.83	379	355	734	2.5	2.7	36.4	NEW HAMPSHIRE
NEW JERSEY	2,932	2,688	5,680	52.68	1.19	3,073	2,760	5,833	2.7	4.0	34.7	NEW JERSEY
NEW MEXICO	421	389	810	52.00	0.67	438	404	842	4.0	5.7	15.4	NEW MEXICO
NEW YORK	5,274	4,442	9,716	54.28	1.14	5,342	4,500	9,842	1.3	1.1	10.8	NEW YORK
NORTH CAROLINA	2,073	1,976	4,049	51.20	0.95	2,108	2,010	4,118	1.7	2.1	28.1	NORTH CAROLINA
NORTH DAKOTA	225	209	434	51.86	0.64	227	210	437	0.7	0.5	19.9	NORTH DAKOTA
OHIO	3,820	3,569	7,389	51.70	0.95	3,784	3,539	7,323	-0.8	-0.1	9.0	OHIO
OKLAHOMA	1,117	1,008	2,205	50.66	0.81	1,139	1,109	2,248	1.9	1.5	28.9	OKLAHOMA
OREGON	1,094	985	2,079	52.61	0.97	1,105	995	2,100	1.0	0.6	35.6	OREGON
PENNSYLVANIA	3,956	3,504	7,470	53.09	1.07	4,203	3,715	7,918	0.6	0.4	12.2	PENNSYLVANIA
RHODE ISLAND	312	299	611	51.06	0.99	315	301	616	0.9	1.3	10.1	RHODE ISLAND
SOUTH CAROLINA	1,075	1,024	2,100	51.24	1.00	1,101	1,047	2,148	2.3	4.6	43.5	SOUTH CAROLINA
SOUTH DAKOTA	251	236	487	51.57	0.77	253	237	490	0.6	1.0	18.5	SOUTH DAKOTA
TENNESSEE	1,521	1,457	2,978	51.09	0.85	1,546	1,480	3,026	1.6	1.5	25.6	TENNESSEE
TEXAS	5,729	5,126	10,856	52.78	0.92	5,900	5,282	11,182	3.0	-4.8	49.0	TEXAS
UTAH	471	458	929	50.67	0.87	474	462	936	0.7	0.3	28.8	UTAH
VERMONT	195	176	371	52.54	1.00	199	179	378	1.8	2.8	22.4	VERMONT
VIRGINIA	1,900	1,874	3,773	50.34	0.95	1,932	1,905	3,837	1.7	1.9	28.2	VIRGINIA
WASHINGTON	1,557	1,416	2,973	52.39	0.88	1,598	1,452	3,050	2.6	3.7	40.1	WASHINGTON
WEST VIRGINIA	619	590	1,208	51.20	0.91	628	598	1,226	1.5	-14.7	-1.1	WEST VIRGINIA
WISCONSIN	1,637	1,510	3,148	52.02	1.03	1,663	1,534	3,197	1.6	2.0	18.2	WISCONSIN
WYOMING	195	165	360	54.20	0.75	198	167	365	1.5	-8.6	40.1	WYOMING
TOTAL	81,012	74,379	155,391	52.13	0.95	82,489	75,735	158,224	1.8	0.7	23.7	TOTAL
PERCENT CHANGE FROM PRIOR YEAR	0.3	1.3	0.8	-	-	-	-	-	-	-	-	PERCENT CHANGE FROM PRIOR YEAR

^{1/} TOTALS MAY NOT EQUAL SUM OF PARTS DUE TO ROUNDING.

LICENSED DRIVERS. BY AGE

TABLE SS84-6
OCTOBER 1985

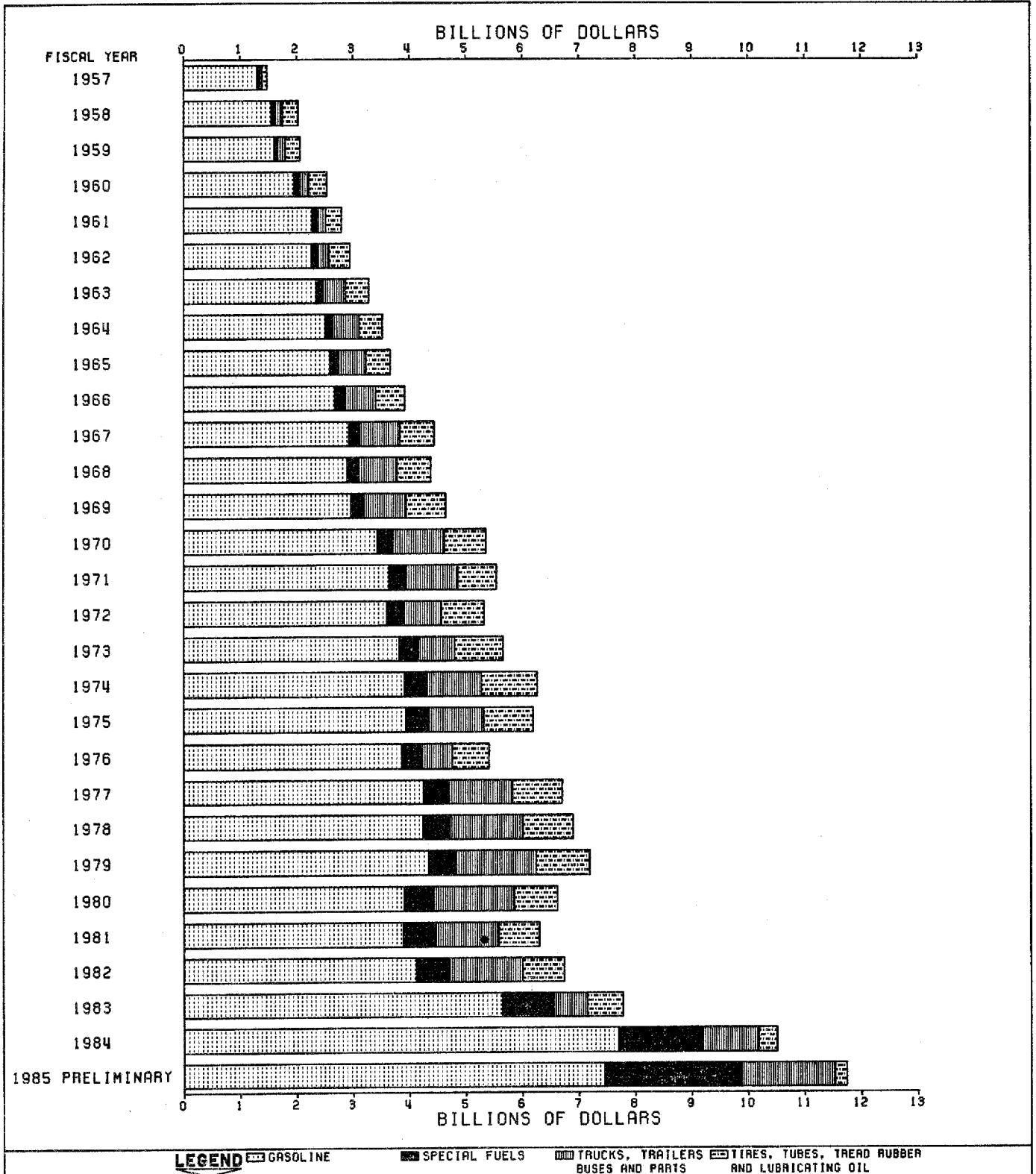
AGE	1984				ESTIMATED 1985			PERCENT CHANGE TOTAL DRIVERS 1974-1984
	MALE	FEMALE	TOTAL	PERCENT MALE	MALE	FEMALE	TOTAL	
	(1,000)	(1,000)	(1,000)		(1,000)	(1,000)	(1,000)	
UNDER 16	60	49	109	55.0	61	50	111	-21.0
16	933	786	1,719	54.3	950	800	1,750	-6.6
17	1,310	1,129	2,439	53.7	1,334	1,150	2,484	-15.0
18	1,535	1,328	2,863	53.6	1,563	1,352	2,915	-8.0
19	1,726	1,510	3,236	53.3	1,757	1,538	3,295	-1.3
(19 AND UNDER)	5,565	4,801	10,366	53.7	5,665	4,890	10,555	-7.8
20	1,849	1,653	3,502	52.8	1,883	1,683	3,566	5.1
21	1,950	1,758	3,708	52.6	1,986	1,790	3,776	9.7
22	2,021	1,844	3,865	52.3	2,058	1,877	3,935	13.5
23	2,099	1,931	4,030	52.1	2,137	1,966	4,103	18.8
24	2,113	1,948	4,060	52.0	2,152	1,982	4,134	23.1
(20-24)	10,031	9,134	19,165	52.3	10,216	9,298	19,514	14.0
25-29	10,493	9,809	20,301	51.7	10,684	9,987	20,671	28.5
30-34	9,635	9,136	18,771	51.3	9,811	9,303	19,114	45.4
35-39	8,417	8,028	16,445	51.1	8,570	8,174	16,744	52.8
40-44	6,634	6,278	12,912	51.4	6,755	6,392	13,147	25.4
45-49	5,439	5,085	10,524	51.7	5,538	5,178	10,716	1.3
50-54	5,104	4,703	9,807	52.0	5,197	4,789	9,986	2.7
55-59	5,162	4,711	9,873	52.3	5,256	4,797	10,053	16.0
60-64	4,707	4,365	9,073	51.9	4,793	4,445	9,238	27.5
65-69	3,843	3,431	7,274	52.8	3,913	3,494	7,407	37.6
70 AND OVER	5,981	4,899	10,881	55.0	6,091	4,988	11,079	69.8
TOTAL ^{1/}	81,012	74,379	155,391	52.1	82,489	75,735	158,224	23.7
PERCENT CHANGE FROM PRIOR YEAR	0.3	1.3	0.8	-	-	-	-	-

^{1/} TOTALS MAY NOT ADD DUE TO ROUNDING.

NET REVENUES TO THE HIGHWAY TRUST FUND

(EXCLUDING MASS TRANSIT ACCOUNT)

FIGURE 6



NOTE: TRANSITION QUARTER HAS BEEN EXCLUDED.

FEDERAL HIGHWAY TRUST FUND

FISCAL YEARS 1957 - 1984¹

(THOUSANDS OF DOLLARS)

TABLE SS84-7
OCTOBER 1985

STATE	PAYMENTS INTO THE FUND 2/		APPORTIONMENTS FROM THE FUND 3/		RATIO - APPORTIONMENTS/PAYMENTS	
	FISCAL YEAR 1984	CUMULATED SINCE 7-1-56	FISCAL YEAR 1984	CUMULATED SINCE 7-1-56	FISCAL YEAR 1984	CUMULATED SINCE 7-1-56
	(1)	(2)	(3)	(4)	(5)	(6)
ALABAMA	198,223	2,621,307	215,377	3,305,466	1.09	1.26
ALASKA	30,807	224,959	154,093	2,056,724	5.00	9.14
ARIZONA	145,080	1,639,105	239,423	2,545,700	1.65	1.55
ARKANSAS	130,718	1,717,742	123,397	1,799,587	0.94	1.05
CALIFORNIA	1,053,515	14,186,057	907,428	12,552,038	0.86	0.88
COLORADO	142,059	1,846,262	193,729	2,490,203	1.36	1.35
CONNECTICUT	124,835	1,737,999	205,601	2,438,196	1.65	1.40
DELAWARE	31,751	417,194	44,990	664,194	1.42	1.59
DIST. OF COL.	16,904	317,505	72,363	1,215,729	4.28	3.83
FLORIDA	484,869	5,465,650	419,150	5,212,124	0.86	0.95
GEORGIA	325,988	3,821,922	303,584	4,189,550	0.93	1.10
HAWAII	27,116	358,596	78,242	1,191,038	2.89	3.32
IDAHO	45,176	676,047	85,722	1,202,147	1.90	1.78
ILLINOIS	441,362	6,663,470	544,268	7,435,891	1.23	1.12
INDIANA	268,615	3,973,525	255,212	3,367,838	0.95	0.85
IOWA	130,733	2,192,569	174,481	2,431,747	1.33	1.11
KANSAS	130,574	1,909,005	184,794	2,207,973	1.42	1.16
KENTUCKY	182,708	2,355,671	266,275	3,065,222	1.46	1.30
LOUISIANA	225,573	2,643,569	251,688	3,965,138	1.12	1.50
MAINE	53,913	741,757	57,253	886,525	1.06	1.20
MARYLAND	186,963	2,403,073	260,630	3,894,981	1.39	1.62
MASSACHUSETTS	215,287	3,031,222	212,556	2,951,263	0.99	0.97
MICHIGAN	326,356	5,868,860	336,428	5,184,578	1.03	0.88
MINNESOTA	197,580	2,757,732	243,881	3,579,957	1.23	1.30
MISSISSIPPI	131,218	1,706,259	152,347	1,885,999	1.16	1.11
MISSOURI	261,383	3,655,574	277,437	3,827,389	1.06	1.05
MONTANA	50,552	703,663	112,732	1,969,584	2.23	2.80
NEBRASKA	80,051	1,269,567	108,560	1,429,091	1.35	1.13
NEVADA	51,387	566,339	74,209	1,252,921	1.44	2.21
NEW HAMPSHIRE	37,482	530,786	54,532	842,767	1.45	1.59
NEW JERSEY	329,269	4,301,871	287,733	3,696,791	0.87	0.86
NEW MEXICO	81,745	1,060,998	99,490	1,709,057	1.22	1.61
NEW YORK	491,520	7,633,123	616,635	8,722,979	1.25	1.14
NORTH CAROLINA	302,196	3,887,051	253,973	3,145,787	0.84	0.81
NORTH DAKOTA	40,837	538,275	74,472	1,086,440	1.82	2.02
OHIO	462,146	6,960,047	395,514	6,386,454	0.86	0.92
OKLAHOMA	201,496	2,446,927	167,443	1,944,270	0.83	0.79
OREGON	137,355	1,838,030	147,596	2,637,756	1.07	1.44
PENNSYLVANIA	462,470	6,799,704	484,883	7,477,481	1.05	1.10
RHODE ISLAND	32,720	496,232	126,027	889,317	3.85	1.79
SOUTH CAROLINA	164,753	1,980,589	136,148	1,798,501	0.83	0.91
SOUTH DAKOTA	39,285	586,108	78,235	1,180,285	1.99	2.01
TENNESSEE	252,257	3,082,536	267,158	3,516,639	1.06	1.14
TEXAS	892,438	10,637,796	795,798	8,724,505	0.89	0.82
UTAH	72,546	905,200	141,362	1,941,389	1.95	2.14
VERMONT	23,497	331,064	50,273	859,018	2.14	2.55
VIRGINIA	265,598	3,340,366	303,750	4,634,453	1.14	1.39
WASHINGTON	192,033	2,464,637	283,481	4,162,463	1.48	1.69
WEST VIRGINIA	81,962	1,185,040	168,654	3,163,132	2.06	2.67
WISCONSIN	208,655	2,880,151	171,572	2,411,548	0.82	0.84
WYOMING	43,023	500,999	79,794	1,249,833	1.85	2.49
TOTAL	10,506,579	141,869,740	11,740,283	162,379,658	-	-
AMERICAN SAMOA	-	-	2,427	2,520	-	-
GUAM	-	-	5,875	5,968	-	-
N. MARIANAS	-	-	2,377	2,385	-	-
PUERTO RICO	-	-	63,278	528,135	-	-
VIRGIN ISLANDS	-	-	5,968	6,070	-	-
GRAND TOTAL	10,506,579	141,869,740	11,820,208	162,924,736	1.13	1.15

1/ INCLUDES FISCAL YEAR 1985 INTERSTATE CONSTRUCTION AND INTERSTATE 4R FUNDS APPORTIONED DURING FISCAL YEAR 1984. DOES NOT INCLUDE FISCAL YEAR 1985 INTERSTATE CONSTRUCTION FUNDS APPORTIONED ON MARCH 13, 1985.

2/ TOTAL FEDERAL HIGHWAY TRUST FUND RECEIPTS ARE REPORTED BY THE U.S. DEPARTMENT OF THE TREASURY. PAYMENTS INTO THE HIGHWAY TRUST FUND ATTRIBUTABLE TO HIGHWAY USERS IN EACH STATE ARE ESTIMATED BY THE FEDERAL HIGHWAY ADMINISTRATION. INCLUDES REVENUES FROM HIGHWAY-USER TAXES ONLY. EXCLUDES INTEREST.

3/ INCLUDES ALL FUNDS APPORTIONED OR ALLOCATED FROM THE HIGHWAY TRUST FUND EXCEPT FOR THE FOLLOWING PROGRAMS: BRIDGES OVER FEDERAL DAMS, INDIAN RESERVATION ROADS, HIGHWAY SAFETY INFORMATION, AND RURAL TRANSPORTATION ASSISTANCE. THESE PROGRAMS ARE EITHER ADMINISTERED BY OTHER FEDERAL AGENCIES OR ARE TREATED AS ADMINISTRATIVE FUNDS AND CANNOT BE EASILY ATTRIBUTED TO INDIVIDUAL STATES. OBLIGATIONS ARE USED TO REPRESENT ALLOCATIONS FOR THE FOLLOWING PROGRAMS: FEDERAL LANDS, EMERGENCY RELIEF, RURAL HIGHWAY PUBLIC TRANSPORTATION DEMONSTRATION, PARKWAYS AND PARK HIGHWAYS, RAILROAD-HIGHWAY CROSSINGS DEMONSTRATION, RAILROAD-HIGHWAY DEMONSTRATION, DISCRETIONARY ALCOHOL PROGRAM AND THE WOODROW WILSON BRIDGE.

APPORTIONMENT OF FEDERAL-AID HIGHWAY INTERSTATE FUNDS ¹

FOR FISCAL YEAR 1987

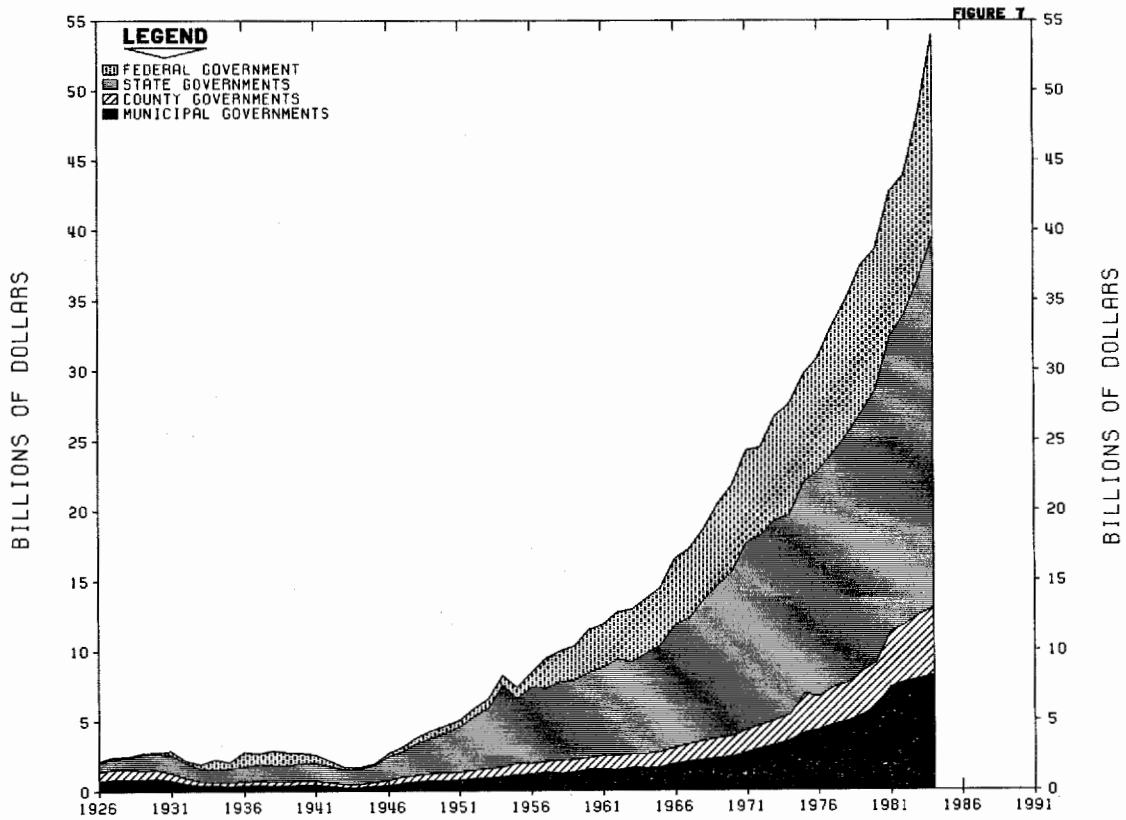
(THOUSANDS OF DOLLARS)

TABLE SS84-8-PART 2
OCTOBER 1985

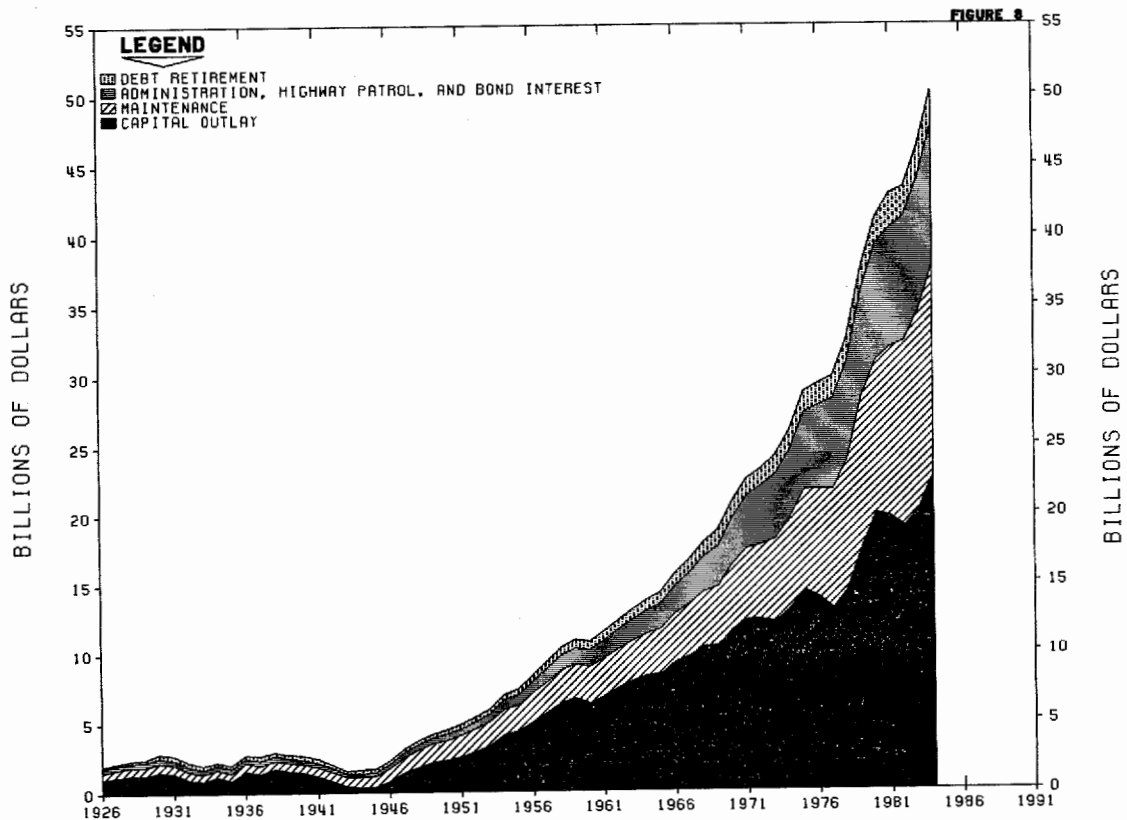
STATE	INTERSTATE	INTERSTATE RESURFACING 2/	TOTAL	STATE
ALABAMA	94,151	54,787	148,938	ALABAMA
ALASKA	18,201	26,475	44,676	ALASKA
ARIZONA	60,072	64,818	124,890	ARIZONA
ARKANSAS	18,201	33,189	51,390	ARKANSAS
CALIFORNIA	328,248	299,505	627,753	CALIFORNIA
COLORADO	62,768	62,252	125,020	COLORADO
CONNECTICUT	79,574	39,314	118,888	CONNECTICUT
DELAWARE	18,201	15,515	33,716	DELAWARE
DIST. OF COL.	21,433	15,515	36,948	DIST. OF COL.
FLORIDA	285,815	110,379	396,194	FLORIDA
GEORGIA	109,394	107,473	216,867	GEORGIA
HAWAII	90,990	15,515	106,505	HAWAII
IDAHO	29,487	29,008	58,495	IDAHO
ILLINOIS	18,201	111,265	129,466	ILLINOIS
INDIANA	18,201	70,382	88,583	INDIANA
IOWA	18,201	42,687	60,888	IOWA
KANSAS	18,201	45,421	63,622	KANSAS
KENTUCKY	82,902	58,075	140,977	KENTUCKY
LOUISIANA	192,995	54,908	247,903	LOUISIANA
MAINE	18,201	15,515	33,716	MAINE
MARYLAND	90,923	46,831	137,754	MARYLAND
MASSACHUSETTS	145,237	38,138	183,375	MASSACHUSETTS
MICHIGAN	75,680	98,383	174,063	MICHIGAN
MINNESOTA	94,917	57,724	152,641	MINNESOTA
MISSISSIPPI	18,201	39,729	57,930	MISSISSIPPI
MISSOURI	18,201	86,522	104,723	MISSOURI
MONTANA	18,201	49,310	67,511	MONTANA
NEBRASKA	18,201	27,246	45,447	NEBRASKA
NEVADA	18,201	27,386	45,587	NEVADA
NEW HAMPSHIRE	18,201	15,515	33,716	NEW HAMPSHIRE
NEW JERSEY	131,026	36,383	167,409	NEW JERSEY
NEW MEXICO	18,201	52,142	70,343	NEW MEXICO
NEW YORK	323,123	107,515	430,638	NEW YORK
NORTH CAROLINA	51,985	54,342	106,327	NORTH CAROLINA
NORTH DAKOTA	18,201	25,754	43,955	NORTH DAKOTA
OHIO	30,552	134,611	165,163	OHIO
OKLAHOMA	18,737	45,477	64,214	OKLAHOMA
OREGON	26,824	47,512	74,336	OREGON
PENNSYLVANIA	174,391	83,687	258,078	PENNSYLVANIA
RHODE ISLAND	18,201	15,515	33,716	RHODE ISLAND
SOUTH CAROLINA	46,859	47,226	94,085	SOUTH CAROLINA
SOUTH DAKOTA	18,201	31,913	50,114	SOUTH DAKOTA
TENNESSEE	18,201	77,875	96,076	TENNESSEE
TEXAS	187,870	248,509	436,379	TEXAS
UTAH	68,192	46,948	115,140	UTAH
VERMONT	18,201	15,839	34,040	VERMONT
VIRGINIA	154,156	82,792	236,948	VIRGINIA
WASHINGTON	163,275	68,745	232,020	WASHINGTON
WEST VIRGINIA	18,201	23,307	41,508	WEST VIRGINIA
WISCONSIN	18,201	41,240	59,441	WISCONSIN
WYOMING	18,201	41,280	59,481	WYOMING
U.S. TOTAL 2/	3,640,200	3,087,393	6,727,593	U.S. TOTAL 2/
AMERICAN SAMOA	-	-	-	AMERICAN SAMOA
GUAM	-	-	-	GUAM
N. MARIANAS	-	-	-	N. MARIANAS
PUERTO RICO	-	15,515	15,515	PUERTO RICO
VIRGIN ISLANDS	-	-	-	VIRGIN ISLANDS
GRAND TOTAL 2/	3,640,200	3,102,908	6,743,108	GRAND TOTAL 2/

1/ APPORTIONED OCTOBER 1, 1985.
2/ MAY NOT ADD DUE TO ROUNDING.

TOTAL RECEIPTS FOR HIGHWAYS, BY GOVERNMENTAL UNITS
1926 - 1984



TOTAL DISBURSEMENTS FOR HIGHWAYS, BY FUNCTION
1926 - 1984



TOTAL RECEIPTS AND DISBURSEMENTS FOR HIGHWAYS, ALL UNITS OF GOVERNMENT

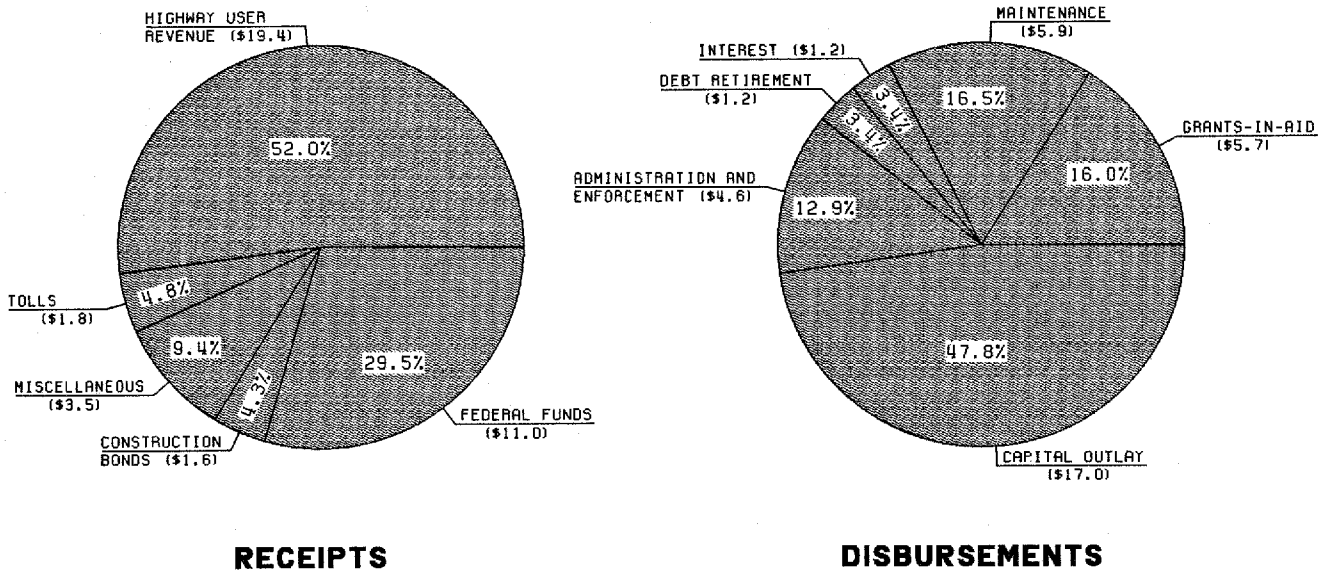
TABLE SS84-9 (HF-10)
OCTOBER 1985

ITEM	1983					1984 ^{1/}					PERCENT CHANGE 1984 — 1983
	FEDERAL GOVERNMENT	STATE AGENCIES AND D.C.	COUNTIES AND TOWNSHIPS	MUNICIPALITIES	TOTAL	FEDERAL GOVERNMENT	STATE AGENCIES AND D.C.	COUNTIES AND TOWNSHIPS	MUNICIPALITIES	TOTAL	
RECEIPTS BY COLLECTING AGENCIES											
IMPOSTS ON HIGHWAY USERS	8,502	18,833	223	395	27,943	11,354	21,251	251	413	33,279	19.1
INCOME FROM NON-USER SOURCES	2,013	2,775	3,274	5,748	13,810	1,887	2,322	3,403	5,864	13,478	-2.4
INVESTMENT INCOME & OTHER RECEIPTS	1,169	1,238	584	762	3,753	1,251	1,215	604	789	3,859	2.8
BOND ISSUE PROCEEDS (PAR VALUE) ^{2/}	-	1,072	475	1,020	2,567	-	1,715	499	1,090	3,304	28.7
TOTAL RECEIPTS	11,684	23,918	4,556	7,915	48,073	14,502	26,503	4,759	8,156	53,920	12.2
DISBURSEMENTS BY EXPENDING AGENCIES											
CAPITAL OUTLAY	468	14,772	1,987	2,967	20,194	520	16,392	2,130	3,086	22,728	12.5
MAINTENANCE & TRAFFIC SERVICES	133	5,563	4,553	3,991	14,240	141	5,885	4,780	4,231	15,037	5.6
ADMINISTRATION & RESEARCH	269	1,902	582	594	3,347	304	2,072	625	635	3,637	8.7
HIGHWAY LAW ENFORCEMENT & SAFETY	-	2,311	341	1,657	4,309	-	2,527	392	1,706	4,625	7.3
INTEREST ON DEBT	-	1,177	192	503	1,872	-	893	212	952	1,657	-11.5
DEBT RETIREMENT (PAR VALUE) ^{2/}	-	1,191	303	678	2,172	-	1,507	340	685	2,532	16.6
TOTAL DISBURSEMENTS	870	26,916	7,958	10,390	46,134	965	29,876	8,479	10,896	50,216	8.8

^{1/} LOCAL GOVERNMENT DATA ARE PRELIMINARY.
^{2/} EXCLUDES REFUNDING BONDS AND SHORT-TERM OBLIGATIONS. PREMIUMS AND DISCOUNTS ON SALE ARE INCLUDED WITH "INVESTMENT INCOME AND OTHER RECEIPTS"; REDEMPTION PREMIUMS AND DISCOUNTS ARE INCLUDED WITH "INTEREST ON DEBT."

FIGURE 9

STATE RECEIPTS AND DISBURSEMENTS FOR HIGHWAYS 1984 (IN BILLIONS OF DOLLARS)



SOURCE: TABLE SF-21

HIGHWAY PRICE TRENDS AND CONSUMER PRICE INDEX

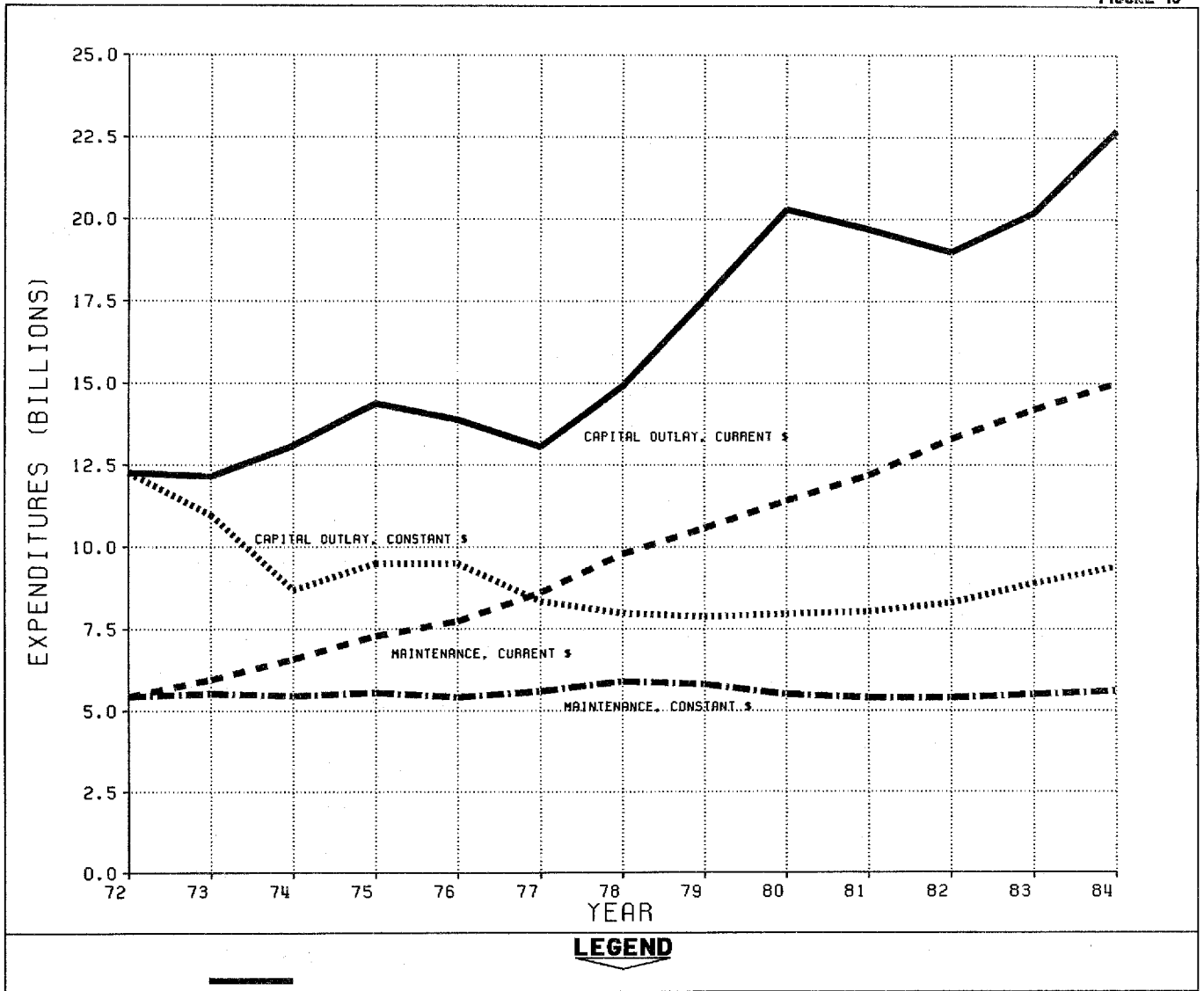
(1977 = 100)

TABLE SS84-10
OCTOBER 1985

ITEM	1975	1976	1977	1978	1979	1980	1981	1982	1983	1984
FEDERAL-AID HIGHWAY CONSTRUCTION	96.7	93.4	100.0	119.4	142.6	163.0	156.7	146.8	146.5	155.0
HIGHWAY MAINTENANCE & OPERATION	85.2	92.7	100.0	107.8	118.2	134.6	146.3	160.0	166.3	173.9
CONSUMER PRICE INDEX	88.8	93.9	100.0	107.6	119.7	135.9	151.3	159.3	166.0	171.4

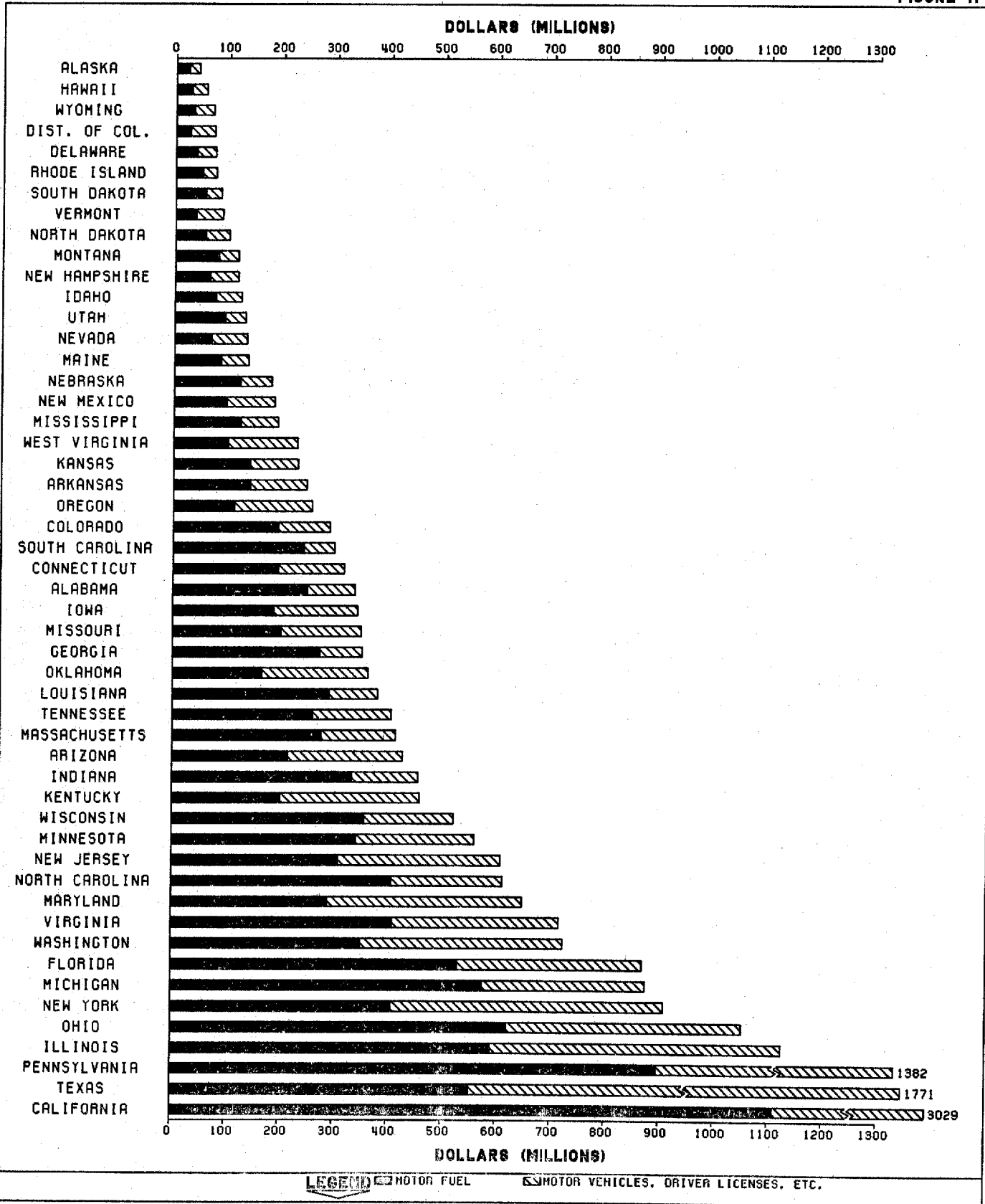
HIGHWAY EXPENDITURES BY ALL UNITS OF GOVERNMENT

FIGURE 10



TOTAL STATE HIGHWAY USER REVENUE (EXCLUDING FEDERAL AID) 1984

FIGURE 11



DISPOSITION OF RECEIPTS FROM STATE IMPOSTS ON HIGHWAY USERS - 1984¹

COMPILED FROM REPORTS
OF STATE AUTHORITIES

(THOUSANDS OF DOLLARS)

TABLE SS84-11 (OF)
OCTOBER 1985

STATE	TO STATES		TO COUNTIES 2/		TO MUNICIPALITIES		FOR OTHER THAN HIGHWAY PURPOSES 3/	TOTAL	
	AMOUNT	PERCENT CHANGE 1984 1983	AMOUNT	PERCENT CHANGE 1984 1983	AMOUNT	PERCENT CHANGE 1984 1983		AMOUNT	PERCENT CHANGE 1984 1983
ALABAMA	178,279	32.4	122,860	-14.6	20,429	17.1	-	321,388	8.6
ALASKA	38,886	6.1	-	0	-	0	-	38,886	6.1
ARIZONA	183,608	44.9	67,100	43.4	155,051	72.5	6,501	412,260	56.5
ARKANSAS	165,132	18.2	42,495	20.8	32,885	23.2	2,691	243,203	20.5
CALIFORNIA	1,168,833	16.8	279,249	-1.9	308,786	8.1	1,015,535	2,772,403	13.9
COLORADO	158,822	16.5	61,808	19.4	38,425	29.0	8,438	264,494	19.2
CONNECTICUT	214,507	26.4	7,964	12.3	20,172	5.4	53,045	295,688	8.2
DELAWARE	54,215	-10.9	-	0	2,000	0	14,177	70,391	12.0
DIST. OF COL.	-	0	-	0	53,936	60.5	14,802	68,738	12.4
FLORIDA	573,327	37.7	136,592	-41.8	54,429	0.8	22,217	786,565	9.5
GEORGIA	283,918	33.8	35,369	-55.5	4,661	-53.6	-	323,949	7.4
HAWAII	34,739	-5.4	21,982	22.7	-	0	-	56,722	3.8
IDAHO	74,971	27.8	32,828	-16.1	11,540	-9.9	754	120,094	8.5
ILLINOIS	648,048	61.6	242,173	17.7	139,618	25.9	1,732	1,031,571	43.7
INDIANA	238,633	6.5	114,549	9.3	73,103	0.7	-	426,285	6.2
IOWA	154,525	-1.9	109,599	-3.1	55,304	0.9	1,476	320,905	-1.7
KANSAS	149,240	13.6	35,271	22.4	24,722	17.3	-	209,233	14.9
KENTUCKY	353,362	6.8	60,549	15.0	18,544	-2.5	-	432,454	7.4
LOUISIANA	305,606	35.6	50,331	15.6	2,647	-6.6	-	358,584	31.9
MAINE	110,036	25.3	11,115	-5.3	6,320	-21.2	-	127,472	21.9
MARYLAND	293,410	13.9	120,536	8.4	71,591	36.2	141,629	627,165	16.5
MASSACHUSETTS	269,192	-1.3	12,010	-40.1	58,390	183.2	50,629	390,221	10.8
MICHIGAN	351,423	5.7	227,989	24.2	197,902	107.7	32,075	809,390	19.8
MINNESOTA	327,642	17.4	158,500	14.9	47,969	15.6	-	534,111	16.5
MISSISSIPPI	115,354	-0.5	52,762	2.4	9,260	30.2	-	177,375	1.6
MISSOURI	261,971	8.7	23,135	14.4	32,951	9.7	-	318,056	9.3
MONTANA	83,836	101.2	19,402	-35.6	9,384	-44.8	-	112,622	24.0
NEBRASKA	96,160	7.1	35,083	6.4	34,442	11.1	1,000	166,684	7.7
NEVADA	82,881	3.5	5,940	-77.6	8,304	-36.5	25,482	122,607	2.5
NEW HAMPSHIRE	103,936	24.0	791	-76.3	3,056	-42.0	411	108,193	17.0
NEW JERSEY 4/	324,074	18.1	9,740	112.4	7,996	-	236,110	577,921	4.4
NEW MEXICO	158,817	12.0	10,226	6.0	2,515	5.9	-	171,558	11.5
NEW YORK	514,425	5.4	145,681	-0.7	137,581	1.1	-	797,687	3.5
NORTH CAROLINA	531,299	8.9	-	0	45,443	5.0	3,566	580,307	9.2
NORTH DAKOTA	45,384	28.8	36,443	34.1	14,397	15.0	-	96,224	28.4
OHIO	549,790	14.4	316,594	10.1	132,988	2.4	2,354	1,001,725	9.9
OKLAHOMA	209,001	2.1	93,398	17.8	15,339	10.3	23,727	341,465	10.8
OREGON	126,768	-4.9	54,946	50.3	42,591	93.7	-	224,306	16.9
PENNSYLVANIA	1,162,973	14.3	114,074	11.1	64,835	12.2	-	1,341,881	13.9
RHODE ISLAND	58,275	13.4	90	0	300	0	6,776	65,442	2.9
SOUTH CAROLINA	259,300	5.7	20,724	14.9	-	0	1,038	281,063	6.3
SOUTH DAKOTA	61,325	7.6	16,287	3.8	3,306	-23.9	237	81,155	5.0
TENNESSEE	173,817	-19.0	167,884	65.2	35,832	-11.0	4,828	382,361	5.5
TEXAS	995,170	7.7	74,710	3.5	34	161.5	607,298	1,677,212	18.7
UTAH	88,408	22.0	17,164	-11.9	14,610	1.1	50	120,232	13.0
VERMONT	55,639	27.2	17,896	0.7	8,850	-4.6	60	82,444	13.9
VIRGINIA	548,823	6.2	8,838	-11.4	79,129	11.7	35,056	671,845	6.6
WASHINGTON	330,108	9.9	101,309	19.2	45,250	42.1	196,067	672,735	12.6
WEST VIRGINIA	218,693	4.2	-	0	-	0	-	218,693	4.2
WISCONSIN	276,301	11.0	80,462	-4.6	83,335	5.5	50,434	490,533	9.6
WYOMING	49,216	1.6	9,258	-4.7	3,471	-3.7	-	61,945	0.3
TOTAL	13,809,098	14.4	3,383,706	4.2	2,233,443	20.6	2,560,195	21,986,443	13.5

1/ COLUMNS MAY NOT ADD DUE TO ROUNDING. EXCLUDES AMOUNTS USED FOR COLLECTION COSTS.
 2/ SOME STATES INCLUDE TOWNSHIPS.
 3/ INCLUDES ALLOCATIONS FOR MASS TRANSPORTATION PROGRAMS.
 4/ DISPOSITION OF STATE HIGHWAY-USER REVENUE TO MUNICIPALITIES WAS ZERO IN 1983. THEREFORE, ANY PERCENTAGE CHANGE FROM 1983 TO 1984 WOULD NOT BE MEANINGFUL.

STATE HIGHWAY CAPITAL OUTLAY AND MAINTENANCE - 1984¹

CLASSIFIED BY FUNCTIONAL SYSTEMS

(THOUSANDS OF DOLLARS)

TABLE SS84-12 (SF-12)
OCTOBER 1985

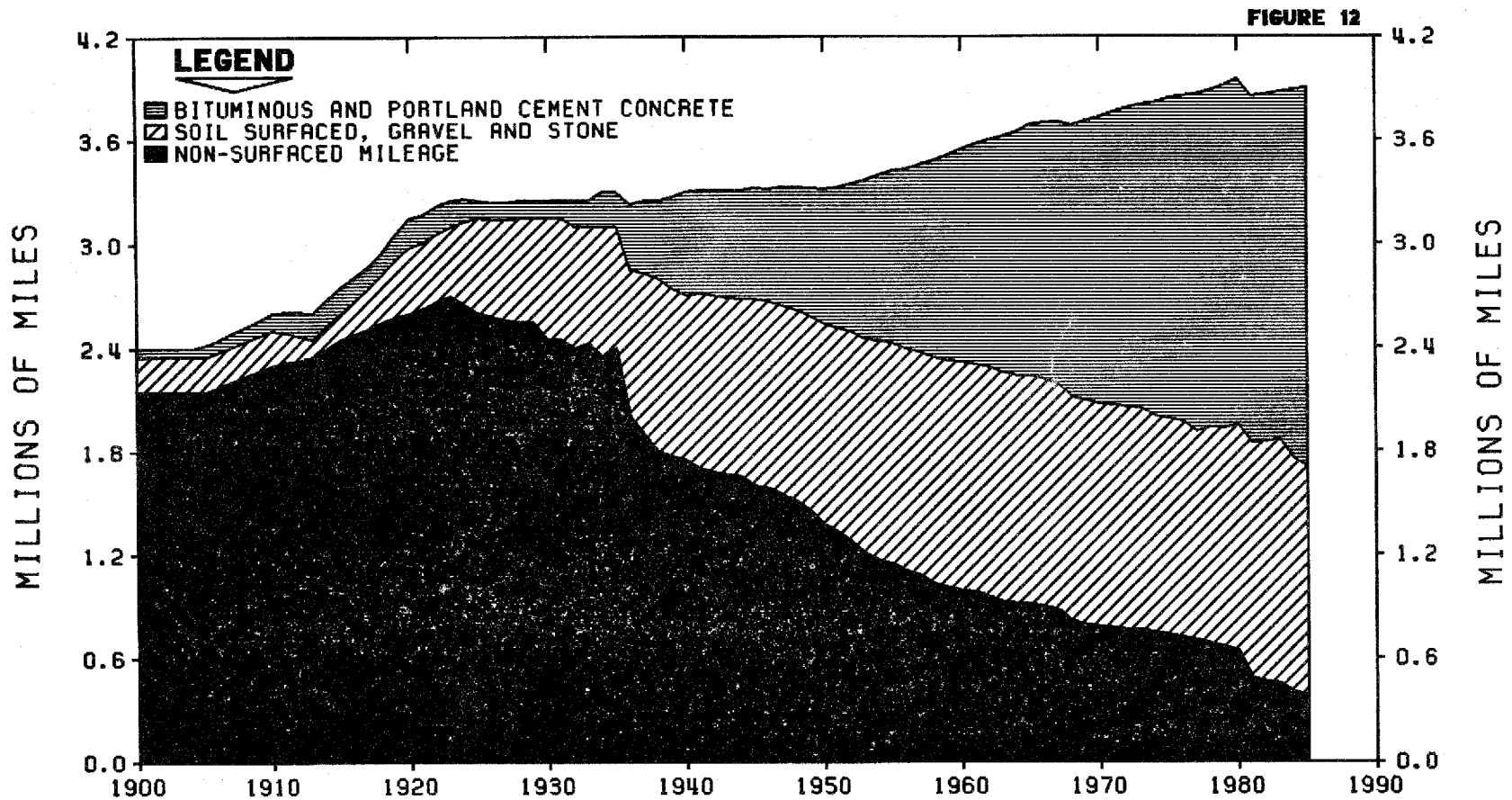
STATE	CAPITAL OUTLAY				MAINTENANCE				GRAND TOTAL	STATE
	ARTERIALS		COLLECTORS	TOTAL	ARTERIALS		COLLECTORS	TOTAL		
	INTERSTATE	OTHER			INTERSTATE	OTHER				
ALABAMA	157,383	159,209	47,658	364,250	7,342	53,711	11,568	72,620	436,870	ALABAMA
ALASKA	-	-	-	-	-	-	-	-	-	ALASKA
ARIZONA	143,133	87,932	13,190	244,255	12,592	21,246	4,773	38,611	282,866	ARIZONA
ARKANSAS	39,989	80,001	29,945	149,935	5,924	26,559	19,581	52,064	201,999	ARKANSAS
CALIFORNIA	-	-	-	-	-	-	-	-	-	CALIFORNIA
COLORADO	95,299	114,828	24,107	234,234	28,531	42,739	29,191	100,460	334,694	COLORADO
CONNECTICUT	115,050	71,424	27,127	213,601	14,094	22,686	12,713	49,492	263,093	CONNECTICUT
DELAWARE	13,841	58,199	4,681	76,720	8,280	4,455	2,790	15,927	92,247	DELAWARE
DIST. OF COL.	9,409	18,082	6,605	34,097	-	-	-	-	34,097	DIST. OF COL.
FLORIDA	309,707	334,677	-	644,384	14,142	113,701	458	128,302	772,686	FLORIDA
GEORGIA	231,933	204,616	66,707	503,257	9,763	49,657	61,509	120,929	624,186	GEORGIA
HAWAII	45,937	22,639	1,181	69,757	2,964	9,248	1,746	13,957	83,714	HAWAII
IDAHO	30,333	44,882	15,828	91,044	5,167	24,029	12,305	41,502	132,546	IDAHO
ILLINOIS	253,647	721,466	71,295	1,046,408	70,329	147,557	12,655	230,541	1,276,949	ILLINOIS
INDIANA	100,042	142,538	67,676	310,255	25,928	75,553	51,145	152,626	462,881	INDIANA
IOWA	85,824	200,358	-	286,182	8,964	61,285	-	70,250	356,432	IOWA
KANSAS	82,479	113,934	9,916	206,329	24,722	40,701	1,816	67,239	273,568	KANSAS
KENTUCKY	151,745	178,925	82,423	413,093	10,374	38,102	64,559	113,035	526,128	KENTUCKY
LOUISIANA	-	-	-	-	-	-	-	-	-	LOUISIANA
MAINE	26,934	37,998	17,283	82,216	10,536	17,968	39,722	68,227	150,443	MAINE
MARYLAND	-	-	-	-	-	-	-	-	-	MARYLAND
MASSACHUSETTS	75,197	50,770	18,963	144,930	24,775	11,902	354	37,032	181,962	MASSACHUSETTS
MICHIGAN	155,349	204,024	5,222	364,596	53,773	78,031	1,977	133,781	498,377	MICHIGAN
MINNESOTA	169,984	144,007	72,778	386,769	14,641	77,647	9,094	101,382	488,151	MINNESOTA
MISSISSIPPI	40,281	139,068	45,546	224,895	6,315	29,152	19,217	54,683	279,578	MISSISSIPPI
MISSOURI	121,334	165,870	27,711	314,916	16,873	44,683	98,032	159,587	474,503	MISSOURI
MONTANA	94,738	66,142	17,815	178,695	5,596	27,645	1,470	34,711	213,406	MONTANA
NEBRASKA	16,115	127,604	11,918	155,637	4,067	37,056	2,913	44,036	199,673	NEBRASKA
NEVADA	48,334	55,575	13,642	117,552	3,768	8,483	10,864	23,114	140,666	NEVADA
NEW HAMPSHIRE	20,585	38,579	5,015	64,179	10,120	19,903	38,439	68,463	132,642	NEW HAMPSHIRE
NEW JERSEY	170,836	199,681	399	370,915	68,357	99,451	799	168,608	539,523	NEW JERSEY
NEW MEXICO	92,629	95,073	22,425	210,128	10,973	20,933	26,671	58,577	268,705	NEW MEXICO
NEW YORK	157,821	546,043	84,909	788,773	82,986	95,553	23,740	202,278	991,051	NEW YORK
NORTH CAROLINA	90,431	151,403	90,586	332,420	9,402	35,084	51,295	95,781	428,201	NORTH CAROLINA
NORTH DAKOTA	20,247	65,217	33,762	119,227	3,397	19,740	3,467	26,605	145,832	NORTH DAKOTA
OHIO	228,591	230,805	134,957	594,352	53,746	26,727	98,132	178,605	772,957	OHIO
OKLAHOMA	56,308	123,038	44,847	224,193	15,693	34,123	15,038	64,854	289,047	OKLAHOMA
OREGON	81,345	96,258	17,314	194,918	9,390	44,470	11,148	65,008	259,926	OREGON
PENNSYLVANIA	339,304	388,770	50,830	778,904	72,762	381,097	82,534	536,393	1,315,297	PENNSYLVANIA
RHODE ISLAND	-	-	-	-	-	-	-	-	-	RHODE ISLAND
SOUTH CAROLINA	83,903	66,172	22,823	172,897	1,219	10,040	20,965	32,224	205,121	SOUTH CAROLINA
SOUTH DAKOTA	13,341	84,231	27,440	125,011	4,676	22,443	5,160	32,280	157,291	SOUTH DAKOTA
TENNESSEE	143,281	129,016	77,060	349,357	27,628	82,884	-	110,511	459,868	TENNESSEE
TEXAS	359,859	468,950	186,594	1,015,403	27,562	153,070	135,409	316,141	1,331,544	TEXAS
UTAH	127,000	65,200	16,900	209,100	17,522	18,260	5,660	41,452	250,552	UTAH
VERMONT	7,625	30,464	8,330	46,420	5,699	10,736	11,546	27,980	74,400	VERMONT
VIRGINIA	135,008	191,020	47,226	373,253	46,514	103,754	58,594	218,851	592,114	VIRGINIA
WASHINGTON	224,518	158,500	35,305	418,322	20,315	33,845	79,763	133,923	552,245	WASHINGTON
WEST VIRGINIA	131,281	81,584	41,382	254,247	13,868	23,364	27,401	64,633	318,880	WEST VIRGINIA
WISCONSIN	88,771	181,500	25,689	295,961	6,716	71,535	17,534	95,884	391,843	WISCONSIN
WYOMING	51,026	93,900	48,067	192,993	10,659	21,331	16,373	48,363	241,356	WYOMING
TOTAL 2/	5,237,727	7,030,172	1,721,077	13,988,980	908,774	2,392,139	1,210,220	4,511,132	18,500,112	TOTAL 2/
PERCENT 2/	37.44	50.26	12.30	100.00	20.15	53.03	26.83	100.00	-	PERCENT 2/

1/ THIS TABLE SHOWS CAPITAL OUTLAY AND MAINTENANCE EXPENDITURES BY FUNCTIONAL SYSTEMS. THE DATA ARE NOT COMPLETE FOR ALL STATES, AND ENTRIES FOR

SOME STATES MAY INCLUDE ESTIMATES.

2/ THE TOTALS AND PERCENTAGES SHOWN APPLY TO THE 46 REPORTING STATES.

TOTAL ROAD AND STREET MILEAGE IN THE UNITED STATES BY SURFACE TYPE 1900 - 1985



NOTE: BEGINNING WITH 1981 DATA, ONLY PUBLIC ROAD MILEAGE, AS DEFINED BY 23 U.S.C. 402, WAS REPORTED TO FHWA BY THE STATES. PRIMITIVE ROADS AND OTHERS NOT OPEN TO PUBLIC TRAVEL OR MAINTAINED BY PUBLIC AUTHORITY, WHILE INCLUDED IN MILEAGE TOTALS PRIOR TO 1981, ARE NOT REFLECTED IN THE DATA, THEREAFTER. 1985 DATA ARE ESTIMATED.

ANNUAL VEHICLE MILES OF TRAVEL AND RELATED DATA - 1984¹

BY HIGHWAY CATEGORY AND VEHICLE TYPE

OFFICE OF HIGHWAY
INFORMATION MANAGEMENT

TABLE SS84-15(VM-1)
OCTOBER 1985

YEAR	ITEM	PASSENGER VEHICLES					TRUCKS					ALL MOTOR VEHICLES
		PERSONAL PASSENGER VEHICLES			BUSES	ALL PASSENGER VEHICLES	SINGLE-UNIT			COMBI-NATION	ALL TRUCKS	
		PASSENGER CARS 2/	MOTOR-CYCLES 2/	ALL PERSONAL PASSENGER VEHICLES			2-AXLE 4-TIRE	OTHER	ALL SINGLE-UNIT			
1984	MOTOR-VEHICLE TRAVEL: (MILLIONS OF VEHICLE-MILES)											
1984	INTERSTATE RURAL	-	-	102,908	500	103,408	19,392	5,191	24,583	20,551	45,134	148,542
1983		-	-	101,018	506	101,524	18,403	4,995	23,398	19,576	42,974	144,498
1984	OTHER ARTERIAL RURAL	-	-	196,662	1,067	197,729	53,446	12,010	65,456	17,486	82,942	280,671
1983		-	-	192,220	1,055	193,275	51,367	11,684	63,051	17,050	80,101	273,376
1984	OTHER RURAL	-	-	193,096	1,868	194,964	70,538	15,142	85,680	8,992	94,672	289,636
1983		-	-	191,023	1,866	192,889	69,302	14,848	84,150	8,715	92,865	285,754
1984	ALL RURAL	-	-	492,666	3,435	496,101	143,376	32,343	175,719	47,029	222,748	718,849
1983		-	-	484,261	3,427	487,688	139,072	31,527	170,599	45,341	215,940	703,628
1984	INTERSTATE URBAN	-	-	157,825	631	158,456	27,166	6,217	33,383	11,733	45,116	203,572
1983		-	-	150,506	629	151,135	24,552	5,858	30,410	10,975	41,385	192,520
1984	OTHER URBAN	-	-	615,774	2,663	618,437	133,195	24,608	157,803	18,107	175,910	794,347
1983		-	-	594,930	2,668	597,598	122,811	23,744	146,555	17,246	163,801	761,399
1984	ALL URBAN 3/	-	-	773,599	3,294	776,893	160,361	30,825	191,186	29,840	221,026	997,919
1983		-	-	745,436	3,297	748,733	147,363	29,602	176,965	28,221	205,186	953,919
1984	TOTAL RURAL AND URBAN	1,254,265	12,000	1,266,265	6,729	11,272,994	303,737	63,168	366,905	76,869	443,774	1,716,768
1983		1,217,697	12,000	1,229,697	6,724	11,236,421	286,435	61,129	347,564	73,562	421,126	1,657,547
1984	NUMBER OF MOTOR VEHICLES REGISTERED 4/	127,866,900	5,479,822	133,346,722	583,671	133,930,393	28,997,973	7,789,626	36,787,599	1,259,500	38,047,099	171,977,492
1983		126,138,236	5,585,112	131,723,348	582,884	132,306,232	28,173,203	7,641,915	35,815,118	1,273,430	37,088,548	169,394,780
1984	AVERAGE MILES TRAVEL PER VEHICLE	9,809	2,190	9,496	11,529	9,505	10,474	8,109	9,974	61,031	11,664	9,969
1983		9,654	2,149	9,335	11,536	9,345	10,167	7,999	9,704	57,767	11,355	9,785
1984	FUEL CONSUMED (THOUSAND GALLONS)	74,041,600	240,000	74,281,600	1,140,500	75,422,100	21,240,350	7,347,447	28,587,797	14,725,900	43,313,697	118,735,797
1983		72,915,990	240,000	73,155,990	1,135,800	74,291,790	20,474,270	7,176,050	27,650,320	14,011,800	41,662,120	115,953,910
1984	AVERAGE FUEL CONSUMPTION PER VEHICLE (GALLONS)	579	44	557	1,954	563	732	943	777	11,692	1,138	689
1983		578	43	555	1,949	562	727	939	772	11,003	1,123	685
1984	AVERAGE MILES TRAVELED PER GALLON OF FUEL CONSUMED	16.94	50.00	17.05	5.90	16.88	14.30	8.60	12.83	5.22	10.25	14.46
1983		16.70	50.00	16.81	5.92	16.64	13.98	8.52	12.57	5.25	10.11	14.29

1/ THE 50 STATES AND THE DISTRICT OF COLUMBIA REPORT TRAVEL BY HIGHWAY CATEGORY, NUMBER OF MOTOR VEHICLES REGISTERED, AND TOTAL FUEL CONSUMED. THE TRAVEL AND FUEL DATA BY VEHICLE TYPE, AND STRATIFICATION OF TRUCKS, AS WELL AS RELATED DATA ARE CALCULATED BY THE FEDERAL HIGHWAY ADMINISTRATION (FHWA). ENTRIES FOR 1983 HAVE BEEN REVISED BASED ON THE AVAILABILITY OF MORE CURRENT DATA.

2/ SEPARATE ESTIMATES OF PASSENGER CAR AND MOTORCYCLE TRAVEL ARE NOT AVAILABLE BY HIGHWAY CATEGORY.

3/ URBAN CONSISTS OF TRAVEL ON ALL ROADS AND STREETS IN URBAN PLACES

OF 5,000 OR GREATER POPULATION.

4/ STRATIFICATION OF THE TRUCK FIGURES IS MADE BY FHWA BASED ON THE 1982 CENSUS OF TRANSPORTATION TRUCK INVENTORY AND USE SURVEY (TIUS). THE COMBINATIONS REPRESENT APPROXIMATELY THE NUMBER OF TRUCK-TRACTORS WITH SEMI-TRAILER(S) AND A MAJORITY OF THE HEAVY SINGLE-UNIT TRUCKS USED REGULARLY IN COMBINATION WITH FULL TRAILER(S). ALL THESE TRUCK VEHICLE FIGURES MAY BE REGARDED AS PRELIMINARY AND MAY BE REVISED PENDING FURTHER ANALYSIS OF THE 1982 TIUS DATA.

VEHICLE TRIPS, VEHICLE MILES OF TRAVEL, AND AVERAGE TRIP LENGTH BY TRIP PURPOSE - 1983

COMPILED FROM DATA COLLECTED IN THE
NATIONWIDE PERSONAL TRANSPORTATION STUDY

TABLE SS84-17
OCTOBER 1985

TRIP PURPOSE ^{1/}	VEHICLE TRIPS		VEHICLE MILES OF TRAVEL		AVERAGE TRIP LENGTH (MILES)
	ANNUAL TRIPS PER HOUSEHOLD	PERCENT OF TOTAL TRIPS	ANNUAL TRAVEL PER HOUSEHOLD	PERCENT OF TRAVEL TOTAL	
EARNING A LIVING					
HOME-TO-WORK	414	27.3	3,538	30.1	8.5
WORK RELATED	43	2.9	496	4.2	11.4
SUBTOTAL	457	30.8	4,034	34.3	8.8
FAMILY AND PERSONAL BUSINESS					
SHOPPING	297	20.4	1,568	13.4	5.3
DOCTOR/DENTIST	18	1.2	172	1.5	9.7
OTHER ^{2/}	272	18.6	1,816	15.5	6.7
SUBTOTAL	587	40.2	3,556	30.4	6.0
CIVIC, EDUCATIONAL AND RELIGIOUS	87	5.9	480	4.1	5.5
SOCIAL AND RECREATIONAL					
VISITING FRIENDS	147	9.9	1,590	13.6	10.8
PLEASURE DRIVING	6	0.4	132	1.0	22.7
VACATION	2	0.2	250	2.1	113.9
OTHER ^{3/}	181	12.0	1,562	13.3	8.7
SUBTOTAL	336	22.5	3,534	30.0	10.6
OTHER ^{4/}	19	1.3	136	1.2	7.2
ALL PURPOSES	1,486	100.0	11,739	100.0	7.8
^{1/} THE 1983 DATA ARE NOT COMPARABLE TO THE 1977 DATA DUE TO THE LARGE NUMBER OF TRIPS IN 1977 WHICH COULD NOT BE CODED TO A SPECIFIC PURPOSE, AND WERE THEREFORE INCLUDED IN "OTHER."			^{2/} INCLUDES TRIPS SUCH AS GOING TO THE BANK AND GARAGE FOR CAR REPAIR.		
			^{3/} INCLUDES TRIPS SUCH AS GOING OUT TO DINNER, MOVIES, ETC.		
			^{4/} INCLUDES TRIPS THAT CANNOT BE CLASSIFIED IN ANY OF THE OTHER CATEGORIES.		

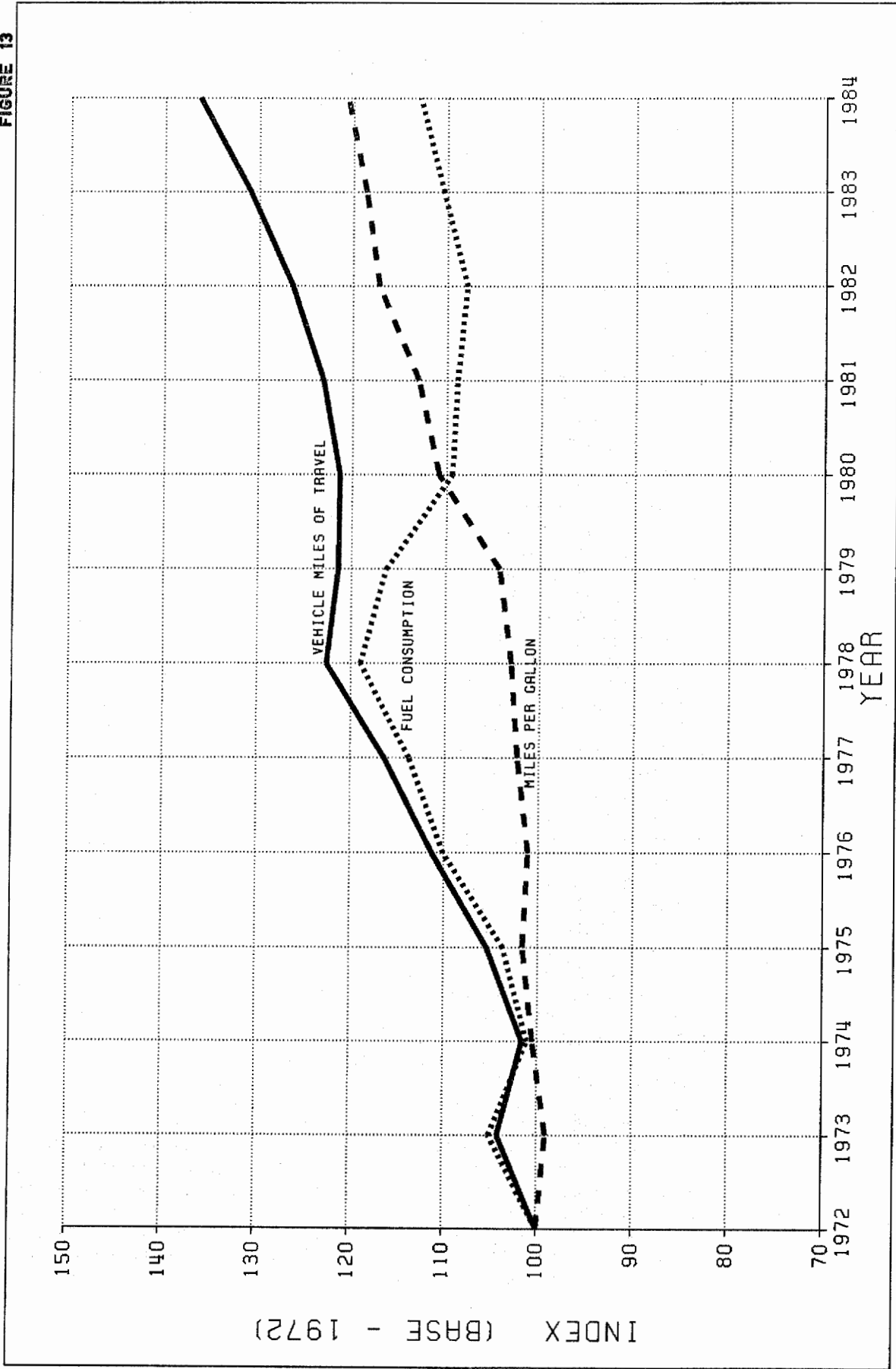
1984 RELATIONSHIPS - POPULATION, DRIVERS, VEHICLES, FUEL, AND TRAVEL

TABLE SS84-1B
OCTOBER 1985

STATE	RESIDENT POPULATION (1,000)	LICENSED DRIVERS PER 1,000 RESIDENT POPULATION	REGISTERED MOTOR VEHICLES PER 1,000 RESIDENT POPULATION	LICENSED DRIVERS PER REGISTERED MOTOR VEHICLE	PERSONS PER REGISTERED MOTOR VEHICLE	GALLONS OF FUEL PER VEHICLE	MILES PER GALLON	ANNUAL MILES PER VEHICLE	VEHICLE MILES PER CAPITA	VEHICLE MILES PER LICENSED DRIVER	STATE
ALABAMA	3,990	620	803	0.77	1.25	684	15.05	10,293	8,261	13,329	ALABAMA
ALASKA	500	610	735	0.83	1.36	752	12.99	9,763	7,178	9,322	ALASKA
ARIZONA	3,053	739	691	1.07	1.45	798	12.24	9,765	6,752	9,133	ARIZONA
ARKANSAS	2,349	713	640	1.11	1.56	933	11.85	11,058	7,076	9,926	ARKANSAS
CALIFORNIA	25,623	661	701	0.94	1.43	699	15.64	10,939	7,670	11,597	CALIFORNIA
COLORADO	3,178	714	867	0.82	1.15	581	15.36	8,927	7,737	10,835	COLORADO
CONNECTICUT	3,154	741	750	0.98	1.33	607	14.67	8,909	6,682	9,019	CONNECTICUT
DELAWARE	613	718	749	0.95	1.33	779	14.37	11,184	8,382	11,669	DELAWARE
DIST. OF COL.	623	601	371	1.61	2.69	838	16.58	13,898	5,159	8,589	DIST. OF COL.
FLORIDA	10,976	746	856	0.87	1.17	611	14.89	9,098	7,787	10,441	FLORIDA
GEORGIA	5,837	668	764	0.87	1.31	816	13.87	11,318	8,649	12,940	GEORGIA
HAWAII	1,039	562	614	0.91	1.63	525	19.42	10,195	6,261	11,149	HAWAII
IDAHO	1,001	668	939	0.71	1.06	540	15.31	8,262	7,760	11,609	IDAHO
ILLINOIS	11,511	581	660	0.87	1.51	650	14.15	9,200	6,073	10,457	ILLINOIS
INDIANA	5,498	650	719	0.90	1.39	789	13.18	10,397	7,471	11,491	INDIANA
IOWA	2,910	662	840	0.78	1.19	652	12.88	8,389	7,044	10,636	IOWA
KANSAS	2,438	694	870	0.79	1.15	671	13.15	8,821	7,677	11,064	KANSAS
KENTUCKY	3,723	604	696	0.86	1.44	783	13.78	10,791	7,508	12,427	KENTUCKY
LOUISIANA	4,462	634	663	0.95	1.51	832	12.84	10,678	7,079	11,160	LOUISIANA
MAINE	1,156	684	692	0.98	1.45	767	15.23	11,684	8,084	11,819	MAINE
MARYLAND	4,349	658	734	0.89	1.36	674	14.73	9,927	7,289	11,081	MARYLAND
MASSACHUSETTS	5,798	661	653	1.01	1.53	665	15.30	10,172	6,647	10,057	MASSACHUSETTS
MICHIGAN	9,075	704	702	1.00	1.42	666	14.96	9,566	6,994	9,929	MICHIGAN
MINNESOTA	4,162	576	713	0.80	1.40	732	14.65	10,724	7,647	13,276	MINNESOTA
MISSISSIPPI	2,598	688	556	1.23	1.80	957	13.34	12,774	7,099	10,324	MISSISSIPPI
MISSOURI	5,008	670	703	0.95	1.42	827	13.23	10,543	7,695	11,487	MISSOURI
MONTANA	824	575	831	0.69	1.20	779	13.85	10,784	8,964	15,597	MONTANA
NEBRASKA	1,606	690	783	0.88	1.28	728	13.07	9,517	7,452	10,805	NEBRASKA
NEVADA	911	748	817	0.91	1.22	748	13.16	9,845	8,048	10,762	NEVADA
NEW HAMPSHIRE	977	732	891	0.82	1.12	536	15.64	8,383	7,466	10,191	NEW HAMPSHIRE
NEW JERSEY	7,515	756	652	1.16	1.53	755	14.15	10,683	6,961	9,209	NEW JERSEY
NEW MEXICO	1,424	569	856	0.66	1.17	740	13.78	10,193	8,730	15,356	NEW MEXICO
NEW YORK	17,735	548	487	1.12	2.05	612	16.49	10,095	4,921	8,982	NEW YORK
NORTH CAROLINA	6,165	657	709	0.92	1.41	773	14.26	11,028	7,815	11,898	NORTH CAROLINA
NORTH DAKOTA	686	633	1,008	0.62	0.99	624	12.46	7,778	7,838	12,384	NORTH DAKOTA
OHIO	10,752	687	734	0.93	1.36	671	14.13	9,487	6,966	10,135	OHIO
OKLAHOMA	3,298	669	843	0.79	1.13	760	14.65	11,140	9,394	14,046	OKLAHOMA
OREGON	2,674	777	816	0.95	1.23	655	14.64	9,595	7,832	10,074	OREGON
PENNSYLVANIA	11,901	628	595	1.05	1.68	715	14.68	10,492	6,243	9,946	PENNSYLVANIA
RHODE ISLAND	962	635	647	0.98	1.55	634	13.42	8,515	5,509	8,578	RHODE ISLAND
SOUTH CAROLINA	3,300	636	645	0.98	1.55	864	14.13	12,202	7,870	12,364	SOUTH CAROLINA
SOUTH DAKOTA	706	689	911	0.75	1.10	670	14.87	9,952	9,067	13,154	SOUTH DAKOTA
TENNESSEE	4,717	631	757	0.83	1.84	812	12.61	10,234	7,743	12,264	TENNESSEE
TEXAS	15,989	679	761	0.89	1.31	801	14.13	11,316	8,614	12,688	TEXAS
UTAH	1,652	562	660	0.85	1.52	742	14.41	10,694	7,059	12,553	UTAH
VERMONT	530	700	712	0.98	1.40	731	15.96	11,670	8,308	11,867	VERMONT
VIRGINIA	5,636	669	718	0.93	1.39	750	14.67	11,002	7,900	11,800	VIRGINIA
WASHINGTON	4,349	684	788	0.86	1.27	633	15.77	9,983	7,875	11,519	WASHINGTON
WEST VIRGINIA	1,952	619	706	0.87	1.42	649	14.16	9,196	6,491	10,485	WEST VIRGINIA
WISCONSIN	4,766	660	649	1.01	1.54	719	15.89	11,429	7,421	11,235	WISCONSIN
WYOMING	511	704	967	0.72	1.03	918	11.30	10,372	10,033	14,242	WYOMING
TOTAL	236,158	658	705	0.93	1.41	713	14.46	10,311	7,270	11,042	TOTAL

HIGHWAY TRAVEL AND FUEL CONSUMPTION

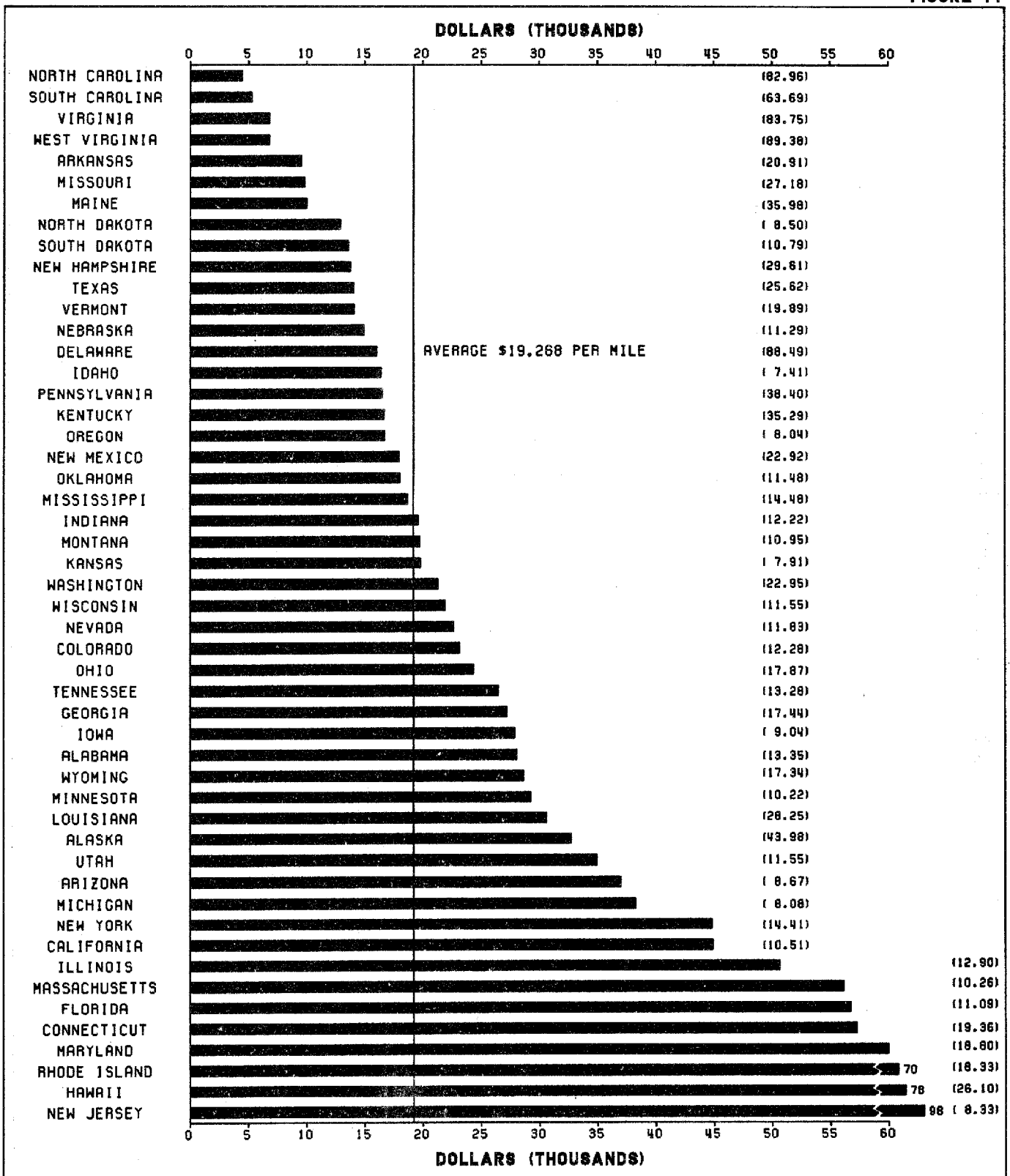
FIGURE 13



STATE CAPITAL OUTLAY PER MILE ON STATE-ADMINISTERED ROADS AND STREETS 1984

(EXCLUDING TOLL FACILITIES)

FIGURE 14



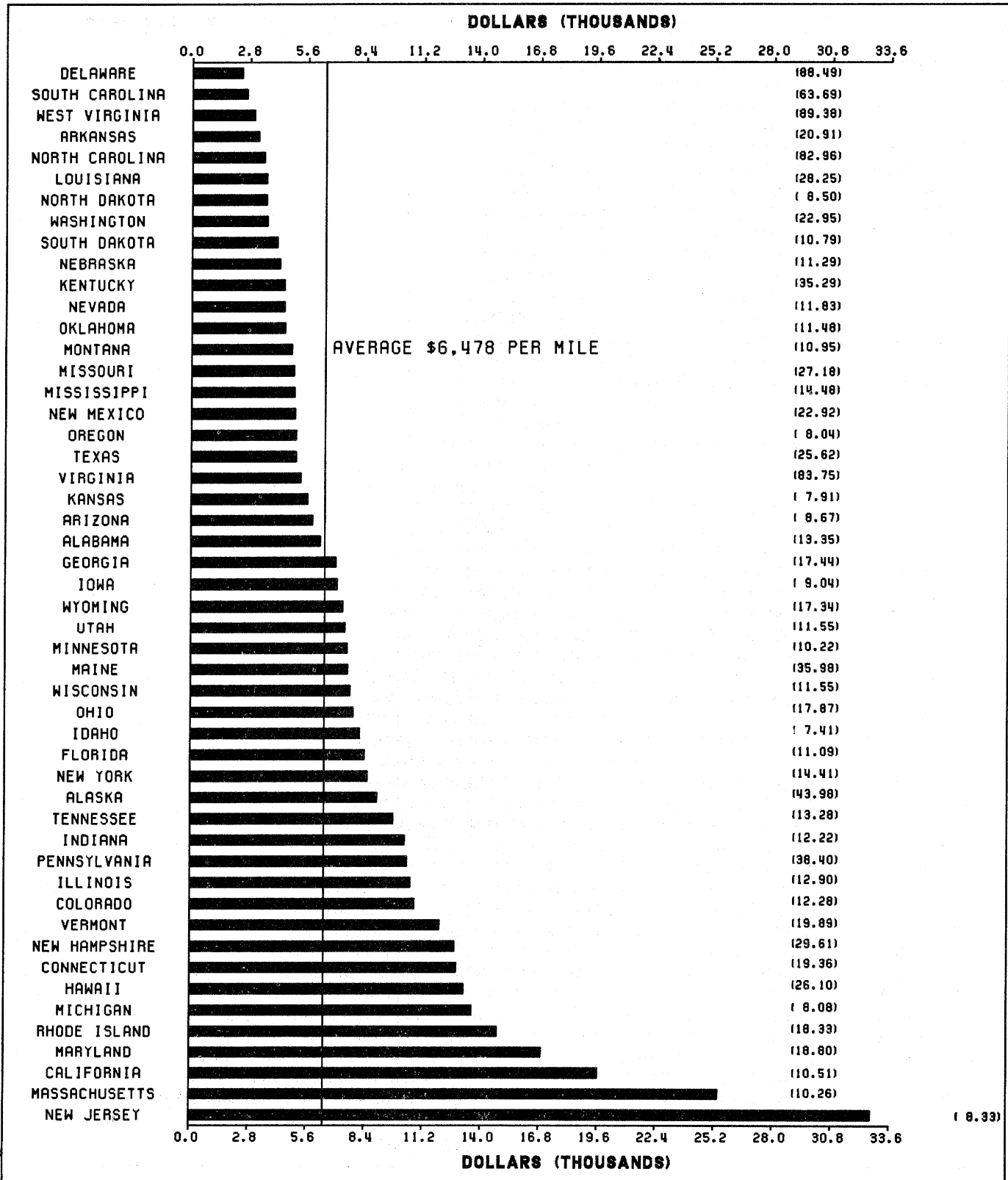
NOTE: THE NUMBERS IN PARENTHESES SHOW THE PERCENTAGE OF TOTAL MILEAGE UNDER STATE JURISDICTION.

STATE EXPENDITURES PER MILE FOR MAINTENANCE ON STATE-ADMINISTERED ROADS AND STREETS

1984

(EXCLUDING TOLL FACILITIES)

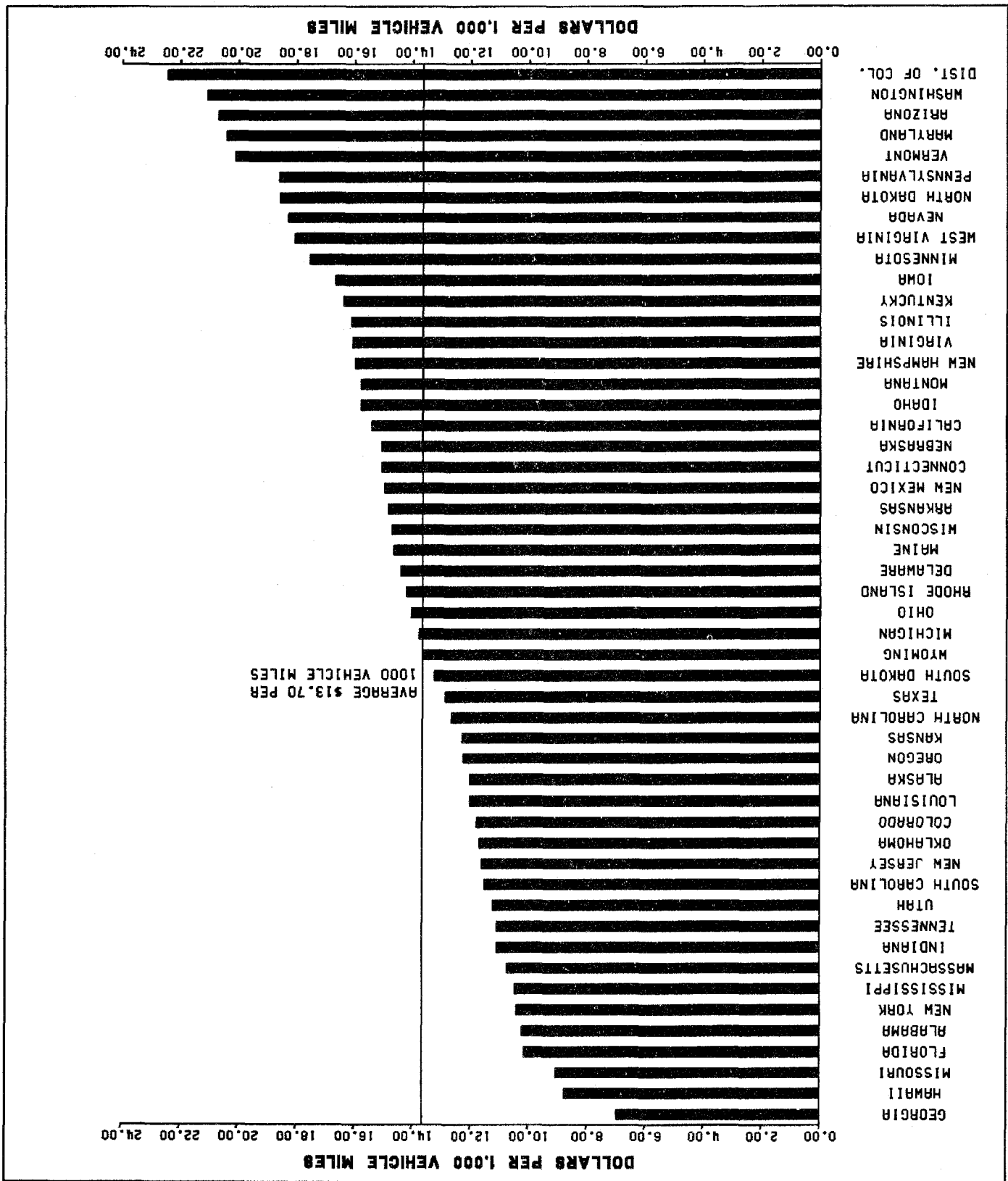
FIGURE 15



NOTE: THE NUMBERS IN PARENTHESES SHOW THE PERCENTAGE OF TOTAL MILEAGE UNDER STATE JURISDICTION.

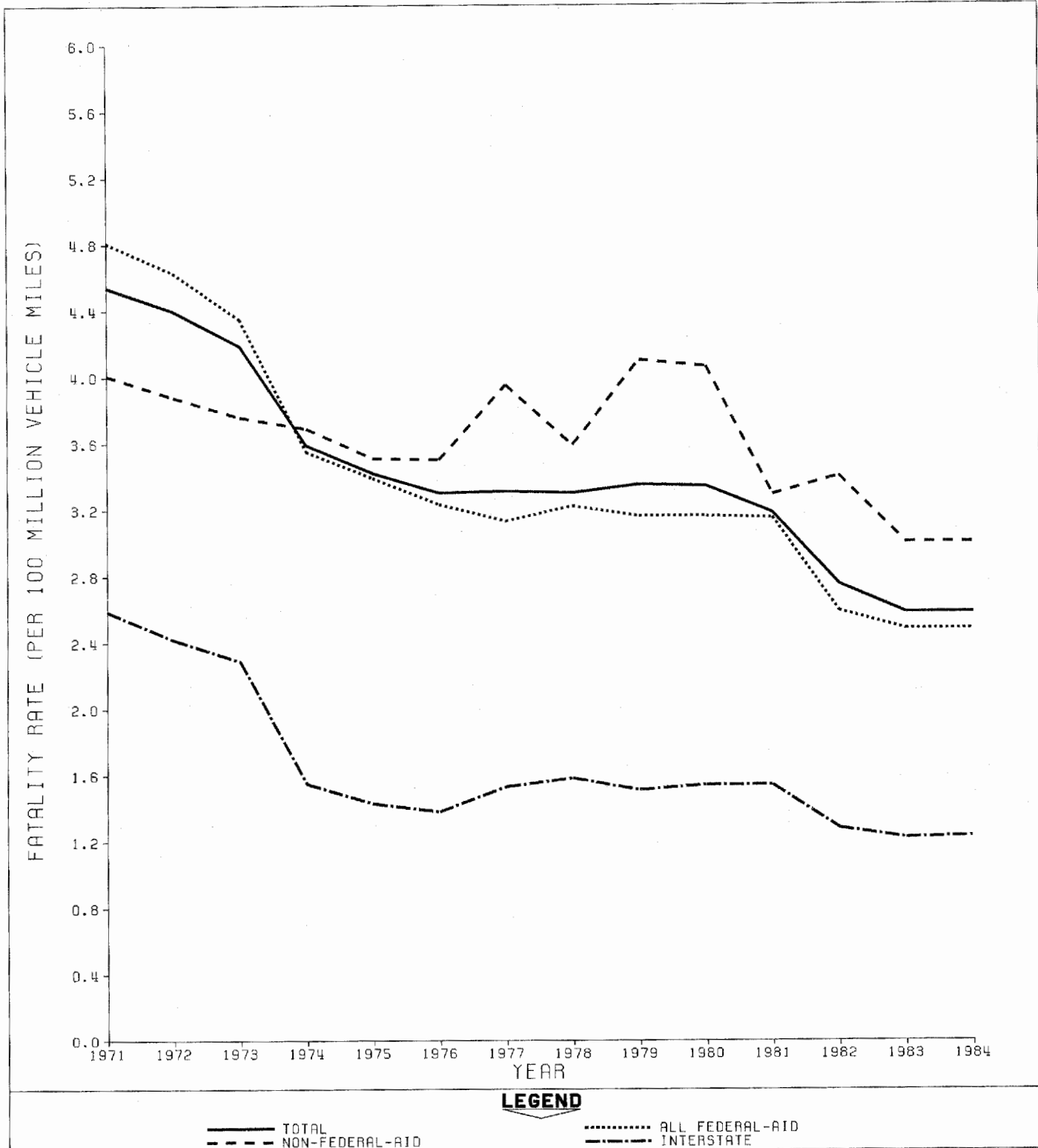
STATE HIGHWAY-USER REVENUE PER VEHICLE MILE OF TRAVEL 1984

FIGURE 18



FATALITY RATES FEDERAL-AID AND NON-FEDERAL-AID HIGHWAYS 1971 - 1984

FIGURE 17



SOURCE: FATAL AND INJURY ACCIDENT RATES ON FEDERAL-AID AND OTHER HIGHWAY SYSTEMS, 1971-1983 REPORTS, U.S. DOT, FEDERAL HIGHWAY ADMINISTRATION. THE 1984 TOTAL WAS ESTIMATED BY FHWA.

NOTE: BECAUSE OF CHANGES IN HIGHWAY SYSTEM DEFINITIONS EFFECTIVE JULY 1, 1976, NO DIRECT COMPARISONS CAN BE MADE BETWEEN 1976-84 DATA AND THAT OF EARLIER YEARS FOR ALL FEDERAL-AID HIGHWAYS AND NON-FEDERAL-AID HIGHWAYS.

TABLE OF CONTENTS

INTRODUCTION	Selected Highway Statistics and Charts	2
MOTOR FUEL	Highway Use of Motor Fuel in the United States	3
	Motor-Fuel Use	4
	State Motor-Fuel Receipts	5
	Gasohol as a Percent of Highway Use of Gasoline	6
	Special Fuel as a Percent of Highway Use of Motor Fuel	7
MOTOR VEHICLE	Total Motor-Vehicle Registrations	8
	Motor-Vehicle Registrations	9
	State Motor-Vehicle and Motor-Carrier Revenues	10
DRIVER LICENSE	Licensed Drivers, by Sex	11
	Driver Licenses in Force	12
	Licensed Drivers, by Age	13
FEDERAL TAXES	Net Revenue to the Highway Trust Fund	14
	Federal Highway Trust Fund	15
	Apportionment of Federal-Aid Highway Funds	16
	Apportionment of Federal-Aid Interstate Funds	17
HIGHWAY FINANCE	Total Receipts for Highways, by Government Units	18
	Total Disbursements for Highways, by Function	18
	Total Receipts and Disbursements for Highways	19
	State Receipts and Disbursements for Highways	19
	Highway Price Trends and Consumer Price Index	20
	Highway Expenditures, by Government Units	20
	Total State Highway User Revenue	21
	Disposition of Receipts from State Imposts	22
	State Highway Capital Outlay and Maintenance	23
ROADWAY	Total Road and Street Mileage, by Surface Type	24
	Existing Public Road and Street Mileage, by Functional Class	25
	Existing Public Road and Street Mileage, by Federal-Aid System	26
VEHICLE MILES	Annual Vehicle Miles of Travel by Category	27
	Annual Vehicle Miles of Travel by Functional Class	28
	Vehicle Trips, Vehicle Miles of Travel, and Average Trip Length	29
MISCELLANEOUS	Relationships - Population, Drivers, Vehicles	30
	Highway Travel and Fuel Consumption	31
	State Capital Outlay per Mile	32
	State Expenditures per Mile for Maintenance	33
	State Highway User Revenue Per Vehicle Mile	34
	Fatality Rates	35