

No. 780,746.

PATENTED JAN. 24, 1905.

N. T. HARRINGTON.
BODY FOR MOTOR VEHICLES.

APPLICATION FILED AUG. 16, 1904.

2 SHEETS—SHEET 1.

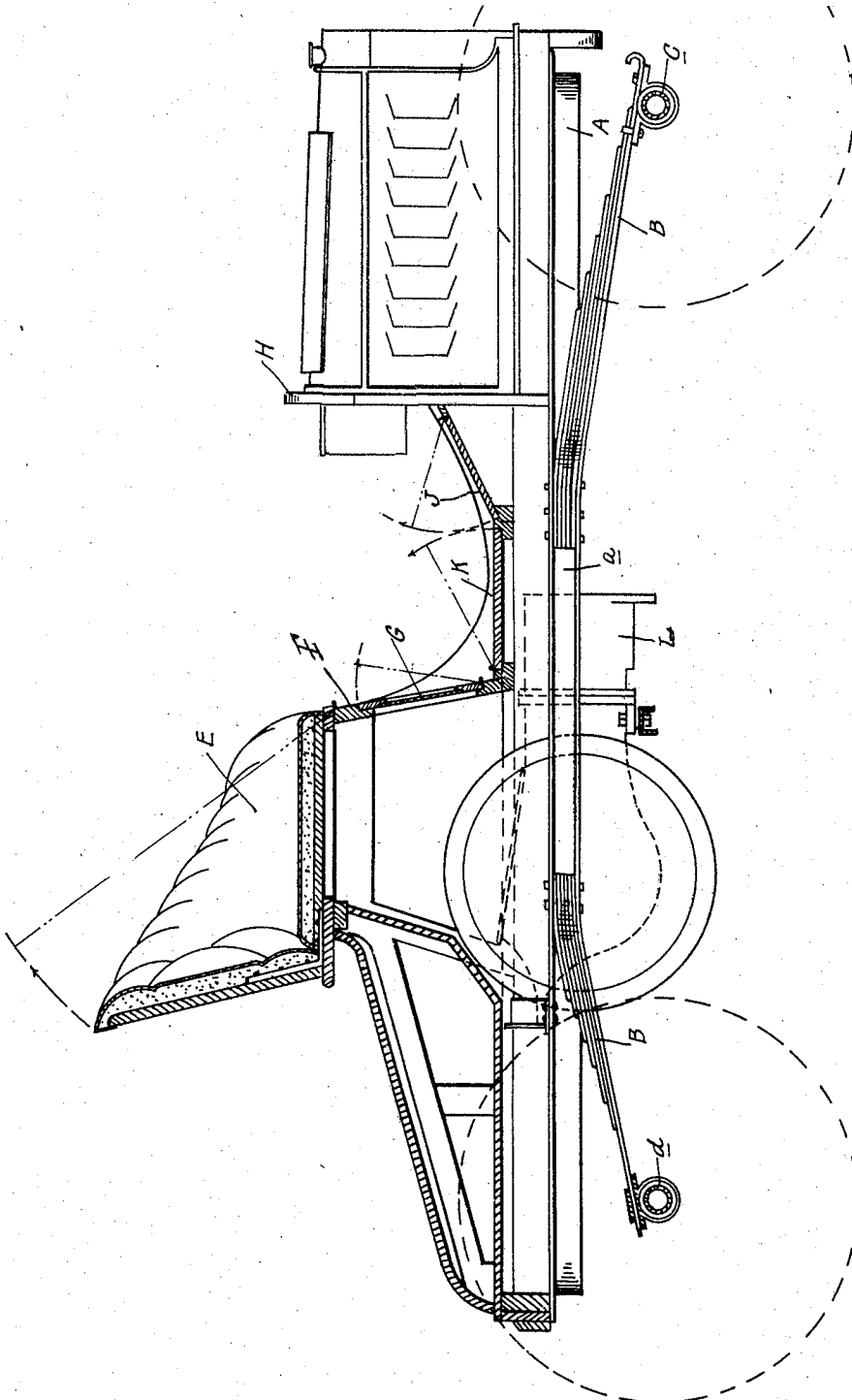


FIG. 1.

WITNESSES

Geo. H. Gannon
Geo. P. Barry

INVENTOR

NORMAN T. HARRINGTON.

BY

James Whittington

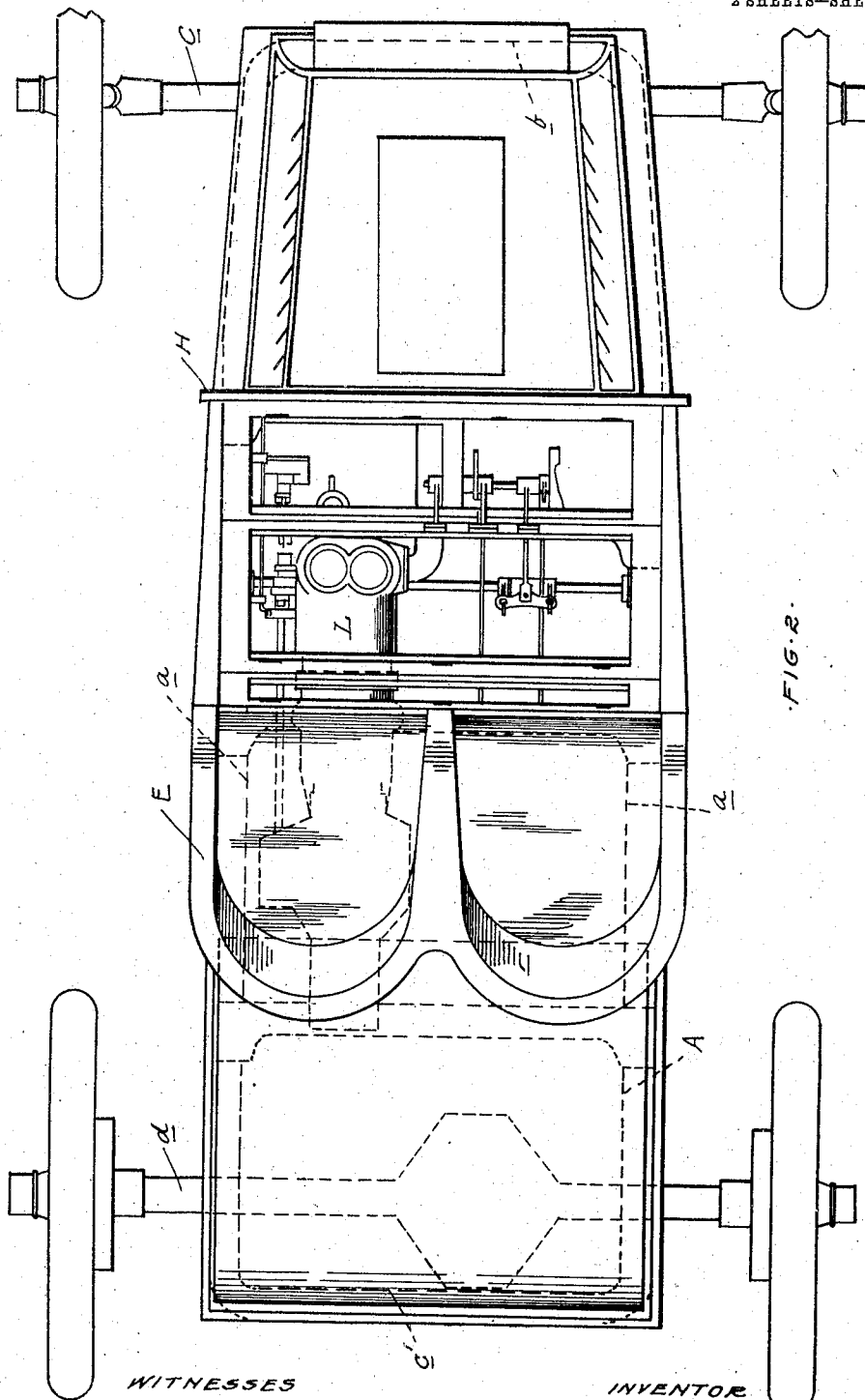
ATT'Y.

No. 780,746.

PATENTED JAN. 24, 1905.

N. T. HARRINGTON.
BODY FOR MOTOR VEHICLES.
APPLICATION FILED AUG. 16, 1904.

2 SHEETS—SHEET 2.



WITNESSES

Geo. H. Green
Geo. P. Barry

BY.

INVENTOR

NORMAN T. HARRINGTON.

James Whittington

ATT'Y.

UNITED STATES PATENT OFFICE.

NORMAN T. HARRINGTON, OF DETROIT, MICHIGAN, ASSIGNOR TO OLDS MOTOR WORKS, OF DETROIT, MICHIGAN, A CORPORATION OF MICHIGAN.

BODY FOR MOTOR-VEHICLES.

SPECIFICATION forming part of Letters Patent No. 780,746, dated January 24, 1905.

Application filed August 16, 1904. Serial No. 220,945.

To all whom it may concern:

Be it known that I, NORMAN T. HARRINGTON, a citizen of the United States, residing at Detroit, in the county of Wayne and State of Michigan, have invented certain new and useful Improvements in Bodies for Motor-Vehicles, of which the following is a specification, reference being had therein to the accompanying drawings.

The invention relates to motor-vehicles, and has particular reference to the construction of the body and the arrangement of the same upon the supporting-frame.

In the drawings, Figure 1 is a longitudinal section through the body and frame of the motor-vehicle, and Fig. 2 is a plan view of the frame.

A is the body-supporting frame, which is preferably of rectangular form, comprising the longitudinal side bars *a* and the forward and rear end bars *b* and *c*.

B represents spring arms extending forward and rearward of the body and attached to the side bars of the frame A at points intermediate their ends. The free ends of the spring-arms are supported upon the forward and rear axles *c* and *d*.

The body comprises a seat E, which is hinged at its forward edge to the seat-frame F, so as to be capable of folding downward adjacent to the front panel G of said frame.

H is the dashboard, and I is a footboard, which is provided with two hinged panels J and K. The panel J is adapted to turn upward adjacent to the dash H, while the panel K can be swung adjacent to the panel G.

The arrangement of mechanism supported by the vehicle-frame is such that the engine L has its cylinder and valve mechanism arranged beneath the footboard. Thus by turning up the panels K and J access may be had to the mechanism beneath. The panel G of the seat-frame is also preferably hinged at its lower edge, so as to be capable of folding downward to permit of access to the parts beneath the seat-frame, and for further access thereto the seat E may be turned down adjacent to said panel.

What I claim as my invention is—

1. In a motor-vehicle the combination with body and supporting-frame therefor, of cross-

bars on said frame and an engine extending horizontally between said cross-bars and secured thereto, having its cylinder projecting forward, said cylinder being located beneath a hinged panel of the footboard of the body.

2. In a motor-vehicle, a body comprising a seat, a dash and a footboard the latter having a panel thereof hinged to turn up adjacent to said seat.

3. In a motor-vehicle, a body comprising a seat, a dash and a footboard the latter having oppositely-disposed hinged portions the rear portion thereof arranged to fold adjacent to said seat and the front portion arranged to fold adjacent to said dash.

4. In a motor-vehicle, a body comprising a seat, a dash and a footboard, the latter having oppositely-disposed hinged portions the rear portion being horizontal and adapted to fold adjacent to said seat, and a forward portion inclining and adapted to fold adjacent to said dash.

5. In a motor-vehicle, a body comprising a seat-frame provided with a front panel, a dash and a footboard having a section hinged to fold upward adjacent to said panel, and a seat hinged to fold downward adjacent to said panel.

6. In a motor-vehicle, a body comprising a seat-frame provided with a front panel, a dash, a footboard having two hinged sections adapted to fold upward respectively adjacent to said panel and dash, and a seat hinged to said frame adapted to fold downward adjacent to said panel.

7. In a motor-vehicle, a body comprising a seat-frame provided with a front panel hinged adjacent its lower end to swing downwardly adjacent the footboard, said footboard having oppositely-disposed hinged sections adapted to fold upward respectively adjacent to said panel and the dashboard, and a seat hinged to said seat-frame adapted to fold downward adjacent the panel of said frame.

In testimony whereof I affix my signature in presence of two witnesses.

NORMAN T. HARRINGTON.

Witnesses:

JAS. P. BARRY,
E. D. AULT.