

## Case 397 : Narrative

Case Vehicle (A): 2002 Ford	Vehicle (B): 2000 Ford
Type: Mustang GT, 2-door coupe	Type: Taurus SE, 4-door sedan
Driver: 44-year-old male	Driver: 19-year-old male
CDC: 12-FREE-6	CDC: 12-FREW-3, 00-TDDO-3

### SITUATION

[1](#) It was daylight and the five-lane east-west asphalt road, with a posted speed limit of 45 mph (72 kph), was dry and in good condition. [2](#) Case vehicle (A) was traveling east at a driver-estimated speed of 45 mph (72 kph) in the left eastbound lane [3](#) and vehicle (B) was traveling west at an unknown speed in the center turn lane. As the two vehicles approached each other at a T-type intersection with a divided two-lane road to the south, the driver of vehicle (B) began a left turn to travel south on the intersecting road and entered the left eastbound lane in front of case vehicle (A). The driver of case vehicle (A) applied the brakes but did not make any other evasive maneuvers, and the right front of case vehicle (A) struck the right front of vehicle (B). [4](#) Case vehicle (A) rotated clockwise approximately 170° and came to rest straddling the eastbound lanes facing southwest. Vehicle (B) rotated clockwise while moving to the south, [5](#) struck a curb with its left-rear wheel, and rolled two quarter turns with the driver side leading before [6](#) coming to rest on its roof at the intersection of the two roads, facing west. Both vehicles were towed due to damage.

The police report indicates B-level injuries for the drivers of case vehicle (A) and vehicle (B). Both drivers were transported by ambulance to an area hospital and both were treated and released.

### GENERAL VEHICLE DAMAGE AND ESTIMATED CRASH SEVERITIES

[7](#) Damage to the right front of case vehicle (A) was severe. [8](#) Direct damage began at the right-front bumper corner and extended 39-cm across the front to the left of the right headlight assembly, resulting in 33% vehicle overlap (VOL). [9](#) The maximum rearward crush was 63 cm and occurred at the right-front bumper corner.

[10](#) Damage to the right front of vehicle (B) was also severe. [11](#) Direct damage began at the right-front bumper corner and extended 46-cm across the front to the left of the right headlight assembly, resulting in 35% VOL. [12](#) The maximum rearward crush was 50 cm and it occurred at the right-front bumper corner. [13](#) The maximum downward crush from the rollover was 22 cm and occurred at the right-front corner of the roof. [14](#) The right wheelbase was reduced by 17 cm and [15](#) the left wheelbase was increased by 6 cm.

Using the WinSMASH crash-reconstruction program and [16](#) [17](#) [18](#) crush profiles measured for the front of case vehicle (A) and [19](#) [20](#) [21](#) vehicle (B) at the level of the bumpers, the following impact severities were estimated for the offset-frontal impacts:

	Calculated Velocity Change - kph (mph)
--	--

Vehicle	Variable	Total	Longitudinal	Latitudinal
Case Vehicle (A)	delta V	34 (21)	-33 (-21)	6 (4)
Vehicle (B)	delta V	32 (20)	-31 (-20)	-6 (-3)

## DESCRIPTION OF DAMAGE TO CASE VEHICLE (A)

### Exterior

[22](#) In the front, the right portions of the bumper and the hood were crushed to the rear. The hood was buckled and the hood latch was damaged and jammed closed. The right hood hinge was deformed and [23](#) the rear edge of the hood was slightly elevated, but it did not contact the windshield, [24](#) which was cracked throughout and [25](#) holed along the right edge due to deformation of the upper section of the right A-pillar. [26](#) The roof was deflected up and the center-right portion was buckled.

On the right side, [27](#) the fender, the right-front wheel, and the upper and lower sections of the right A-pillar were crushed to the rear, causing the right wheelbase to be reduced by 49 cm and the right door to be jammed closed. [28](#) The rim of the right-front wheel was broken, the tire was flat, and wheel rotation was restricted by contact with the wheelwell/lower A-pillar. [29](#) [30](#) The outer panel of the right door was displaced to the right, [31](#) the upper section of the right B-pillar and the right side of the roof above the B-pillar were buckled and displaced slightly to the rear, and the right quarter panel was buckled.

[32](#) There was no damage to the rear of the vehicle.

[33](#) On the left side, the fender was deflected to the right, [34](#) the trim to the rear of the driver door was knocked off, [35](#) the driver door was closed and operational, and the left-side glazing was intact. The left wheelbase was increased by 5 cm.

### Interior

This vehicle was equipped with steering-wheel and dash-mounted frontal-impact airbags and [36](#) [37](#) [38](#) [39](#) both deployed in the frontal impact. [40](#) [41](#) [42](#) [43](#) In the driver area, there was no damage to the steering-wheel airbag or to the module covers/flaps, but the upper portion of the fabric was stained with an unknown substance. [44](#) [45](#) There was no damage to the steering-wheel rim or spokes and [46](#) there was no rotation of the steering column. [47](#) The roof headliner and the roof above the windshield were buckled, [48](#) the plastic knee bolster cover was scuffed and bowed, and the gas and brake pedals were deflected to the right. [49](#) [50](#) There was no other damage in the driver area.

[51](#) In the center-front area, the right half of the upper instrument panel, the upper vent outlets and the vertical console trim were displaced up. The transmission lever trim was knocked off, and the center console trim and the transmission lever were displaced to the right. There was no other damage in the center-front area.

In the right-front seating area, [37](#) [38](#) [39](#) there was no damage to the dash-mounted airbag, but the fabric was stained with an unknown substance. [52](#) [53](#) The upper instrument panel was buckled up causing slight bowing of the dash-mounted airbag module covers. [54](#) The headliner and roof were buckled [55](#) [56](#) and the upper section of the right A-pillar and the windshield header were displaced to the rear, resulting in upward deflection of the roof siderail. [57](#) The right portion of the upper instrument panel was broken and the right portion of the mid instrument panel was buckled, which loosened the right upper vent

outlet. [58](#) The glove box and the right kickpanel were displaced to the rear and to the left, the toepan was displaced to the rear, and the floorpan was buckled. [59](#) [60](#) The lower section of the A-pillar and the forward portion of the right door were displaced to the left, resulting in an outward bend in the interior door panel and breaking and knocking loose of the plastic door trim and door hardware. There was no damage to the right-front seat but the fore-aft seat adjuster was jammed with the seat in a rear seat-track position.

[61](#) [62](#) In the rear-seating area, the left and right floorpans were buckled up, and [63](#) the forward portion of the right-rear side panel was bowed out. There was no other damage in the rear-seating area.

The following intrusions were noted and measured:

Location	Component	Distance (cm)	Direction
Driver	transmission tunnel <a href="#">64</a>	13	to left
	knee bolster - right <a href="#">65</a>	8	to rear
	knee bolster - left	2	to rear
Center front	vertical console <a href="#">66</a>	7	to rear
Right front	A-pillar <a href="#">67</a>	41	to rear
	toeapan <a href="#">58</a>	31	to rear
	glove box <a href="#">68</a>	29	to rear
	A-pillar <a href="#">69</a>	10	to left
	kick panel <a href="#">70</a>	10	to left
	door <a href="#">71</a>	5	to left
Left rear	floor <a href="#">72</a>	8	up
Right rear	floor <a href="#">62</a>	8	up

## OCCUPANT KINEMATICS AND INJURIES

[73](#) The 173-cm, 91-kg (5-ft 8-in, 200-lb) 44-year-old male driver was using the three-point belt and [74](#) the frontal-impact airbag deployed. [75](#) Webbing load marks on the front portion of the D-ring and [76](#) [77](#) on the sliding latch plate are evidence of belt use at the time of the crash.

On impact, the driver moved forward and slightly to right relative to the vehicle interior, into the belt restraints, the airbag, and the knee bolster. He sustained an abrasion to the left side of the face near the eye, probably from contact by the deploying airbag. He sustained cervical strain, probably due to impact forces. He sustained an abrasion to the left shoulder and a contusion to the abdomen, probably from loading by the shoulder and lap belts, respectively. He sustained abrasions to the left arm, the left elbow, and the dorsal aspect of the left hand, possibly from the airbag flinging his left upper extremity into the interior panel of the driver door. He sustained contusions to the medial aspects of the left and right forearms, probably due to contact by the deploying airbag. He sustained a strain to the right hand, probably from contact with the steering-wheel rim. He sustained an abrasion to the right leg below the knee, probably due to contact with the knee bolster below the steering column, [78](#) as evidenced by scuffmarks. He also sustained a contusion to the right calf, probably from contact with the front of the driver seat cushion.

The following table and attached drawing [79](#) summarize the injuries for the driver of case vehicle (A).

Occupant: Driver	Age: 44 years	Gender: Male		
Restraints: 3-point belt; steering-wheel airbag	Stature: 173 cm (5 ft, 8 in)	Mass: 91 kg (200)		
Injury Description	A.I.S.	Injury Source		
		Definite	Probable	Possible
—	—	—	—	—
Abrasion, left side of the face near eye	1	—	Airbag	—
Contusions, medial aspects of right and left forearms	1	—	Airbag	—
Cervical strain	1	—	Impact forces	—
Abrasion, left shoulder	1	—	Shoulder belt	—
Contusion, abdomen	1	—	Lap belt	—
Abrasions, left arm, left elbow, and dorsal aspect of left hand	1	—	—	Interior of driver door (airbag fling)
Strain, right hand	1	—	Steering-wheel rim	—
Abrasion, right leg below knee	1	—	Knee bolster	—
Contusion, right calf	1	—	Driver seat cushion	—
Maximum A.I.S. Level	1	—	—	—
Injury Severity Score	3	—	—	—

CASE NO.: 397

CASE VEHICLE: 2002 Ford

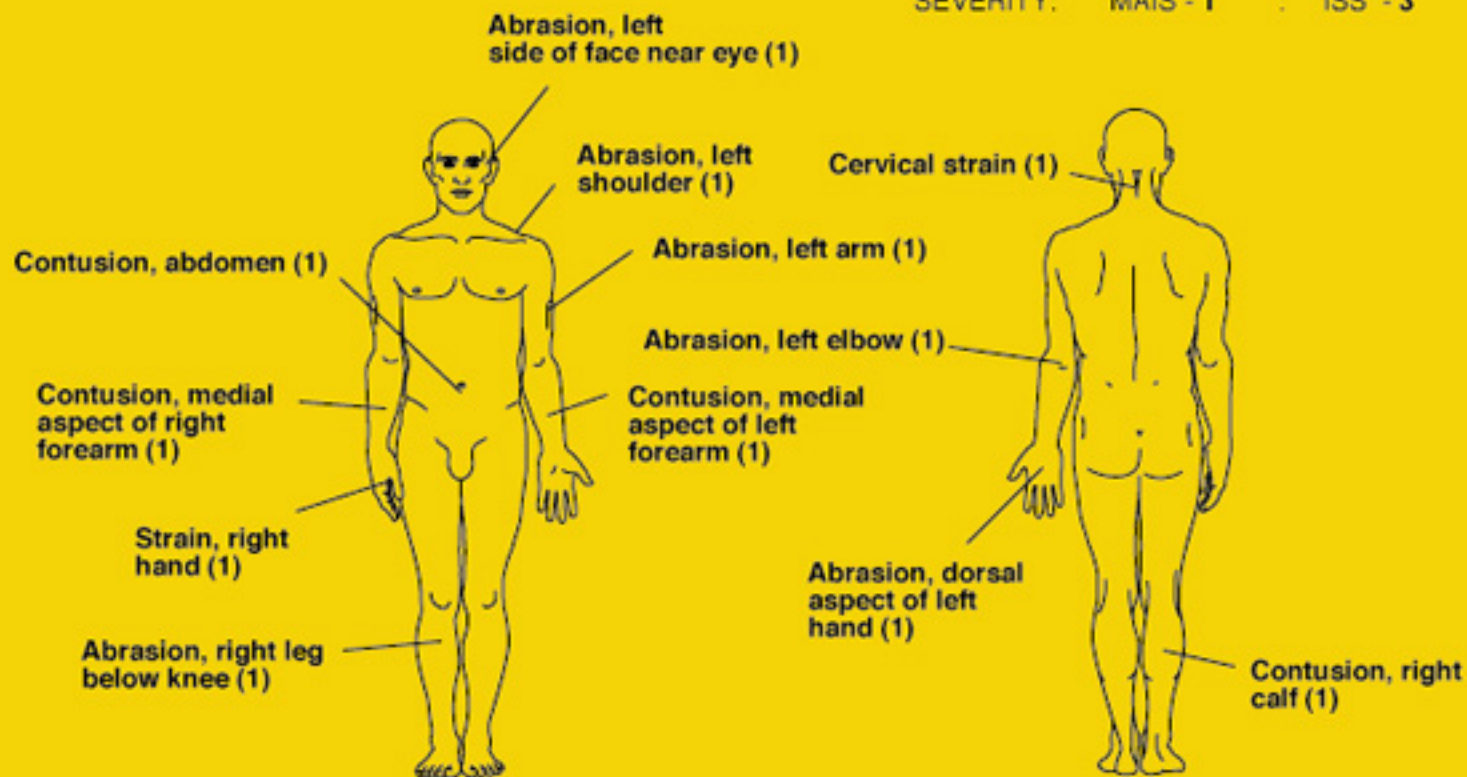
TYPE: Mustang GT, 2-door coupe

OCCUPANT: Driver: 44-year-old male

STATURE: 173 cm (5 ft, 8 in) MASS: 91 kg (200 lb)

RESTRAINTS: 3-point belt, steering-wheel airbag

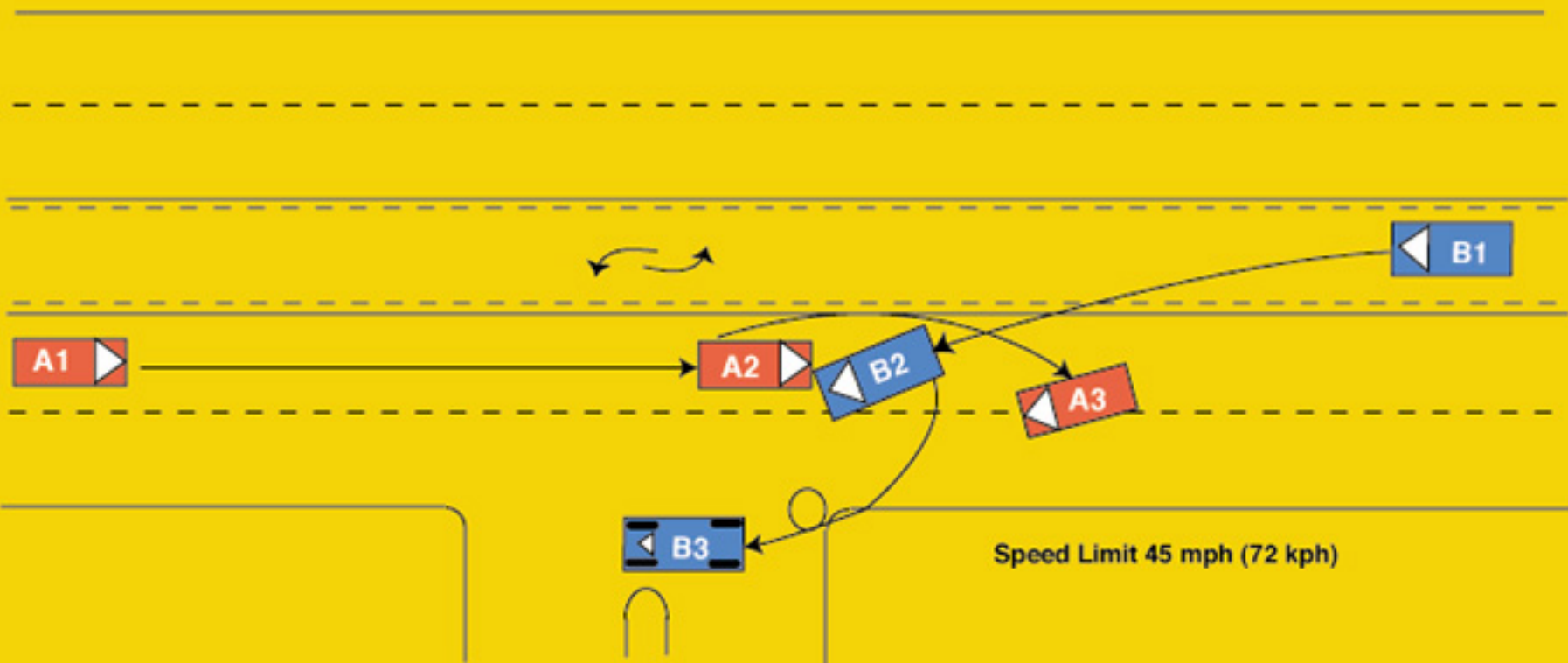
SEVERITY: MAIS - 1 : ISS - 3



Case No.: 397  
Case Veh. (A): 2002 Ford  
Type: Mustang GT, 2-door coupe  
Driver: 44-year-old male  
Veh. (B): 2000 Ford Taurus SE, 4-door sedan

Light Conditions: Daylight  
Weather: Clear  
Road Surface: Dry  
Road Construction: Asphalt

North



# Vehicle Report

Click on Section Name to jump directly to that Section —

- [General Conditions](#)
- [Other Vehicle](#)
- [Case Vehicle General](#)
- [Case Vehicle Damage Description](#)
- [Crash Severity](#)
- [Case Vehicle Tires & Rims](#)
- [Case Vehicle Fuel, Tank, Fire](#)
- [Case Vehicle Exterior](#)
- [Case Vehicle Steering Column/Rim](#)
- [Case Vehicle Intrusion](#)
- [Case Vehicle Airbag\(s\)](#)
- [Case Vehicle Interior](#)
- [Case Vehicle Seats](#)

---

## General Conditions

[Back to Top](#)

Variable Number and Name	Code Value	Code Description	Other Options
V206 — Urban/Rural Area	1	Urban	<a href="#">more</a>
V207 — Limited Access Highway	0	No	<a href="#">more</a>
V208 — Road Total Lanes	4	4 lanes or more	<a href="#">more</a>
V209 — Intersecting Road Total Lanes	5	Divided, 4 lanes or more	<a href="#">more</a>
V210 — Road Surface Type	1	Asphalt	<a href="#">more</a>
V211 — Road Defects	0	No	<a href="#">more</a>
V212 — Construction Zone	0	No	<a href="#">more</a>
V213 — Road Alignment Vertical Plane	1	Level	<a href="#">more</a>
V214 — Road Alignment Horizontal Plane	1	Straight	<a href="#">more</a>
V215 — Surface Covering	10	Dry	<a href="#">more</a>
V216 — Visibility Limitation	0	None	<a href="#">more</a>
V217 — Visibility Obstruction	0	None	<a href="#">more</a>
V218 — Speed Limit	4	71-79 km/h .. 45 mph	<a href="#">more</a>
V219 — Precipitation Type	0	None	<a href="#">more</a>
V220 — Precipitation Rate	8	Not applicable	<a href="#">more</a>
V221 — Temperature	9	Unknown	<a href="#">more</a>



V222 — Crosswind	9	Unknown	<a href="#">more</a>
V223 — Light Conditions	1	Daylight	<a href="#">more</a>
V224 — Mechanical Malfunction Mention	0	No	<a href="#">more</a>
V225 — Case Vehicle and Object	0	No	<a href="#">more</a>
V226 — Case Vehicle Rollover	0	No	<a href="#">more</a>
V227 — Case Vehicle Ran Off Roadway	0	No	<a href="#">more</a>
V228 — Moving Case Vehicle/Contacted Moving Vehicle	1	Yes	<a href="#">more</a>
V229 — Case Vehicle/Contacted Stopped Vehicle	0	No	<a href="#">more</a>
V230 — Stopped Case Vehicle/Contactd Vehicle	0	No	<a href="#">more</a>
V231 — Total Vehicles Hit By Case Vehicle	1	1 vehicle	<a href="#">more</a>
V232 — Any Fire in Crash	0	No	<a href="#">more</a>
V233 — Max Police Severity-PAR	2	B - Non-Incapacitating Injury	<a href="#">more</a>
V234 — Driver Alcohol Involvement	0	Had not been drinking	<a href="#">more</a>
V235 — Driver Alcohol BAC	80	Not tested	<a href="#">more</a>
V236 — Driver Impairment Mention	0	No	<a href="#">more</a>
V237 — Driven/Towed From Scene	2	Towed Due to Damage	<a href="#">more</a>

## Other Vehicle

[Back to Top](#)

Variable Number and Name	Code Value	Code Description	Other Options
V301 — Other Vehicle VIN	1FAFP53U8YG2	—	—
V302 — Other Vehicle Manufacturer/Body Code	12128	—	—
V303 — Other Vehicle Manufacturer	121	Ford	<a href="#">more</a>
V304 — Other Vehicle Body Code	28	Intermediate 105-109.9 in. wb.	<a href="#">more</a>
V305 — Other Vehicle Make/Model	0275	Taurus	<a href="#">more</a>
V306 — Other Vehicle Model Year	2000	—	—
V307 — Other Vehicle Mass	001522 kg	—	—
V308 — Other Vehicle Number	2	Vehicle #2	<a href="#">more</a>
V309 — Other Vehicle Number of Occupants	01	—	—
V310 — Other Vehicle Traveling Speed	999	Unknown	<a href="#">more</a>



V311 — Highest Police Injury Severity	2	B - Non-Incapacitating Injury	<a href="#">more</a>
V312 — Other Vehicle Type	28	Intermediate 105-109.9 in. wb.	<a href="#">more</a>
V313 — Other Vehicle Wheelbase (cm)	276 cm	—	—
V314 — Average Track Width	157 cm	—	—
V315 — Overall Length	502 cm	—	—
V316 — Overall Width (OAW)	186 cm	—	—
V317 — Front Overhang (FOH)	106 cm	—	—
V318 — Rear Overhang (ROH)	121 cm	—	—
V319 — Undeformed End Width (UEW)	148 cm	—	—
V320 — Engine Displacement	3.0 l	—	—
V321 — Engine: Number of Cylinders	06	—	—
V322 — Direct Damage Length (DDL)	046 cm	—	—
V323 — Front-End Overlap % (FEO)	31	—	—
V324 — Vehicle Overlap % (VOL)	35	—	—

## Case Vehicle General



[Click for case vehicle figure](#)

[Back to Top](#)

Variable Number and Name	Code Value	Code Description	Other Options
V401 — VIN	1FAFP42X02F1	—	—
V402 — Manufacturer/Body Code	12127	—	—
V403 — Vehicle Manufacturer	121	Ford	<a href="#">more</a>
V404 — Vehicle Body Code	27	—	—
V405 — Make/Model Code	0244	Mustang, Mustang II	<a href="#">more</a>
V406 — Model Year	2002	—	—
V407 — Vehicle Mass	001490 kg	—	—
V408 — Odometer Reading	888888	—	—
V409 — Number of Occupants	01	—	—
V410 — Traveling Speed	072 kph	—	—
V411 — Body Type	12	2-door sedan or coupe (any upper B-pillar)	<a href="#">more</a>
V412 — Stolen Vehicle	8	Not currently collected	<a href="#">more</a>
V413 — Body Structure	2	Unitized	<a href="#">more</a>
V414 — Transmission Type	1	Automatic	<a href="#">more</a>

V415 — Transmission Lever Location	2	Console	<a href="#">more</a>
V416 — Steering	1	Power	<a href="#">more</a>
V417 — Brakes	1	Power	<a href="#">more</a>
V418 — Brake Type	2	Disc - front wheels	<a href="#">more</a>
V419 — Brake Anti-lock Device	2	Four-wheel	<a href="#">more</a>
V420 — Air Conditioning in Vehicle	8	Not currently collected	<a href="#">more</a>
V421 — Drive Type	1	Rear wheel	<a href="#">more</a>
V422 — Dual Rear Wheels	0	No	<a href="#">more</a>
V423 — Original Restraint System Type	3	Airbag	<a href="#">more</a>
V424 — Equipped With Roll Bar	0	No	<a href="#">more</a>
V425 — Roof Type	1	Solid	<a href="#">more</a>
V426 — Wheelbase	257 cm	—	—
V427 — Anti-lacerative Glass	0	None	<a href="#">more</a>
V428 — Average Track Width	153 cm	—	—
V429 — Overall Length	465 cm	—	—
V430 — Overall Width (OAW)	186 cm	—	—
V431 — Front Overhang	104 cm	—	—
V432 — Rear Overhang	105 cm	—	—
V433 — Undeformed End Width (UEW)	142 cm	—	—
V434 — Engine Displacement	4.6 l	—	—
V435 — Engine: Number of Cylinders	08	—	—
V436 — Direct Damage Length (DDL)	039 cm	—	—
V437 — Front End Overlap % (FEO)	27	—	—
V438 — Vehicle Overlap % (VOL)	33	—	—

## Case Vehicle Damage Description

[Back to Top](#)

Variable Number and Name	Code Value	Code Description	Other Options
V501 — Maximum Crush - Front	063 cm	—	—
V502 — Maximum Crush - Right Side	000 cm	No crush (or less than 1 cm.)	<a href="#">more</a>
	000 cm	No crush (or	

V503 — Maximum Crush - Rear		less than 1 cm.)	<a href="#">more</a>
V504 — Maximum Crush - Left Side	000 cm	No crush (or less than 1 cm.)	<a href="#">more</a>
V505 — Maximum Crush - Roof	000 cm	No crush (or less than 1 cm.)	<a href="#">more</a>
V506 — Maximum Crush - Other	000 cm	No crush (or less than 1 cm.)	<a href="#">more</a>
V507 — Are Events In Chronological Order	1	Yes	<a href="#">more</a>
V508 — Event 1 Impact Location	1	On Roadway	<a href="#">more</a>
V509 — Event 1 Impact Configuration	11	FRONT of case veh - FRONT of contacted Vehicle	<a href="#">more</a>
V510 — Event 1 Object/Vehicle Contacted	28	Intermediate 105-109.9 in. wb.	<a href="#">more</a>
V511 — Event 2 Impact Location	8	No 2nd event	<a href="#">more</a>
V512 — Event 2 Impact Configuration	88	No 2nd event	<a href="#">more</a>
V513 — Event 2 Object/Vehicle Contacted	00	No object/vehicle contacted	<a href="#">more</a>
V514 — Event 3 Impact Location	8	No 3rd event	<a href="#">more</a>
V515 — Event 3 Impact Configuration	88	No 3rd event	<a href="#">more</a>
V516 — Event 3 Object/Vehicle Contacted	00	No object/vehicle contacted	<a href="#">more</a>
V517 — Event 4 Impact Location	8	No 4th event	<a href="#">more</a>
V518 — Event 4 Impact Configuration	88	No 4th event	<a href="#">more</a>
V519 — Event 4 Object/Vehicle Contacted	00	No object/vehicle contacted	<a href="#">more</a>
V520 — Event 5 Impact Location	8	No 5th event	<a href="#">more</a>
V521 — Event 5 Impact Configuration	88	No 5th event	<a href="#">more</a>
V522 — Event 5 Object/Vehicle Contacted	00	No object/vehicle contacted	<a href="#">more</a>
V523 — Event 6 Impact Location	8	No 6th event	<a href="#">more</a>
V524 — Event 6 Impact Configuration	88	No 6th event	<a href="#">more</a>

V525 — Event 6 Object/Vehicle Contacted	00	No object/vehicle contacted	<a href="#">more</a>
V526 — Event 7 Impact On Road	8	No 7th event	<a href="#">more</a>
V527 — Event 7 Impact Configuration	88	No 7th event	<a href="#">more</a>
V528 — Event 7 Object/Vehicle Contacted	00	No object/vehicle contacted	<a href="#">more</a>
V529 — Primary CDC Case Vehicle -event Number	1	Event 1	<a href="#">more</a>
V530 — Primary CDC Case Vehicle - impact speed	999	Unknown	<a href="#">more</a>
V531 — Primary CDC Case Vehicle - Estimated By	1	Investigator	<a href="#">more</a>
V532 — Primary CDC Case Vehicle -crush	063	—	—
V533 — Primary CDC Case Vehicle -clock #1	12	12 o'clock	<a href="#">more</a>
V534 — Primary CDC Case Vehicle letter 1 #1	06	F - Front	<a href="#">more</a>
V535 — Primary CDC Case Vehicle letter 2 #1	18	R - Right (Front or Rear)	<a href="#">more</a>
V536 — Primary CDC Case Vehicle letter 3 #1	05	E - Everything below belt line	<a href="#">more</a>
V537 — Primary CDC Case Vehicle letter 4 #1	05	E - Corner (extends from corner to = or < 16 in [410mm])	<a href="#">more</a>
V538 — Primary CDC Case Vehicle Extent #1	06	Extent 6	<a href="#">more</a>
V539 — Primary CDC Case Vehicle -CDC #1	12FREE6	—	—
V541 — Primary CDC Case Vehicle letter 1 #2	00	Missing Data/Not applicable	<a href="#">more</a>
V542 — Primary CDC Case Vehicle letter 2 #2	00	Missing Data/Not applicable	<a href="#">more</a>
V543 — Primary CDC Case Vehicle letter 3 #2	00	Missing Data/Not applicable	<a href="#">more</a>
V544 — Primary CDC Case Vehicle letter 4 #2	00	Missing Data/Not applicable	<a href="#">more</a>
	00	Missing	

V545 — Primary CDC Case Vehicle Extent #2		Data/Not applicable	<a href="#">more</a>
V546 — Primary CDC Case Vehicle -CDC #2	9800000	—	—
V547 — Primary CDC Contacted Vehicle - Impact Speed	999	Unknown	<a href="#">more</a>
V548 — Primary CDC Contacted Vehicle - Estimated By	1	Investigator	<a href="#">more</a>
V549 — Primary CDC Contacted Vehicle -crush	050	—	—
V550 — Primary CDC Contacted Vehicle -clock #1	12	12 o'clock	<a href="#">more</a>
V551 — Primary CDC Contacted Vehicle letter 1 #1	06	F - Front	<a href="#">more</a>
V552 — Primary CDC Contacted Vehicle letter 2 #1	18	R - Right (Front or Rear)	<a href="#">more</a>
V553 — Primary CDC Contacted Vehicle letter 3 #1	05	E - Everything below belt line	<a href="#">more</a>
V554 — Primary CDC Contacted Vehicle letter 4 #1	23	W - Wide impact area	<a href="#">more</a>
V555 — Primary CDC Contacted Vehicle Extent #1	03	Extent 3	<a href="#">more</a>
V556 — Primary CDC Contacted Vehicle -CDC #1	12FREW3	—	—
V558 — Primary CDC Contacted Vehicle letter 1 #2	00	Missing Data/Not applicable	<a href="#">more</a>
V559 — Primary CDC Contacted Vehicle letter 2 #2	00	Missing Data/Not applicable	<a href="#">more</a>
V560 — Primary CDC Contacted Vehicle letter 3 #2	00	Missing Data/Not applicable	<a href="#">more</a>
V561 — Primary CDC Contacted Vehicle letter 4 #2	00	Missing Data/Not applicable	<a href="#">more</a>
V562 — Primary CDC Contacted Vehicle Extent #2	00	Missing Data/Not applicable	<a href="#">more</a>
V563 — Primary CDC Contacted Vehicle -CDC #2	9800000	—	—
V564 — Secondary CDC Case Vehicle - Event No	8	Not applicable	<a href="#">more</a>
V565 — Secondary CDC Case Vehicle - Impact Speed	998	Not Applicable	<a href="#">more</a>

V566 — Secondary CDC Case Vehicle - Estimated By	8	Not applicable (no vehicle/no impact)	<a href="#">more</a>
V567 — Secondary CDC Case Vehicle -crush	998	Not Applicable	<a href="#">more</a>
V568 — Secondary CDC Case Vehicle -clock #1	98	Not Applicable	<a href="#">more</a>
V569 — Secondary CDC Case Vehicle letter 1 #1	00	Missing Data/Not applicable	<a href="#">more</a>
V570 — Secondary CDC Case Vehicle letter 2 #1	00	Missing Data/Not applicable	<a href="#">more</a>
V571 — Secondary CDC Case Vehicle letter 3 #1	00	Missing Data/Not applicable	<a href="#">more</a>
V572 — Secondary CDC Case Vehicle letter 4 #1	00	Missing Data/Not applicable	<a href="#">more</a>
V573 — Secondary CDC Case Vehicle Extent #1	00	Missing Data/Not applicable	<a href="#">more</a>
V574 — Secondary CDC Case Vehicle -CDC #1	9800000	—	—
V576 — Secondary CDC Case Vehicle letter 1 #2	00	Missing Data/Not applicable	<a href="#">more</a>
V577 — Secondary CDC Case Vehicle letter 2 #2	00	Missing Data/Not applicable	<a href="#">more</a>
V578 — Secondary CDC Case Vehicle letter 3 #2	00	Missing Data/Not applicable	<a href="#">more</a>
V579 — Secondary CDC Case Vehicle letter 4 #2	00	Missing Data/Not applicable	<a href="#">more</a>
V580 — Secondary CDC Case Vehicle Extent #2	00	Missing Data/Not applicable	<a href="#">more</a>
V581 — Secondary CDC Case Vehicle -CDC #2	9800000	—	—
V582 — Secondary CDC Contacted Vehicle - Impact Speed	998	Not Applicable	<a href="#">more</a>
	8	Not applicable	

V583 — Secondary CDC Contacted Vehicle - Estimated By		(no vehicle/no impact)	<a href="#">more</a>
V584 — Secondary CDC Contacted Vehicle -crush	998	Not Applicable	<a href="#">more</a>
V585 — Secondary CDC Contacted Vehicle -clock #1	98	Not Applicable	<a href="#">more</a>
V586 — Secondary CDC Contacted Vehicle letter 1 #1	00	Missing Data/Not applicable	<a href="#">more</a>
V587 — Secondary CDC Contacted Vehicle letter 2 #1	00	Missing Data/Not applicable	<a href="#">more</a>
V588 — Secondary CDC Contacted Vehicle letter 3 #1	00	Missing Data/Not applicable	<a href="#">more</a>
V589 — Secondary CDC Contacted Vehicle letter 4 #1	00	Missing Data/Not applicable	<a href="#">more</a>
V590 — Secondary CDC Contacted Vehicle Extent #1	00	Missing Data/Not applicable	<a href="#">more</a>
V591 — Secondary CDC Contacted Vehicle -CDC #1	9800000	—	—
V593 — Secondary CDC Contacted Vehicle letter 1 #2	00	Missing Data/Not applicable	<a href="#">more</a>
V594 — Secondary CDC Contacted Vehicle letter 2 #2	00	Missing Data/Not applicable	<a href="#">more</a>
V595 — Secondary CDC Contacted Vehicle letter 3 #2	00	Missing Data/Not applicable	<a href="#">more</a>
V596 — Secondary CDC Contacted Vehicle letter 4 #2	00	Missing Data/Not applicable	<a href="#">more</a>
V597 — Secondary CDC Contacted Vehicle Extent #2	00	Missing Data/Not applicable	<a href="#">more</a>
V598 — Secondary CDC Contacted Vehicle -CDC #2	9800000	—	—

## Crash Severity

[Back to Top](#)

--	--	--	--



<b>Variable Number and Name</b>	<b>Code Value</b>	<b>Code Description</b>	<b>Other Options</b>
V601 — Case Vehicle Primary Impact Number	1	—	—
V602 — Primary Impact Total Delta-V	034 kph	—	—
V603 — Primary Case Vehicle Reconstructed Longitudinal Delta-V	-033 kph	—	—
V604 — Primary Case Vehicle Reconstructed Lateral Delta-V	0006 kph	—	—
V605 — Primary Case Vehicle Reconstructed Crush Energy	0083 kJ	—	—
V606 — Primary Impact Case Vehicle - reconstruction	22	Reconstructed, moderate confidence level	<a href="#">more</a>
V607 — Primary Case Vehicle Reconstruction Mode	2	CDC & detailed damage	<a href="#">more</a>
V608 — Primary Contacted Vehicle Reconstructed Total Delta-V	032 kph	—	—
V609 — Primary	-031 kph		

Contacted Vehicle Reconstructed Longitudinal Delta-V		—	—
V610 — Primary Contacted Vehicle Reconstructed Lateral Delta-V	-006 kph	—	—
V611 — Primary Contacted Vehicle Reconstructed Crush Energy	0078 kJ	—	—
V612 — Case Vehicle Secondary Impact Number	8	—	—
V613 — Secondary Case Vehicle Reconstructed Total Delta-V	888	N/A	<a href="#">more</a>
V614 — Secondary Case Vehicle Reconstructed Longitudinal Delta-V	8888	—	—
V615 — Secondary Case Vehicle Reconstructed Lateral Delta-V	8888	—	—
V616 — Secondary Case Vehicle Reconstructed Crush Energy	8888	—	—
V617 — Secondary Case Vehicle	88	—	—

Reconstruction Note			
V618 — Secondary Case Vehicle Reconstruction Mode	8	Not applicable	<a href="#">more</a>
V619 — Secondary Contacted Vehicle Reconstructed Total Delta-V	888	N/A	<a href="#">more</a>
V620 — Secondary Contacted Vehicle Reconstructed Longitudinal Delta-V	8888	—	—
V621 — Secondary Contacted Vehicle Reconstructed Lateral Delta-V	8888	—	—
V622 — Secondary Contacted Vehicle Reconstructed Crush Energy	8888	—	—
V623 — Case Vehicle Primary Impact Number	1	—	—
V624 — Primary Case Vehicle Reconstructed Total EBS	031 kph	—	—
V625 — Primary Case Vehicle Reconstructed Longitudinal	-031 kph	—	—

EBS			
V626 — Primary Case Vehicle Reconstructed Lateral EBS	0005 kph	—	—
V627 — Primary Case Vehicle Reconstructed Crush Energy	0083 kJ	—	—
V628 — Primary Case Vehicle Reconstruction Note	22	Reconstructed, moderate confidence level	<a href="#">more</a>
V629 — Primary Case Vehicle Reconstruction Mode	2	CDC & detailed damage	<a href="#">more</a>
V630 — Primary Contacted Vehicle Reconstruction Total EBS	035 kph	—	—
V631 — Primary Contacted Vehicle Reconstruction Longitudinal EBS	-034 kph	—	—
V632 — Primary Contacted Vehicle Reconstruction Lateral EBS	-006 kph	—	—
V633 — Primary Contacted Vehicle Reconstruction Crush Energy	0078 kJ	—	—
V634 — Case	8		

Vehicle Secondary Impact Number		Not applicable	<a href="#">more</a>
V635 — Secondary Case Vehicle Reconstruction Total EBS	888	N/A	<a href="#">more</a>
V636 — Secondary Case Vehicle Reconstruction Longitudinal EBS	8888	—	—
V637 — Secondary Case Vehicle Reconstruction Lateral EBS	8888	—	—
V638 — Secondary Case Vehicle Reconstruction Crush Energy	8888	—	—
V639 — Secondary Case Vehicle Reconstruction Note	88	—	—
V640 — Secondary Case Vehicle Reconstruction Mode	8	Not applicable	<a href="#">more</a>
V641 — Secondary Contacted Vehicle Reconstruction Total EBS	888	N/A	<a href="#">more</a>
V642 — Secondary Contacted Vehicle Reconstruction Longitudinal EBS	8888	—	—

V643 — Secondary Contacted Vehicle Reconstruction Lateral EBS	8888	—	—
V644 — Secondary Contacted Vehicle Reconstruction Crush Energy	8888	—	—
V645 — Case Vehicle Reconstructed Impact Number	1	—	—
V646 — Case Vehicle Impact 1 Plane	1	Bumper	<a href="#">more</a>
V647 — Case Vehicle Impact 1 Direct Damage Length [DDL]	039 cm	—	—
V648 — Case Vehicle Impact 1 Max Crush	063 cm	—	—
V649 — Case Vehicle Impact 1 Field-L	113 cm	—	—
V650 — Case Vehicle Impact 1 C1	000 cm	No Crush	<a href="#">more</a>
V651 — Case Vehicle Impact 1 C2	015 cm	—	—
V652 — Case Vehicle Impact 1 C3	027 cm	—	—
V653 — Case Vehicle Impact 1 C4	036 cm	—	—
V654 — Case	045 cm		

Vehicle Impact 1 C5		—	—
V655 — Case Vehicle Impact 1 C6	063 cm	—	—
V656 — Case Vehicle Impact 1 +/- D	0051 cm	—	—
V657 — Case Vehicle Reconstructed Impact Number	2	—	—
V658 — Case Vehicle Impact 2 Plane	8	Not applicable	<a href="#">more</a>
V659 — Case Vehicle Impact 2 Direct Damage Length [DDL]	998	Not applicable	<a href="#">more</a>
V660 — Case Vehicle Impact 2 Max Crush	998	Not applicable	<a href="#">more</a>
V661 — Case Vehicle Impact 2 Field-L	998	Not applicable	<a href="#">more</a>
V662 — Case Vehicle Impact 2 C1	998	Not applicable	<a href="#">more</a>
V663 — Case Vehicle Impact 2 C2	998	Not applicable	<a href="#">more</a>
V664 — Case Vehicle Impact 2 C3	998	Not applicable	<a href="#">more</a>
V665 — Case Vehicle Impact 2 C4	998	Not applicable	<a href="#">more</a>
V666 — Case Vehicle Impact 2 C5	998	Not applicable	<a href="#">more</a>
V667 — Case	998		



Vehicle Impact 2 C6		Not applicable	<a href="#">more</a>
V668 — Case Vehicle Impact 2 +/- D	9998	—	—
V669 — Other Vehicle Reconstructed Impact Number	1	—	—
V670 — Other Vehicle Impact 1 Plane	1	Bumper	<a href="#">more</a>
V671 — Other Vehicle Impact 1 Direct Damage Length [DDL]	046 cm	—	—
V672 — Other Vehicle Impact 1 Max Crush	050 cm	—	—
V673 — Other Vehicle Impact 1 Field-L	125 cm	—	—
V674 — Other Vehicle Impact 1 C1	003 cm	—	—
V675 — Other Vehicle Impact 1 C2	013 cm	—	—
V676 — Other Vehicle Impact 1 C3	027 cm	—	—
V677 — Other Vehicle Impact 1 C4	036 cm	—	—
V678 — Other Vehicle Impact 1 C5	040 cm	—	—
V679 — Other Vehicle Impact 1 C6	050 cm	—	—
V680 — Other	0051 cm		

Vehicle Impact 1 +/- D		—	—
V681 — Other Vehicle Reconstructed Impact Number	2	—	—
V682 — Other Vehicle Impact 2 Plane	8	Not applicable	<a href="#">more</a>
V683 — Other Vehicle Impact 2 Direct Damage Length [DDL]	998	Not applicable	<a href="#">more</a>
V684 — Other Vehicle Impact 2 Max Crush	998	Not applicable	<a href="#">more</a>
V685 — Other Vehicle Impact 2 Field-L	998	Not applicable	<a href="#">more</a>
V686 — Other Vehicle Impact 2 C1	998	Not applicable	<a href="#">more</a>
V687 — Other Vehicle Impact 2 C2	998	Not applicable	<a href="#">more</a>
V688 — Other Vehicle Impact 2 C3	998	Not applicable	<a href="#">more</a>
V689 — Other Vehicle Impact 2 C4	998	Not applicable	<a href="#">more</a>
V690 — Other Vehicle Impact 2 C5	998	Not applicable	<a href="#">more</a>
V691 — Other Vehicle Impact 2 C6	998	Not applicable	<a href="#">more</a>
V692 — Other Vehicle Impact 2 +/- D	9998	—	—

## Case Vehicle Tires & Rims

[Back to Top](#)

Variable Number and Name	Code Value	Code Description	Other Options
V701 — Left Front Wheel Damaged	0	No	<a href="#">more</a>
V702 — Right Front Wheel Damaged	1	Yes	<a href="#">more</a>
V703 — Right Rear Wheel Damaged	0	No	<a href="#">more</a>
V704 — Left Rear Wheel Damaged	0	No	<a href="#">more</a>
V705 — Left Front Tire Tread Type	4	All Weather	<a href="#">more</a>
V706 — Right Front Tire Tread Type	4	All Weather	<a href="#">more</a>
V707 — Right Rear Tire Tread Type	4	All Weather	<a href="#">more</a>
V708 — Left Rear Tire Tread Type	4	All Weather	<a href="#">more</a>
V709 — Left Front Carcass Construction	3	Radial	<a href="#">more</a>
V710 — Right Front Carcass Construction	3	Radial	<a href="#">more</a>
V711 — Right Rear Carcass Construction	3	Radial	<a href="#">more</a>
V712 — Left Rear Carcass Construction	3	Radial	<a href="#">more</a>
V717 — Left Front Tire Size	24545ZR17	—	—
V718 — Right Front Tire Size	24545ZR17	—	—
V719 — Right Rear Tire Size	24545ZR17	—	—
V720 — Left Rear Tire Size	24545ZR17	—	—

## Case Vehicle Fuel, Tank, Fire

[Back to Top](#)

Variable Number and Name	Code Value	Code Description	Other Options
V801 — Propulsive Fuel Type	1	Gasoline	<a href="#">more</a>
V802 — Main Tank Location	122	Within frame/centered laterally - within vertically	<a href="#">more</a>
V803 — Main Filler Cap Location	133	—	—
V804 — Main Tank Material	3	Plastic	<a href="#">more</a>
V805 — Aux Tank Type	8	Not applicable (not equipped)	<a href="#">more</a>



V806 — Aux Tank Location	888	Not applicable (not equipped)	<a href="#">more</a>
V807 — Aux Filler Cap Location	888	Not applicable (not equipped)	<a href="#">more</a>
V808 — Aux Tank Material	8	Not applicable	<a href="#">more</a>
V901 — Fuel Leakage From Crash	0	No	<a href="#">more</a>
V1001 — Fire In Or On Case Vehicle	0	No	<a href="#">more</a>

## Case Vehicle Exterior

[Back to Top](#)

Variable Number and Name	Code Value	Code Description	Other Options
V1101 — Hood Latch Released	0	No	<a href="#">more</a>
V1102 — Hood Latch Damaged	1	Yes	<a href="#">more</a>
V1103 — Hood Latch Jammed	1	Yes	<a href="#">more</a>
V1104 — Left Hood Hinge Damaged	9	Unknown	<a href="#">more</a>
V1105 — Left Hood Hinge Separated	0	No	<a href="#">more</a>
V1106 — Right Hood Hinge Damaged	1	Yes	<a href="#">more</a>
V1107 — Right Hood Hinge Separated	0	No	<a href="#">more</a>
V1108 — Hood Remained On Vehicle	1	Yes	<a href="#">more</a>
V1109 — Rear Hood Edge Elevated	1	Yes	<a href="#">more</a>
V1110 — Edge Contacted Windshield	0	No	<a href="#">more</a>
V1111 — Edge Penetrated Windshield	8	Not applicable	<a href="#">more</a>
V1112 — Hood Latch Location	1	Front of Vehicle	<a href="#">more</a>
V1113 — Eng/Transmissn Mount Separation	0	No	<a href="#">more</a>
V1114 — Sterng Column Flex Coupling	9	Unknown if equipped	<a href="#">more</a>
V1115 — Sterng Column Coupling Damaged	9	Unknown	<a href="#">more</a>
V1116 — Sterng Column Coupling Separated	9	Unknown	<a href="#">more</a>
V1117 — Eng Comp Telescopng Unit	88	Not collected	<a href="#">more</a>
V1118 — Comp Orig/Telescopd Diff	888	Not collected	<a href="#">more</a>
V1119 — Left Side Body Mount Separation	8	Not applicable (unitized)	<a href="#">more</a>
V1120 — Upper Left A-pillar Separation	0	No	<a href="#">more</a>
V1121 — Lower Left A-pillar Separation	0	No	<a href="#">more</a>

V1122 — Upper Left B-pillar Separation	0	No	<a href="#">more</a>
V1123 — Lower Left B-pillar Separation	0	No	<a href="#">more</a>
V1124 — Upper Left C-pillar Separation	0	No	<a href="#">more</a>
V1125 — Lower Left C-pillar Separation	8	Not applicable (not equipped)	<a href="#">more</a>
V1126 — Upper Left D-pillar Separation	8	Not applicable (not equipped)	<a href="#">more</a>
V1127 — Lower Left D-pillar Separation	8	Not applicable (not equipped)	<a href="#">more</a>
V1128 — Left Front Door Opening Cause	0	Door did not open	<a href="#">more</a>
V1129 — Left Rear Door Opening Cause	8	Not applicable (no left rear door)	<a href="#">more</a>
V1130 — Left Front Door Jammed Closed	0	No	<a href="#">more</a>
V1131 — Left Rear Door Jammed Closed	8	Not applicable (no left rear door)	<a href="#">more</a>
V1132 — Rear Door Type	0	No door (includes pickups)	<a href="#">more</a>
V1133 — Rear Door Opening Cause	8	Not applicable (no rear door)	<a href="#">more</a>
V1134 — Rear Door Jammed Closed	8	Not applicable (no rear door)	<a href="#">more</a>
V1135 — Luggage Partition Damagd	0	No	<a href="#">more</a>
V1136 — Spare Tire Status	8	Not collected	<a href="#">more</a>
V1137 — Trailer Hitch Type	0	No hitch	<a href="#">more</a>
V1138 — Trailer Type	0	No trailer	<a href="#">more</a>
V1139 — Right Side Body Mount Separation	8	Not applicable (unitized)	<a href="#">more</a>
V1140 — Upper Right A-pillar Separation	4	No separation, but damaged	<a href="#">more</a>
V1141 — Lower Right A-pillar Separation	4	No separation, but damaged	<a href="#">more</a>
V1142 — Upper Right B-pillar Separation	0	No	<a href="#">more</a>
V1143 — Lower Right B-pillar Separation	4	No separation, but damaged	<a href="#">more</a>
V1144 — Upper Right C-pillar Separation	0	No	<a href="#">more</a>
V1145 — Lower Right C-pillar Separation	8	Not applicable (not equipped)	<a href="#">more</a>
V1146 — Upper Right D-pillar	8	Not applicable (not equipped)	<a href="#">more</a>

Separation			
V1147 — Lower Right D-pillar Separation	8	Not applicable (not equipped)	<a href="#">more</a>
V1148 — Right Front Door Opening Cause	00	Door did not open	<a href="#">more</a>
V1149 — Right Rear Door Opening Cause	98	Not applicable (no right rear door)	<a href="#">more</a>
V1150 — Right Front Door Jammed Closed	1	Yes	<a href="#">more</a>
V1151 — Right Rear Door Jammed Closed	8	Not applicable (no right rear door)	<a href="#">more</a>
V1152 — Van Rear Door Type	8	Not applicable (not a van)	<a href="#">more</a>
V1153 — Windshield Cracked		Yes	<a href="#">more</a>
V1154 — Windshield Broken	1	Yes	<a href="#">more</a>
V1155 — Windshield Cracked or Broken by Occupant	0	No	<a href="#">more</a>
V1156 — Bond Separation Extent	0	None	<a href="#">more</a>
V1157 — Windshield Code		—	—
V1158 — Did Sun/T Roof Open	8	Not Applicable	<a href="#">more</a>

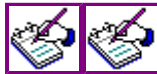
**Case Vehicle  
Steering  
Column/Rim**

[Back to Top](#)

Variable Number and Name	Code Value	Code Description	Other Options
V1201 — Steering Wheel Rim Damage	0	None	<a href="#">more</a>
V1202 — Number of Steering Wheel Spokes	4	4 spokes	<a href="#">more</a>
V1203 — Steering Wheel Spoke Damage	0	None	<a href="#">more</a>
V1204 — Column Tilt Feature	4	Lower	<a href="#">more</a>
V1205 — Column Swing-away	0		

Feature		Not equipped	<a href="#">more</a>
V1206 — Column Telescoping Feature	0	Not equipped	<a href="#">more</a>
V1207 — Wheel Energy Absorb Device	8	Not collected	<a href="#">more</a>
V1208 — Wheel Ea Orig/Damaged Diff	888	Not collected	<a href="#">more</a>
V1209 — Column Energy Absorb Device	88	Not collected	<a href="#">more</a>
V1210 — Column Ea Orig/Comprss Diff	888	Not collected	<a href="#">more</a>
V1211 — Shear Capsule Separation	888	Not collected	<a href="#">more</a>
V1212 — Column Vertical Rotation	0	No apparent rotation	<a href="#">more</a>
V1213 — Column Lateral Rotation	0	No apparent rotation	<a href="#">more</a>
V1214 — Steering Wheel Hub Damage	0	None	<a href="#">more</a>

## Case Vehicle Intrusion



Click for intrusion figures

[Back to Top](#)

Variable Number and Name	Code Value	Code Description	Other Options
V1301 — Occupant Compartment Intrusion	1	Yes	<a href="#">more</a>
V1302 — Was Intrusion Catastrophic	0	No	<a href="#">more</a>
V1303 — Intrusion Number 01	01	Intrusion #1	<a href="#">more</a>
V1304 — Intrusion 01 Occupant Space Number	11	First row, Left seat	<a href="#">more</a>
V1305 — Intrusion 01 Intruding Object	28	Transmission tunnel (hump)	<a href="#">more</a>
V1306 — Intrusion 01 Assoc Event Number	1	Event #1	<a href="#">more</a>
V1307 — Intrusion 01 Max Intrusion X-axis	00 cm	0 cm or No Intrusion	<a href="#">more</a>
V1308 — Intrusion 01 Max Intrusion Y-axis	13 cm	—	—
V1309 — Intrusion 01 Max Intrusion Z-axis	00 cm	0 cm or No Intrusion	<a href="#">more</a>
V1310 — Intrusion 01 Occupant Number	00	No contact or no intrusion	<a href="#">more</a>
V1311 — Intrusion 01 Injury Number	00	No injury or no intrusion	<a href="#">more</a>
V1312 — Intrusion 01 Occupant	00		



Number		No contact or no intrusion	<a href="#">more</a>
V1313 — Intrusion 01 Injury Number	00	No injury or no intrusion	<a href="#">more</a>
V1314 — Intrusion Number 02	02	Intrusion #2	<a href="#">more</a>
V1315 — Intrusion 02 Occupant Space Number	11	First row, Left seat	<a href="#">more</a>
V1316 — Intrusion 02 Intruding Object	01	Instrument panel	<a href="#">more</a>
V1317 — Intrusion 02 Assoc Event Number	1	Event #1	<a href="#">more</a>
V1318 — Intrusion 02 Max Intrusion X-axis	08 cm	—	—
V1319 — Intrusion 02 Max Intrusion Y-axis	00 cm	0 cm or No Intrusion	<a href="#">more</a>
V1320 — Intrusion 02 Max Intrusion Z-axis	00 cm	0 cm or No Intrusion	<a href="#">more</a>
V1321 — Intrusion 02 Occupant Number	01	Occupant number 1, contact	<a href="#">more</a>
V1322 — Intrusion 02 Injury Number	11	Injury #11	<a href="#">more</a>
V1323 — Intrusion 02 Occupant Number	00	No contact or no intrusion	<a href="#">more</a>
V1324 — Intrusion 02 Injury Number	00	No injury or no intrusion	<a href="#">more</a>
V1325 — Intrusion Number 03	03	Intrusion #3	<a href="#">more</a>
V1326 — Intrusion 03 Occupant Space Number	12	First row, Center seat	<a href="#">more</a>
V1327 — Intrusion 03 Intruding Object	24	Console	<a href="#">more</a>
V1328 — Intrusion 03 Assoc Event Number	1	Event #1	<a href="#">more</a>
V1329 — Intrusion 03 Max Intrusion X-axis	07 cm	—	—
V1330 — Intrusion 03 Max Intrusion Y-axis	00 cm	0 cm or No Intrusion	<a href="#">more</a>
V1331 — Intrusion 03 Max Intrusion Z-axis	00 cm	0 cm or No Intrusion	<a href="#">more</a>
V1332 — Intrusion 03 Occupant Number	00	No contact or no intrusion	<a href="#">more</a>
V1333 — Intrusion 03 Injury Number	00	No injury or no intrusion	<a href="#">more</a>
V1334 — Intrusion 03 Occupant Number	00	No contact or no intrusion	<a href="#">more</a>
V1335 — Intrusion 03 Injury Number	00	No injury or no intrusion	<a href="#">more</a>
V1336 — Intrusion Number 04	04	Intrusion #4	<a href="#">more</a>
V1337 — Intrusion 04 Occupant	13		

Space Number		First row, Right seat	<a href="#">more</a>
V1338 — Intrusion 04 Intruding Object	08	A-pillar	<a href="#">more</a>
V1339 — Intrusion 04 Assoc Event Number	1	Event #1	<a href="#">more</a>
V1340 — Intrusion 04 Max Intrusion X-axis	41 cm	—	—
V1341 — Intrusion 04 Max Intrusion Y-axis	10 cm	—	—
V1342 — Intrusion 04 Max Intrusion Z-axis	00 cm	0 cm or No Intrusion	<a href="#">more</a>
V1343 — Intrusion 04 Occupant Number	00	No contact or no intrusion	<a href="#">more</a>
V1344 — Intrusion 04 Injury Number	00	No injury or no intrusion	<a href="#">more</a>
V1345 — Intrusion 04 Occupant Number	00	No contact or no intrusion	<a href="#">more</a>
V1346 — Intrusion 04 Injury Number	00	No injury or no intrusion	<a href="#">more</a>
V1347 — Intrusion Number 05	05	Intrusion #5	<a href="#">more</a>
V1348 — Intrusion 05 Occupant Space Number	13	First row, Right seat	<a href="#">more</a>
V1349 — Intrusion 05 Intruding Object	03	Toe pan	<a href="#">more</a>
V1350 — Intrusion 05 Assoc Event Number	1	Event #1	<a href="#">more</a>
V1351 — Intrusion 05 Max Intrusion X-axis	31 cm	—	—
V1352 — Intrusion 05 Max Intrusion Y-axis	00 cm	0 cm or No Intrusion	<a href="#">more</a>
V1353 — Intrusion 05 Max Intrusion Z-axis	00 cm	0 cm or No Intrusion	<a href="#">more</a>
V1354 — Intrusion 05 Occupant Number	00	No contact or no intrusion	<a href="#">more</a>
V1355 — Intrusion 05 Injury Number	00	No injury or no intrusion	<a href="#">more</a>
V1356 — Intrusion 05 Occupant Number	00	No contact or no intrusion	<a href="#">more</a>
V1357 — Intrusion 05 Injury Number	00	No injury or no intrusion	<a href="#">more</a>
V1358 — Intrusion Number 06	06	Intrusion #6	<a href="#">more</a>
V1359 — Intrusion 06 Occupant Space Number	13	First row, Right seat	<a href="#">more</a>
V1360 — Intrusion 06 Intruding Object	01	Instrument panel	<a href="#">more</a>
V1361 — Intrusion 06 Assoc Event	1	Event #1	<a href="#">more</a>

Number			
V1362 — Intrusion 06 Max Intrusion X-axis	29 cm	—	—
V1363 — Intrusion 06 Max Intrusion Y-axis	00 cm	0 cm or No Intrusion	<a href="#">more</a>
V1364 — Intrusion 06 Max Intrusion Z-axis	00 cm	0 cm or No Intrusion	<a href="#">more</a>
V1365 — Intrusion 06 Occupant Number	00	No contact or no intrusion	<a href="#">more</a>
V1366 — Intrusion 06 Injury Number	00	No injury or no intrusion	<a href="#">more</a>
V1367 — Intrusion 06 Occupant Number	00	No contact or no intrusion	<a href="#">more</a>
V1368 — Intrusion 06 Injury Number	00	No injury or no intrusion	<a href="#">more</a>
V1369 — Intrusion Number 07	07	Intrusion #7	<a href="#">more</a>
V1370 — Intrusion 07 Occupant Space Number	13	First row, Right seat	<a href="#">more</a>
V1371 — Intrusion 07 Intruding Object	29	Side footwell panel (kickpanel)	<a href="#">more</a>
V1372 — Intrusion 07 Assoc Event Number	1	Event #1	<a href="#">more</a>
V1373 — Intrusion 07 Max Intrusion X-axis	00 cm	0 cm or No Intrusion	<a href="#">more</a>
V1374 — Intrusion 07 Max Intrusion Y-axis	10 cm	—	—
V1375 — Intrusion 07 Max Intrusion Z-axis	00 cm	0 cm or No Intrusion	<a href="#">more</a>
V1376 — Intrusion 07 Occupant Number	00	No contact or no intrusion	<a href="#">more</a>
V1377 — Intrusion 07 Injury Number	00	No injury or no intrusion	<a href="#">more</a>
V1378 — Intrusion 07 Occupant Number	00	No contact or no intrusion	<a href="#">more</a>
V1379 — Intrusion 07 Injury Number	00	No injury or no intrusion	<a href="#">more</a>
V1380 — Intrusion Number 08	08	Intrusion #8	<a href="#">more</a>
V1381 — Intrusion 08 Occupant Space Number	13	First row, Right seat	<a href="#">more</a>
V1382 — Intrusion 08 Intruding Object	09	Door panel or side panel	<a href="#">more</a>
V1383 — Intrusion 08 Assoc Event Number	1	Event #1	<a href="#">more</a>
V1384 — Intrusion 08 Max Intrusion X-axis	00 cm	0 cm or No Intrusion	<a href="#">more</a>
V1385 — Intrusion 08 Max Intrusion	05 cm	—	—

Y-axis			
V1386 — Intrusion 08 Max Intrusion Z-axis	00 cm	0 cm or No Intrusion	<a href="#">more</a>
V1387 — Intrusion 08 Occupant Number	00	No contact or no intrusion	<a href="#">more</a>
V1388 — Intrusion 08 Injury Number	00	No injury or no intrusion	<a href="#">more</a>
V1389 — Intrusion 08 Occupant Number	00	No contact or no intrusion	<a href="#">more</a>
V1390 — Intrusion 08 Injury Number	00	No injury or no intrusion	<a href="#">more</a>
V1391 — Intrusion Number 09	09	Intrusion #9	<a href="#">more</a>
V1392 — Intrusion 09 Occupant Space Number	21	Second row, Left seat	<a href="#">more</a>
V1393 — Intrusion 09 Intruding Object	04	Floor pan	<a href="#">more</a>
V1394 — Intrusion 09 Assoc Event Number	1	Event #1	<a href="#">more</a>
V1395 — Intrusion 09 Max Intrusion X-axis	00 cm	0 cm or No Intrusion	<a href="#">more</a>
V1396 — Intrusion 09 Max Intrusion Y-axis	00 cm	0 cm or No Intrusion	<a href="#">more</a>
V1397 — Intrusion 09 Max Intrusion Z-axis	08 cm	—	—
V1398 — Intrusion 09 Occupant Number	00	No contact or no intrusion	<a href="#">more</a>
V1399 — Intrusion 09 Injury Number	00	No injury or no intrusion	<a href="#">more</a>
V1400 — Intrusion 09 Occupant Number	00	No contact or no intrusion	<a href="#">more</a>
V1401 — Intrusion 09 Injury Number	00	No injury or no intrusion	<a href="#">more</a>
V1402 — Intrusion Number 10	10	Intrusion #10	<a href="#">more</a>
V1403 — Intrusion 10 Occupant Space Number	23	Second row, Right seat	<a href="#">more</a>
V1404 — Intrusion 10 Intruding Object	04	Floor pan	<a href="#">more</a>
V1405 — Intrusion 10 Assoc Event Number	1	Event #1	<a href="#">more</a>
V1406 — Intrusion 10 Max Intrusion X-axis	00 cm	0 cm or No Intrusion	<a href="#">more</a>
V1407 — Intrusion 10 Max Intrusion Y-axis	00 cm	0 cm or No Intrusion	<a href="#">more</a>
V1408 — Intrusion 10 Max Intrusion Z-axis	08 cm	—	—
V1409 — Intrusion 10 Occupant	00	No contact or no intrusion	<a href="#">more</a>

Number			
V1410 — Intrusion 10 Injury Number	00	No injury or no intrusion	<a href="#">more</a>
V1411 — Intrusion 10 Occupant Number	00	No contact or no intrusion	<a href="#">more</a>
V1412 — Intrusion 10 Injury Number	00	No injury or no intrusion	<a href="#">more</a>
V1413 — Door Intrusion Number 01	08	—	—
V1414 — Door Intrusion Number 01 Cause	2	Induced impact	<a href="#">more</a>
V1415 — Door Intrusion Number 02	88	Not Applicable	<a href="#">more</a>
V1416 — Door Intrusion Number 02 Cause	8	Not applicable	<a href="#">more</a>
V1417 — Door Intrusion Number 03	88	Not Applicable	<a href="#">more</a>
V1418 — Door Intrusion Number 03 Cause	8	Not applicable	<a href="#">more</a>
V1419 — Door Intrusion 01 Component	08	Intrusion #8	<a href="#">more</a>
V1420 — Door Intrusion 01 Component Damaged 1	1	A-Pillar	<a href="#">more</a>
V1421 — Door Intrusion 01 Component Damaged 2	0	None	<a href="#">more</a>
V1422 — Door Intrusion 02 Component	88	Not Applicable	<a href="#">more</a>
V1423 — Door Intrusion 02 Component Damaged 1	8	Not Applicable	<a href="#">more</a>
V1424 — Door Intrusion 02 Component Damaged 2	8	Not Applicable	<a href="#">more</a>
V1425 — Door Intrusion 03 Component	88	Not Applicable	<a href="#">more</a>
V1426 — Door Intrusion 03 Component Damaged 1	8	Not Applicable	<a href="#">more</a>
V1427 — Door Intrusion 03 Component Damaged 2	8	Not Applicable	<a href="#">more</a>
V1428 — Door Intrusion 04 Component	88	Not Applicable	<a href="#">more</a>
V1429 — Door Intrusion 04 Component Damaged 1	8	Not Applicable	<a href="#">more</a>
V1430 — Door Intrusion 04 Component Damaged 2	8	Not Applicable	<a href="#">more</a>

**Case Vehicle  
Airbag(s)**



[Click for Driver airbag figure](#)



[Click for Passenger airbag figure](#)

[Back to Top](#)

<b>Variable Number and Name</b>	<b>Code Value</b>	<b>Code Description</b>	<b>Other Options</b>
V1501 — Driver Airbag Equipped	1	Yes	<a href="#">more</a>
V1502 — Driver Airbag Deployed	1	Yes	<a href="#">more</a>
V1503 — Driver Airbag Condition	0	No Damage	<a href="#">more</a>
V1504 — Passenger Airbag Equip	1	Yes	<a href="#">more</a>
V1505 — Passenger Airbag Deployed	1	Yes	<a href="#">more</a>
V1506 — Passenger Airbag Condition	0	No Damage	<a href="#">more</a>
V1507 — Steering Wheel Airbag Tether	1	Yes	<a href="#">more</a>
V1508 — Driver Airbag Marked By Contact	0	No	<a href="#">more</a>
V1509 — Passenger Airbag Tether	0	No	<a href="#">more</a>
V1510 — Passenger Airbag Marked By Contact	0	No	<a href="#">more</a>

## Case Vehicle Interior

[Back to Top](#)

<b>Variable Number and Name</b>	<b>Code Value</b>	<b>Code Description</b>	<b>Other Options</b>
V1601 — Left Front Door Damaged	0	No	<a href="#">more</a>
V1602 — Right Front Door Damaged	1	Yes	<a href="#">more</a>
V1603 — Left Front Hardware Damaged	0	No	<a href="#">more</a>
V1604 — Right Front Hardware Damaged	1	Yes	<a href="#">more</a>
V1605 — Left Front Armrest Damaged	0	No	<a href="#">more</a>
V1606 — Right Front Armrest Damaged	1	Yes	<a href="#">more</a>
V1607 — Left Front Glass Damaged	0	No	<a href="#">more</a>
V1608 — Right Front Glass Damaged	1	Yes	<a href="#">more</a>
V1609 — Left Rear Door Area Damaged	0	No	<a href="#">more</a>
V1610 — Right Rear Door Area Damaged	1	Yes	<a href="#">more</a>
V1611 — Left Rear Hardware	0		

Damaged		No	<a href="#">more</a>
V1612 — Right Rear Hardware Damaged	0	No	<a href="#">more</a>
V1613 — Left Rear Armrest Damaged	0	No	<a href="#">more</a>
V1614 — Right Rear Armrest Damaged	0	No	<a href="#">more</a>















PPHSTI  
9089







015  
85









1507  
X  
2616

2616  
WRAP  
Film





















Ab Film  
Gruind

L. STRONG

AC  
SUSPENSE











OPTI2ION WRAP  
2014-2015

Small white card with illegible text.



Self-Adhering  
309  
E.









**WARNING**  
Do not use this product in the presence of open flames, sparks, or other ignition sources. The product may ignite and cause fire or explosion. Use in a well-ventilated area. For more information, see the Safety Data Sheet (SDS) for this product.

Self-Adhesive  
ARAB-Film  
3M

Self-Adhesive  
ARAB-Film  
3M

Self-Adhesive  
ARAB-Film  
3M









**▲ WARNING**

SAFETY BELT SEATBELT MUST BE WORN  
WHEN THE VEHICLE IS IN MOTION. ALWAYS  
WEAR YOUR SEATBELT TO PROTECT YOURSELF.  
FOR MORE INFORMATION, SEE THE OWNER'S  
MANUAL OR VISIT [www.ford.com](http://www.ford.com).

















9089  
17205052























CEL  
DAST

1 2 3 4 5 6 7 8 9 10 11 12 13 14 15 16 17 18  
1 2 3 4 5 6 7  
MADE IN USA  
FPA APPROVED  
1714

OFF





































YAG  
PRO

CO

will be protected by a film





MRAB

















8/6  
172499  
172499

172499  
172499  
172499

172499  
172499







8/6  
Prog  
172499  
XKLP  
180541

5328  
ACC-303







0/6  
Progr  
172499  
XRP  
2003

2003  
WRX

2848









41  
GLIC  
172625  
XKY-P  
307425

5568

LINCOLN







2/16 Progr 173499

2007 10000

173499

173499











172625







Self-Adhering  
COLLISION WRAP FILM

5785292LL

Self-Adhering  
COLLISION WRAP FILM

Self-Adhering  
COLLISION WRAP FILM

Self-Adhering  
COLLISION WRAP FILM

Self-Adhering  
COLLISION WRAP FILM





Handwritten text on the hood of the car, including the number '1000' and other illegible markings.

5568





21  
G10  
172625  
XKY-P  
08/14/25

5568





















500











NO PARKING  
LEFT TURN ONLY



